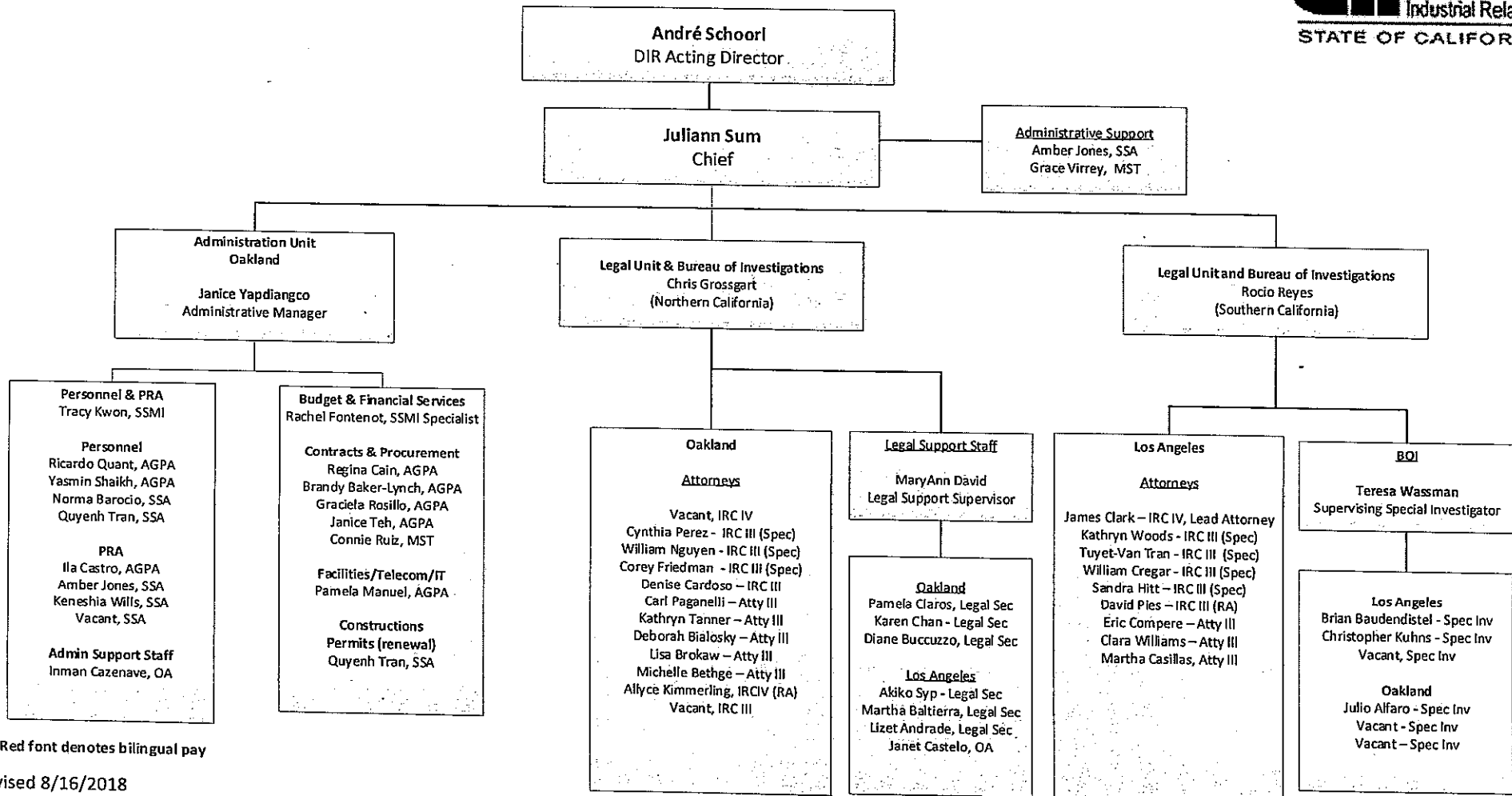


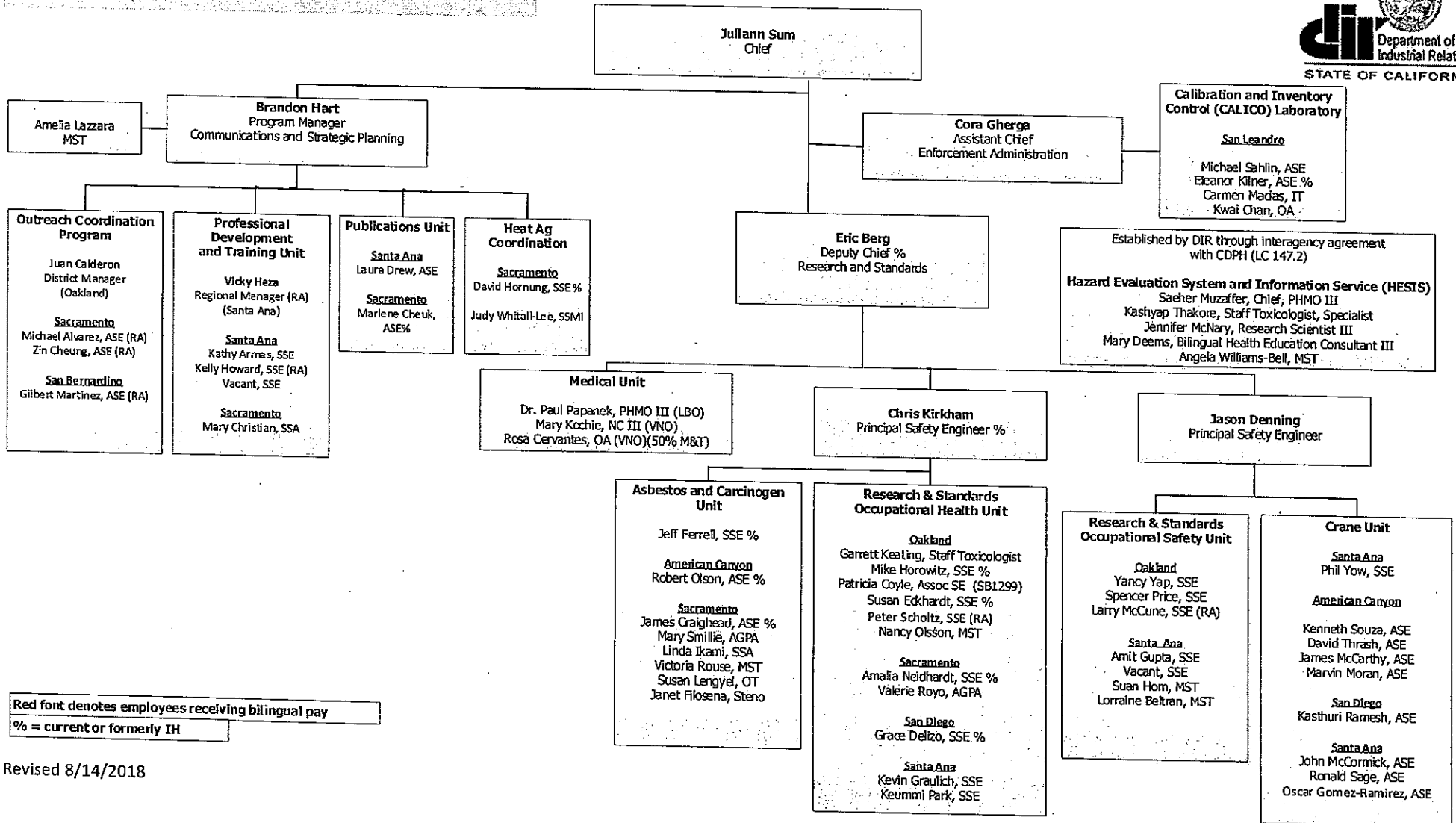
**DIVISION OF OCCUPATIONAL SAFETY AND HEALTH
ADMINISTRATION/LEGAL-BOI**



Red font denotes bilingual pay

Revised 8/16/2018

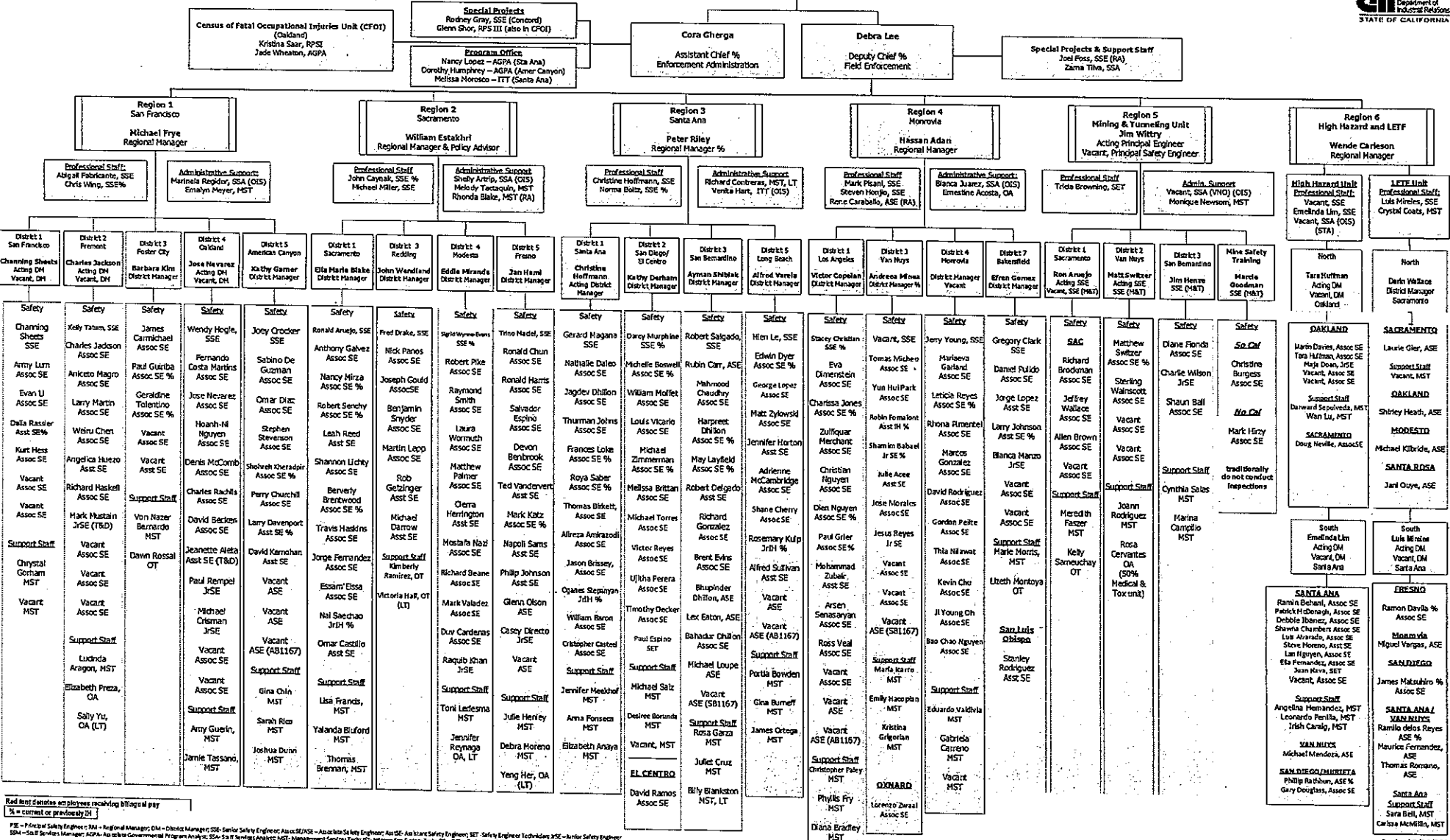
**Division of Occupational Safety and Health
Health, Safety, Medical, and Communications**



Red font denotes employees receiving bilingual pay
% = current or formerly IH

Revised 8/14/2018

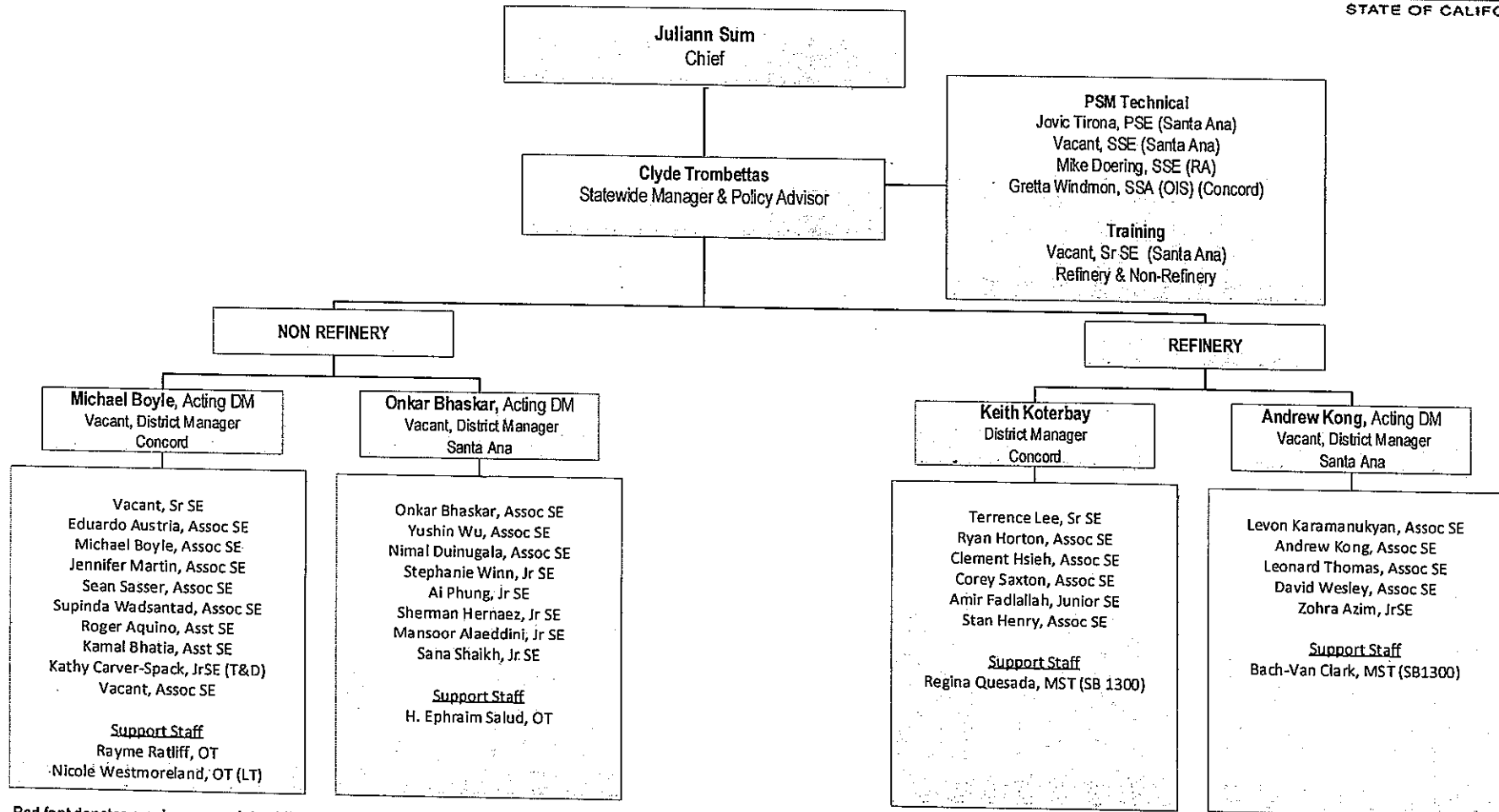
DIVISION OF OCCUPATIONAL SAFETY AND HEALTH ENFORCEMENT BRANCH



Red font denotes an employee receiving bilingual pay % = contract or previously DT

PE - Principal Safety Engineer; DM - District Manager; SSE - Senior Safety Engineer; ASE/SSA/SE - Associate Safety Engineer; ASSE - Assistant Safety Engineer; SET - Safety Engineer Technician; JSE - Junior Safety Engineer; SSA - Staff Supervisor; AGPA - Associate Government Program Analyst; SSA - Staff Supervisor; MST - Management Services Tech; OT - Office Technology; OA - Office Administrator; RA - Regional Administrator; TAO - Training and Development; TAD - Temporary Authorization Appointment

**DIVISION OF OCCUPATIONAL SAFETY AND HEALTH
ENFORCEMENT BRANCH - PROCESS SAFETY MANAGEMENT (PSM) UNIT**



Red font denotes employees receiving bilingual pay

**Division of Occupational Safety and Health
Consultation Services Branch**

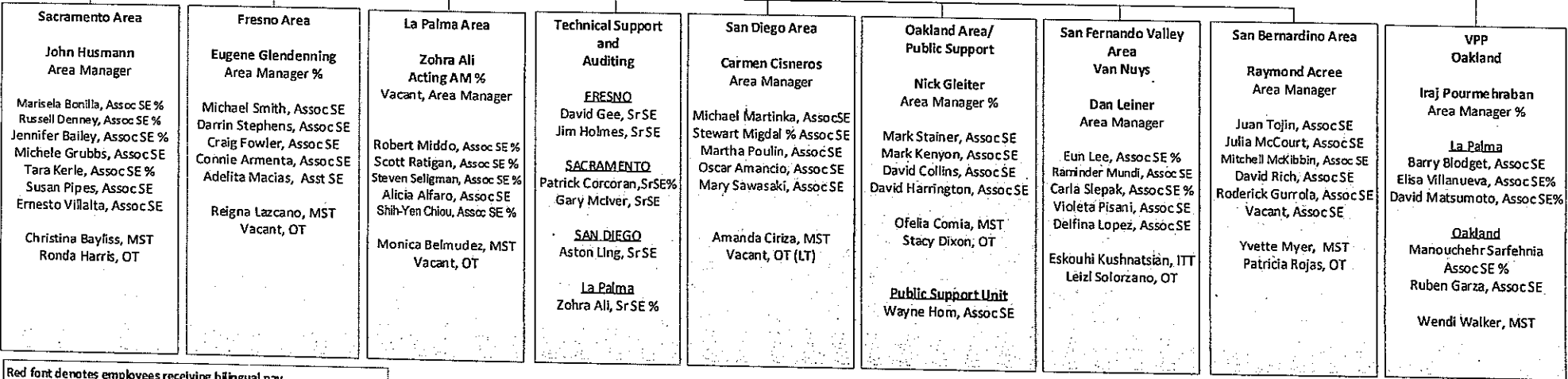


Juliann Sum
Chief

Eugene Glendenning
Acting Program Manager %
Consultation Services Program Office

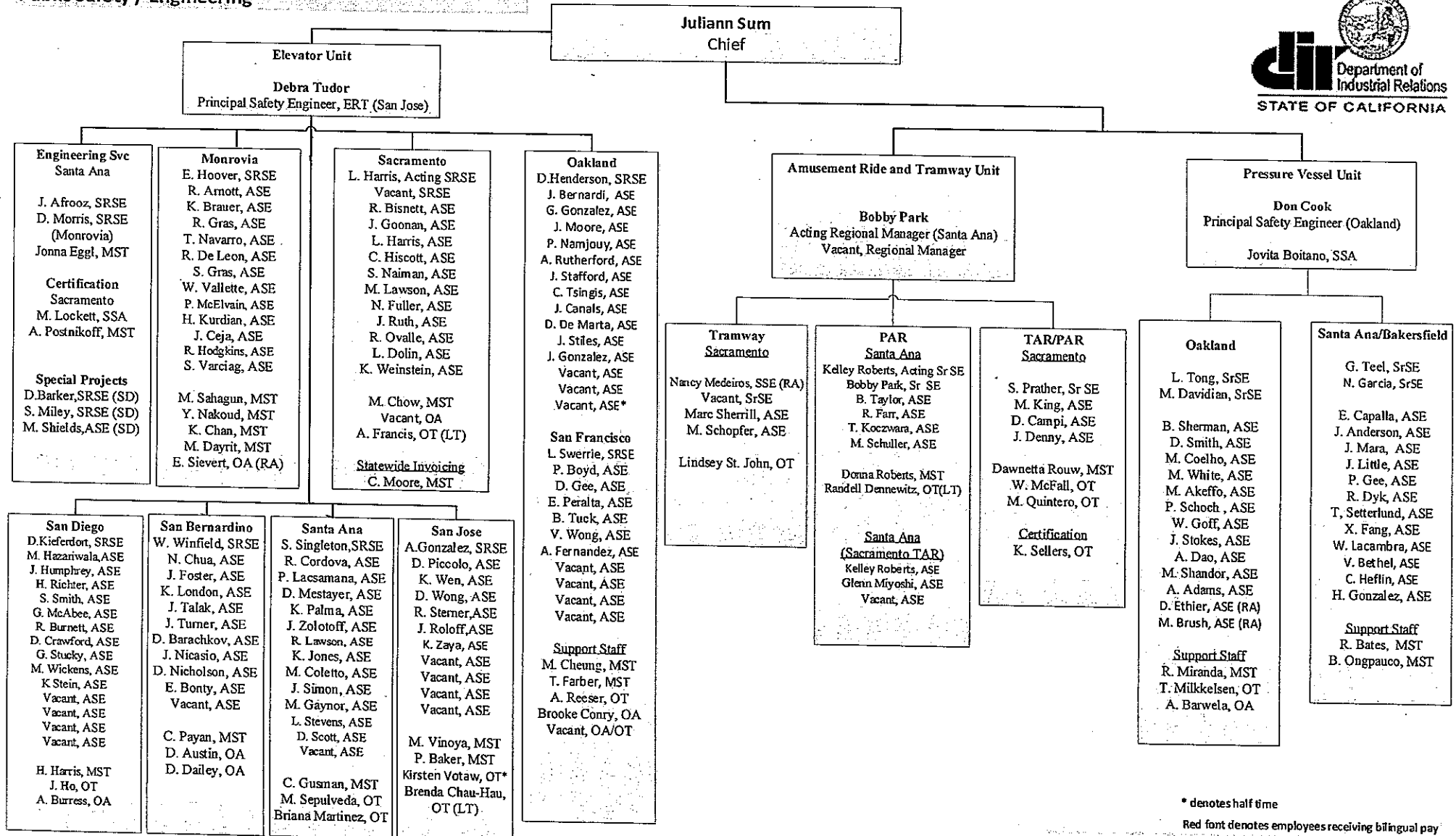
On-Site Consultation Regional Office
Jim Lopes
Regional Manager %
Fresno

Sherry Heinz, AGPA
Fresno



Red font denotes employees receiving bilingual pay
% = current or formerly IH

**Division of Occupational Safety and Health
Public Safety / Engineering**



* denotes half time

Red font denotes employees receiving bilingual pay

Revised 8/14/2018