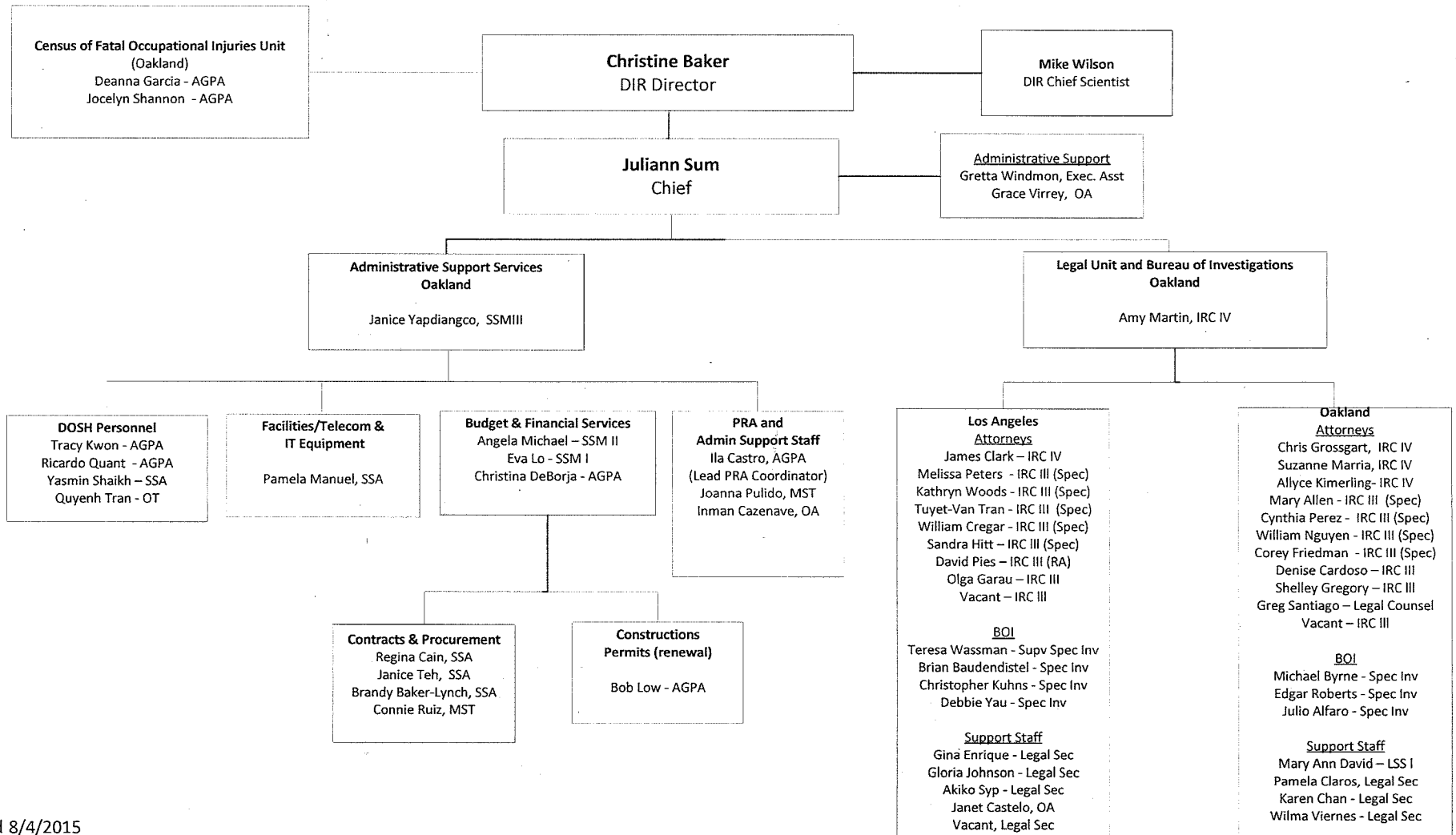
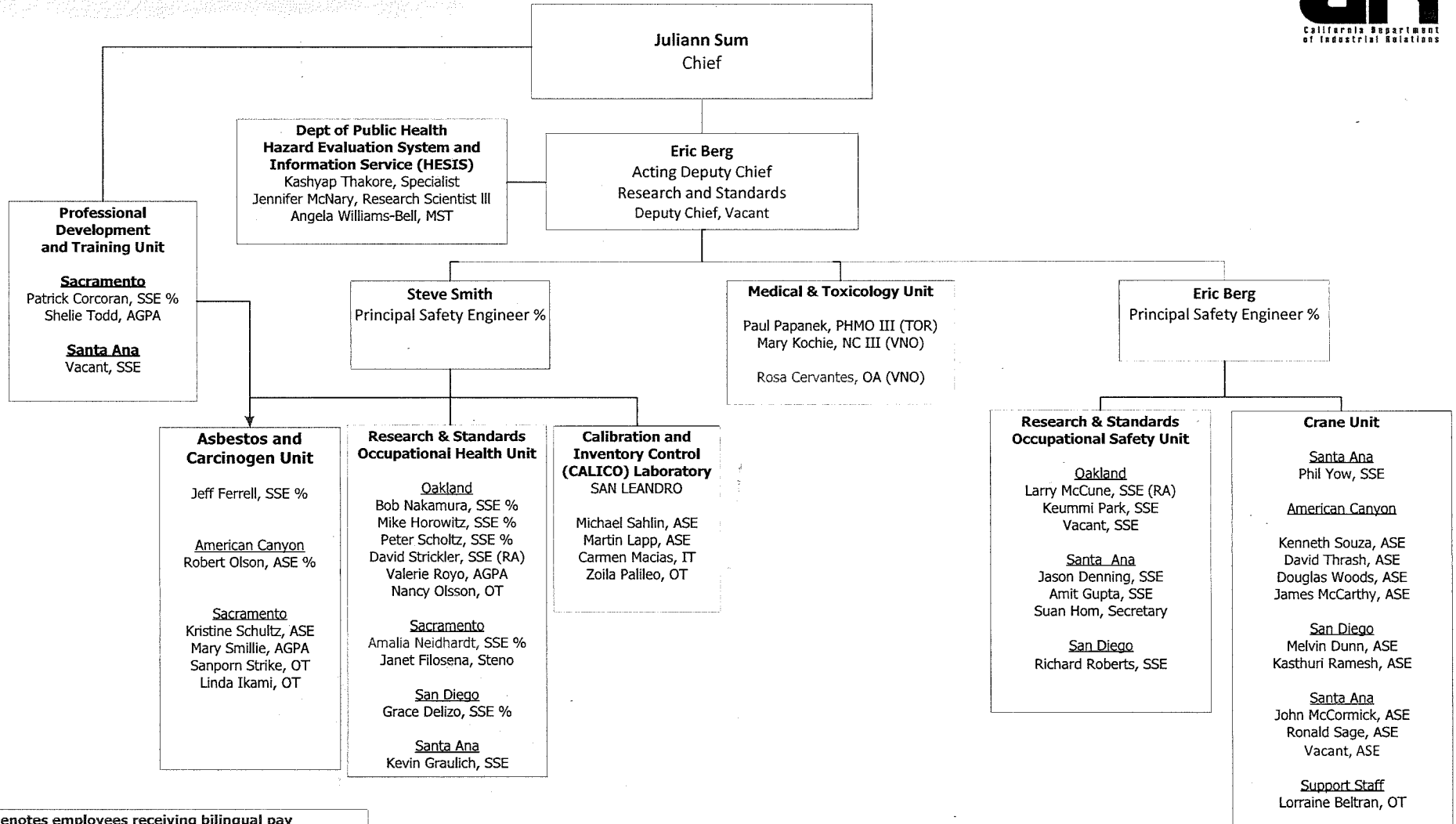


**DIVISION OF OCCUPATIONAL SAFETY AND HEALTH
ADMINISTRATION/LEGAL-BOI**



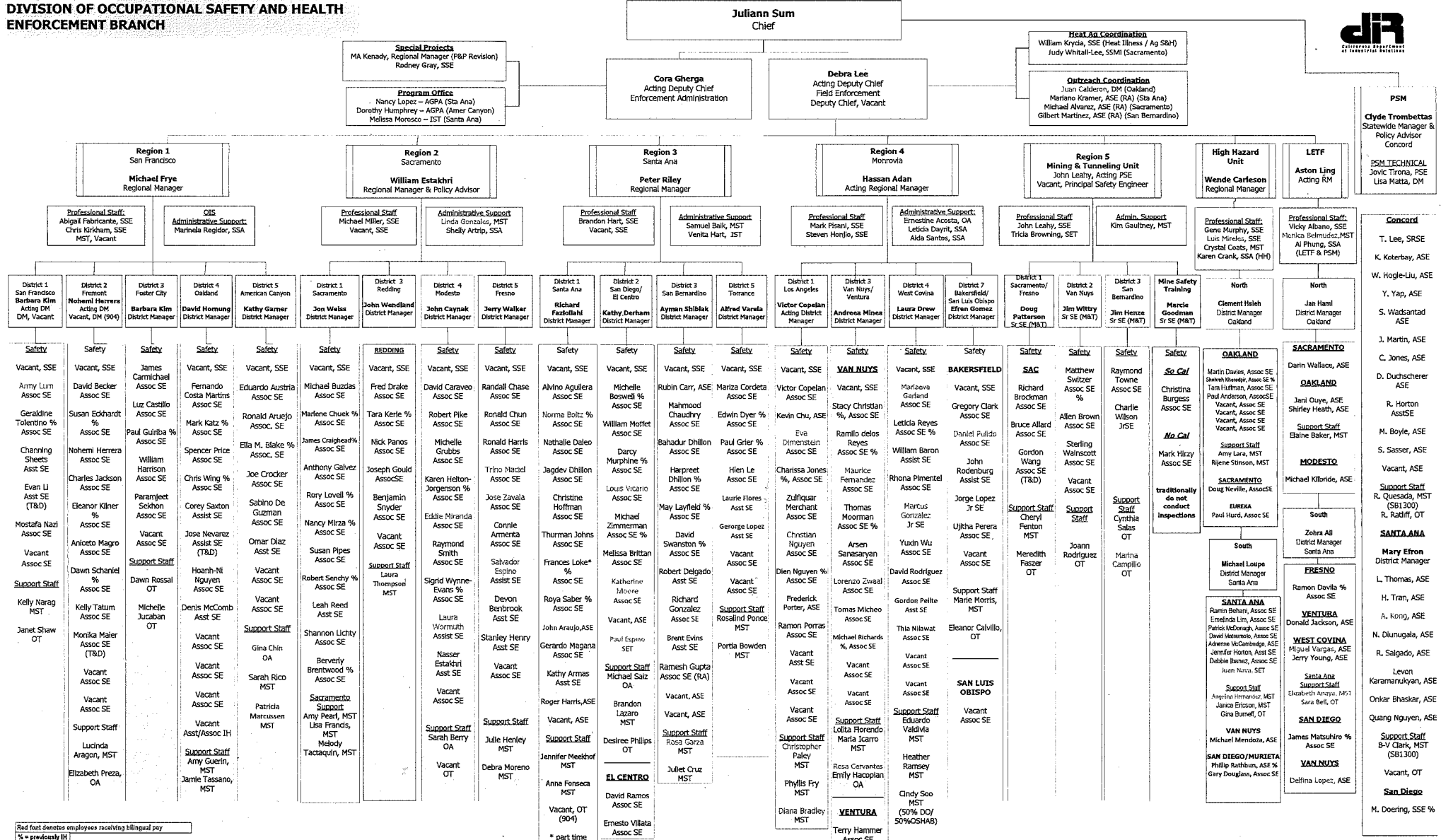
**Division of Occupational Safety and Health
Health, Safety, Medical and Training**



Red font denotes employees receiving bilingual pay

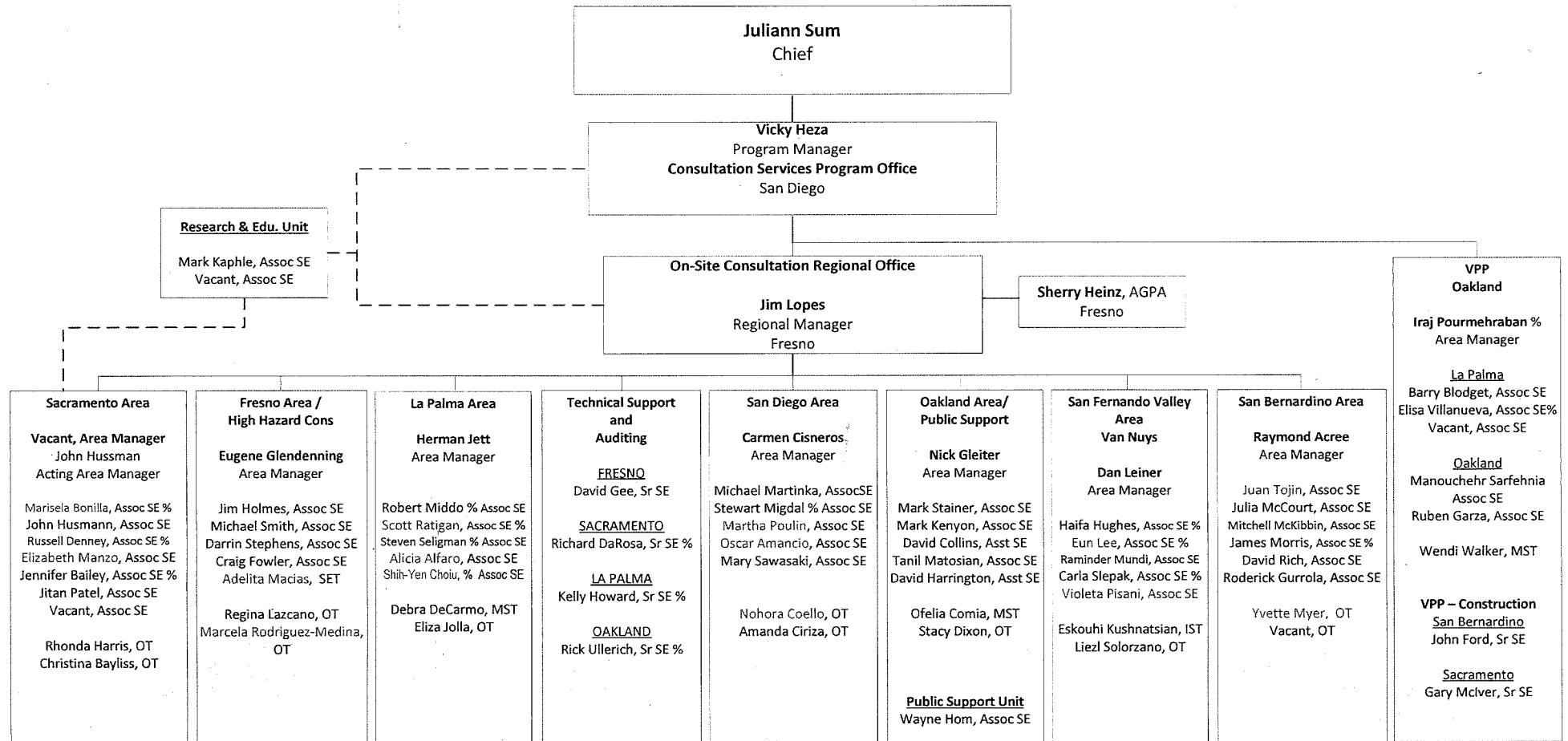
% = formerly IH

**DIVISION OF OCCUPATIONAL SAFETY AND HEALTH
ENFORCEMENT BRANCH**



Red font denotes employees receiving bilingual pay
% = previously IH
PSE - Principal Safety Engineer; RM - Regional Manager; DM - District Manager; SSE - Senior Safety Engineer; ASS/ASE - Associate Safety Engineer; ASSTSE - Assistant Safety Engineer; SET - Safety Engineer Technician; ASE - Junior Safety Engineer
SSM - Staff Services Manager; AGPA - Associate Governmental Program Analyst; SSA - Staff Services Analyst; MST - Management Services Tech; IST - Information System Tech; OT - Office Tech; OA - Office Assistant; RA - Retired Annuitant; T&D - Training and Development; TAU - Temporary Authorization Appointment

**Division of Occupational Safety and Health
Consultation Services Branch**



Red font denotes employees receiving bilingual pay

% = formerly IH

Revised 8/4/2015