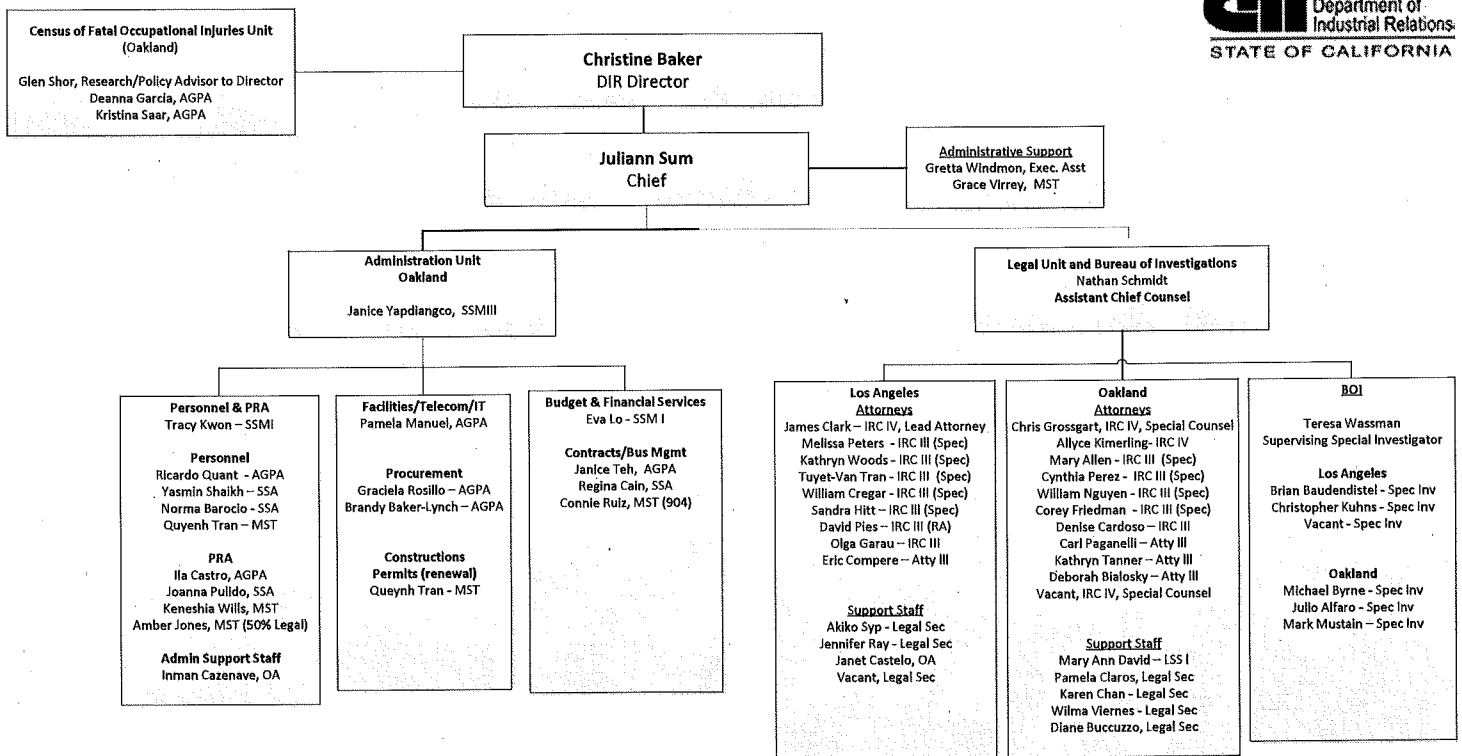
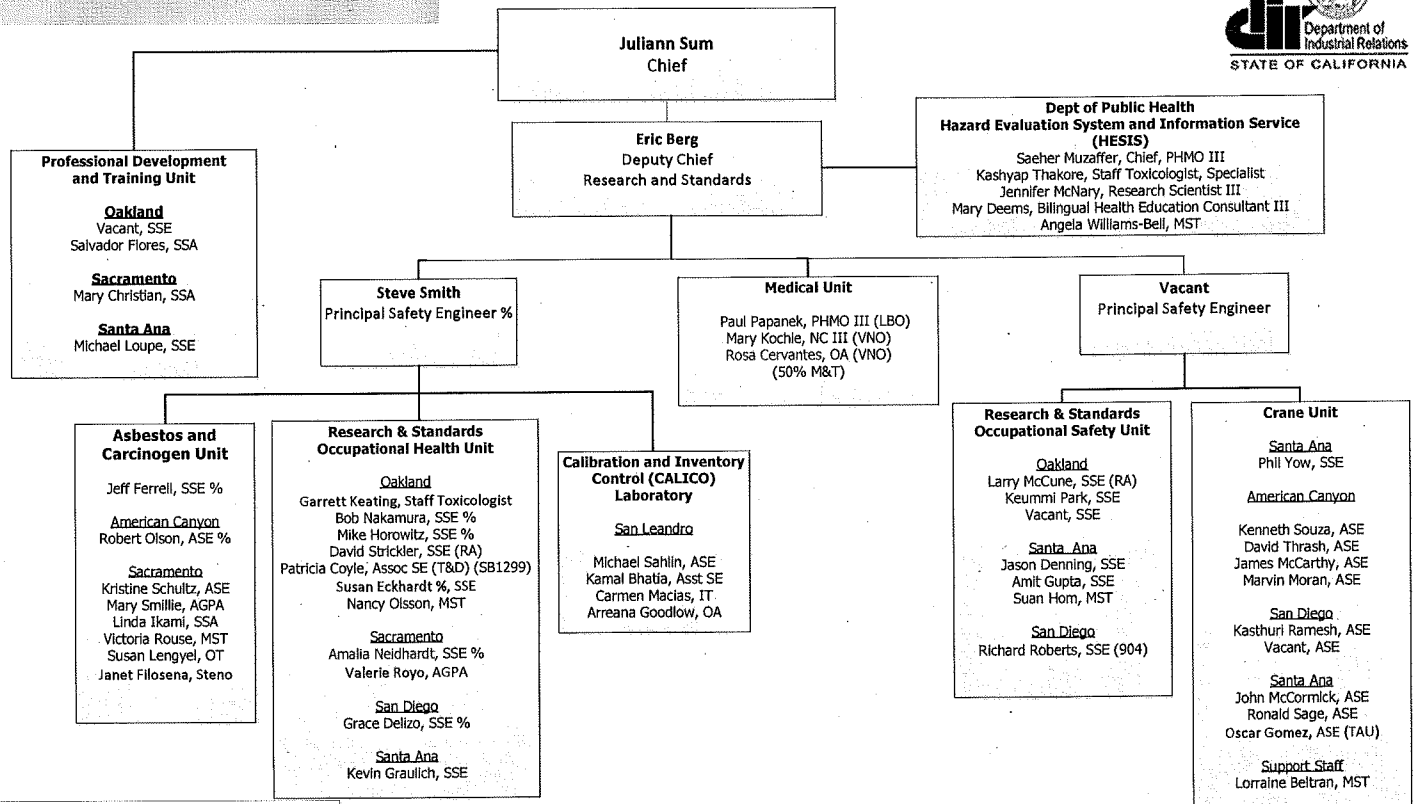


**DIVISION OF OCCUPATIONAL SAFETY AND HEALTH
ADMINISTRATION/LEGAL-BOI**



Red font denotes bilingual pay
Revised 2/9/2017

**Division of Occupational Safety and Health
Health, Safety, Medical and Training**

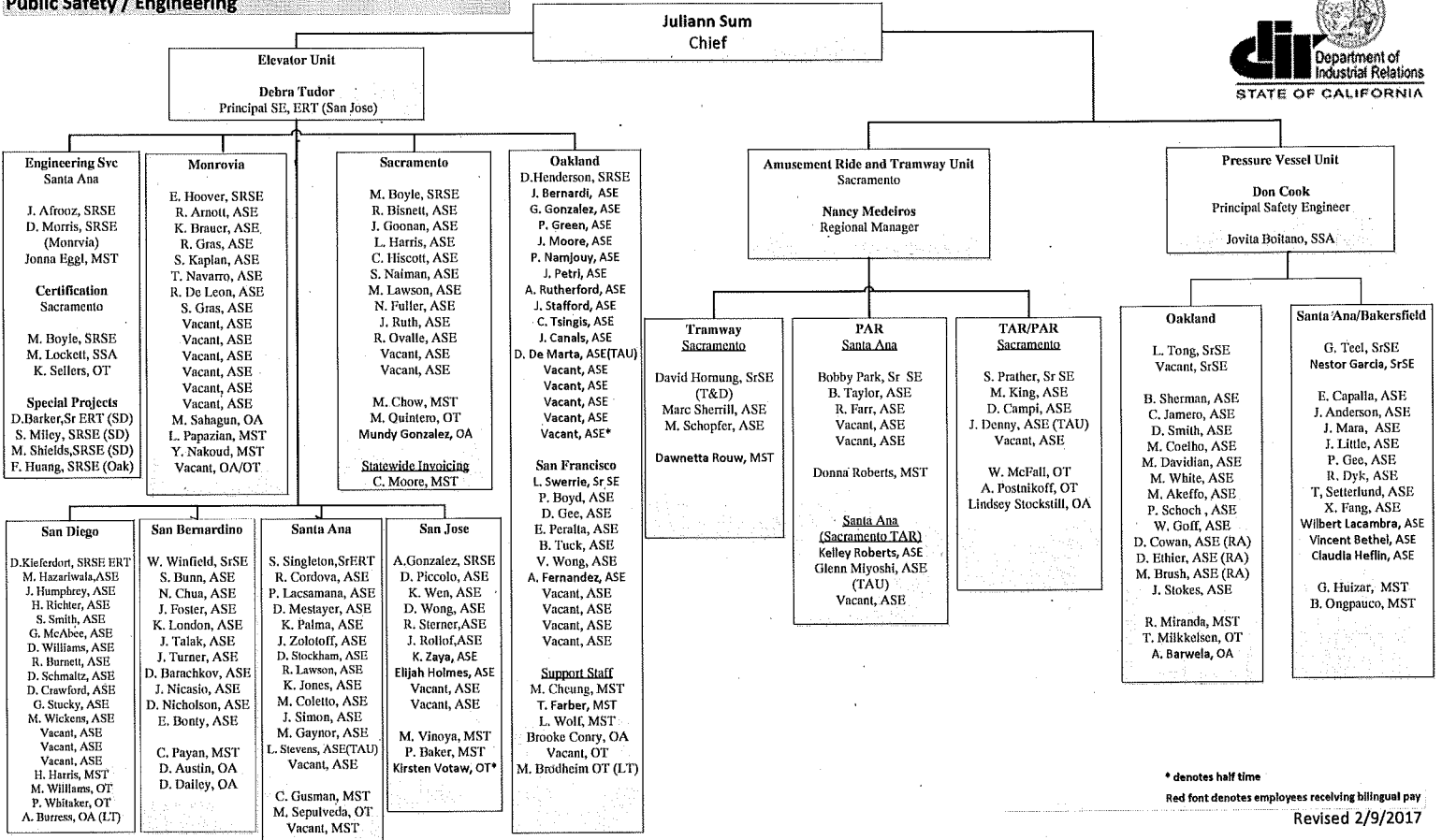


Red font denotes employees receiving bilingual pay

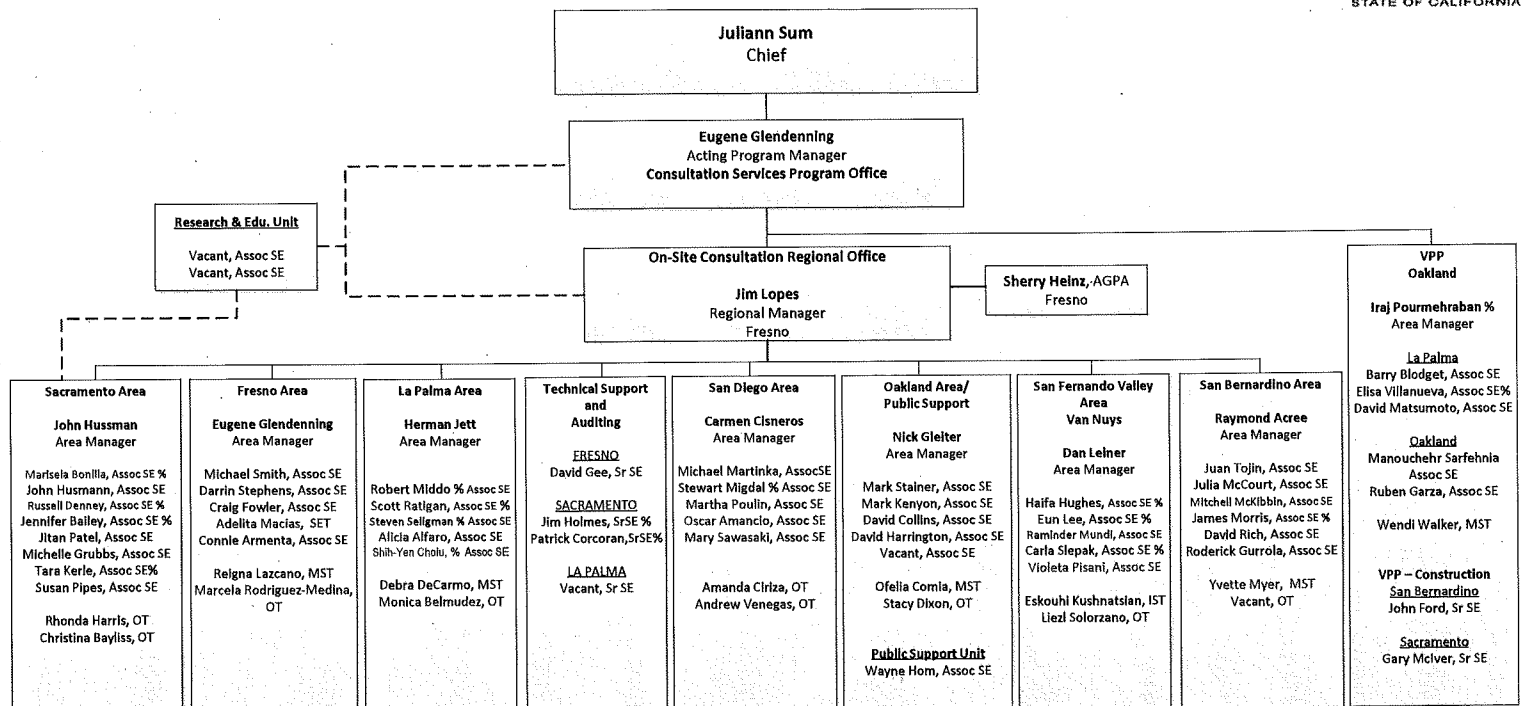
% = formerly IH

Revised 2/9/2017

**Division of Occupational Safety and Health
Public Safety / Engineering**



**Division of Occupational Safety and Health
Consultation Services Branch**



Red font denotes employees receiving bilingual pay
% = formerly IH

Revised 2/9/2017