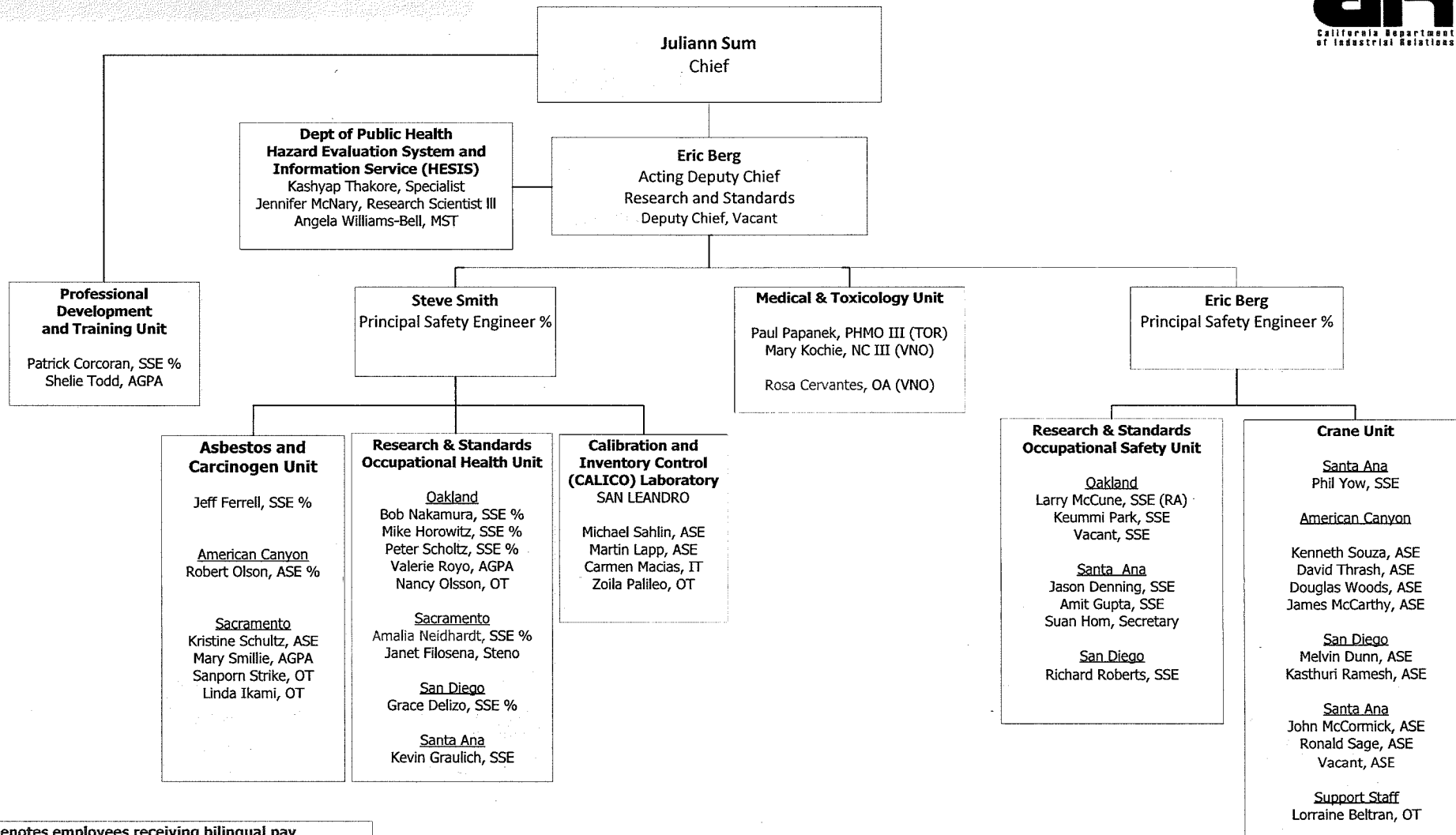
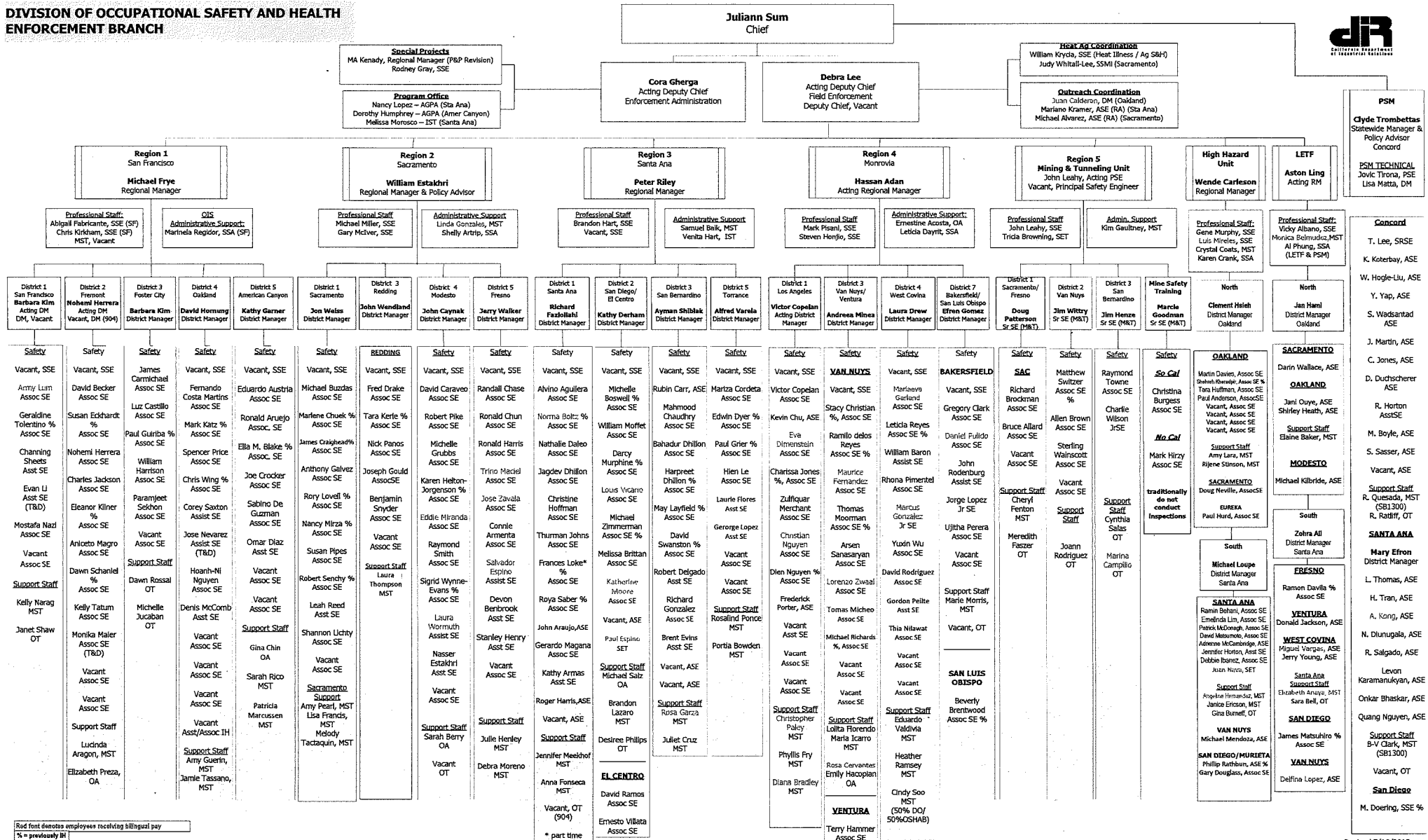


**Division of Occupational Safety and Health  
Health, Safety, Medical and Training**



Red font denotes employees receiving bilingual pay  
% = formerly IH

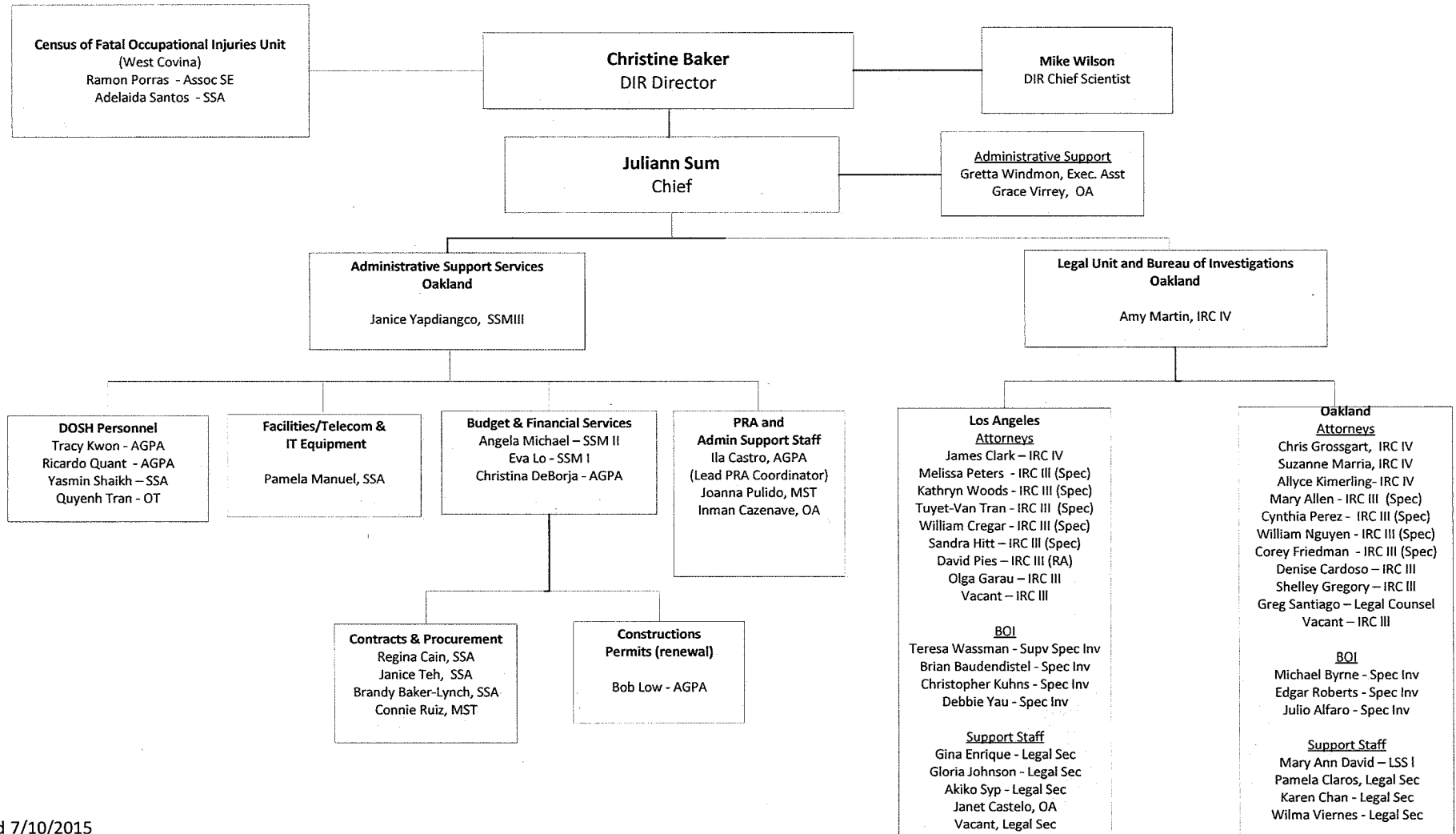
**DIVISION OF OCCUPATIONAL SAFETY AND HEALTH  
ENFORCEMENT BRANCH**



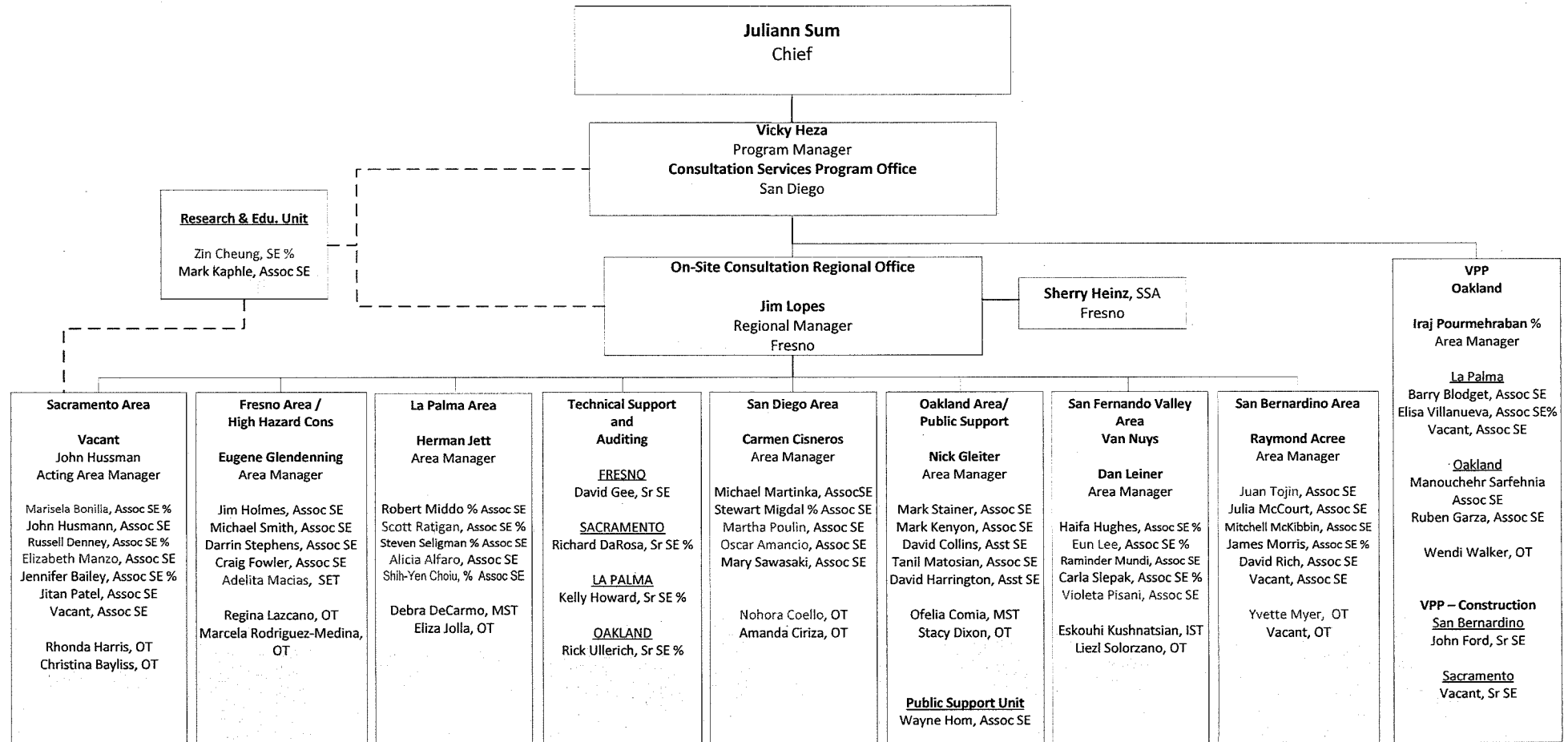
Red font denotes employees receiving bilingual pay  
% = previously in

PSE - Principal Safety Engineer; RM - Regional Manager; DM - District Manager; SSE - Senior Safety Engineer; ASSC/ASE - Associate Safety Engineer; ASSE - Assistant Safety Engineer; SET - Safety Engineer Technician; PSE - Junior Safety Engineer  
SSM - Staff Services Manager; AGPA - Associate Government Program Analyst; SSA - Staff Services Analyst; MST - Management Services Tech; IST - Information System Tech; OT - Office Tech; OA - Office Assistant; RA - Retired Annular; T&D - Training and Development; TAU - Temporary Authorization Appointment

**DIVISION OF OCCUPATIONAL SAFETY AND HEALTH  
ADMINISTRATION/LEGAL-BOI**



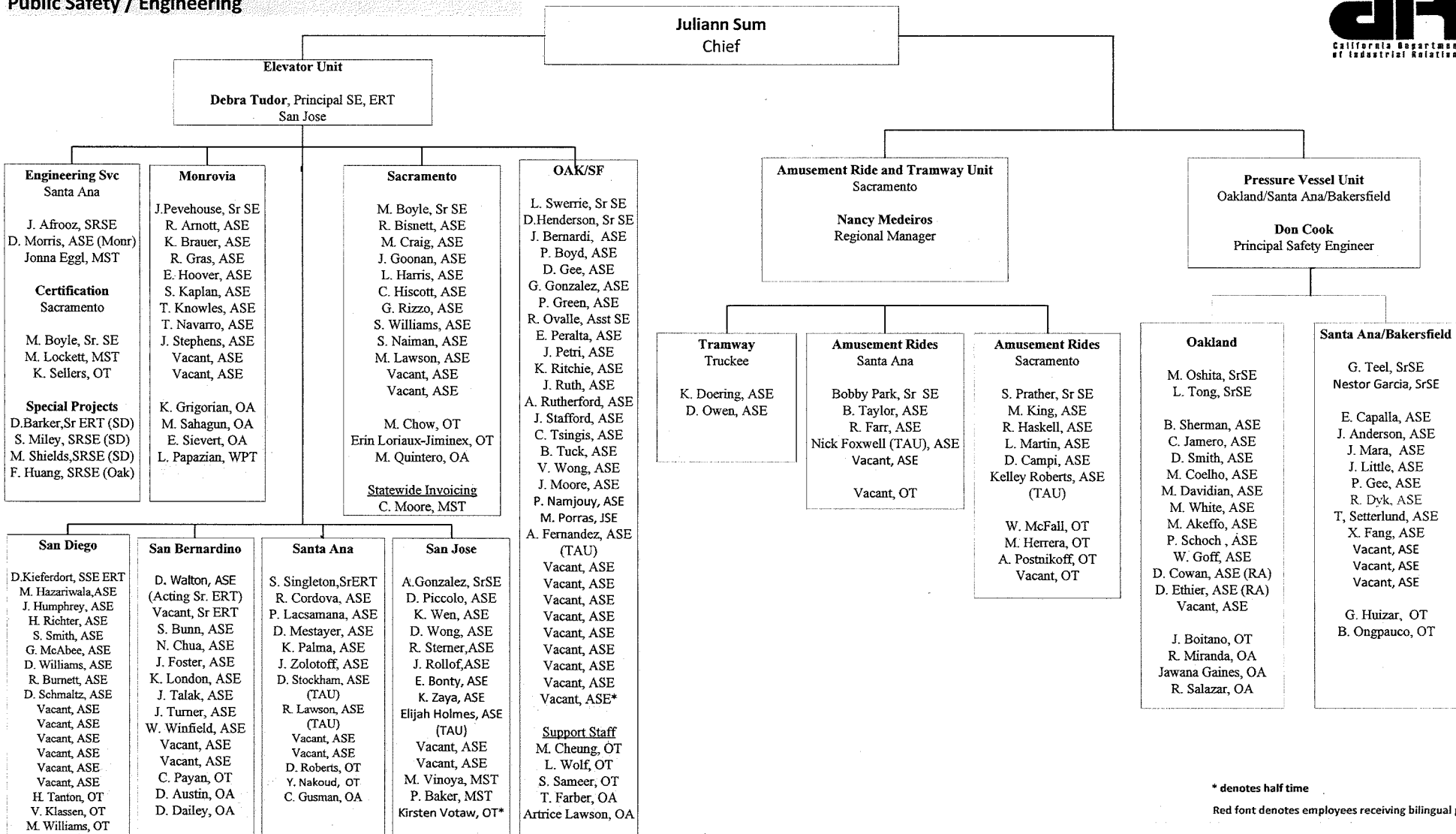
**Division of Occupational Safety and Health  
Consultation Services Branch**



Red font denotes employees receiving bilingual pay

% = formerly IH

**Division of Occupational Safety and Health  
Public Safety / Engineering**



\* denotes half time  
Red font denotes employees receiving bilingual pay