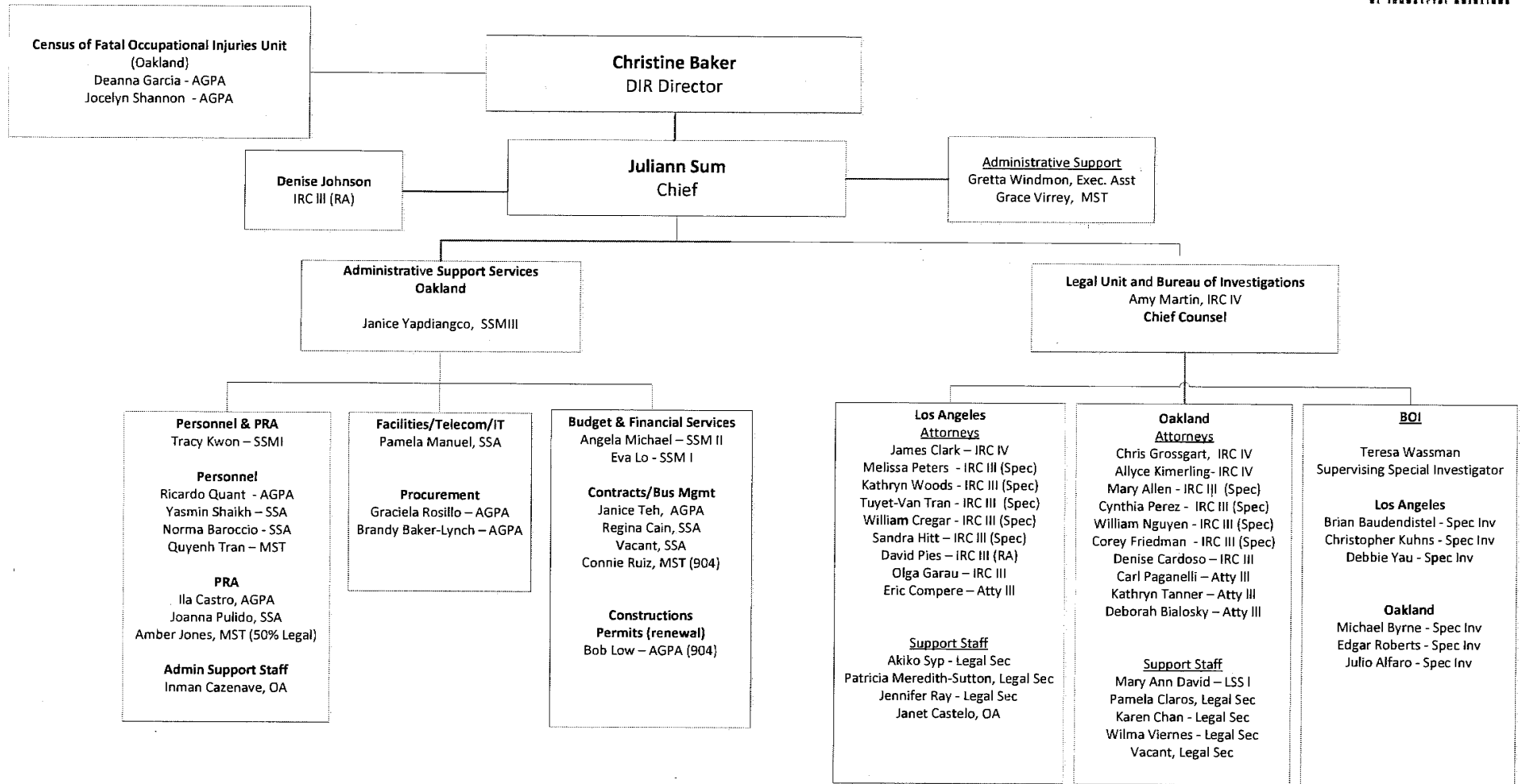
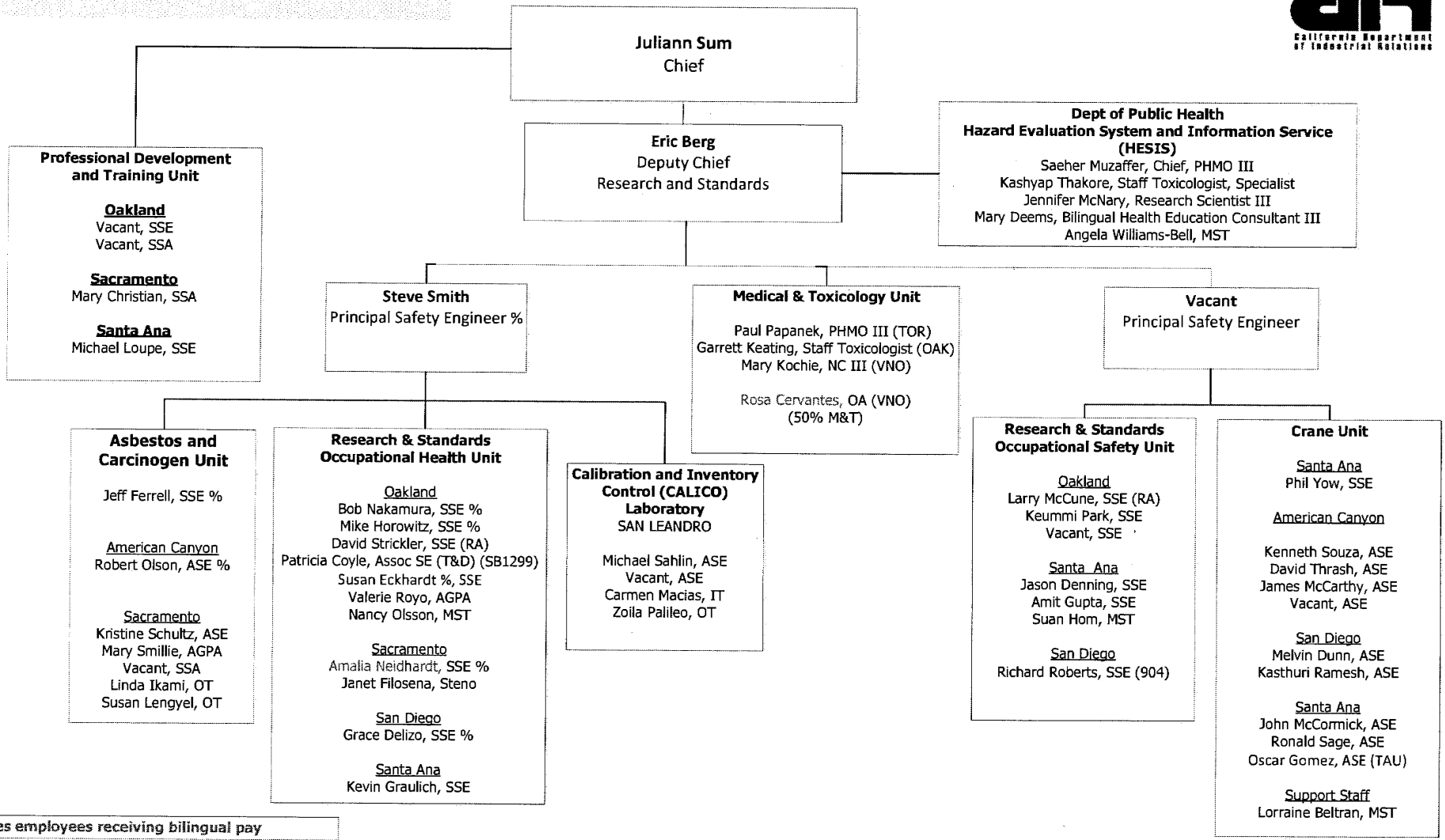


**DIVISION OF OCCUPATIONAL SAFETY AND HEALTH  
ADMINISTRATION/LEGAL-BOI**

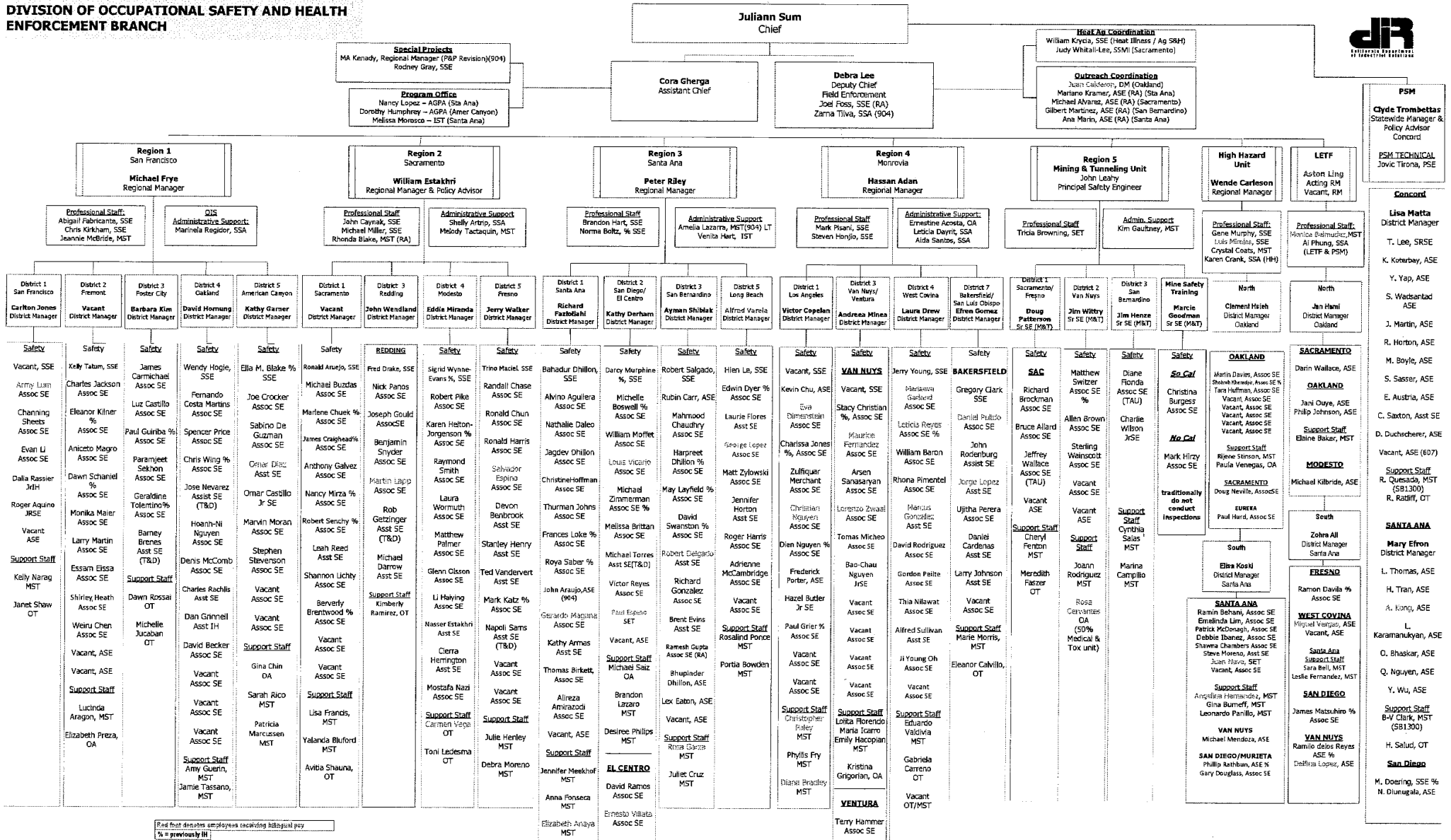


**Division of Occupational Safety and Health  
Health, Safety, Medical and Training**

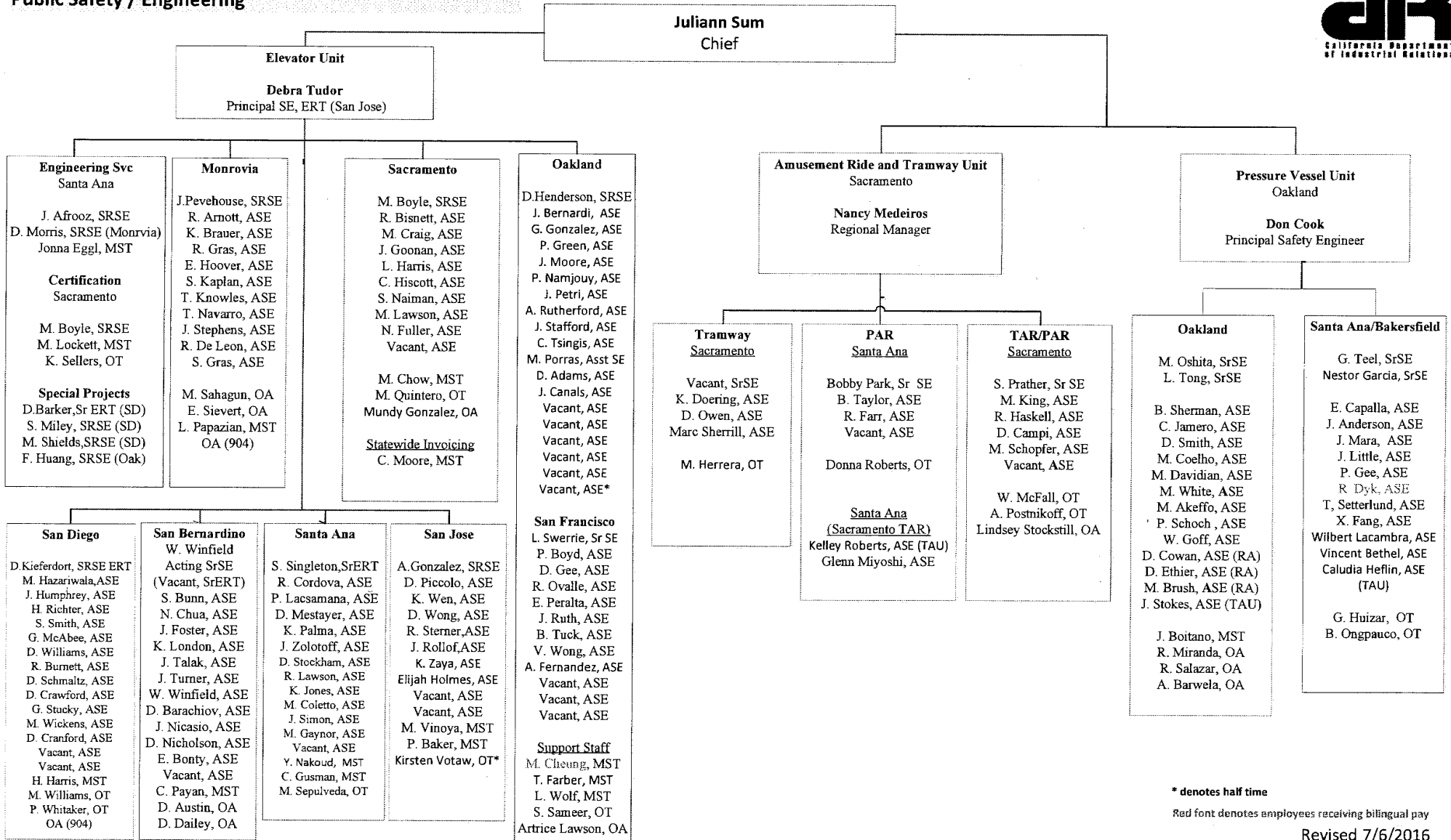


Red font denotes employees receiving bilingual pay  
% = formerly IH

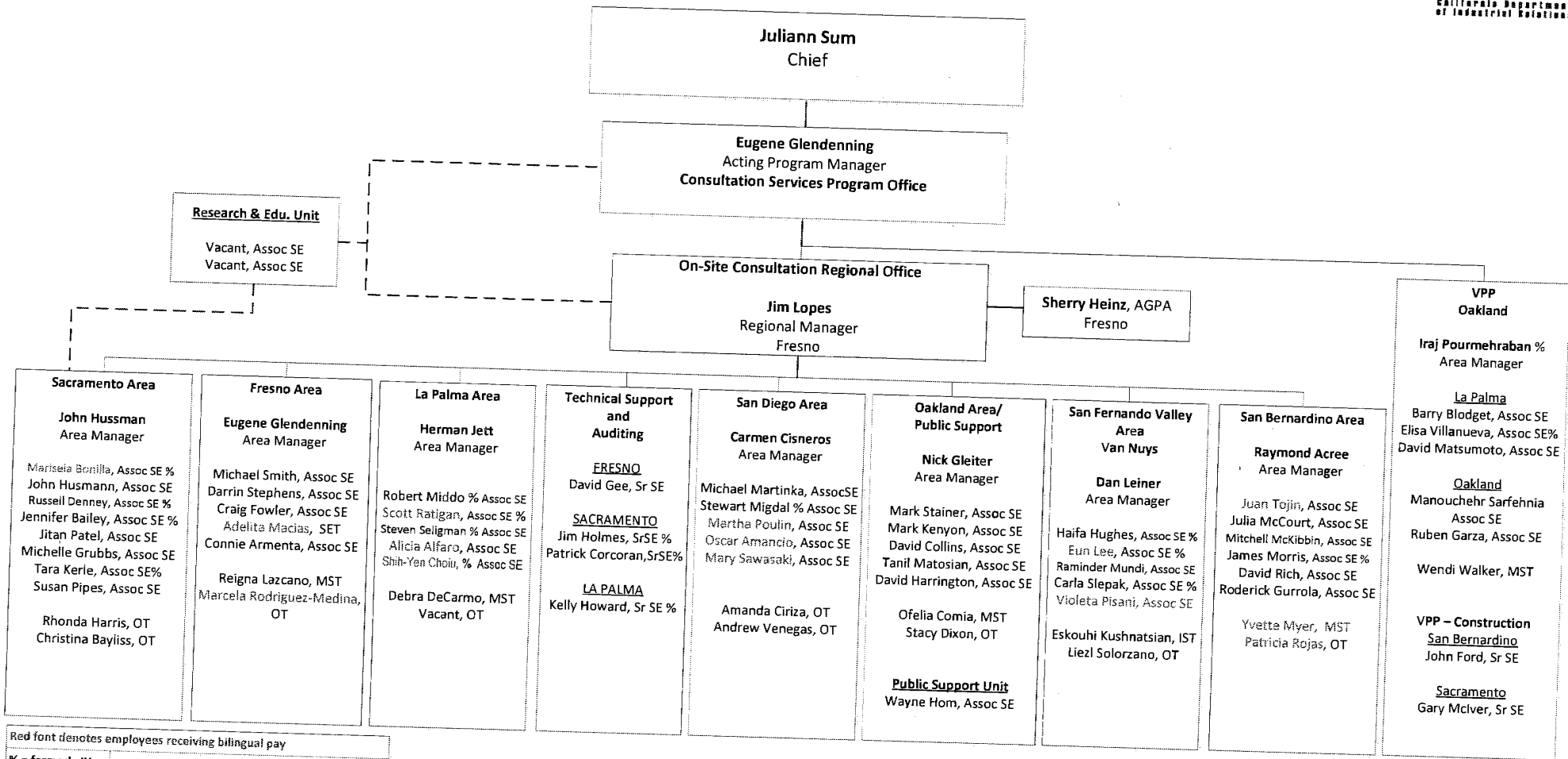
**DIVISION OF OCCUPATIONAL SAFETY AND HEALTH  
ENFORCEMENT BRANCH**



**Division of Occupational Safety and Health  
Public Safety / Engineering**



**Division of Occupational Safety and Health  
Consultation Services Branch**



Red font denotes employees receiving bilingual pay  
% = formerly IH

Revised 7/6/2016