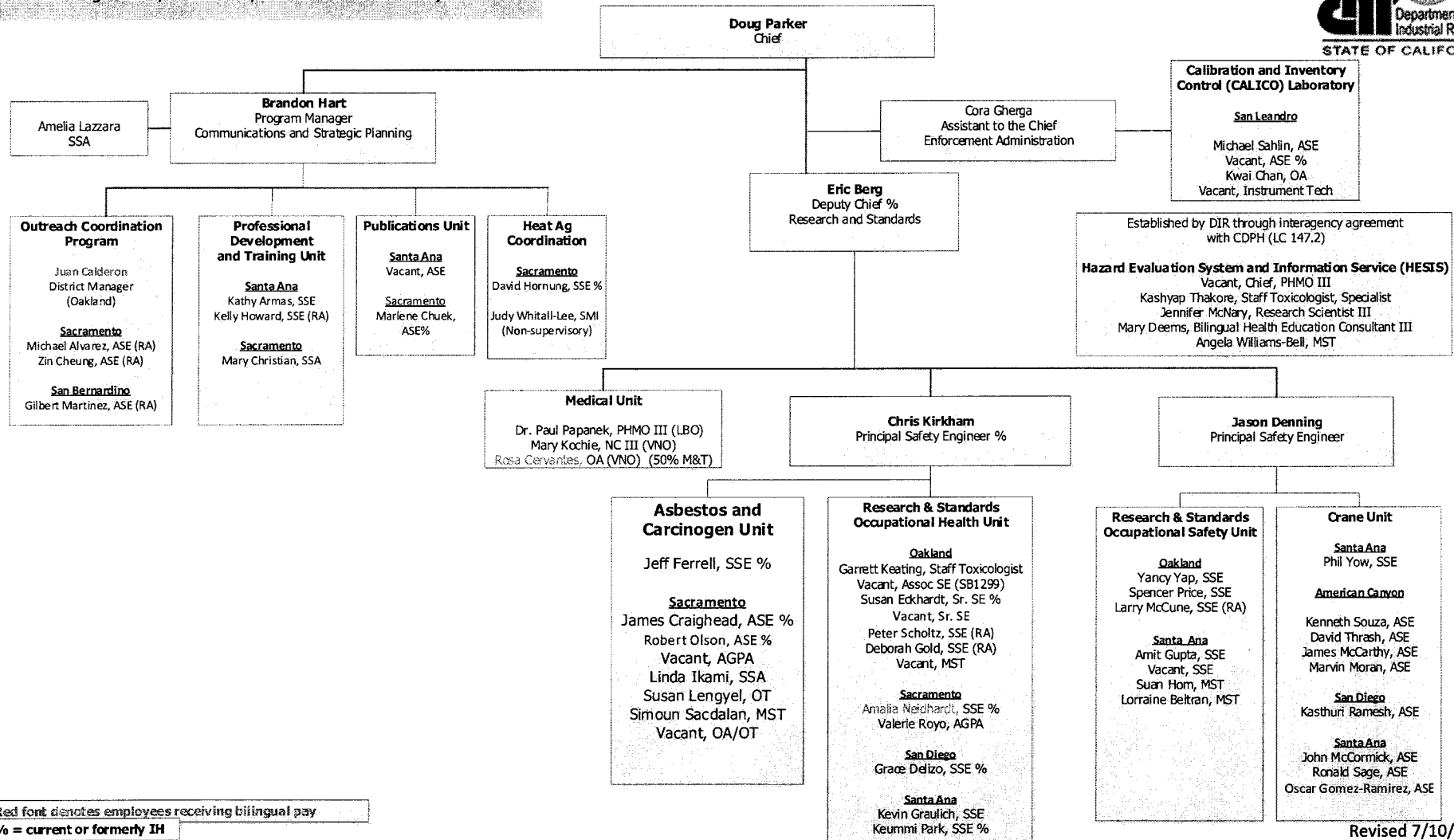


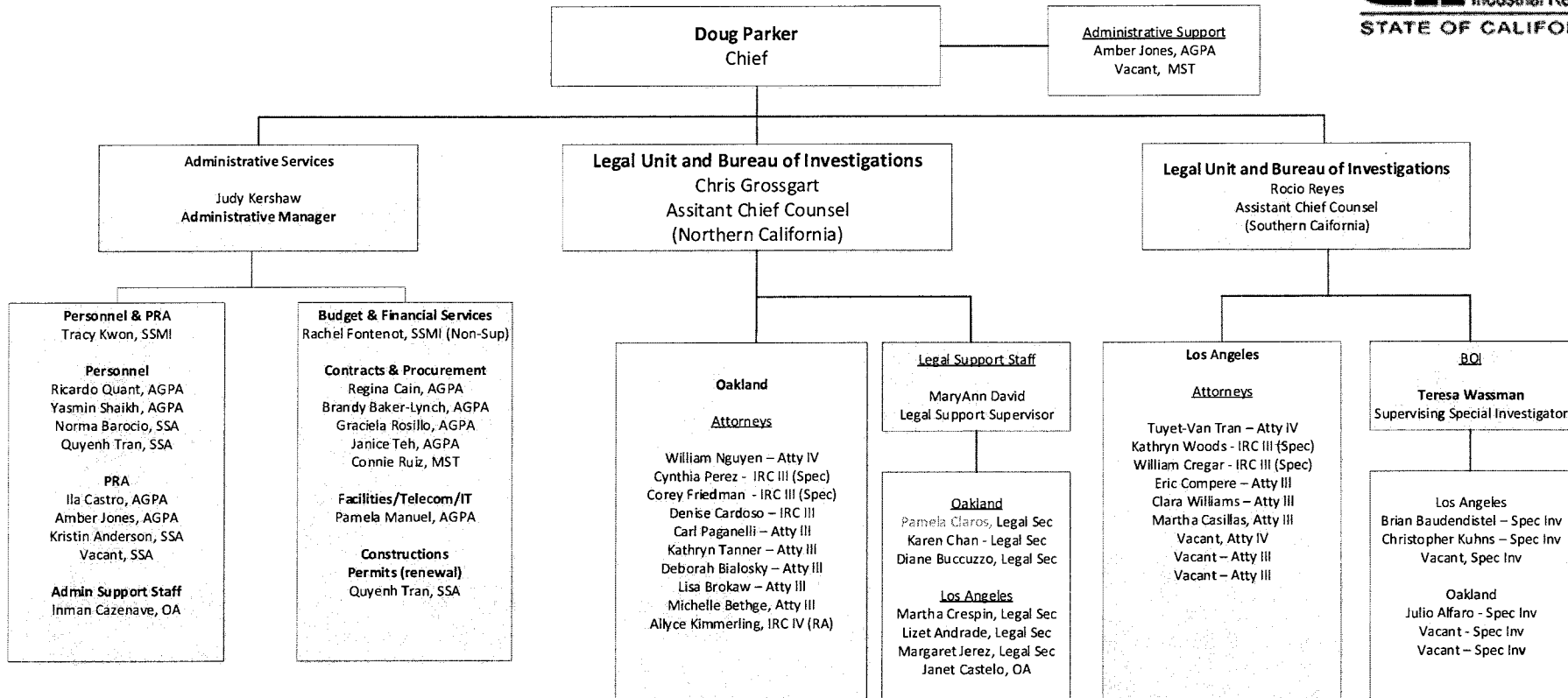
**Division of Occupational Safety and Health  
 Communications, Research and Standards, Medical Unit, Asbestos  
 and Carcinogen Unit, Crane Unit, and CALICO Laboratory**



Red font denotes employees receiving bilingual pay  
 % = current or formerly IH

Revised 7/10/2020

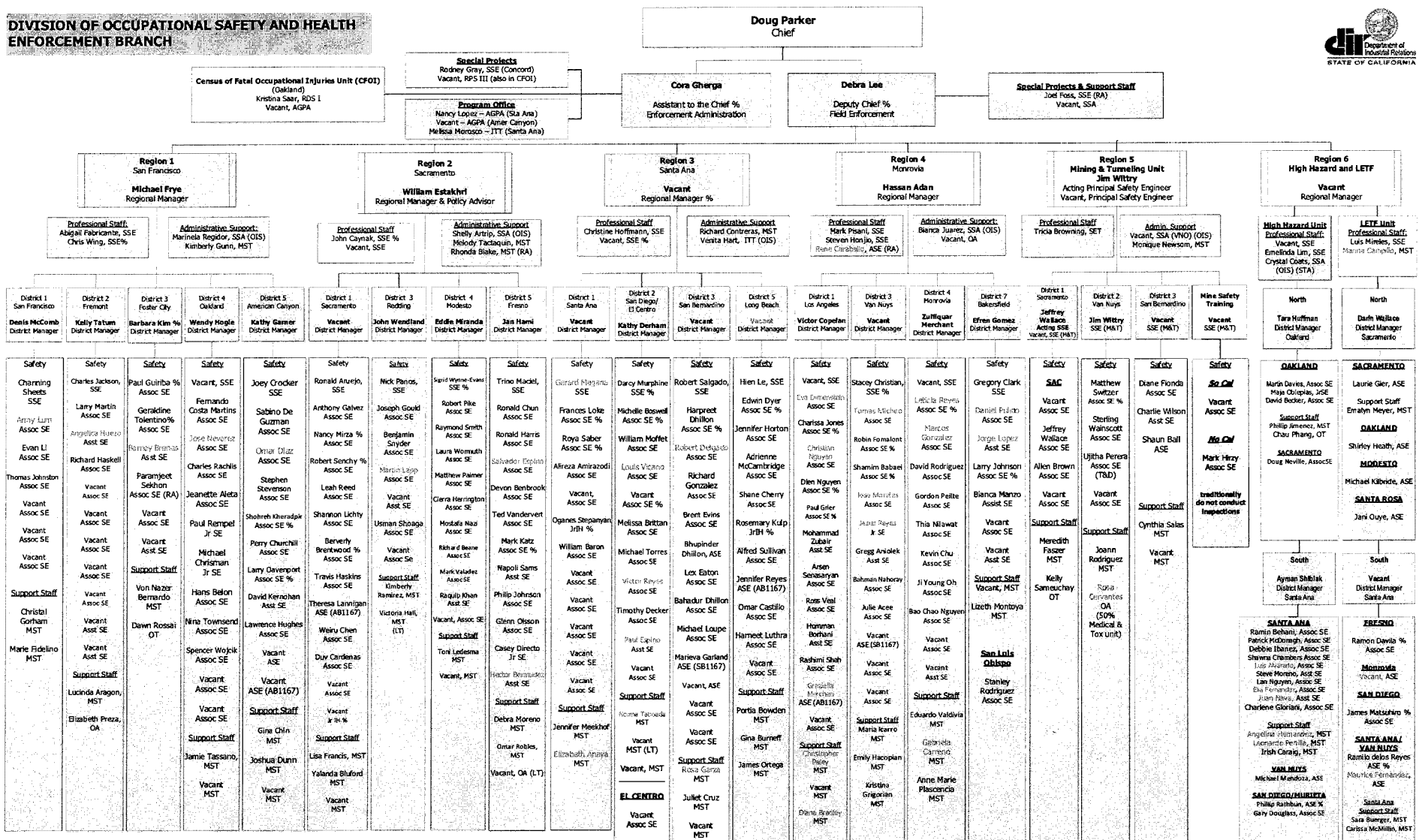
**DIVISION OF OCCUPATIONAL SAFETY AND HEALTH  
ADMINISTRATIVE SERVICES, LEGAL UNIT, AND BUREAU OF INVESTIGATIONS**



Red font denotes bilingual pay

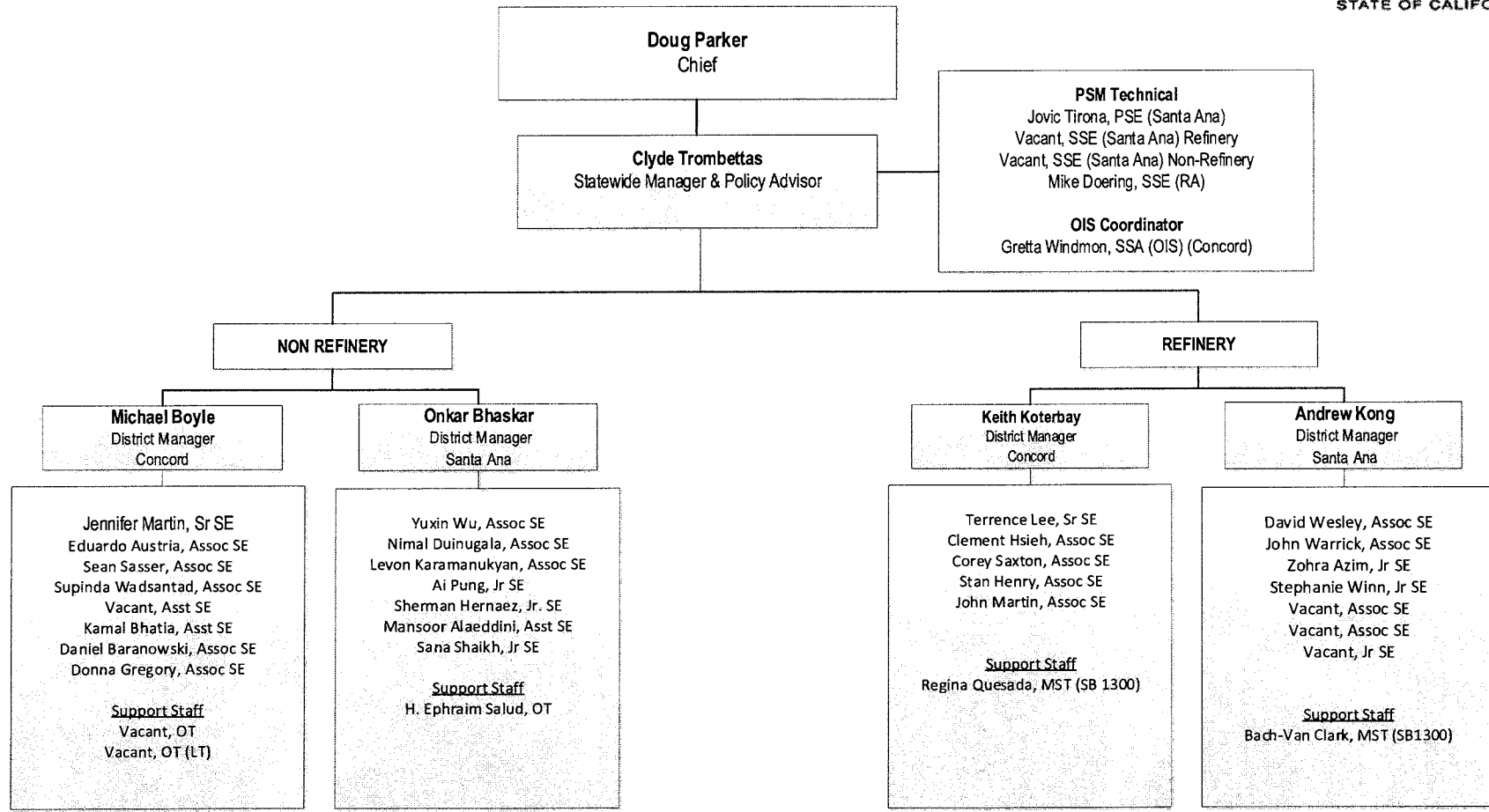
Revised 7/13/20

**DIVISION OF OCCUPATIONAL SAFETY AND HEALTH  
ENFORCEMENT BRANCH**



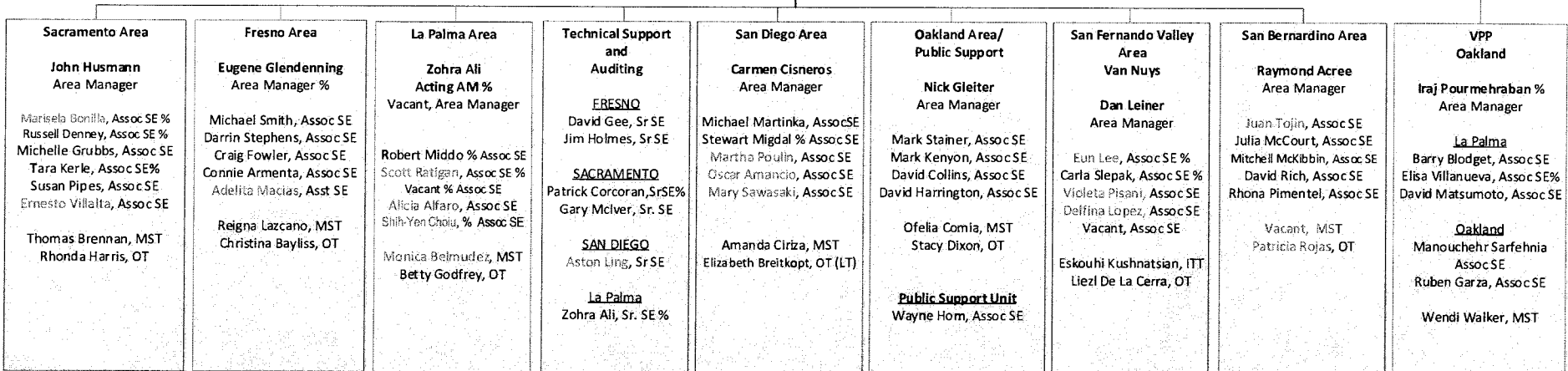
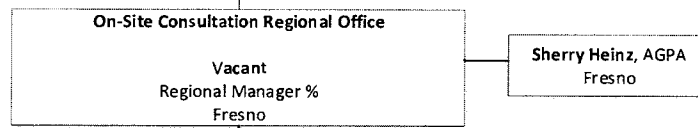
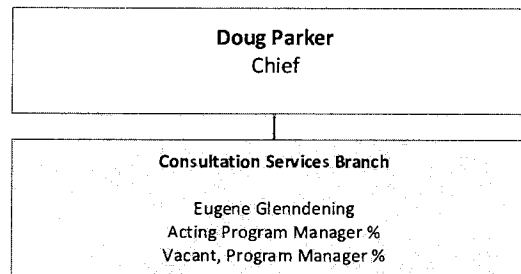
Red text denotes employees receiving temporary pay.  
% = current or previously HI

**DIVISION OF OCCUPATIONAL SAFETY AND HEALTH  
ENFORCEMENT BRANCH - PROCESS SAFETY MANAGEMENT UNIT**



Red font denotes employees receiving bilingual pay

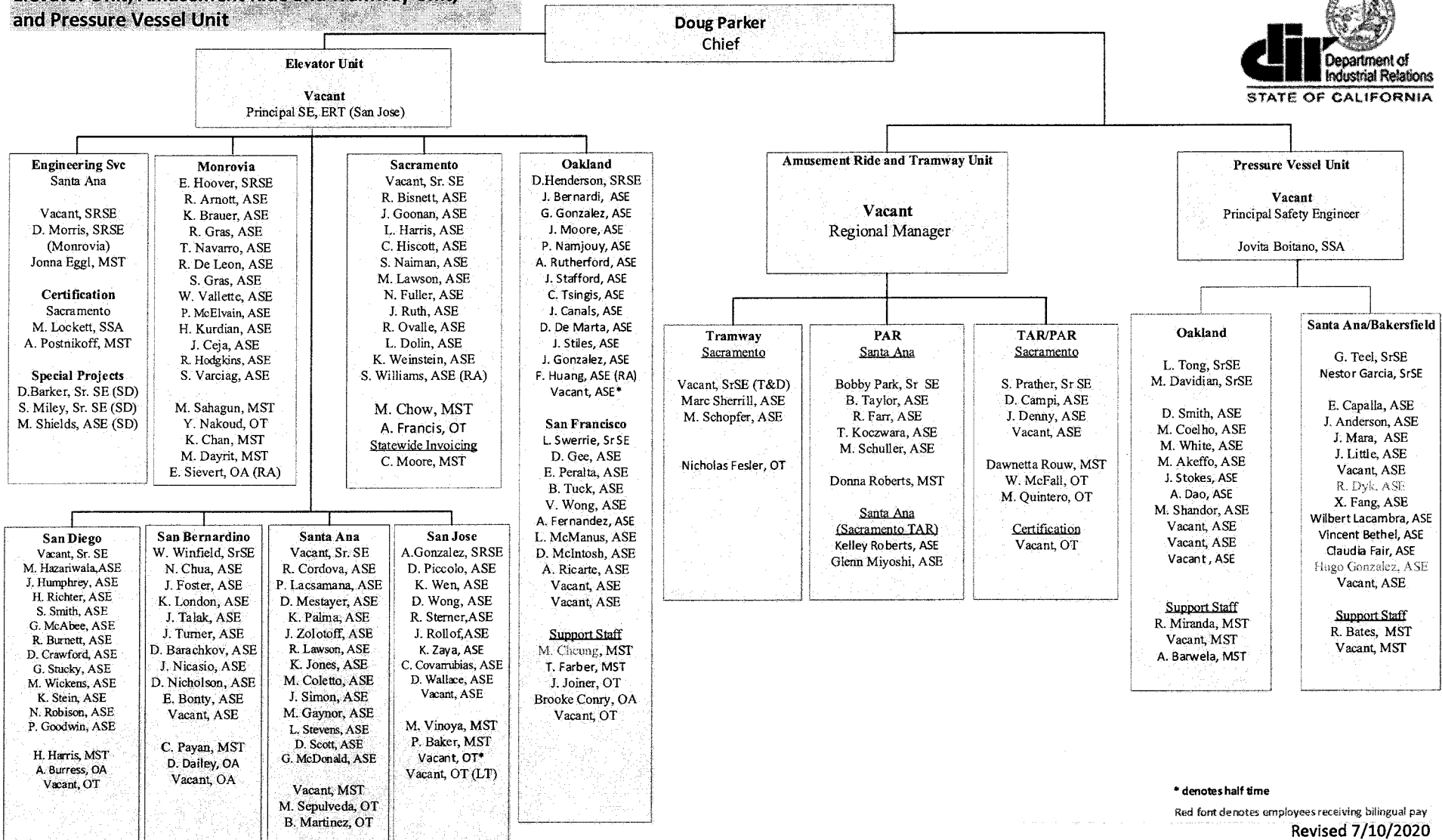
**Division of Occupational Safety and Health  
Consultation Services Branch**



Red font denotes employees receiving bilingual pay  
% = current or formerly IH

Revised 7/10/2020

**Division of Occupational Safety and Health  
Elevator Unit, Amusement Ride and Tramway Unit,  
and Pressure Vessel Unit**



\* denotes half time

Red font denotes employees receiving bilingual pay

Revised 7/10/2020