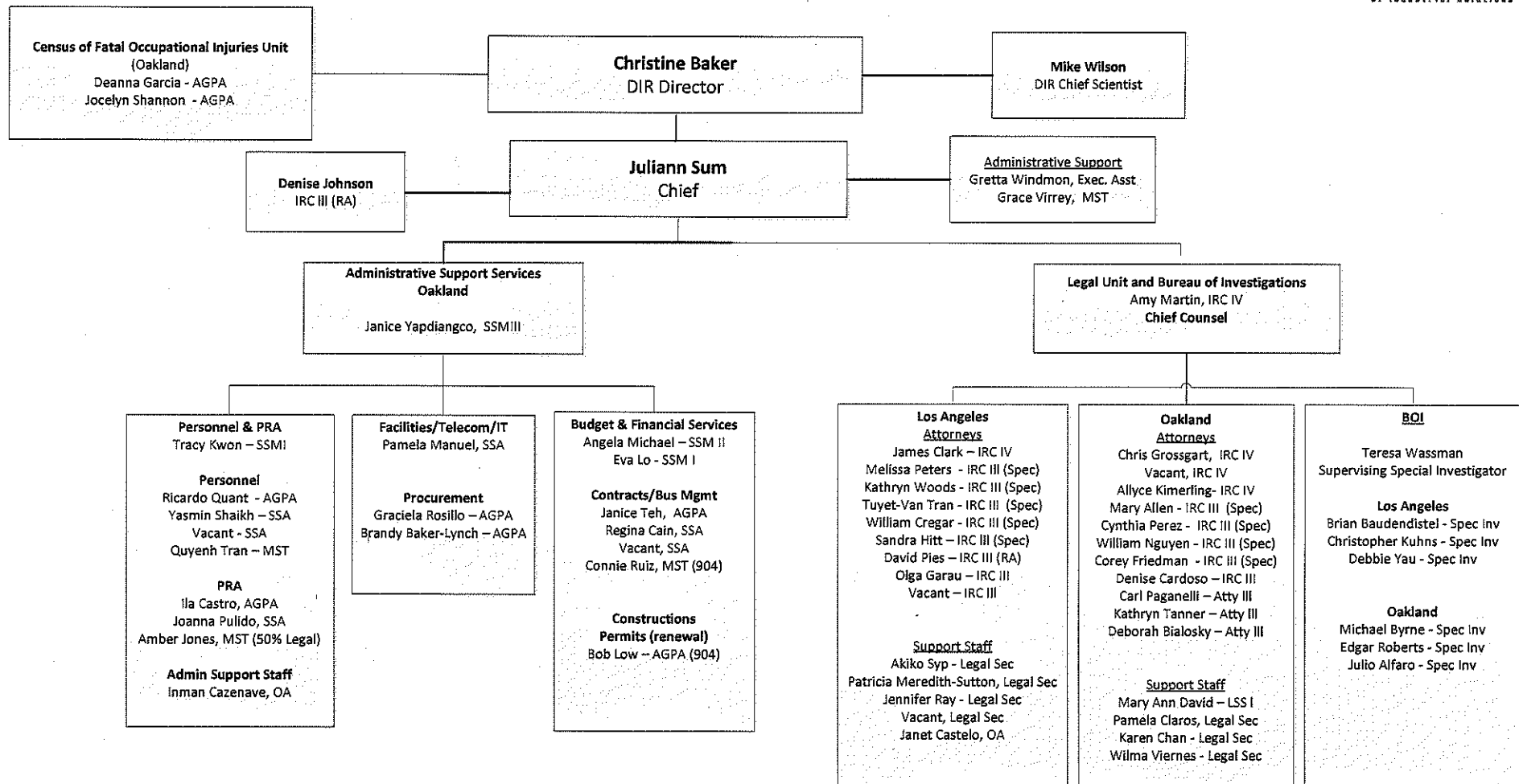
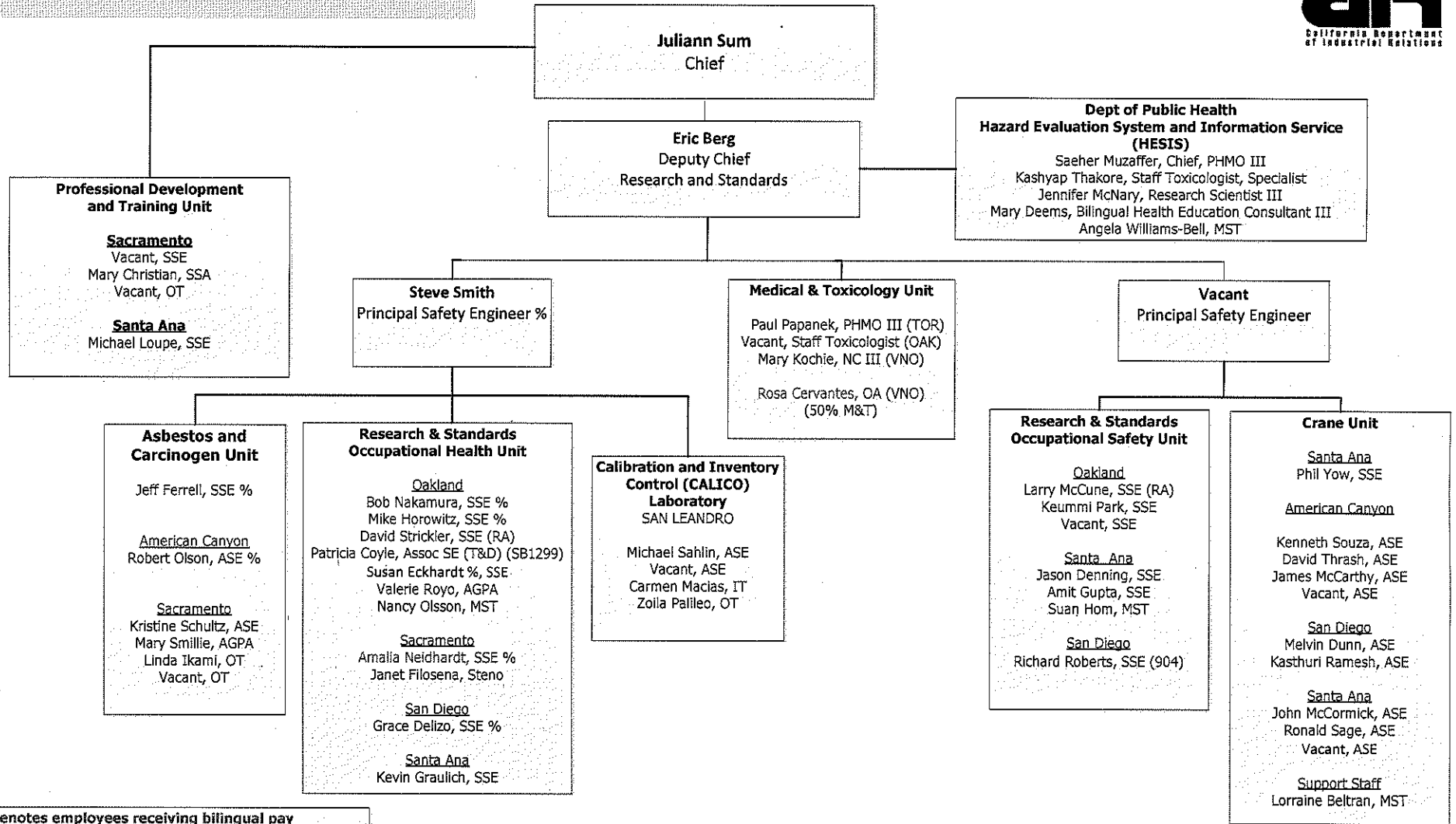


**DIVISION OF OCCUPATIONAL SAFETY AND HEALTH
ADMINISTRATION/LEGAL-BOI**

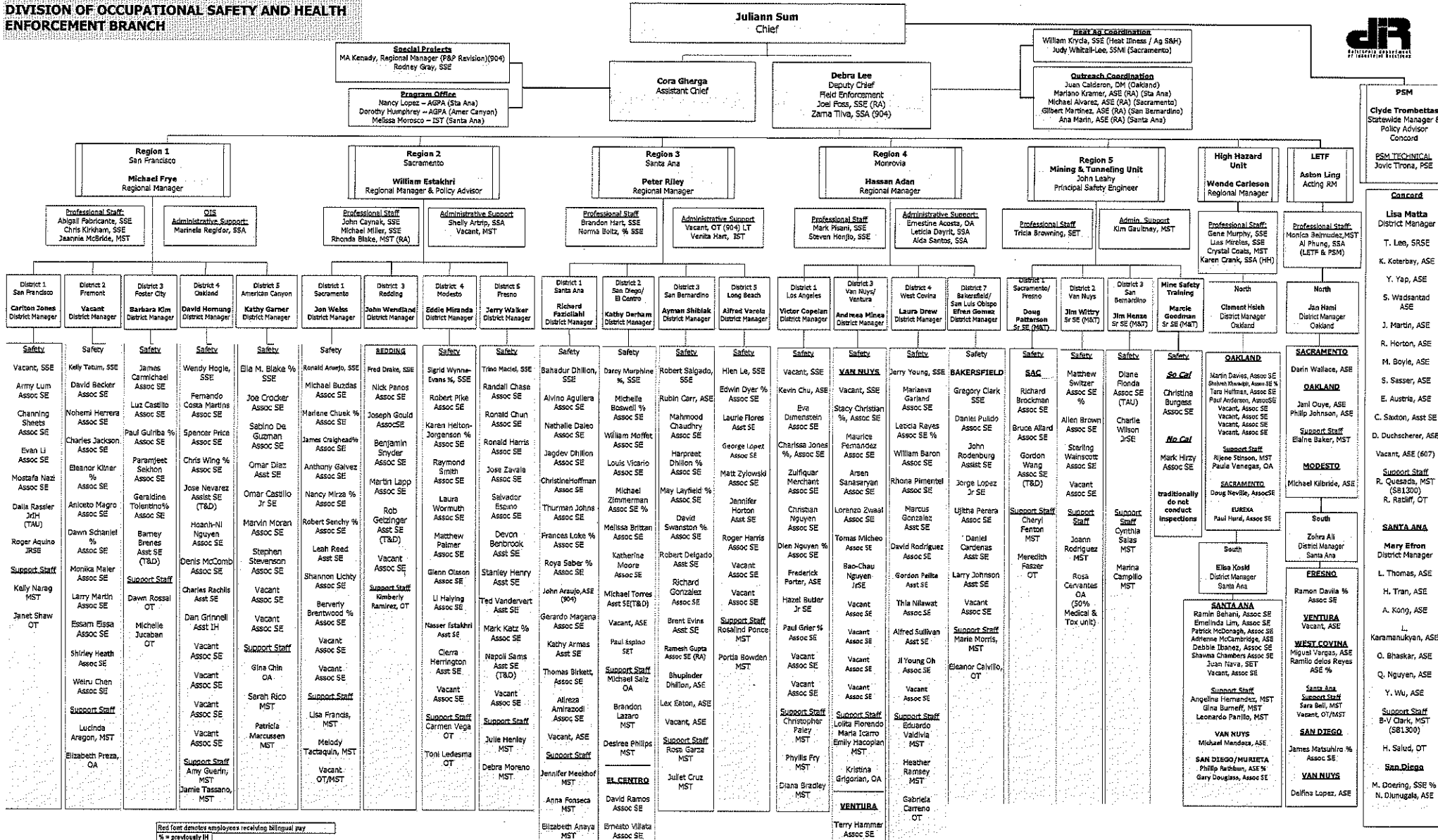


**Division of Occupational Safety and Health
Health, Safety, Medical and Training**



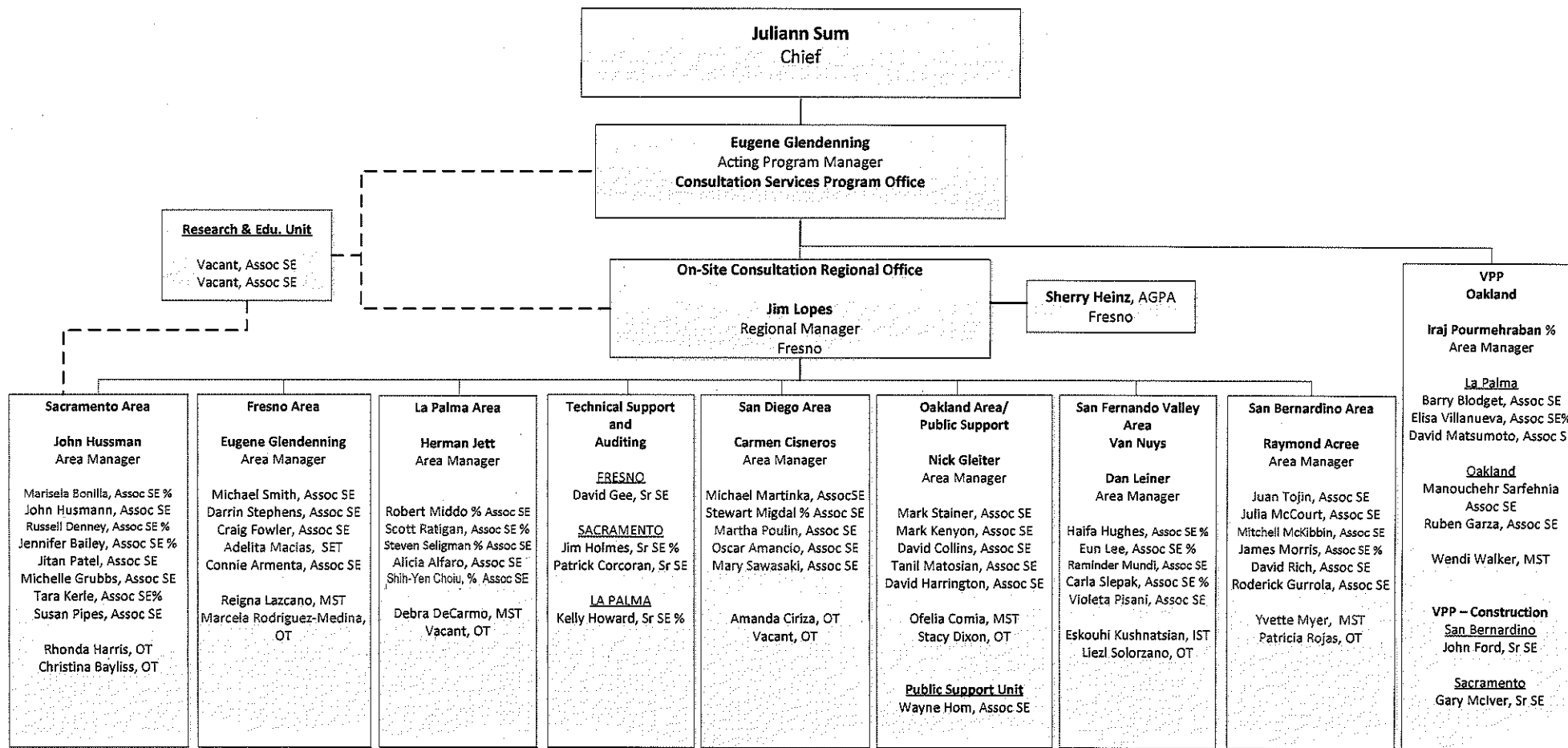
Red font denotes employees receiving bilingual pay
% = formerly IH

**DIVISION OF OCCUPATIONAL SAFETY AND HEALTH
ENFORCEMENT BRANCH**



PSM - Principal Safety Engineer; RM - Regional Manager; DM - District Manager; SSE - Senior Safety Engineer; Assoc SE - Associate Safety Engineer; SST - Safety Engineer Technician; JSE - Junior Safety Engineer
SSM - Staff Services Manager; AGPA - Associate Governmental Program Analyst; SSA - Staff Services Analyst; MST - Management Service Tech; IT - Information Systems Tech; OT - Office Tech; CA - Office Assistant; RA - Retired Annuitant; T&D - Training and Development; TAU - Temporary Authorization Appointment

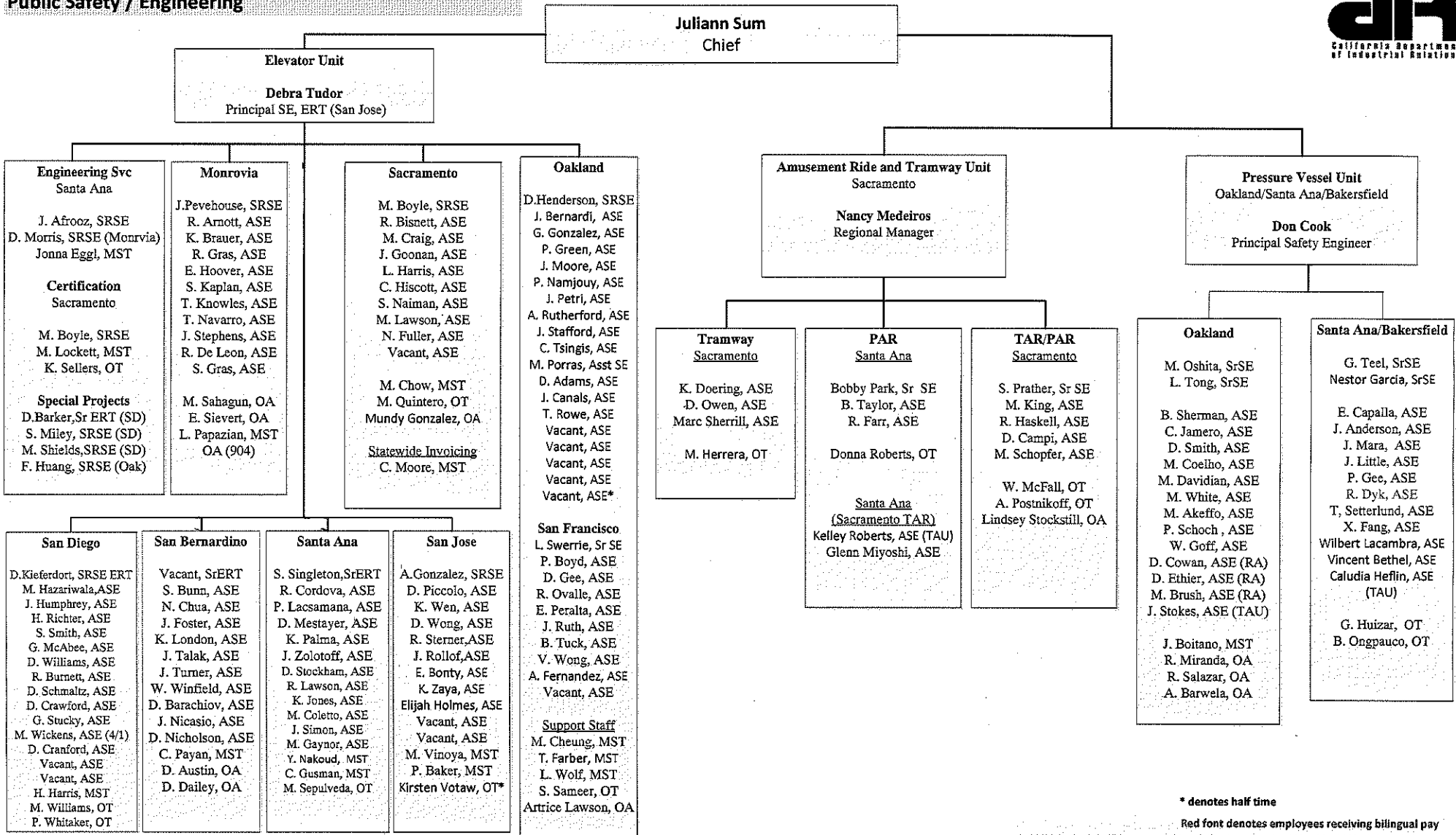
**Division of Occupational Safety and Health
Consultation Services Branch**



Red font denotes employees receiving bilingual pay

% = formerly IH

**Division of Occupational Safety and Health
Public Safety / Engineering**



* denotes half time

Red font denotes employees receiving bilingual pay

Revised 6/6/2016