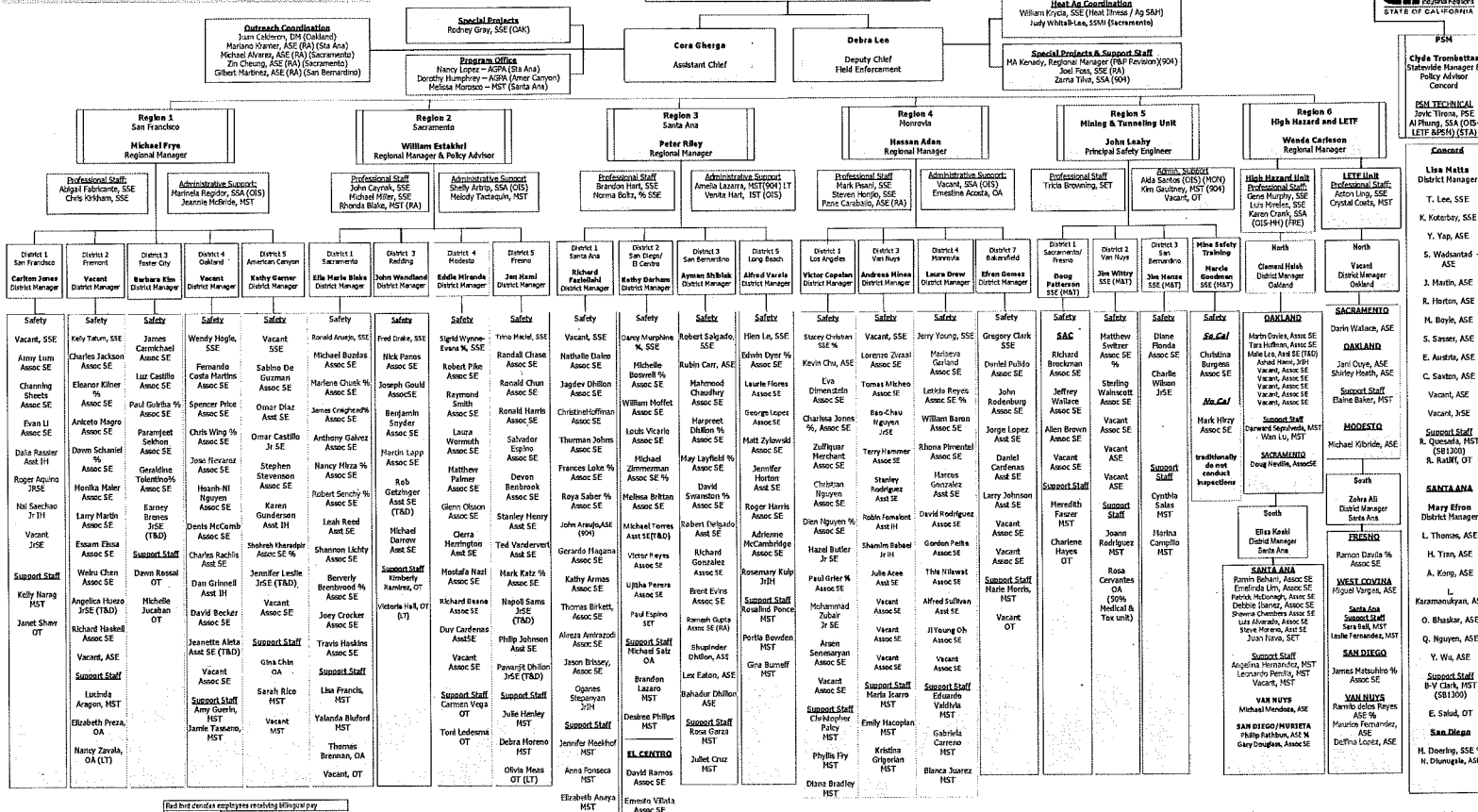


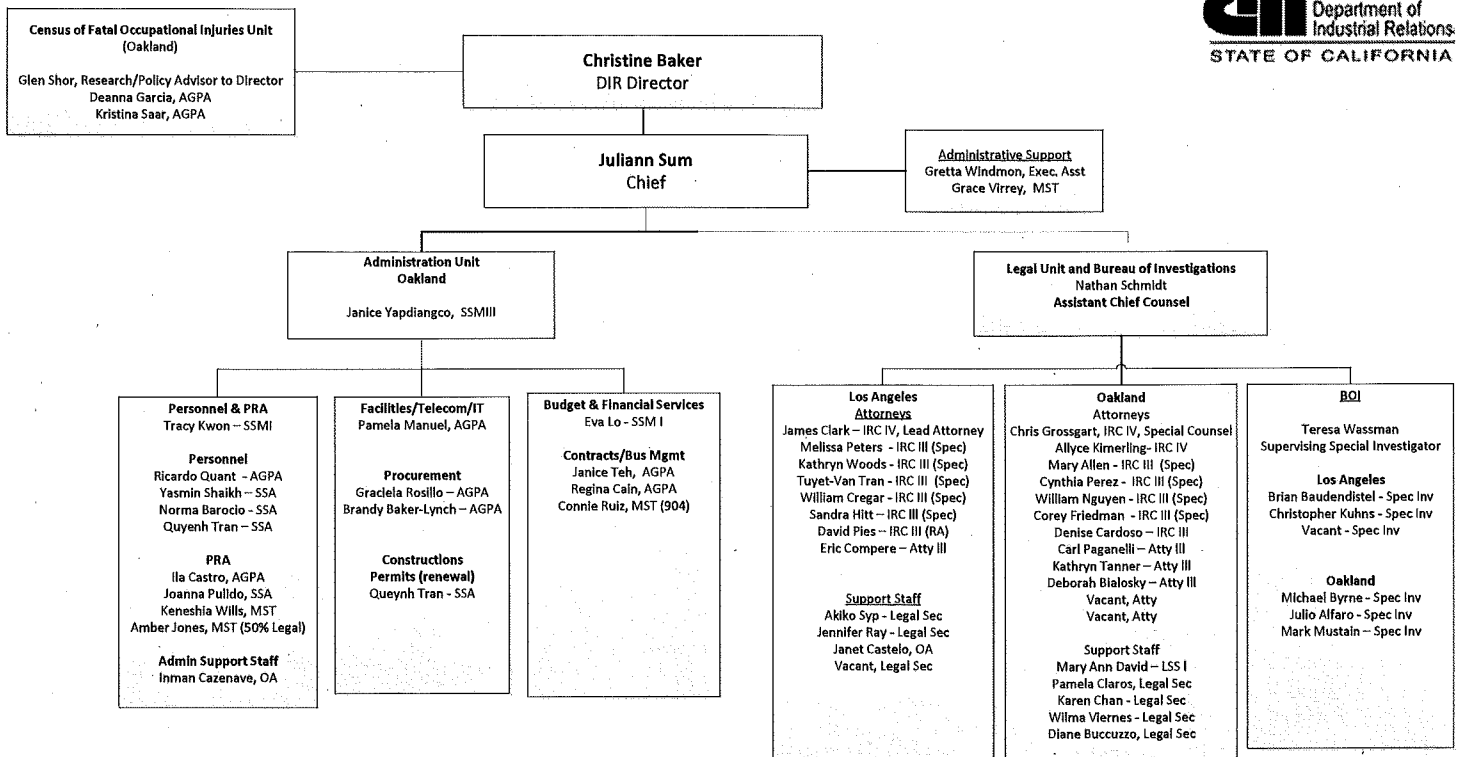
**DIVISION OF OCCUPATIONAL SAFETY AND HEALTH
ENFORCEMENT BRANCH**



Full-time employees... (Detailed text regarding employee status and compensation)

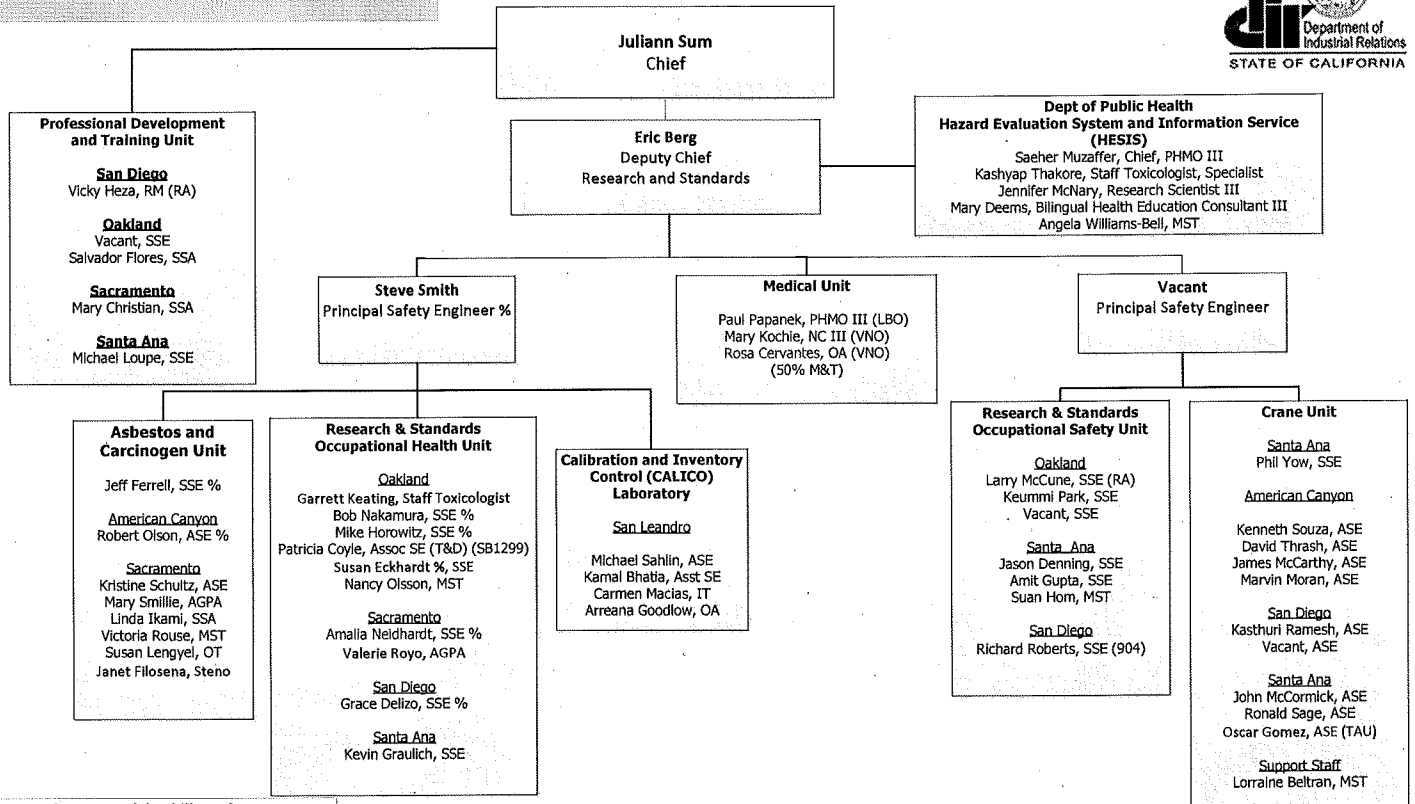
Revised 3/9/2017

**DIVISION OF OCCUPATIONAL SAFETY AND HEALTH
ADMINISTRATION/LEGAL-BOI**



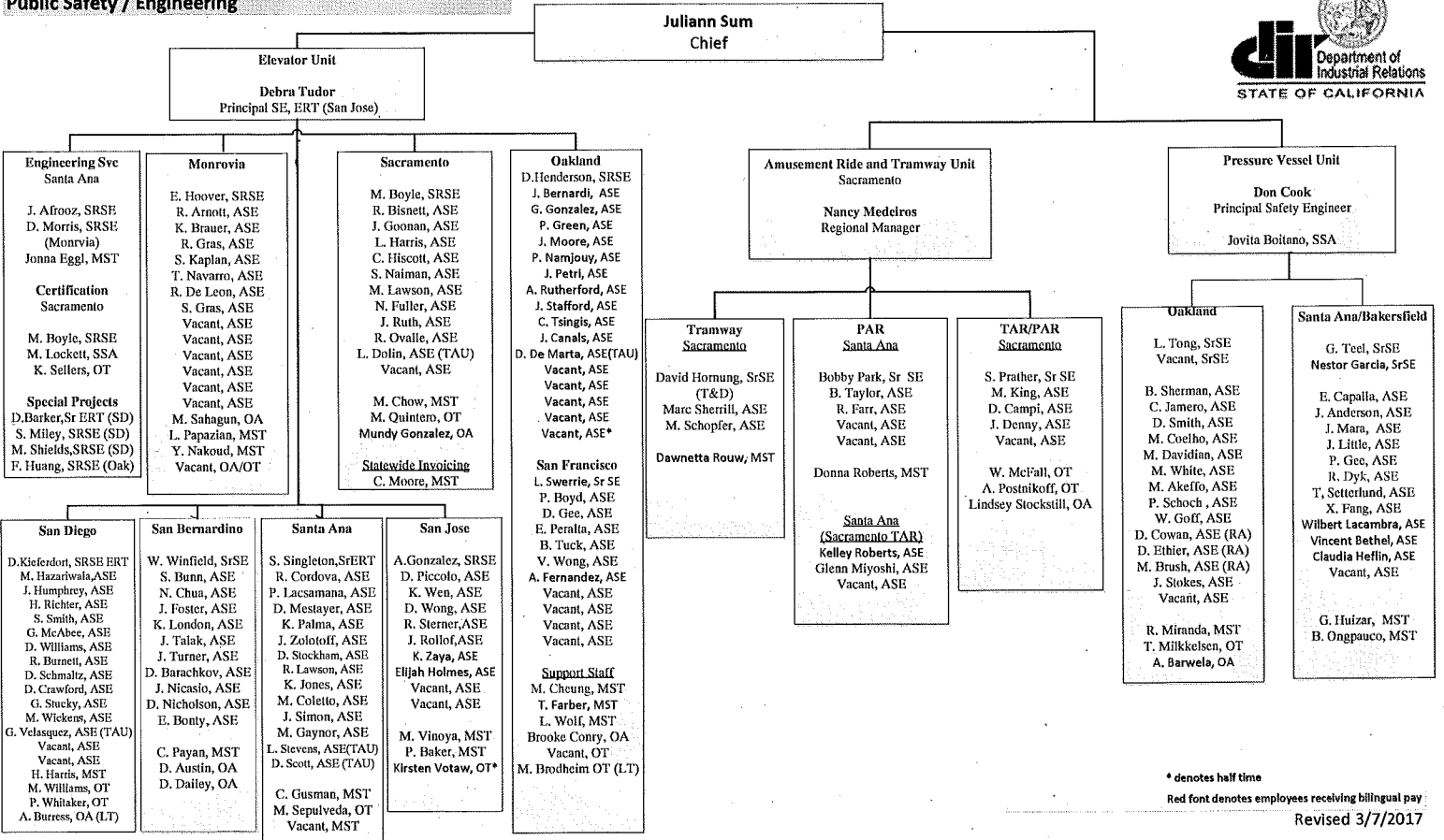
Red font denotes bilingual pay
Revised 3/7/2017

**Division of Occupational Safety and Health
Health, Safety, Medical and Training**



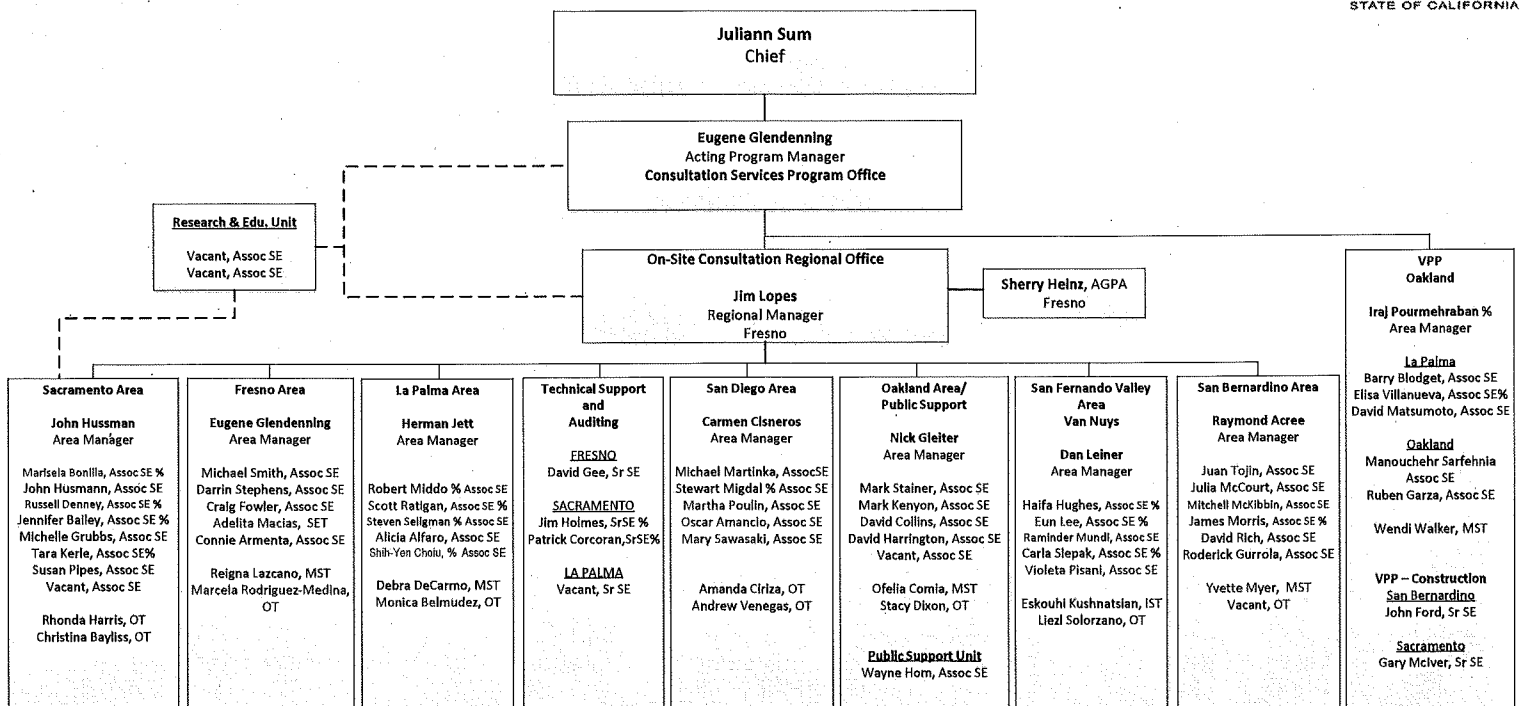
Red font denotes employees receiving bilingual pay
% = formerly IH

**Division of Occupational Safety and Health
Public Safety / Engineering**



* denotes half time
Red font denotes employees receiving bilingual pay
Revised 3/7/2017

**Division of Occupational Safety and Health
Consultation Services Branch**



Red font denotes employees receiving bilingual pay
% = formerly IH

Revised 3/7/2017