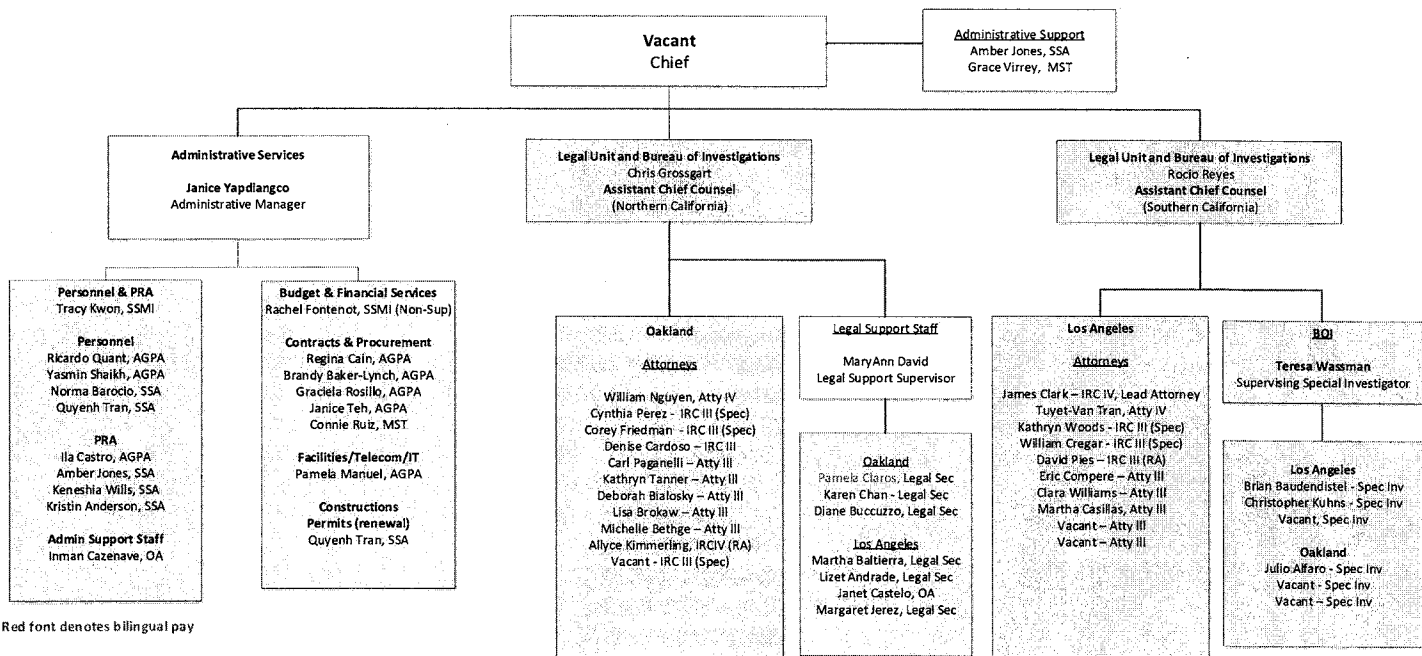


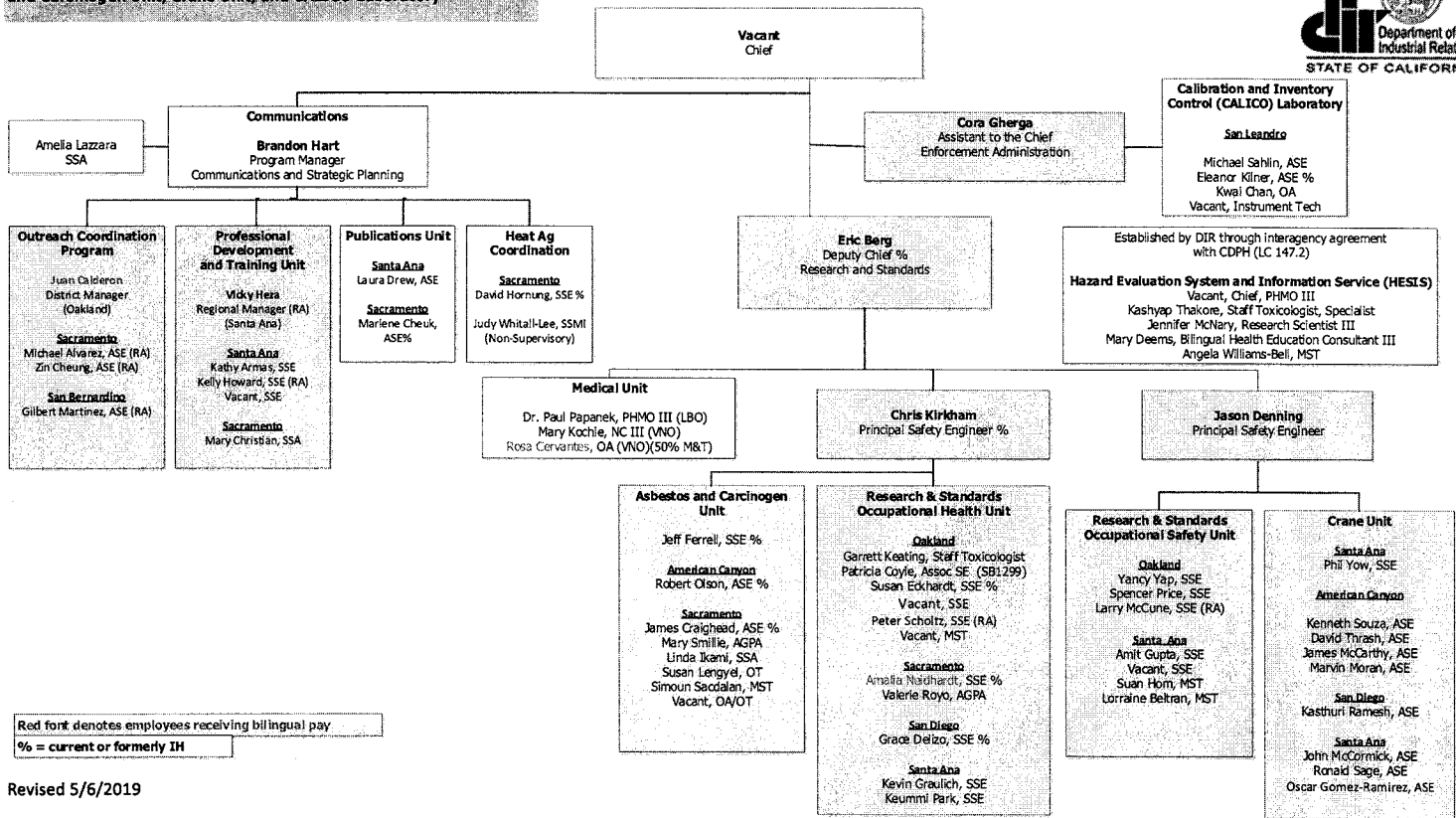
**DIVISION OF OCCUPATIONAL SAFETY AND HEALTH
ADMINISTRATIVE SERVICES, LEGAL UNIT, AND BUREAU OF INVESTIGATIONS**



Red font denotes bilingual pay

Revised 5/6/2019

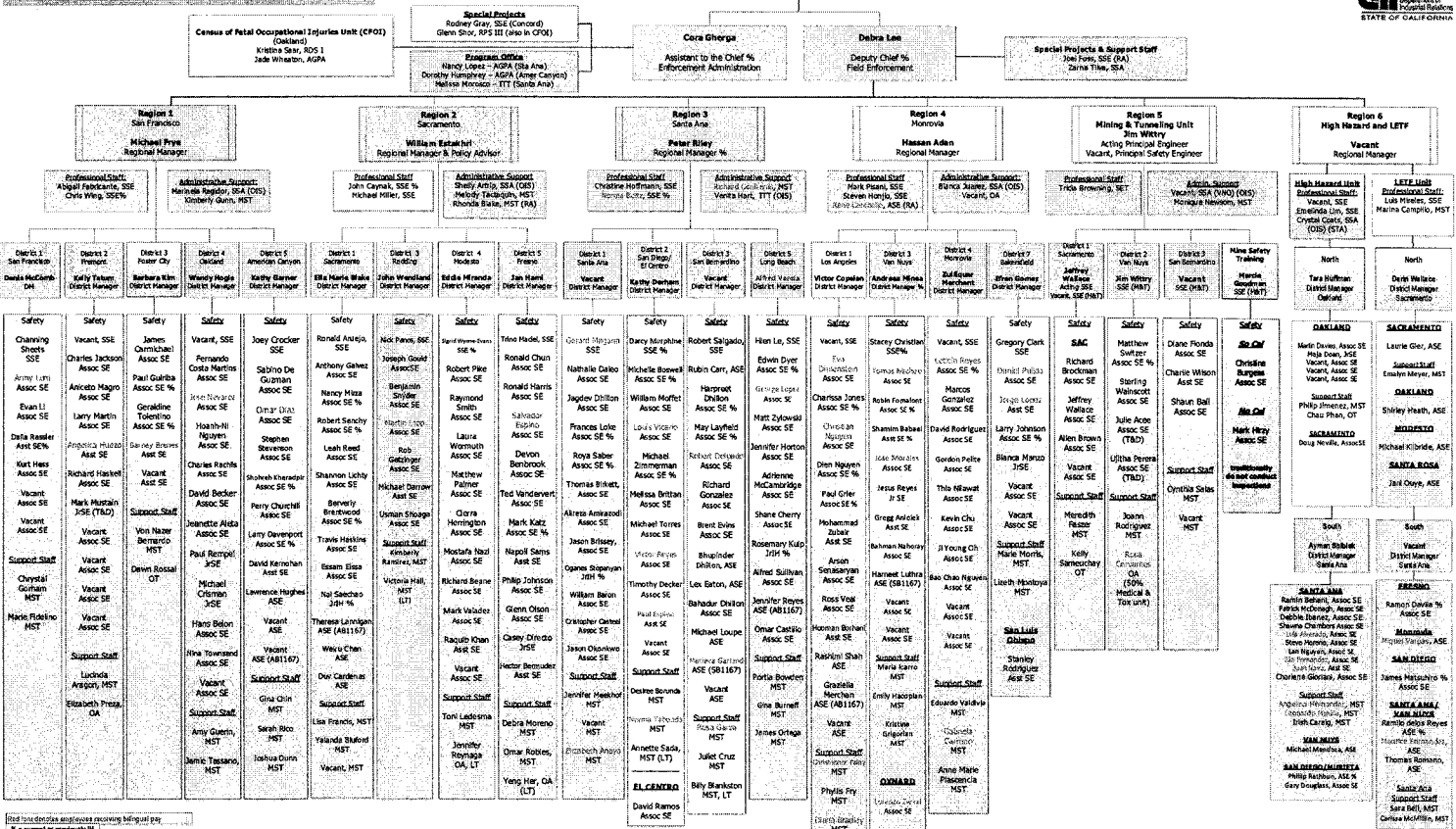
**Division of Occupational Safety and Health
 Communications, Research and Standards, Medical Unit, Asbestos
 and Carcinogen Unit, Crane Unit, and CALICO Laboratory**



Red font denotes employees receiving bilingual pay
 % = current or formerly IH

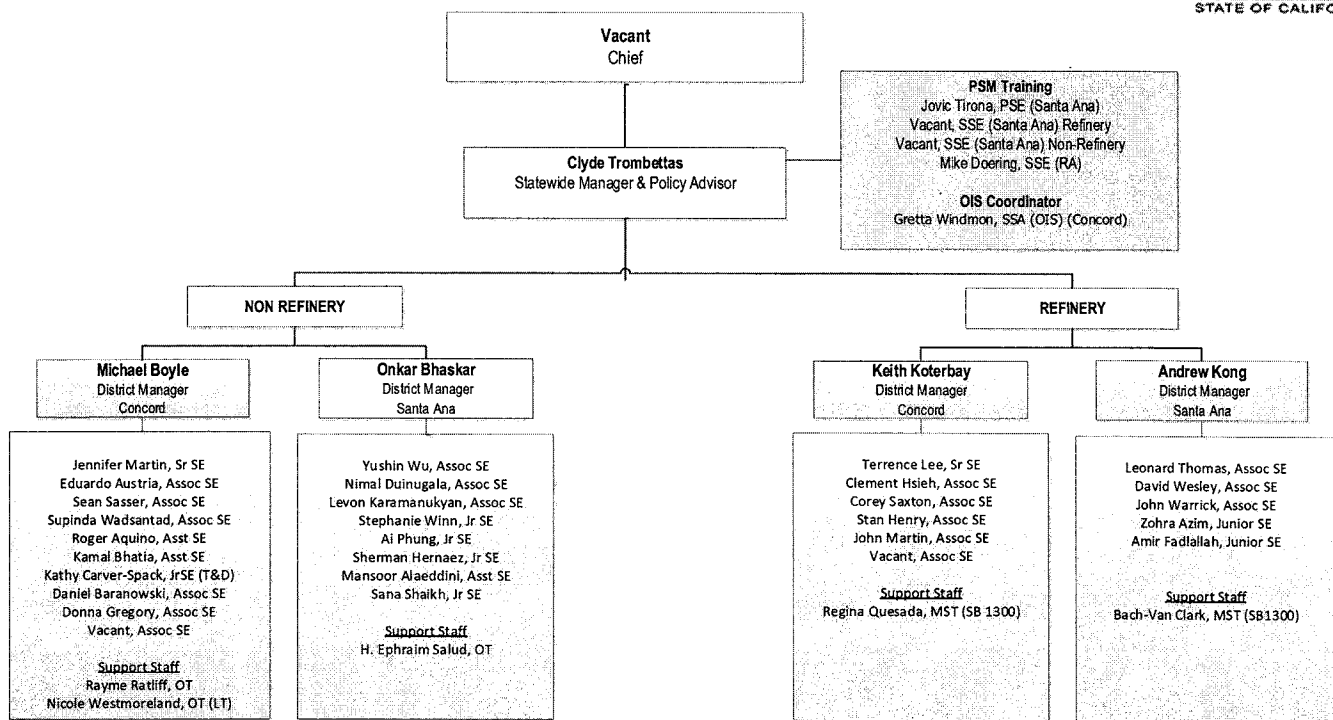
Revised 5/6/2019

**DIVISION OF OCCUPATIONAL SAFETY AND HEALTH
ENFORCEMENT BRANCH**



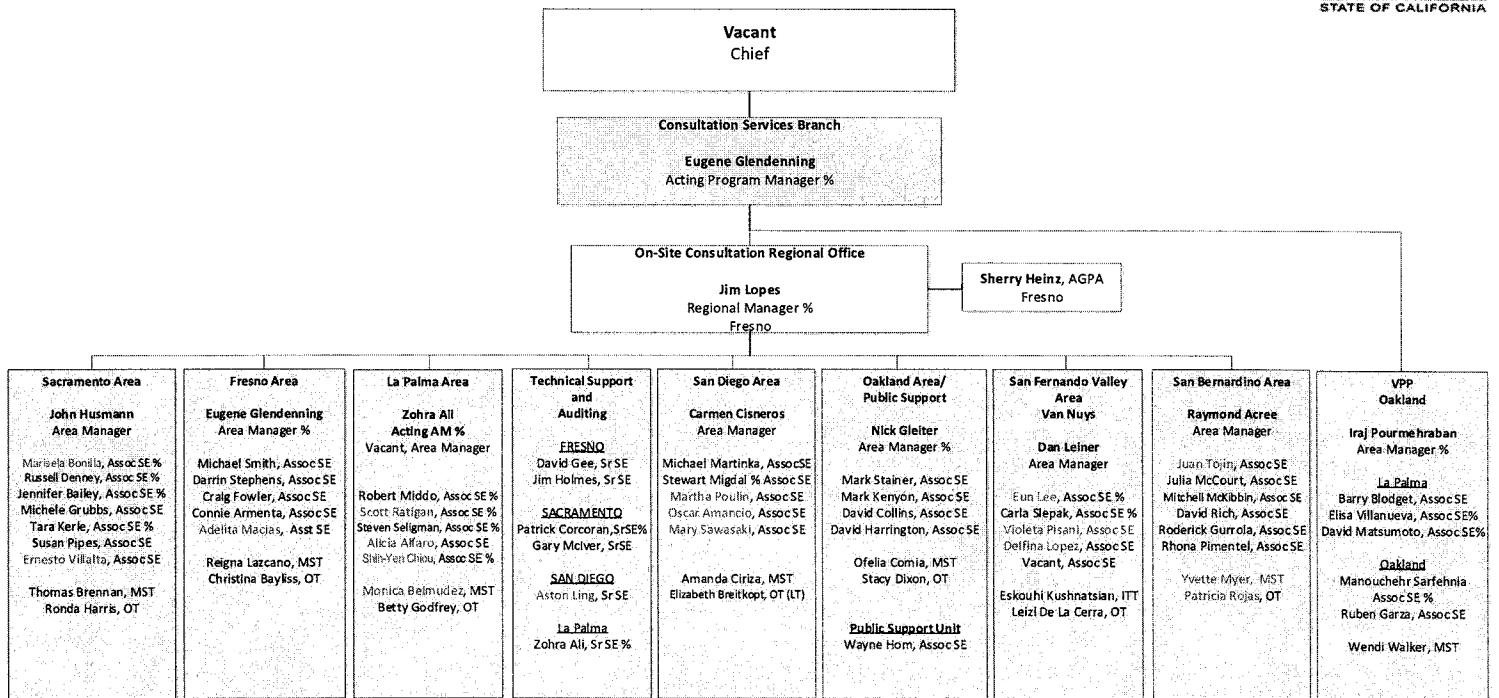
100 - Public Safety Officer; 804 - Regional Manager; 804a - District Manager; 805 - Senior Safety Engineer; 805a - Associate Safety Engineer; 806 - Associate Safety Engineer; 807 - Safety Engineer Technician; 808 - Junior Safety Engineer
 809 - Staff Services Manager; 810 - Associate Environmental Program Analyst; 811 - Staff Services Manager; 812 - Information Systems Tech; 813 - Office Tech; 814 - Office Assistant; 815 - Medical Assistant; 816 - Training and Development; 817 - Temporary Administrative Assistant

**DIVISION OF OCCUPATIONAL SAFETY AND HEALTH
ENFORCEMENT BRANCH - PROCESS SAFETY MANAGEMENT UNIT**



Red font denotes employees receiving bilingual pay

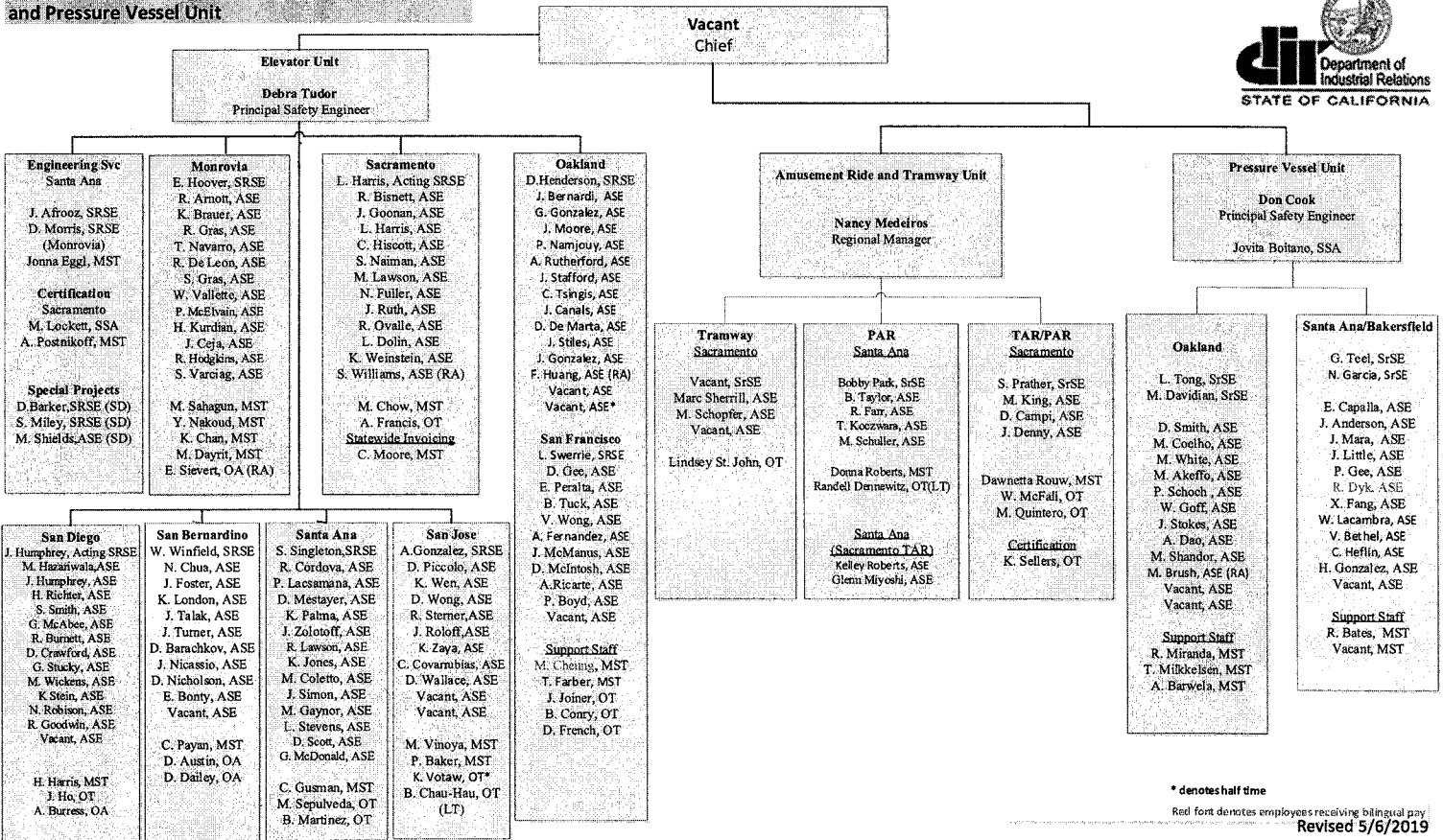
**Division of Occupational Safety and Health
Consultation Services Branch**



Red font denotes employees receiving bilingual pay
% = current or formerly IH

Revised 5/6/2019

**Division of Occupational Safety and Health
Elevator Unit, Amusement Ride and Tramway Unit,
and Pressure Vessel Unit**



* denotes half time
Red font denotes employees receiving bilingual pay
Revised 5/6/2019