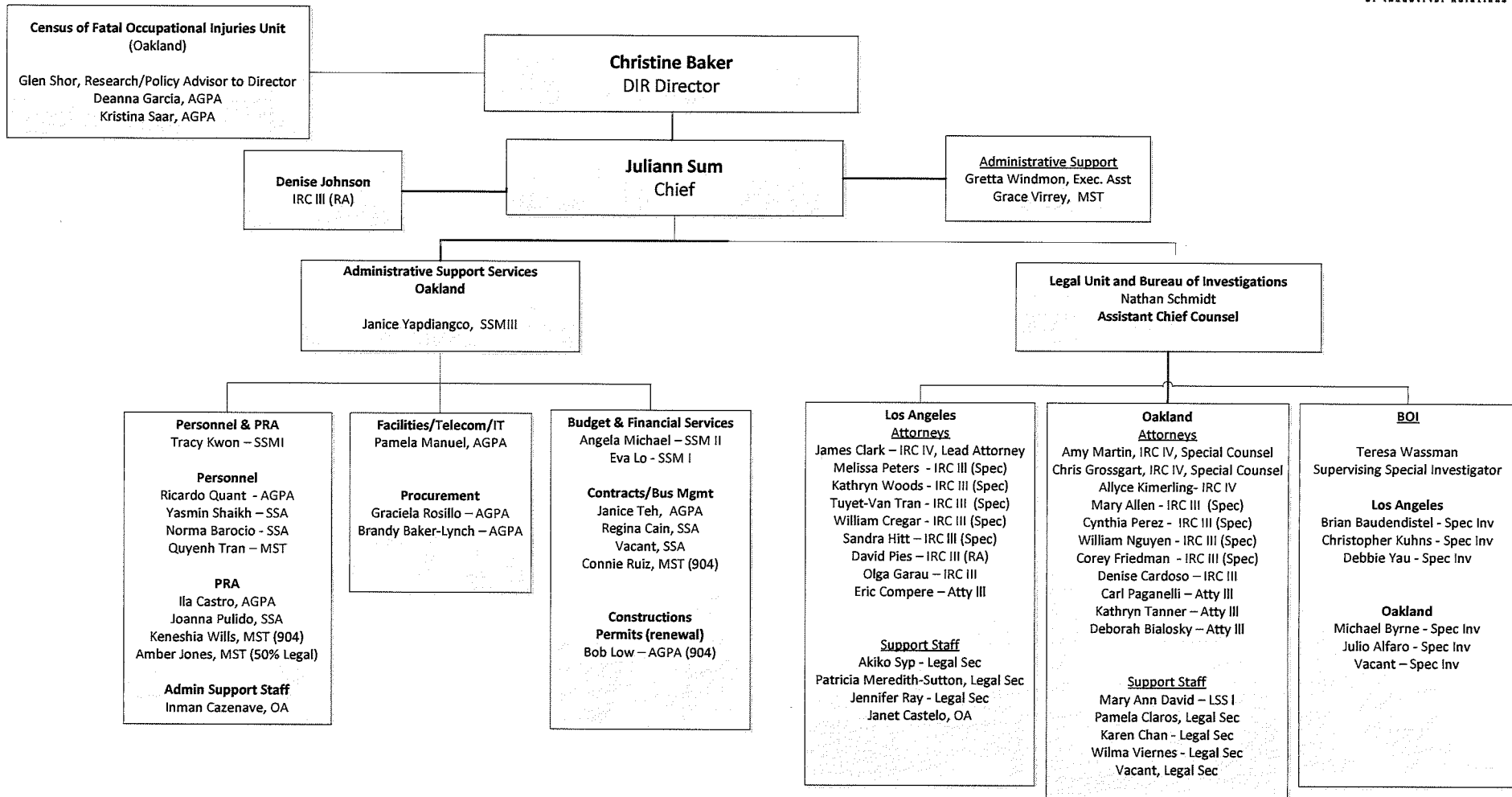
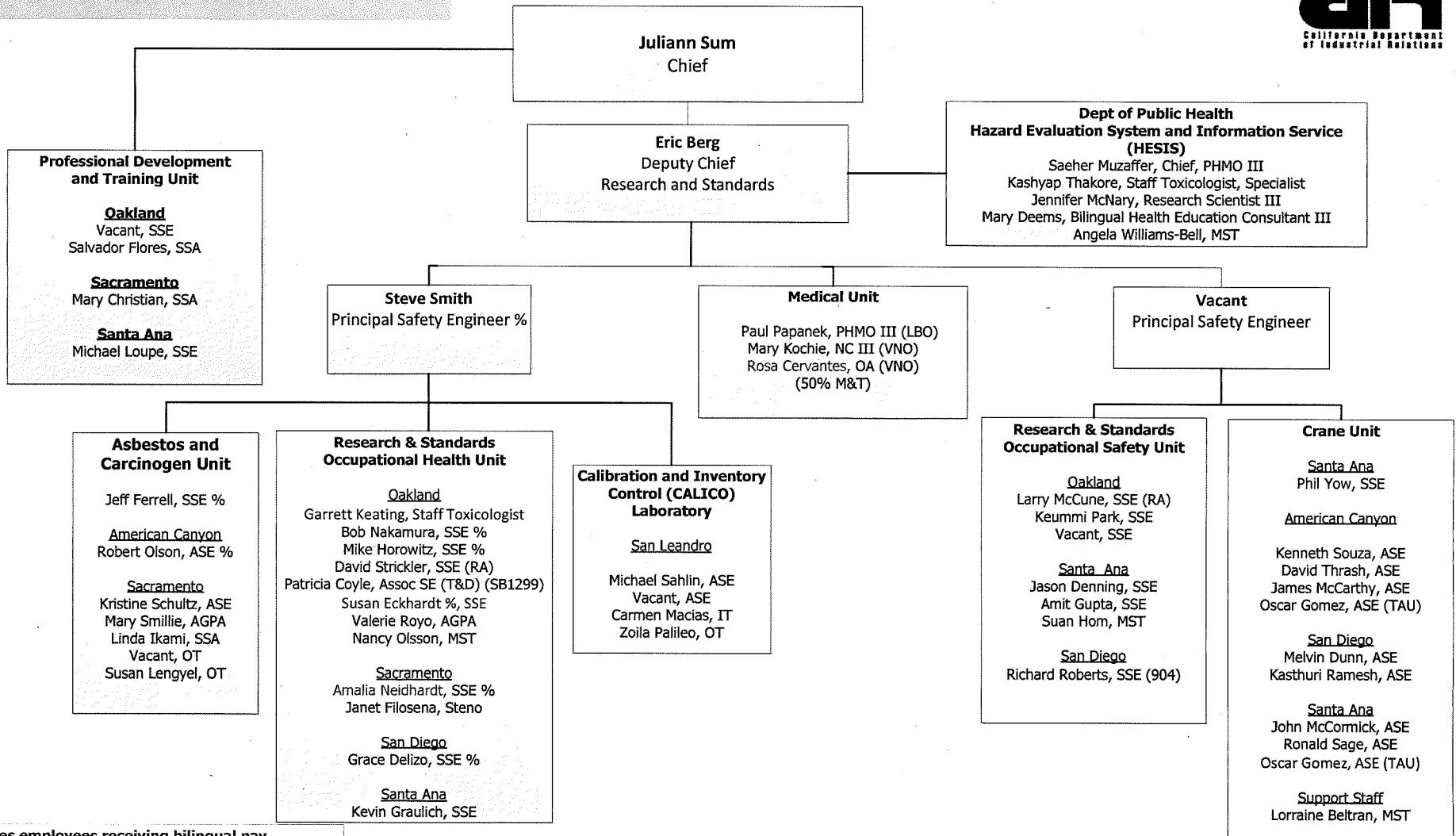


**DIVISION OF OCCUPATIONAL SAFETY AND HEALTH
ADMINISTRATION/LEGAL-BOI**



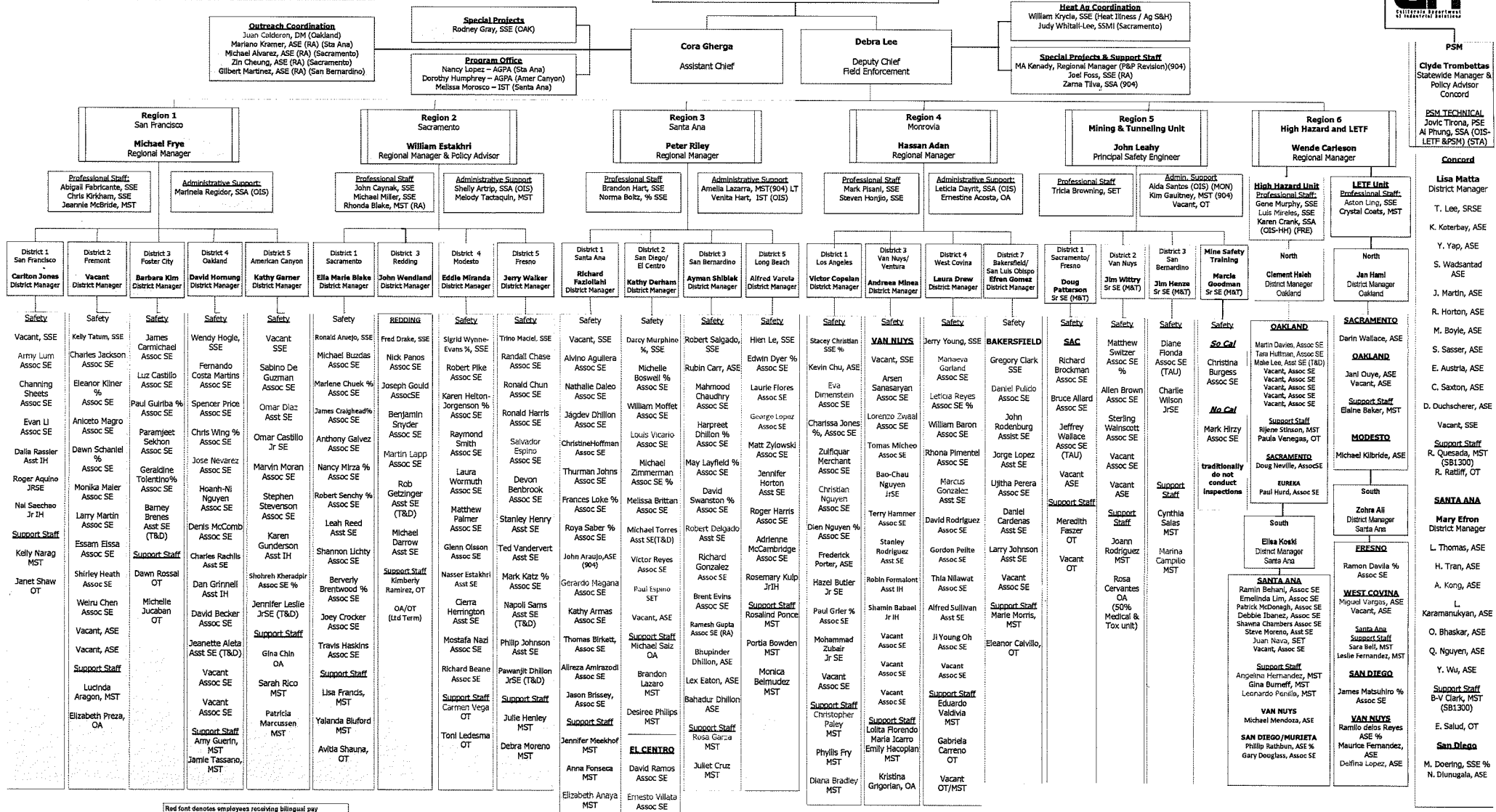
**Division of Occupational Safety and Health
Health, Safety, Medical and Training**



Red font denotes employees receiving bilingual pay

% = formerly IH

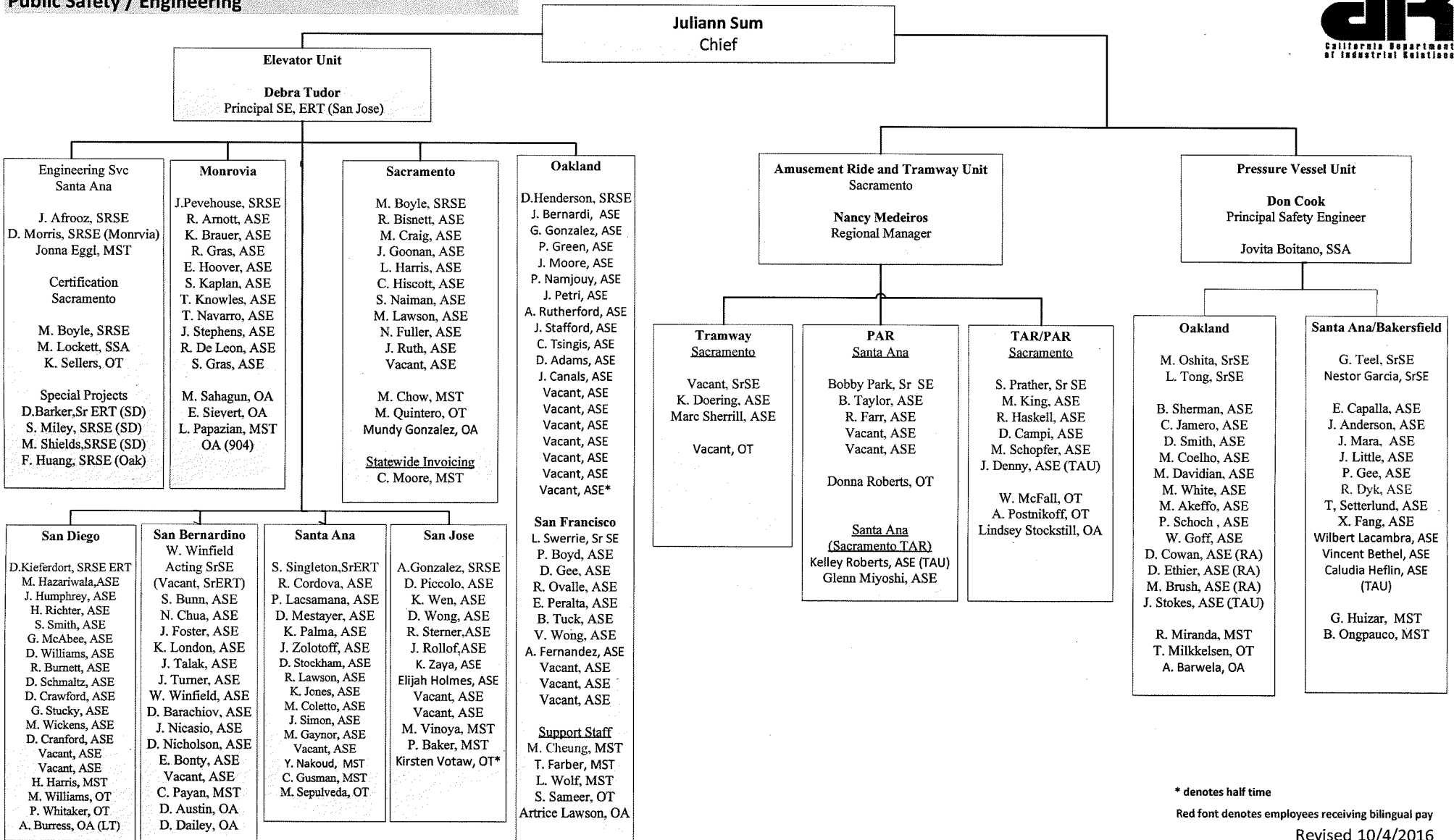
DIVISION OF OCCUPATIONAL SAFETY AND HEALTH ENFORCEMENT BRANCH



Red font denotes employees receiving bilingual pay
% = previously in

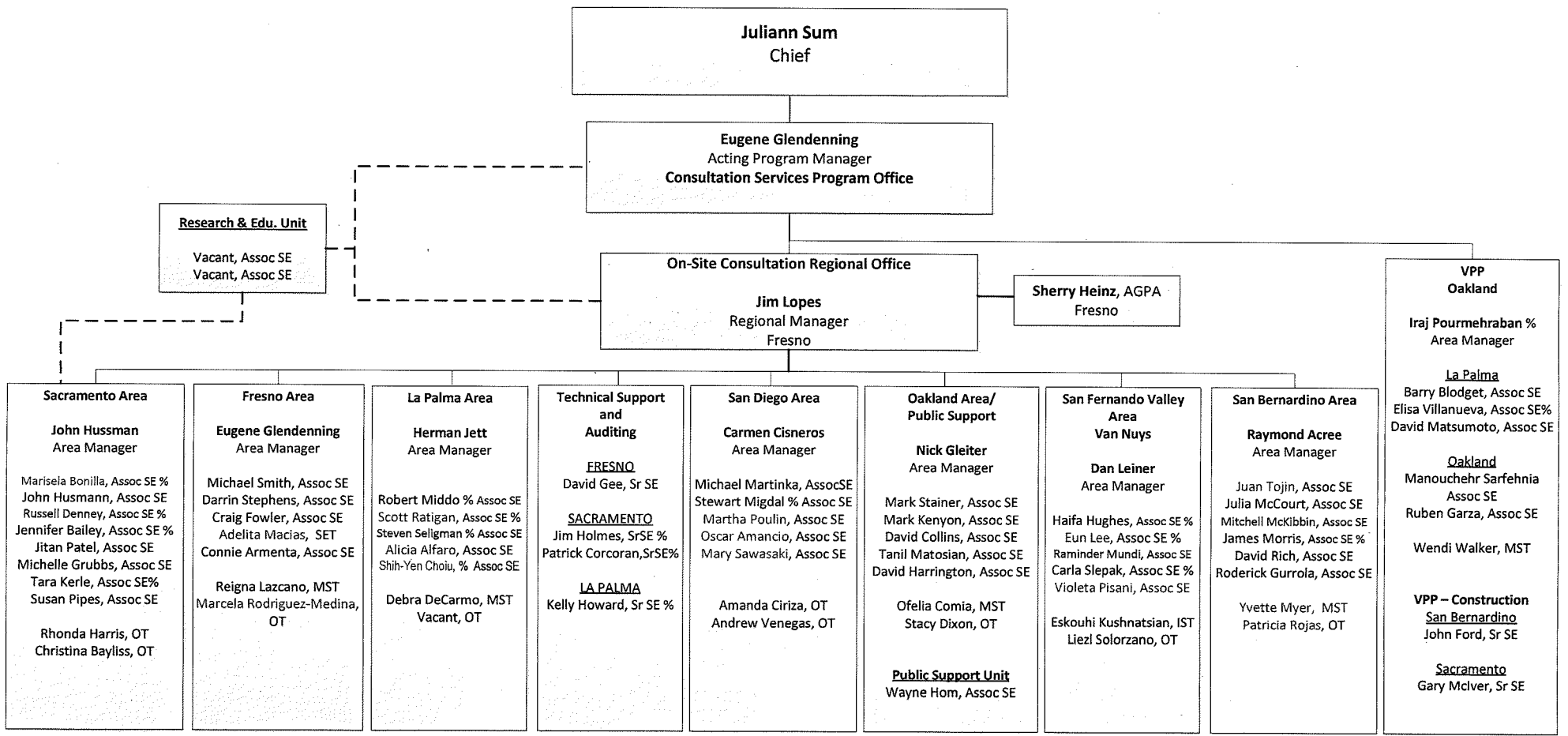
PSL - Principal Safety Engineer; RM - Regional Manager; DM - District Manager; SSE - Senior Safety Engineer; Assoc/ASE - Associate Safety Engineer; Asst/EST - Assistant Safety Engineer; SET - Safety Engineer/Technician; JSE - Junior Safety Engineer; SSM - Staff Services Manager; AGPA - Associate Governmental Program Analyst; SSA - Staff Services Analyst; MST - Management Services Tech; IST - Information System Tech; OT - Office Tech; OA - Office Assistant; RA - Retired Annular; T&D - Training and Development; TAU - Temporary Authorization Appointment

**Division of Occupational Safety and Health
Public Safety / Engineering**



* denotes half time
Red font denotes employees receiving bilingual pay

**Division of Occupational Safety and Health
Consultation Services Branch**



Red font denotes employees receiving bilingual pay
% = formerly IH