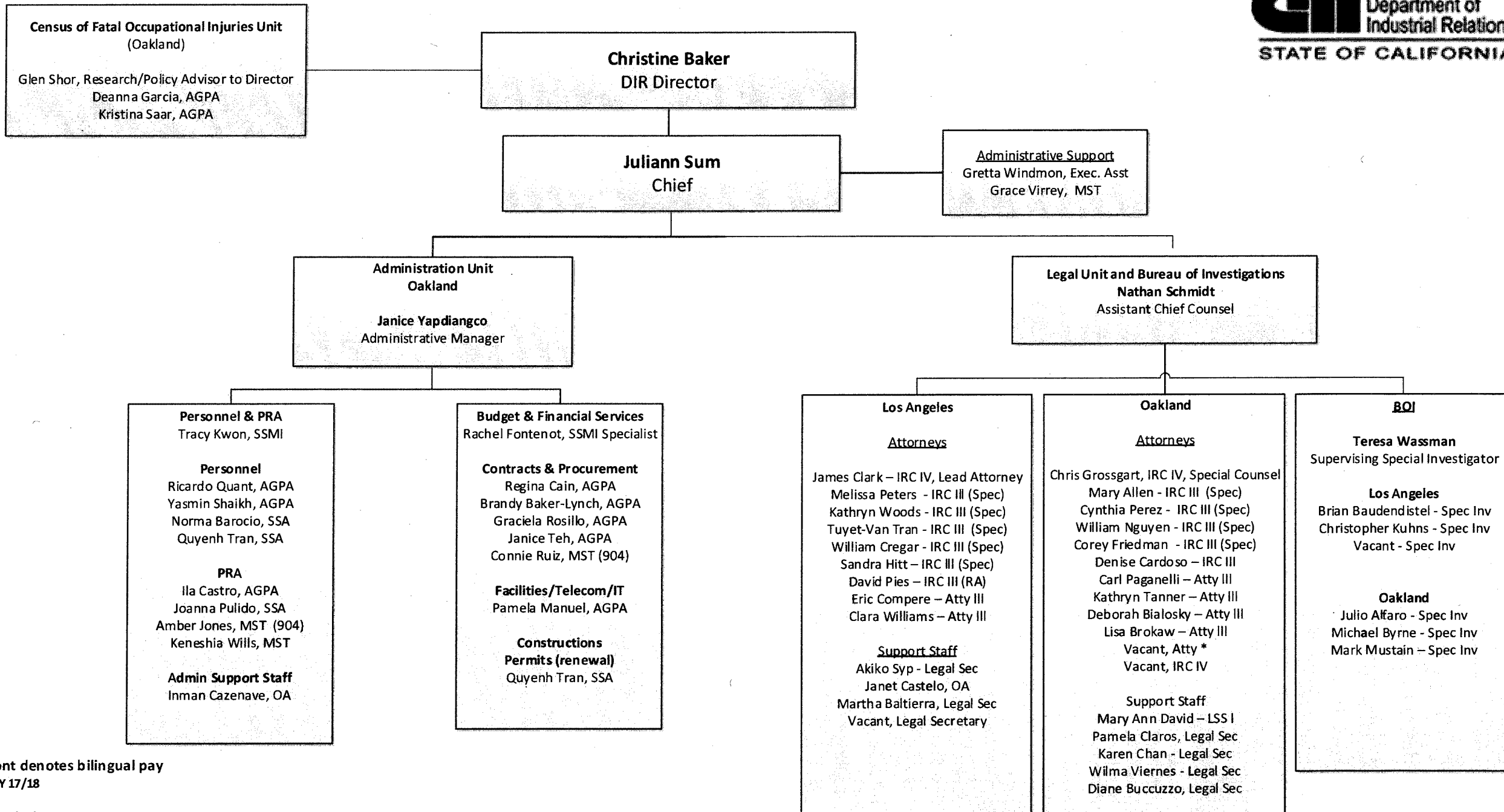
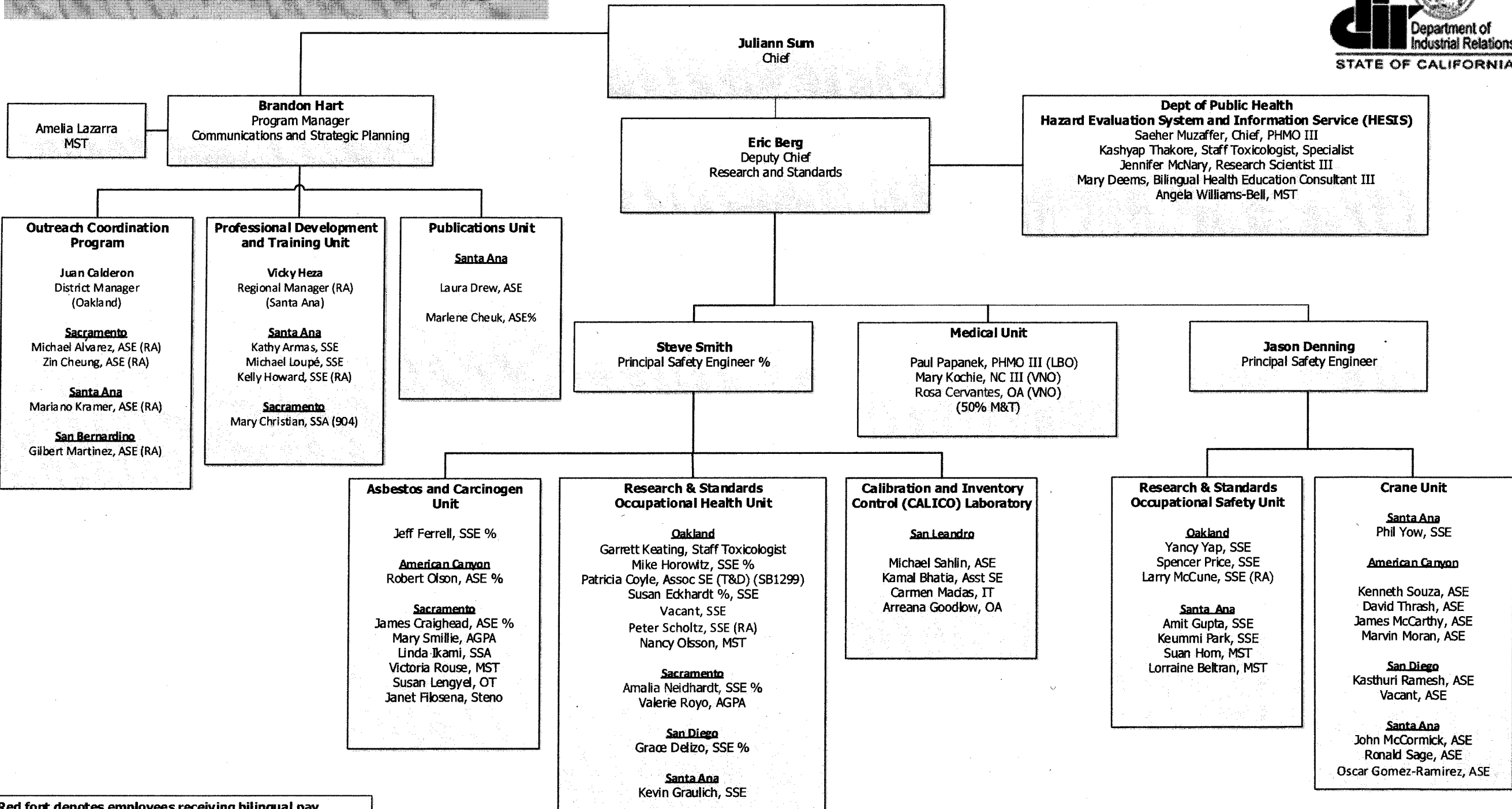


**DIVISION OF OCCUPATIONAL SAFETY AND HEALTH  
ADMINISTRATION/LEGAL-BOI**



Red font denotes bilingual pay

\*BCP FY 17/18



Red font denotes employees receiving bilingual pay  
% = formerly IH

**DIVISION OF OCCUPATIONAL SAFETY AND HEALTH  
ENFORCEMENT BRANCH**



**Juliann Sum**  
Chief

**Special Projects**  
Rodney Gray, SSE (OAK)

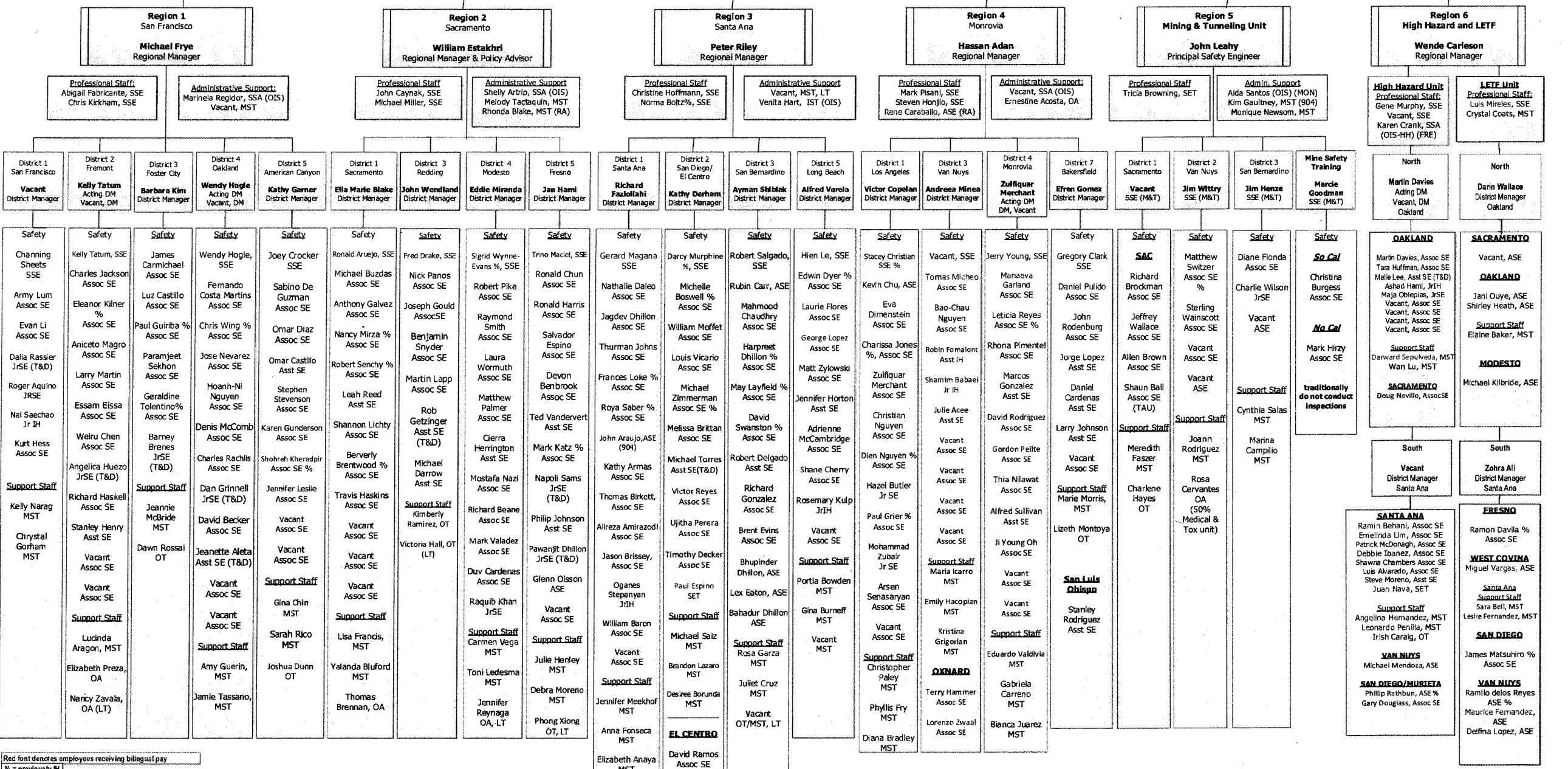
**Program Office**  
Nancy Lopez – AGPA (Sta Ana)  
Dorothy Humphrey – AGPA (Amer Canyon)  
Melissa Moroso – MST (Santa Ana)

**Cora Gherga**  
Assistant Chief  
Enforcement Administration

**Debra Lee**  
Deputy Chief  
Field Enforcement

**Heat Ag Coordination**  
William Kryca, SSE (Heat Illness / Ag S&H)  
Judy Whitall-Lee, SSMI (Sacramento)

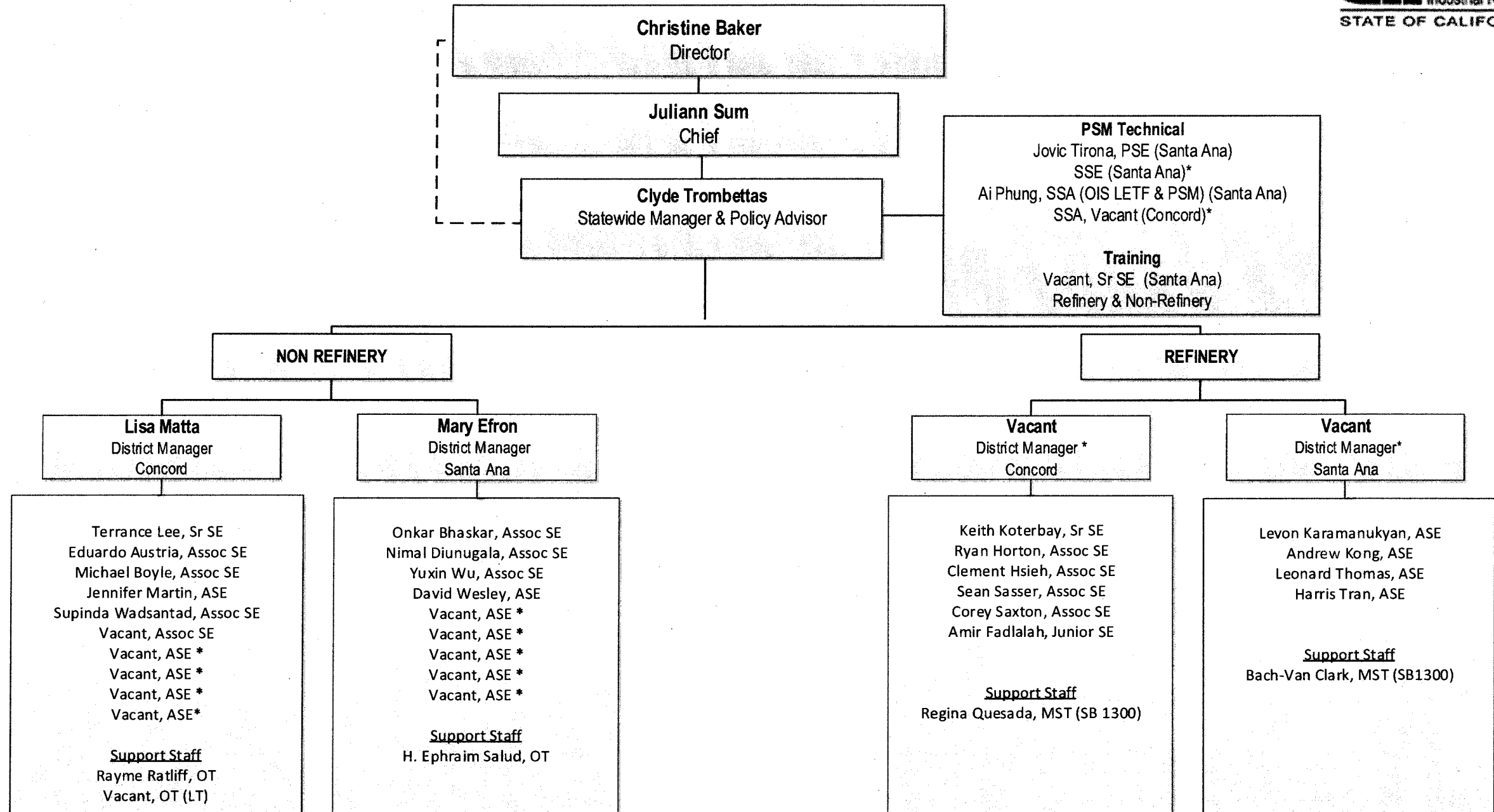
**Special Projects & Support Staff**  
Joel Foss, SSE (RA)  
Zarna Tilva, SSA (904)



Red font denotes employees receiving bilingual pay  
% = previously in

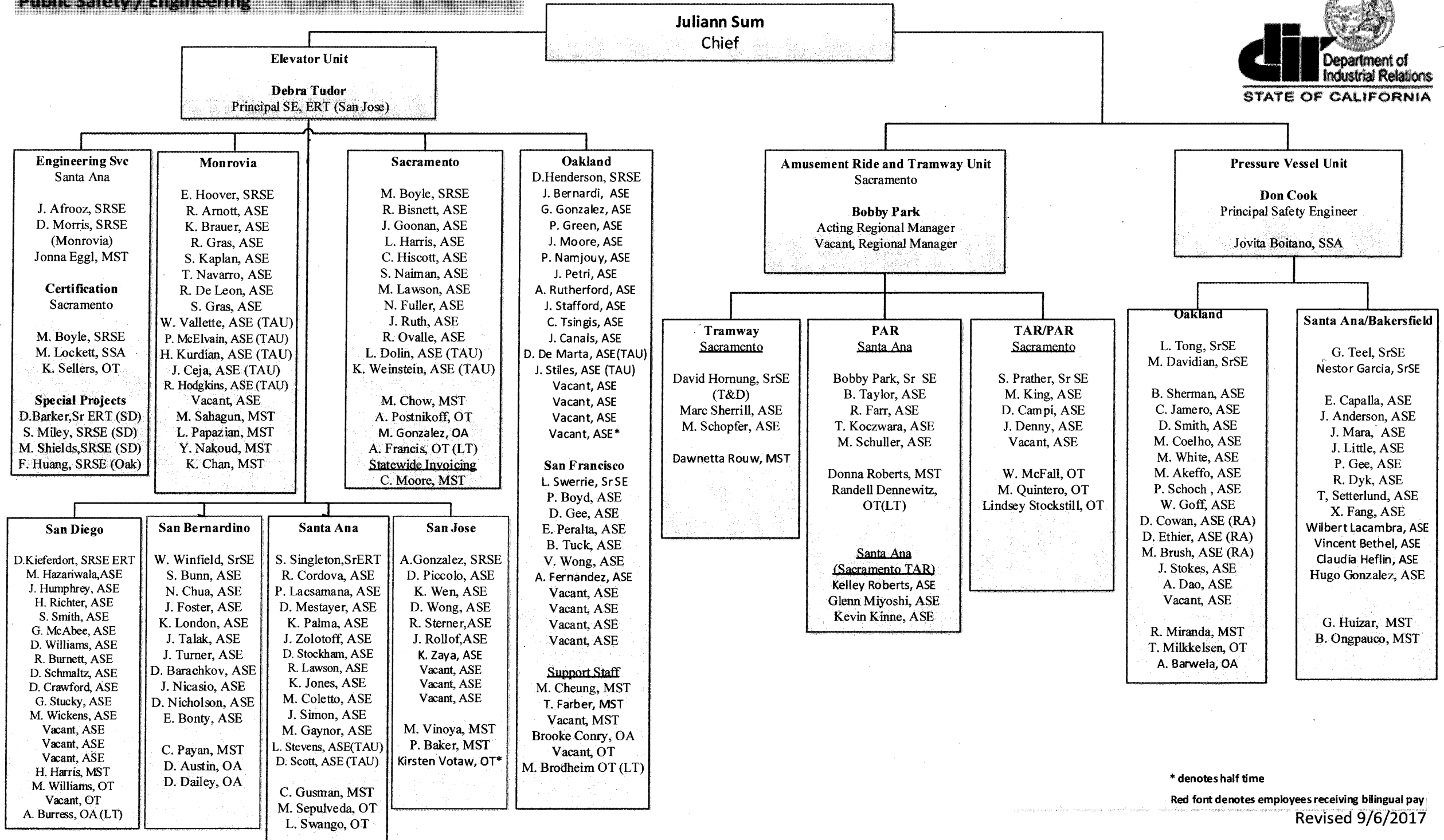
PSE - Principal Safety Engineer; RM - Regional Manager; DM - District Manager; SSE - Senior Safety Engineer; AssocSSE/ASE - Associate Safety Engineer; AsstSSE - Assistant Safety Engineer; SET - Safety Engineer Technician; JRSE - Junior Safety Engineer  
SSM - Staff Services Manager; AGPA - Associate Governmental Program Analyst; SSA - Staff Services Analyst; MST - Management Services Tech; IST - Information System Tech; OT - Office Tech; OA - Office Assistant; RA - Retired Annuitant; T&D - Training and Development; TAU - Temporary Authorization Appointment

**DIVISION OF OCCUPATIONAL SAFETY AND HEALTH  
ENFORCEMENT BRANCH - PROCESS SAFETY MANAGEMENT (PSM) UNIT**



Red font denotes employees receiving bilingual pay

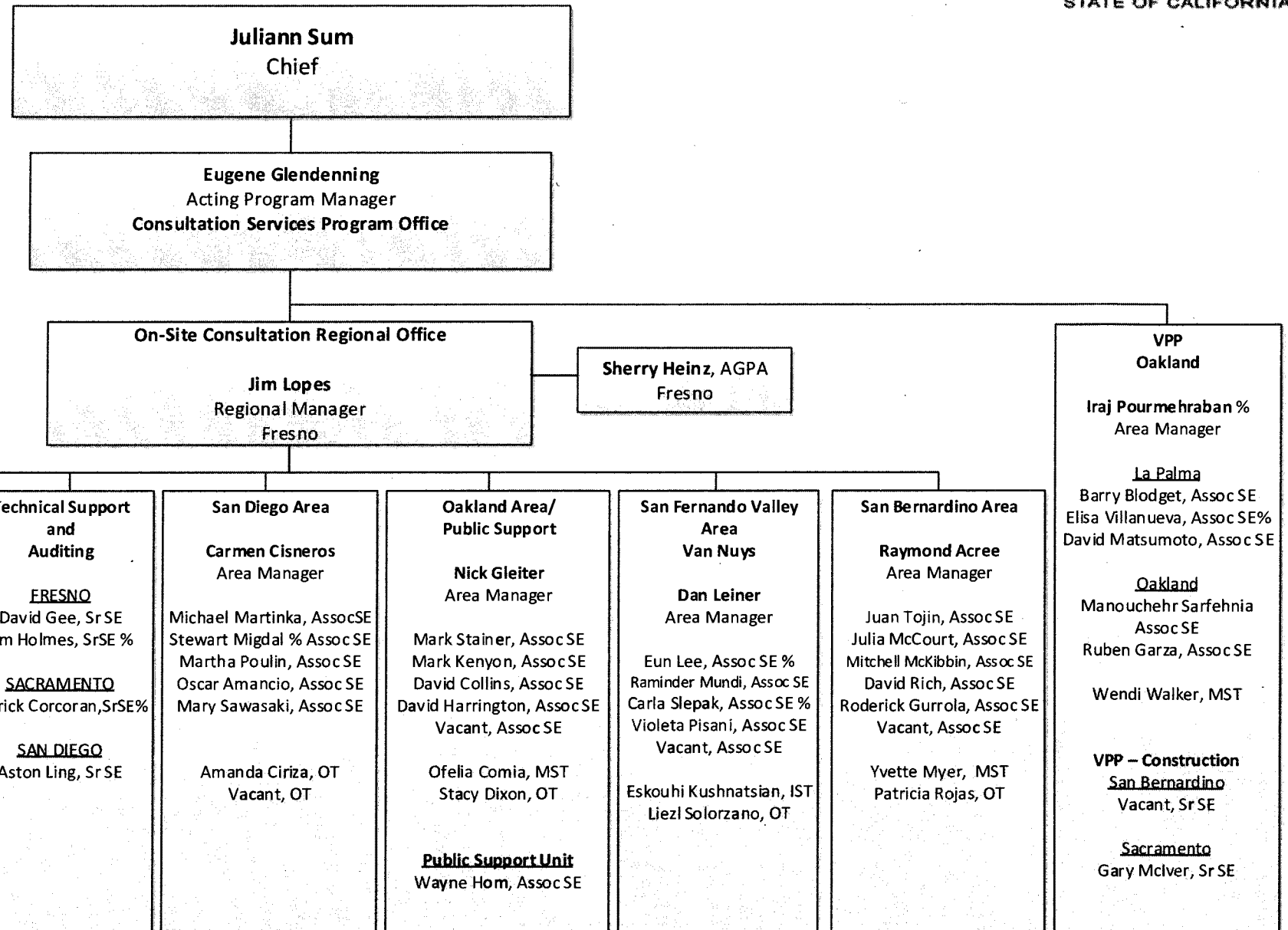
\* New BCP Positions FY17/18



\* denotes half time

Red font denotes employees receiving bilingual pay

Revised 9/6/2017



Red font denotes employees receiving bilingual pay

% = formerly IH