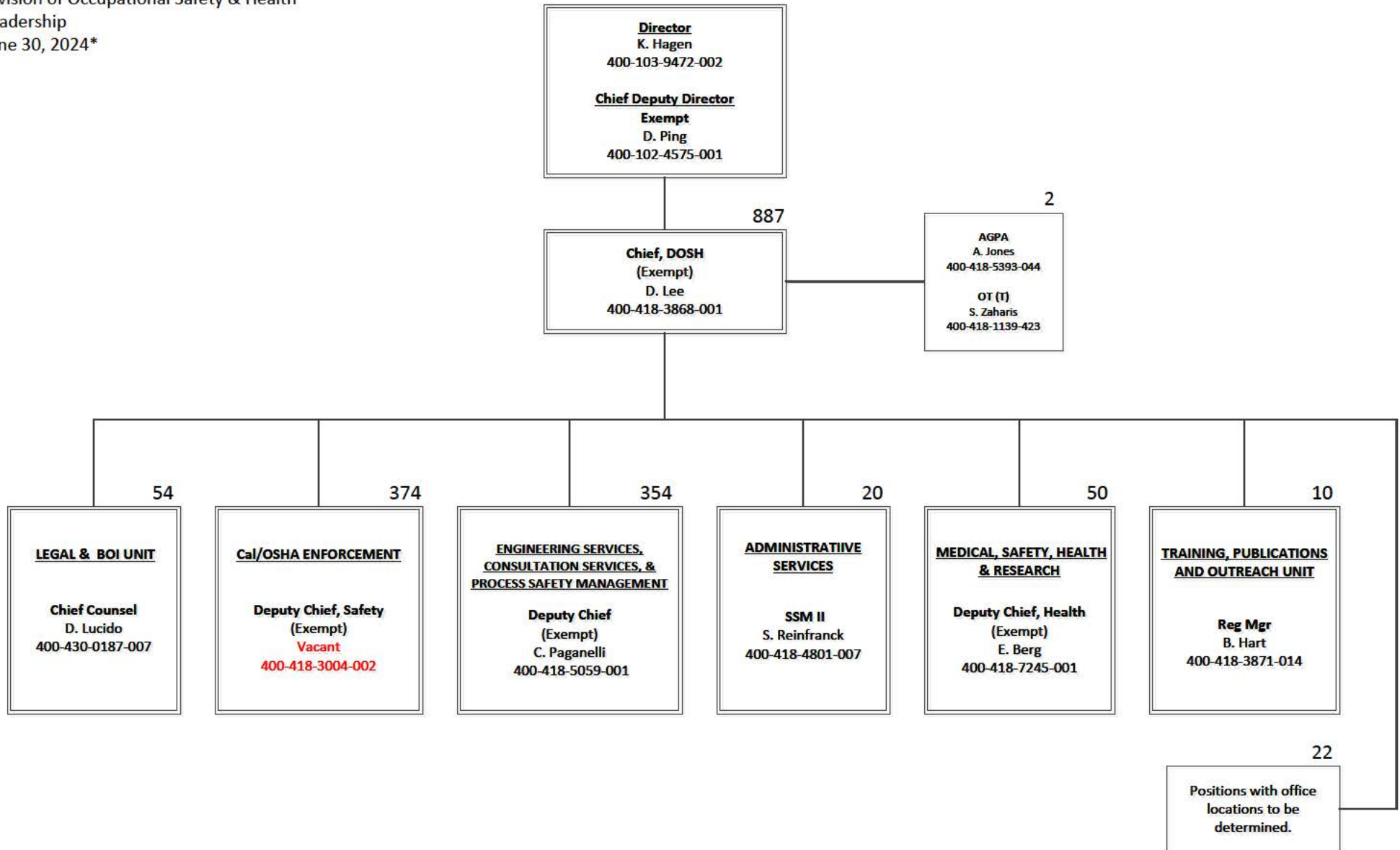
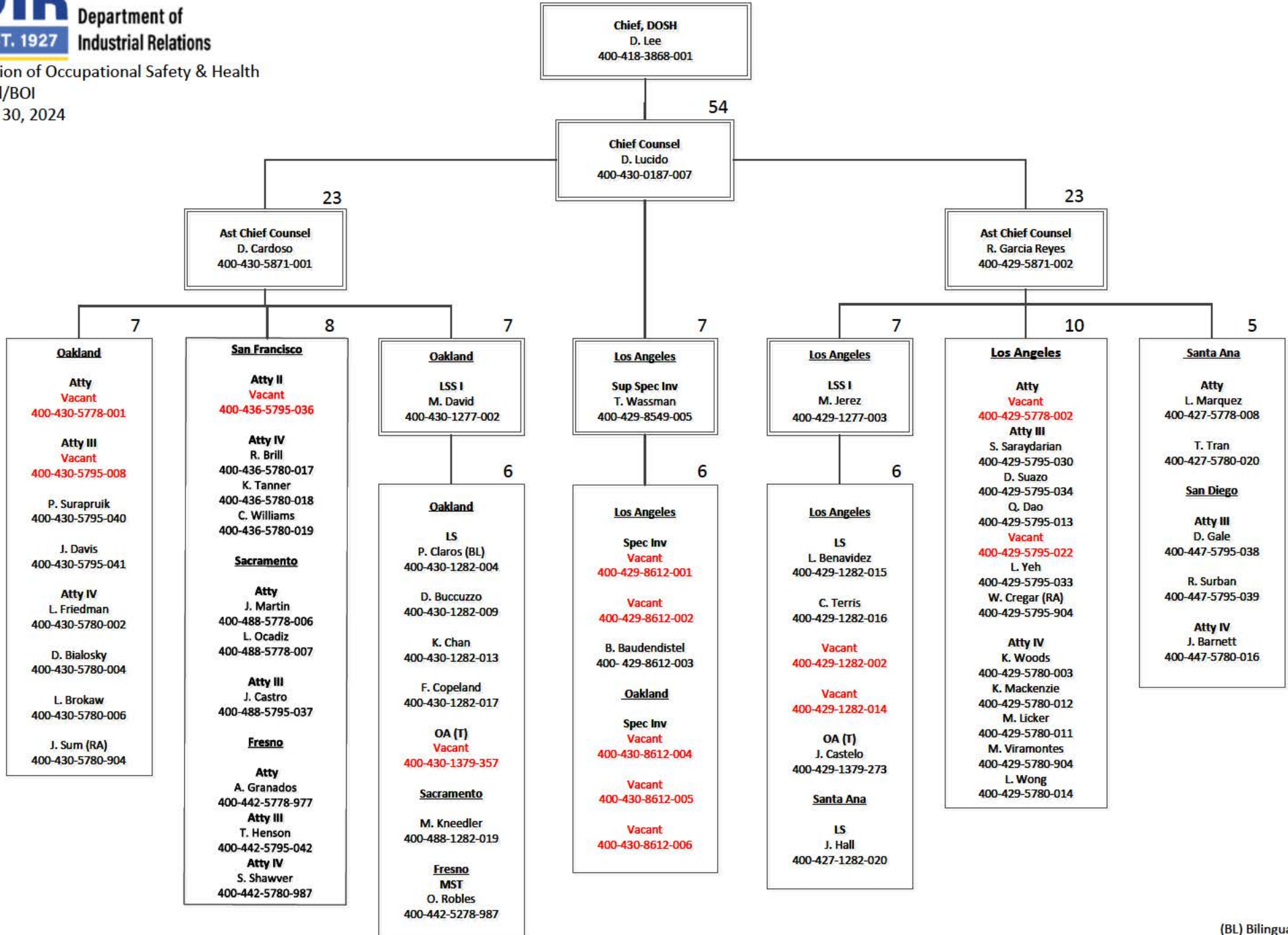


Division of Occupational Safety & Health
 Leadership
 June 30, 2024*

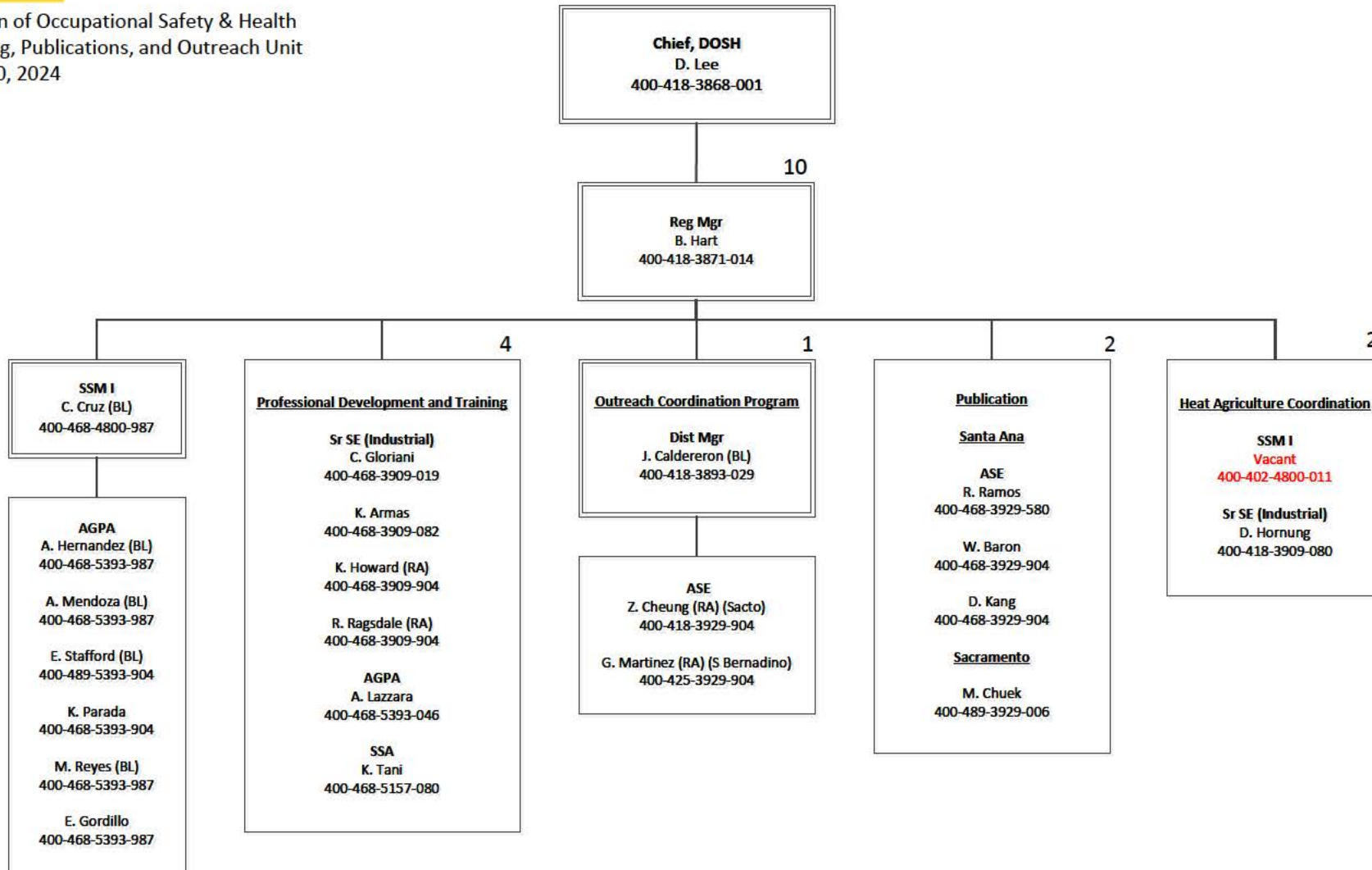


*Reflects changes in SCO/Salesforce as of close of business 5/31/24

Division of Occupational Safety & Health
 Legal/BOI
 June 30, 2024

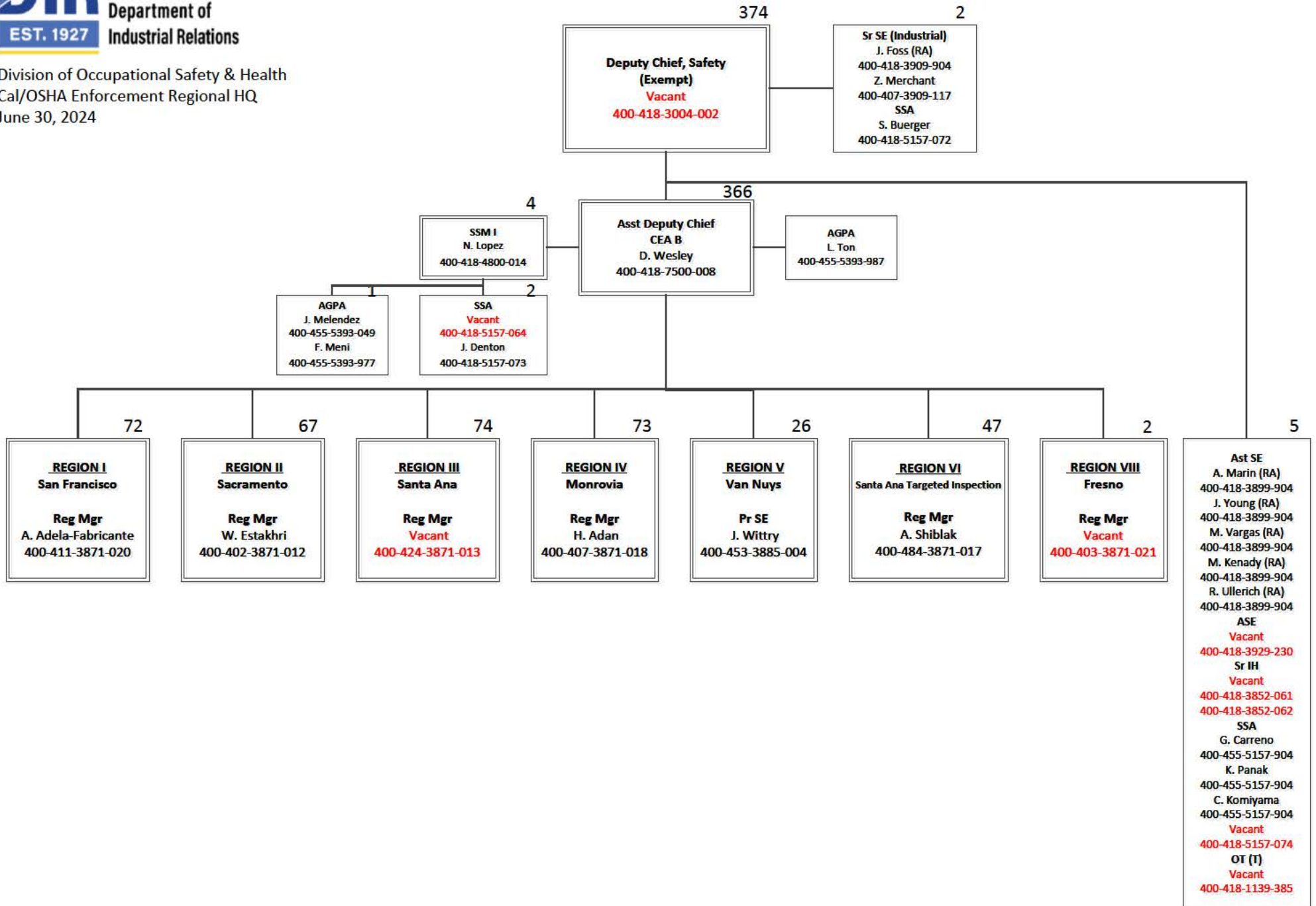


Division of Occupational Safety & Health
 Training, Publications, and Outreach Unit
 June 30, 2024

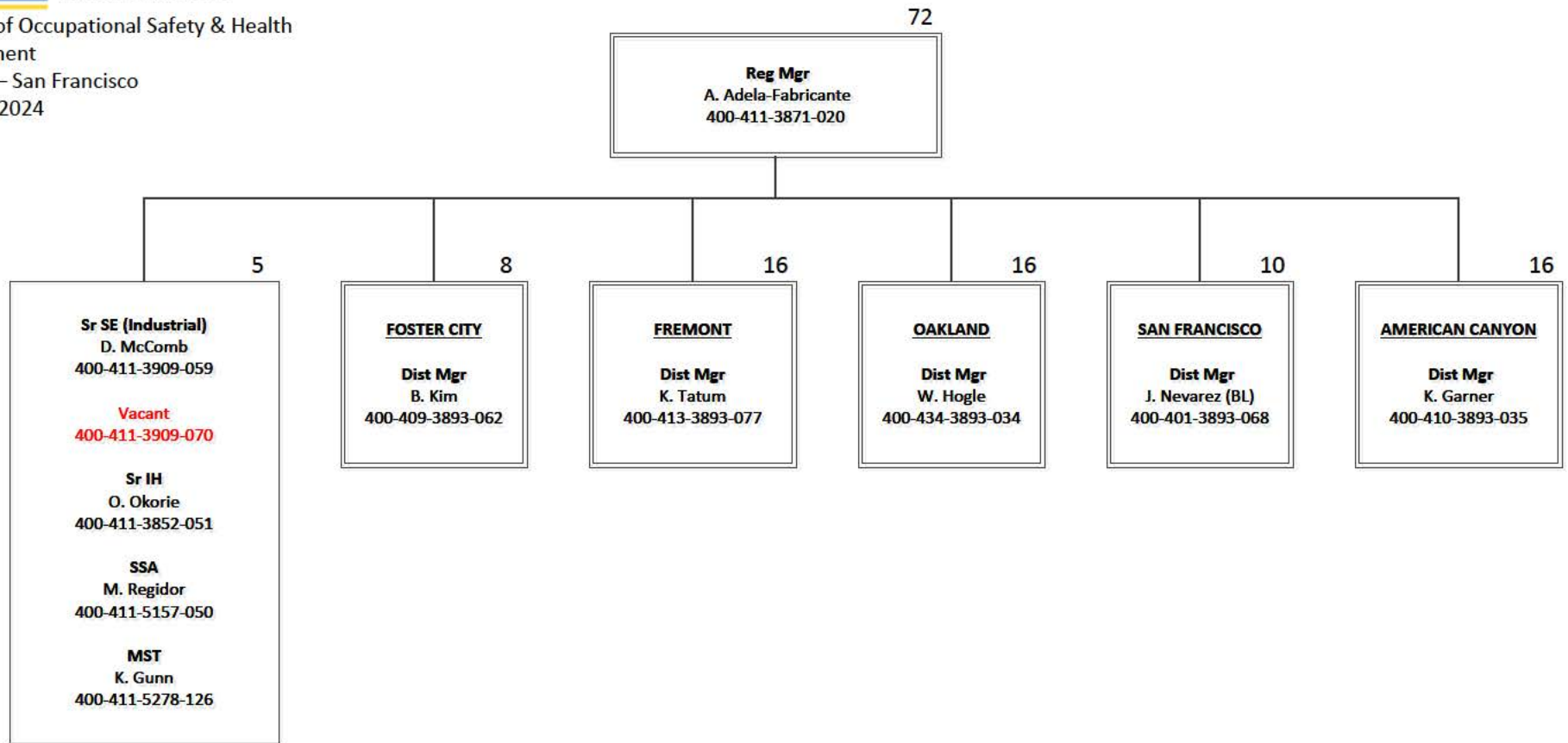


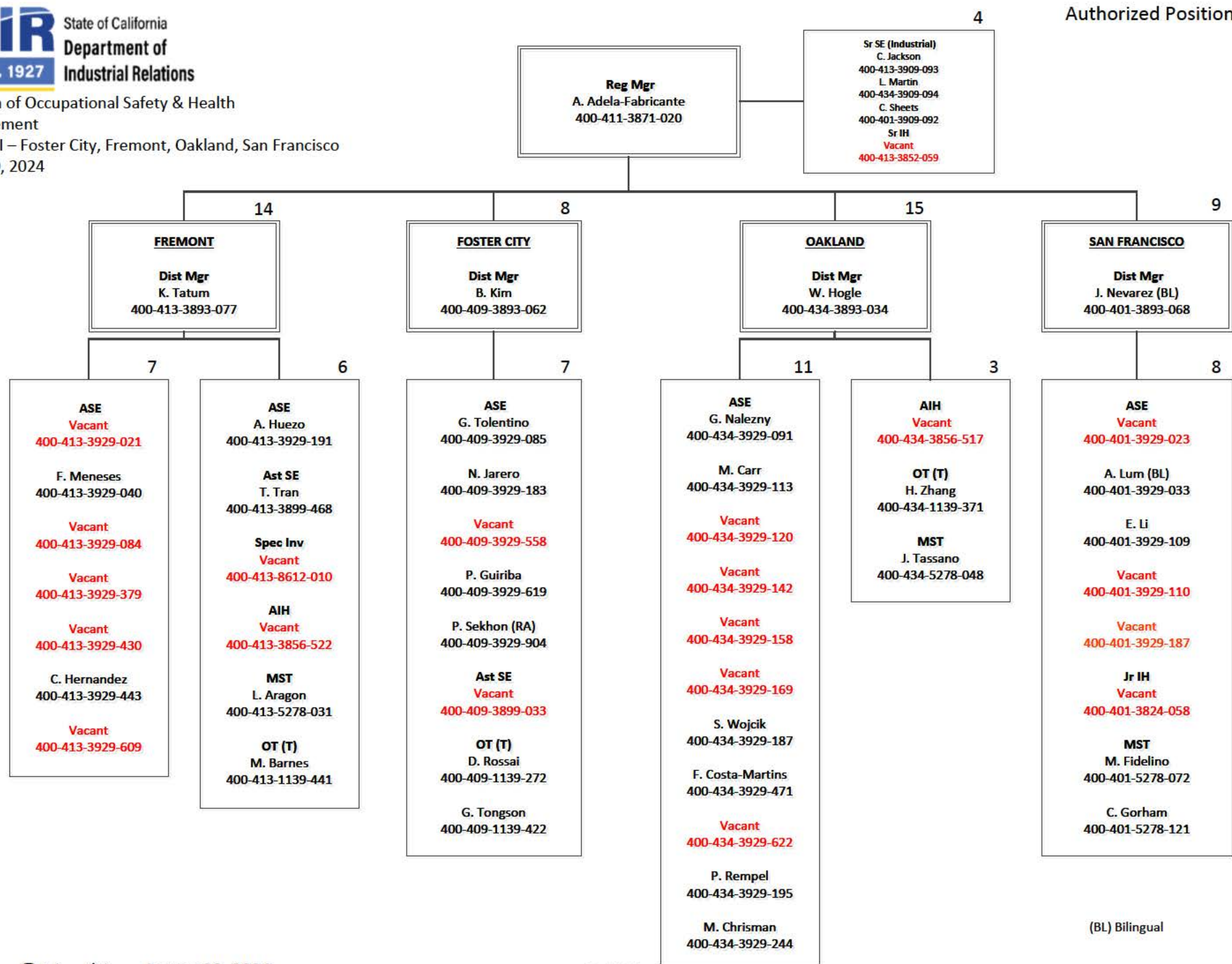
(BL) Bilingual

Division of Occupational Safety & Health
 Cal/OSHA Enforcement Regional HQ
 June 30, 2024



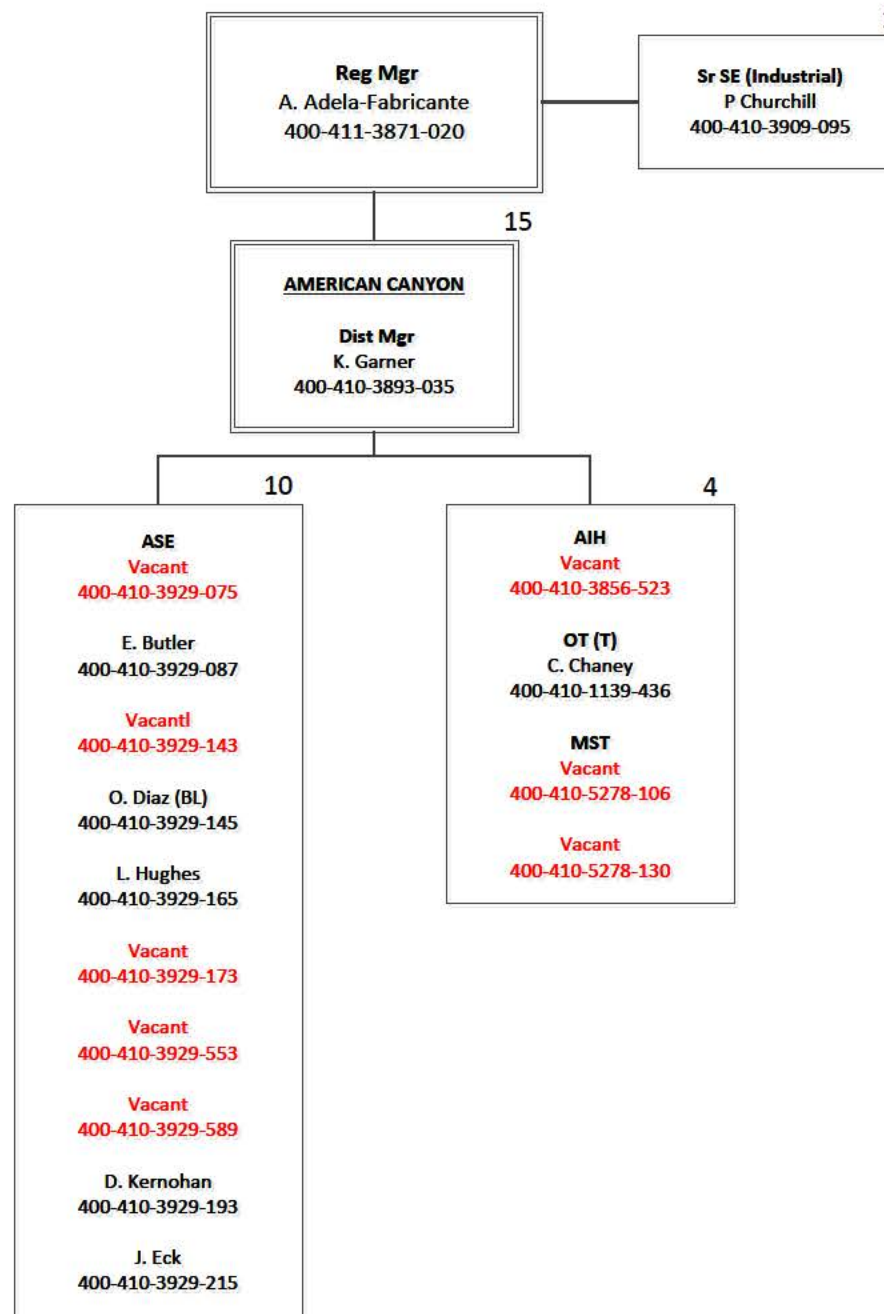
Division of Occupational Safety & Health
 Enforcement
 Region I – San Francisco
 June 30, 2024



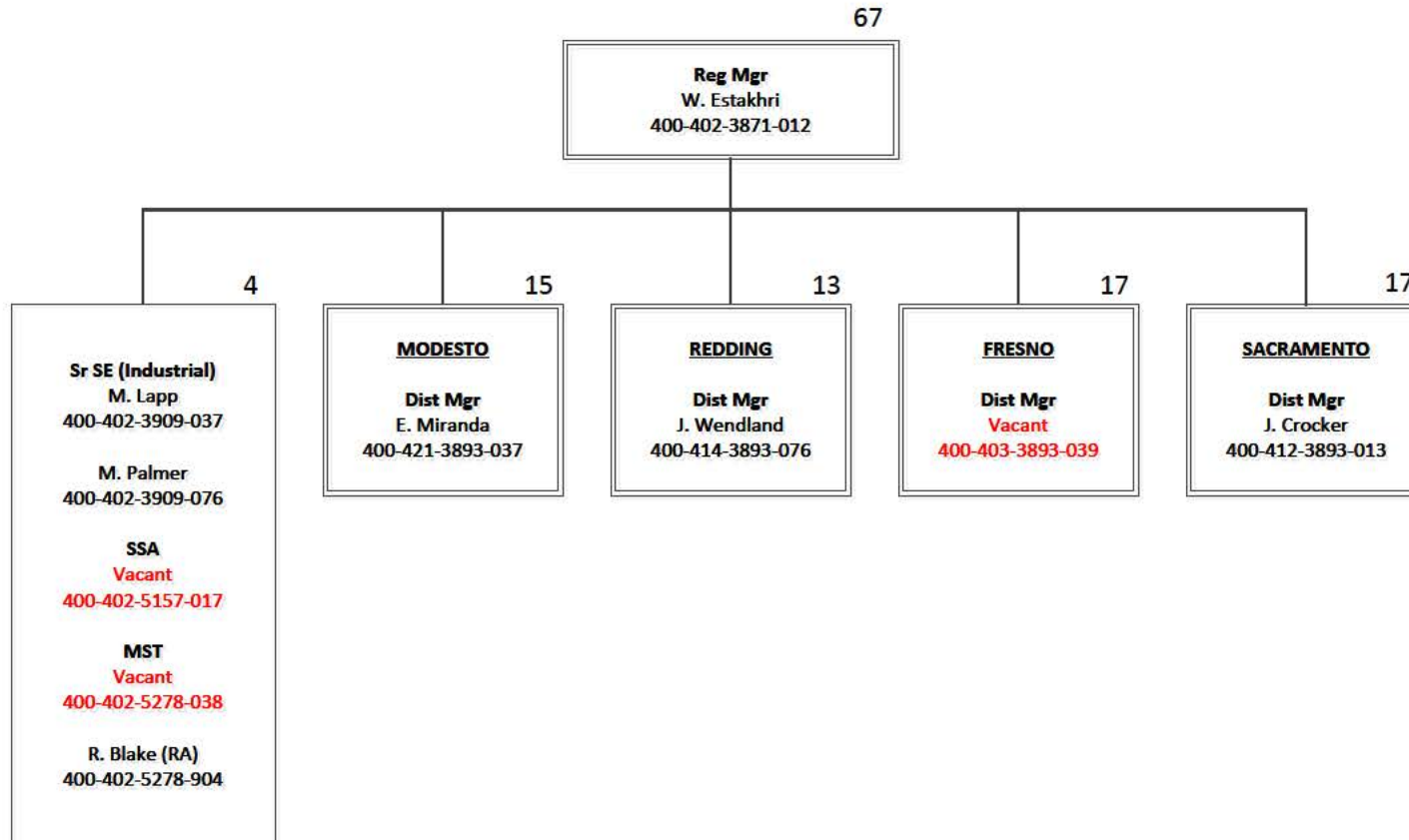


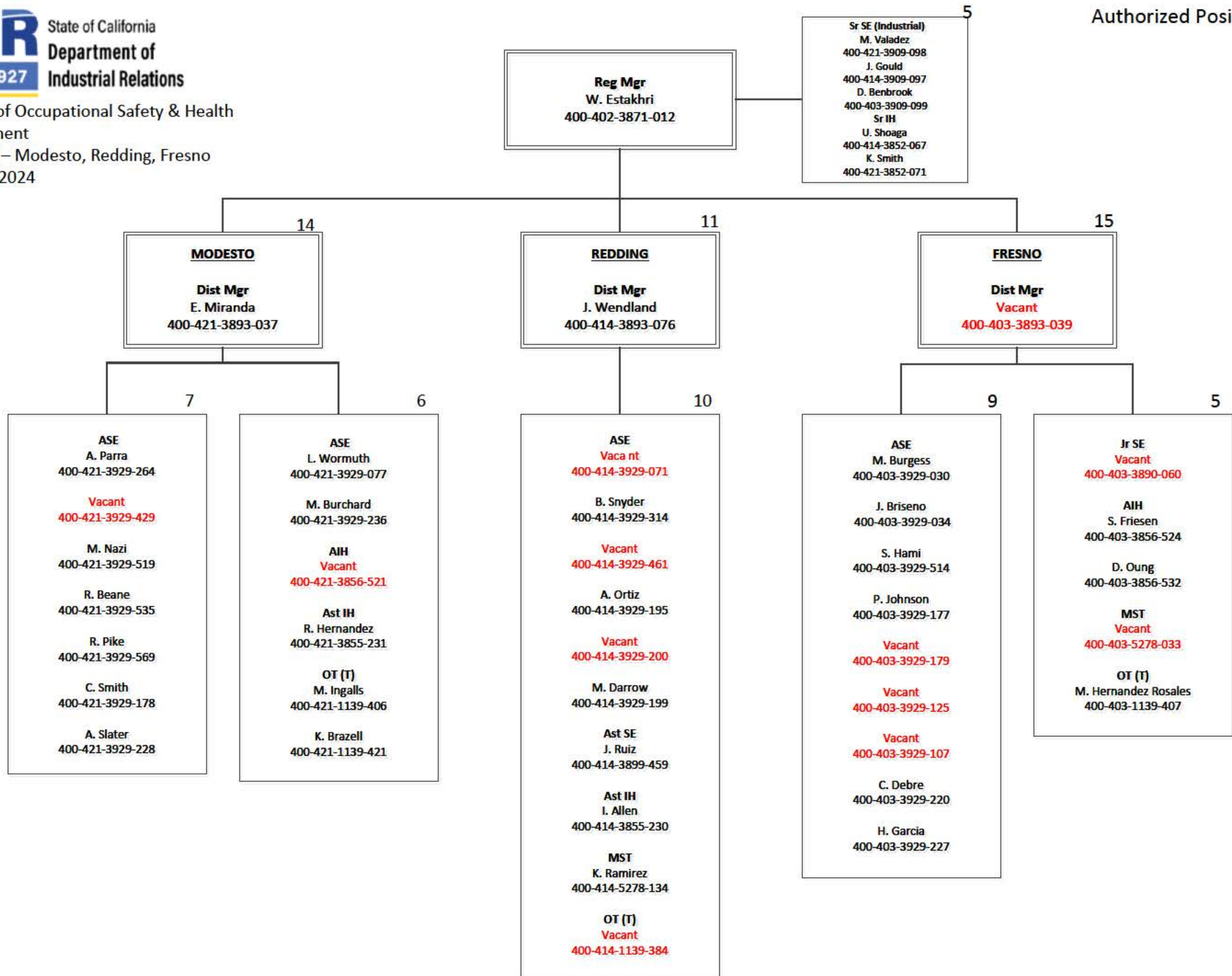
(BL) Bilingual

Division of Occupational Safety & Health
 Enforcement
 Region I – American Canyon
 June 30, 2024

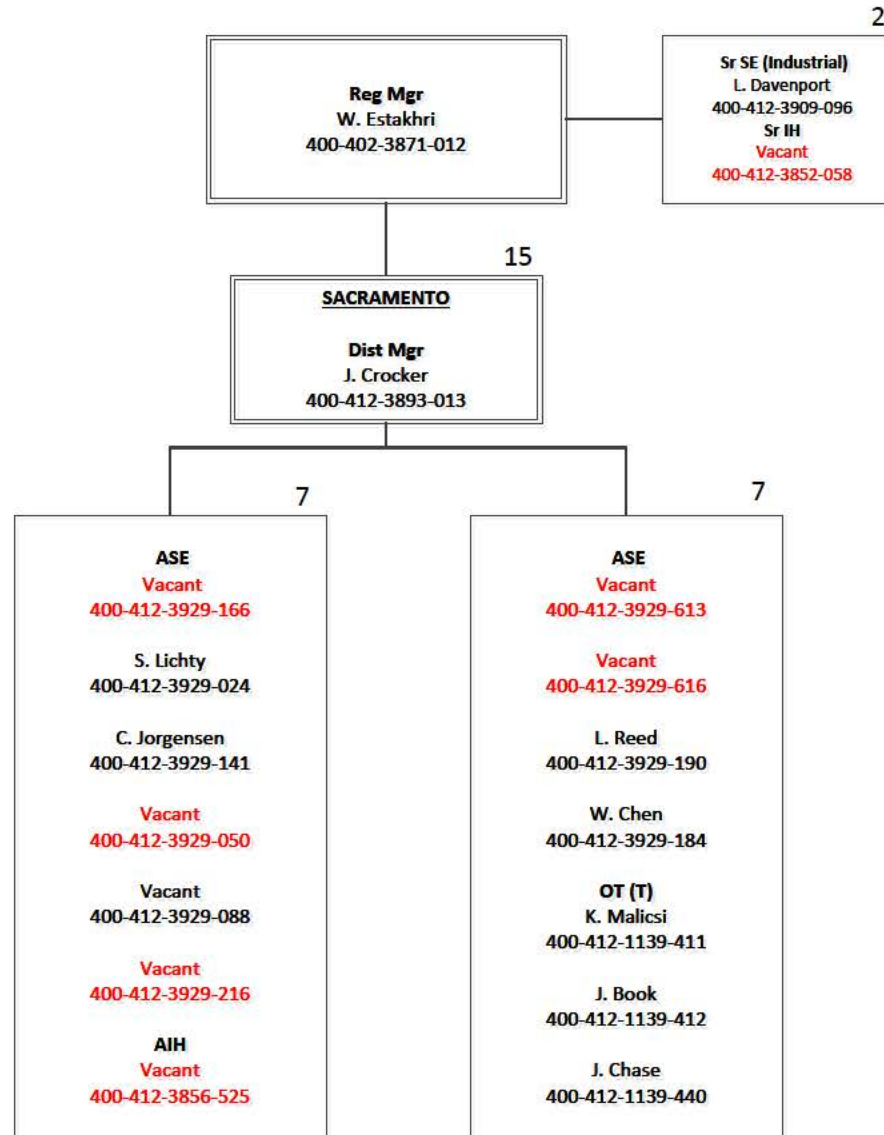


Division of Occupational Safety & Health
 Enforcement
 Region II – Sacramento HQ
 June 30, 2024

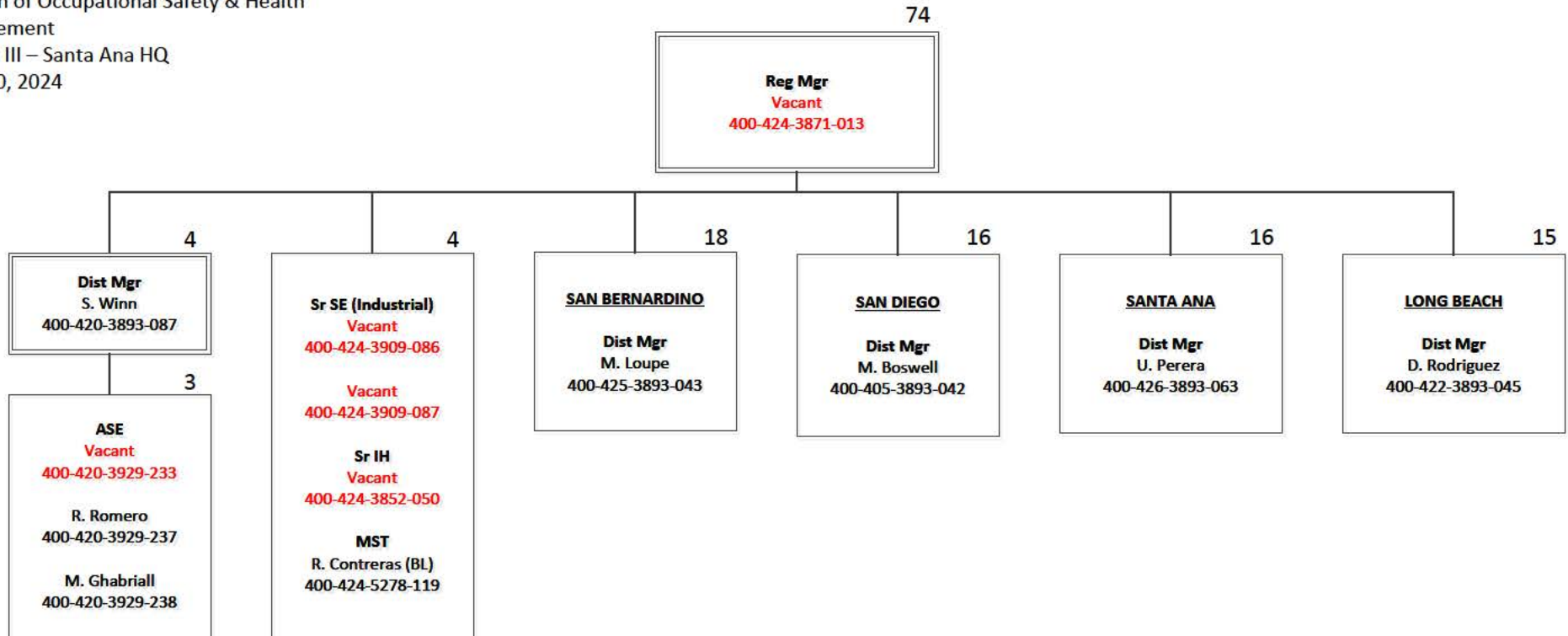




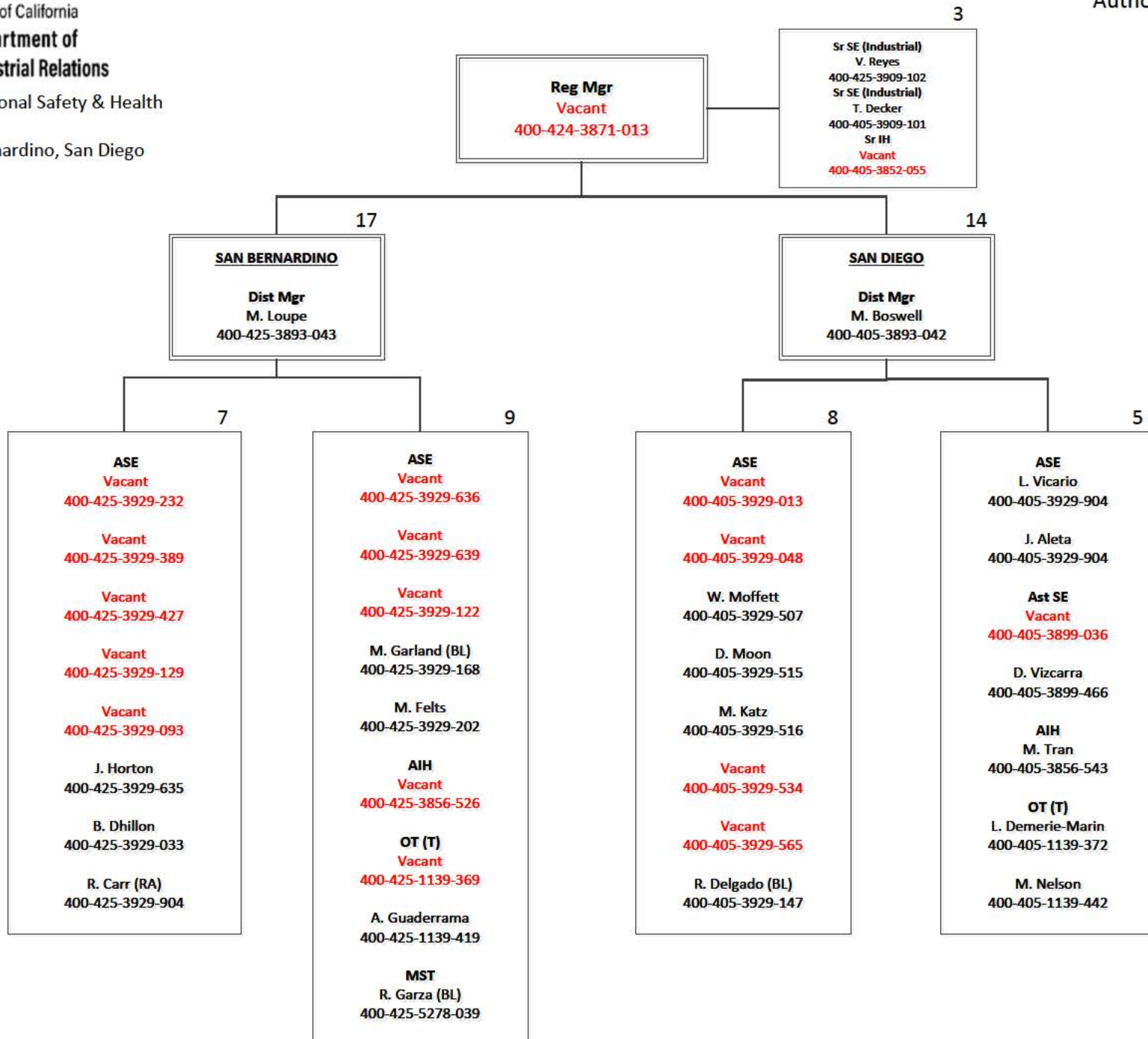
Division of Occupational Safety & Health
 Enforcement
 Region II – Sacramento
 June 30, 2024



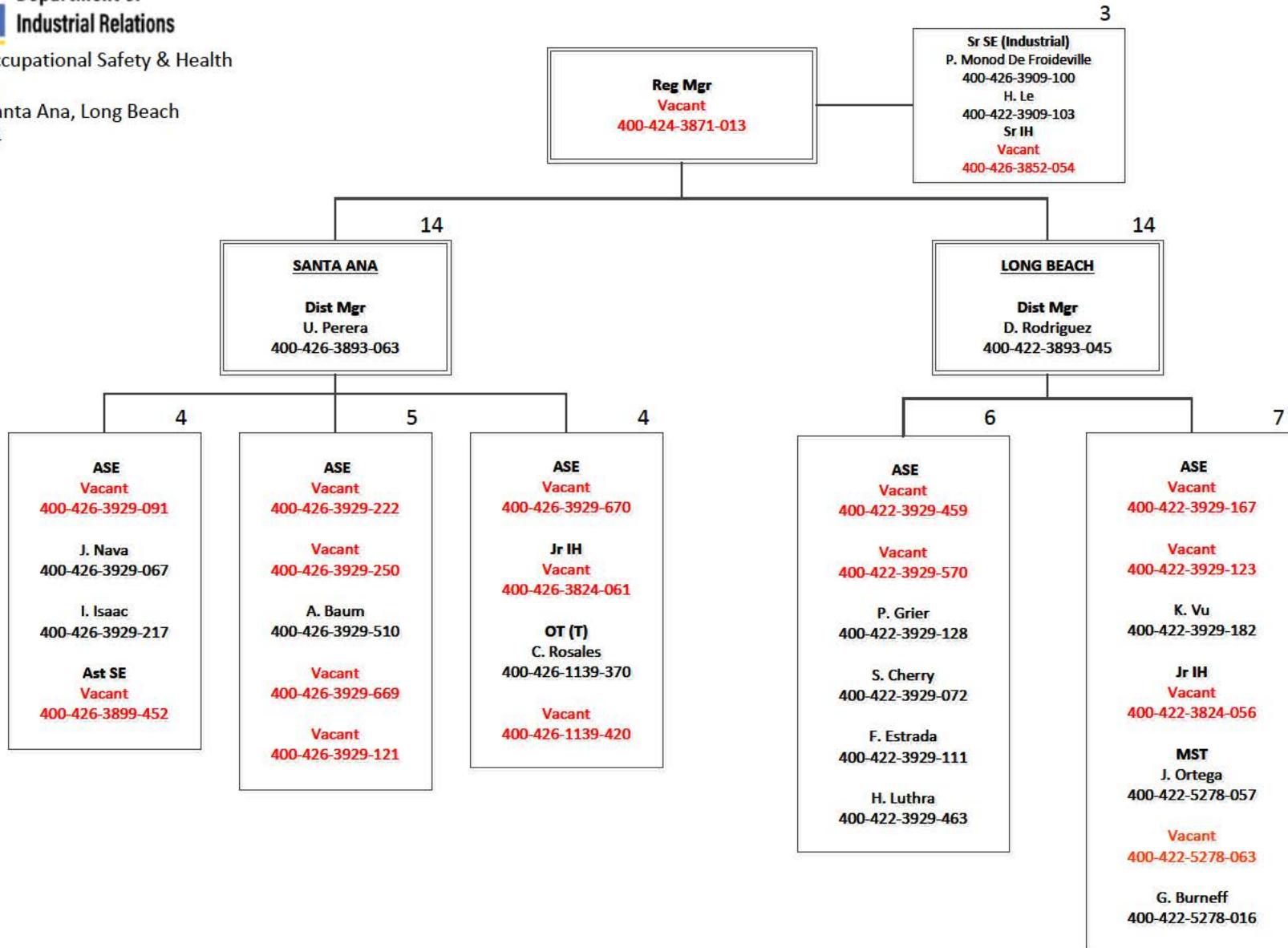
Division of Occupational Safety & Health
 Enforcement
 Region III – Santa Ana HQ
 June 30, 2024



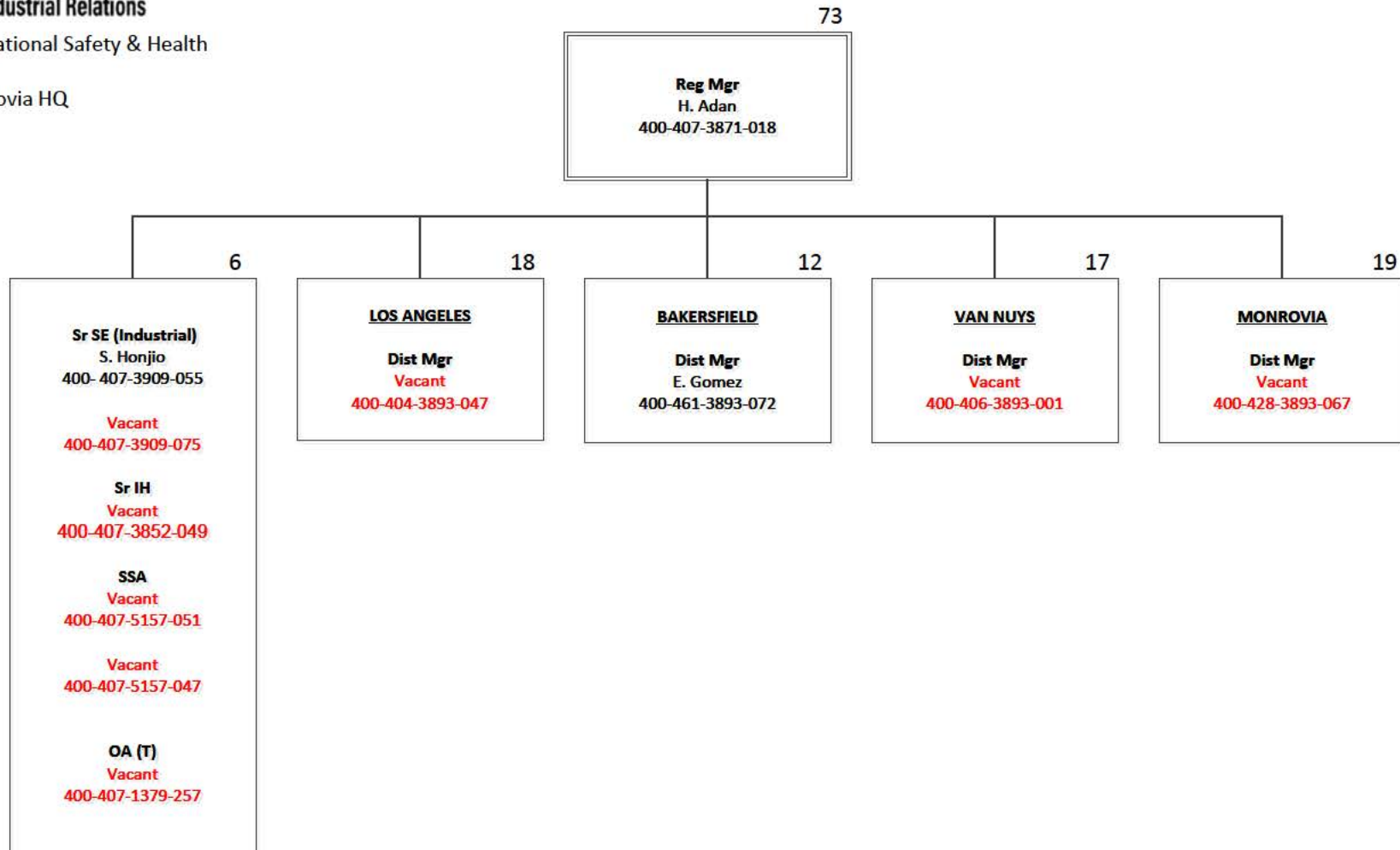
Division of Occupational Safety & Health
 Enforcement
 Region III – San Bernardino, San Diego
 June 30, 2024



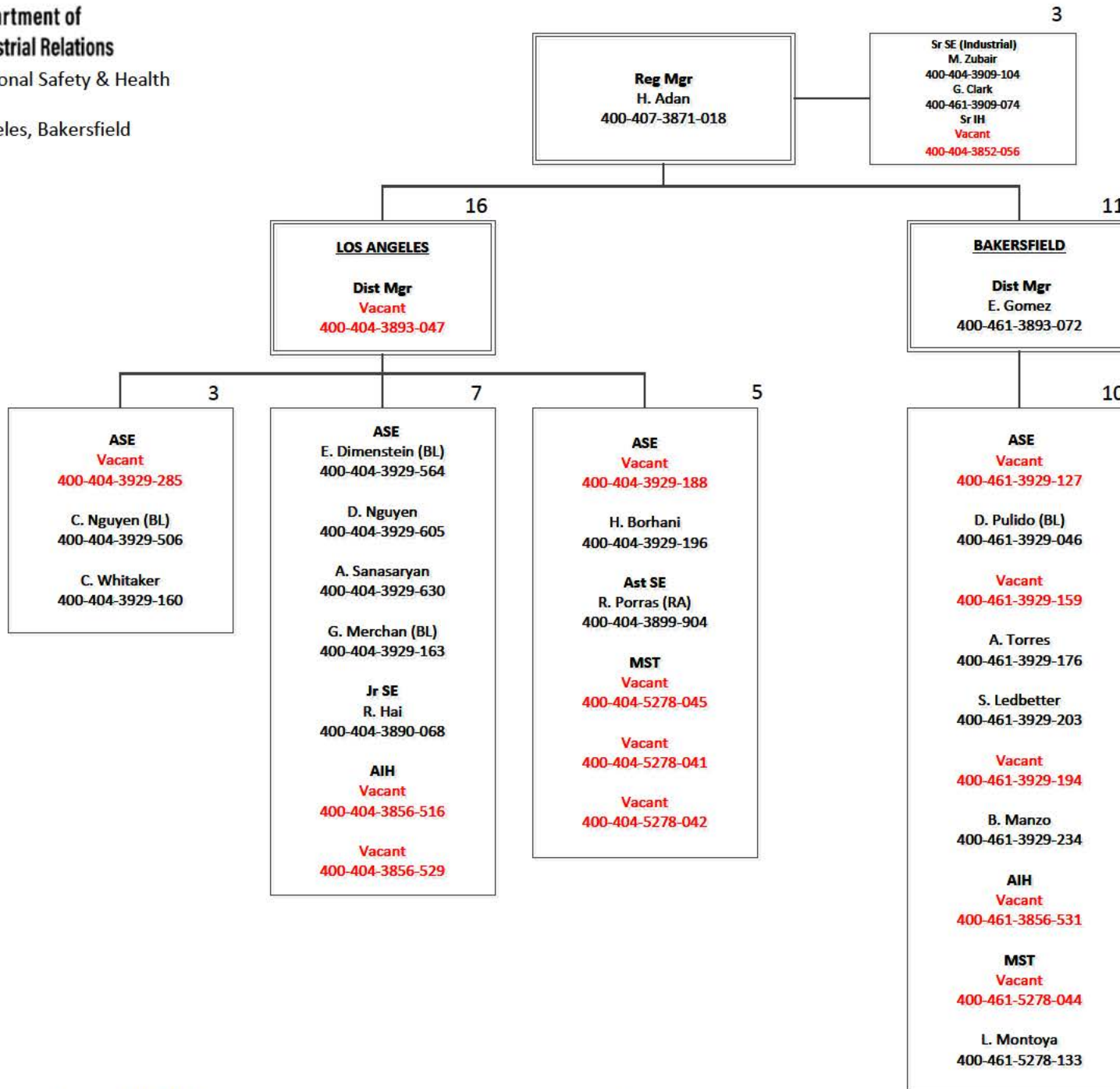
Division of Occupational Safety & Health
 Enforcement
 Region III – Santa Ana, Long Beach
 June 30, 2024



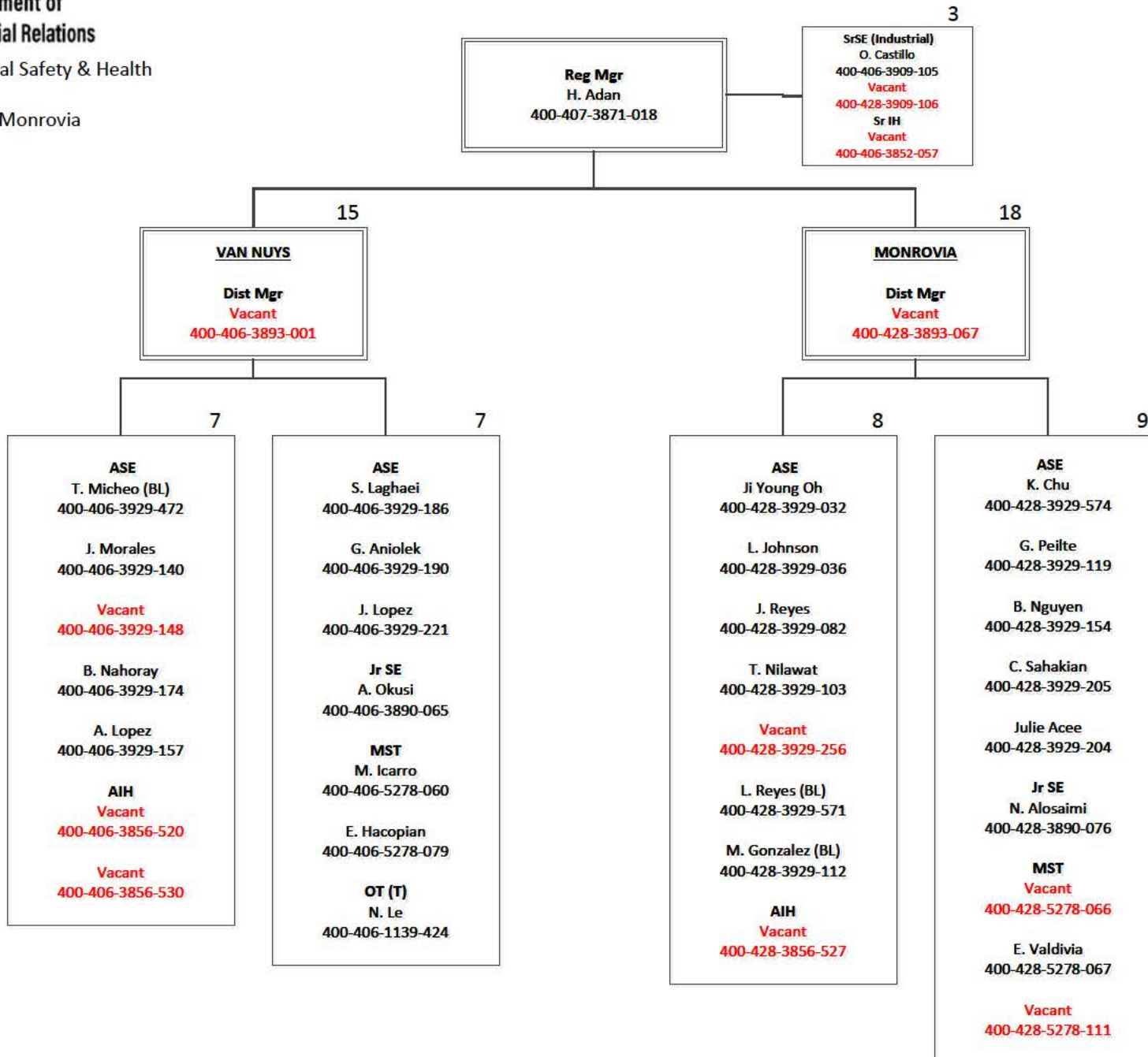
Division of Occupational Safety & Health
 Enforcement
 Region IV – Monrovia HQ
 June 30, 2024



Division of Occupational Safety & Health
 Enforcement
 Region IV – Los Angeles, Bakersfield
 June 30, 2024

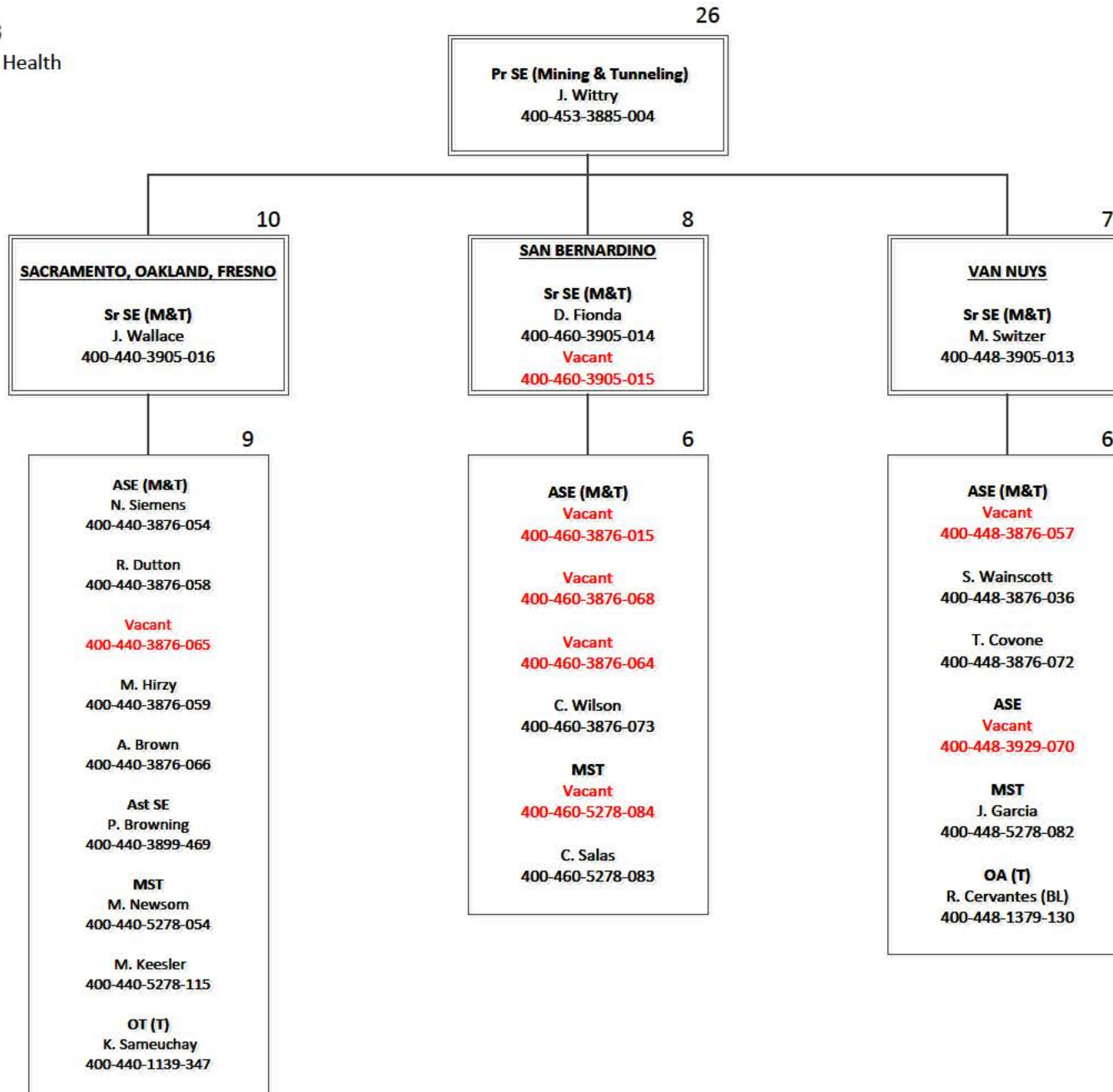


Division of Occupational Safety & Health
 Enforcement
 Region IV – Van Nuys, Monrovia
 June 30, 2024



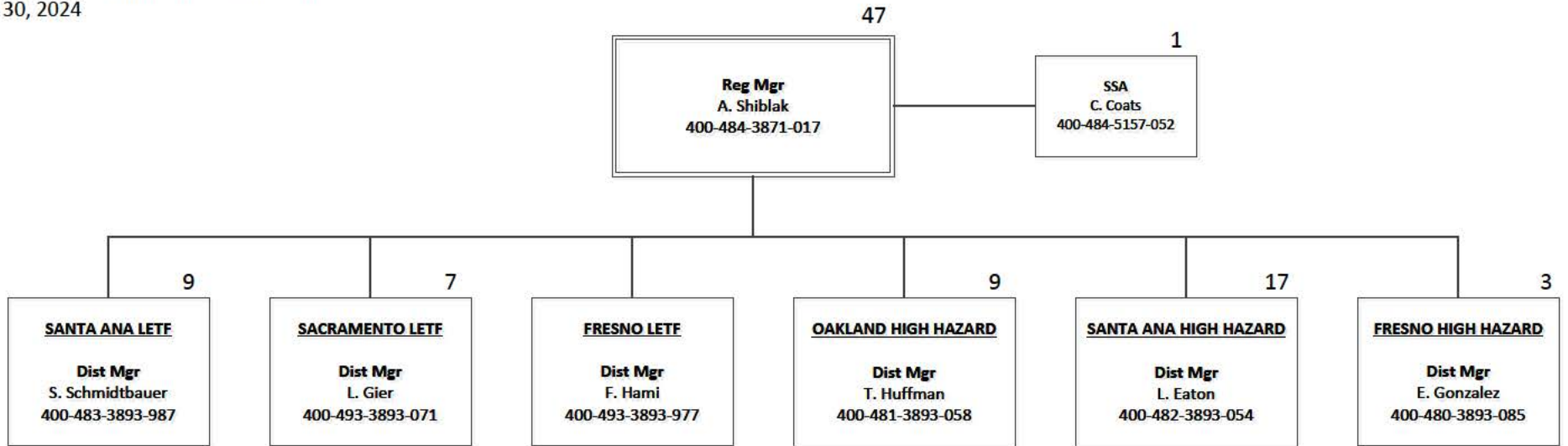
(BL) Bilingual

Division of Occupational Safety & Health
 Enforcement
 Region V – Sacramento HQ
 June 30, 2024

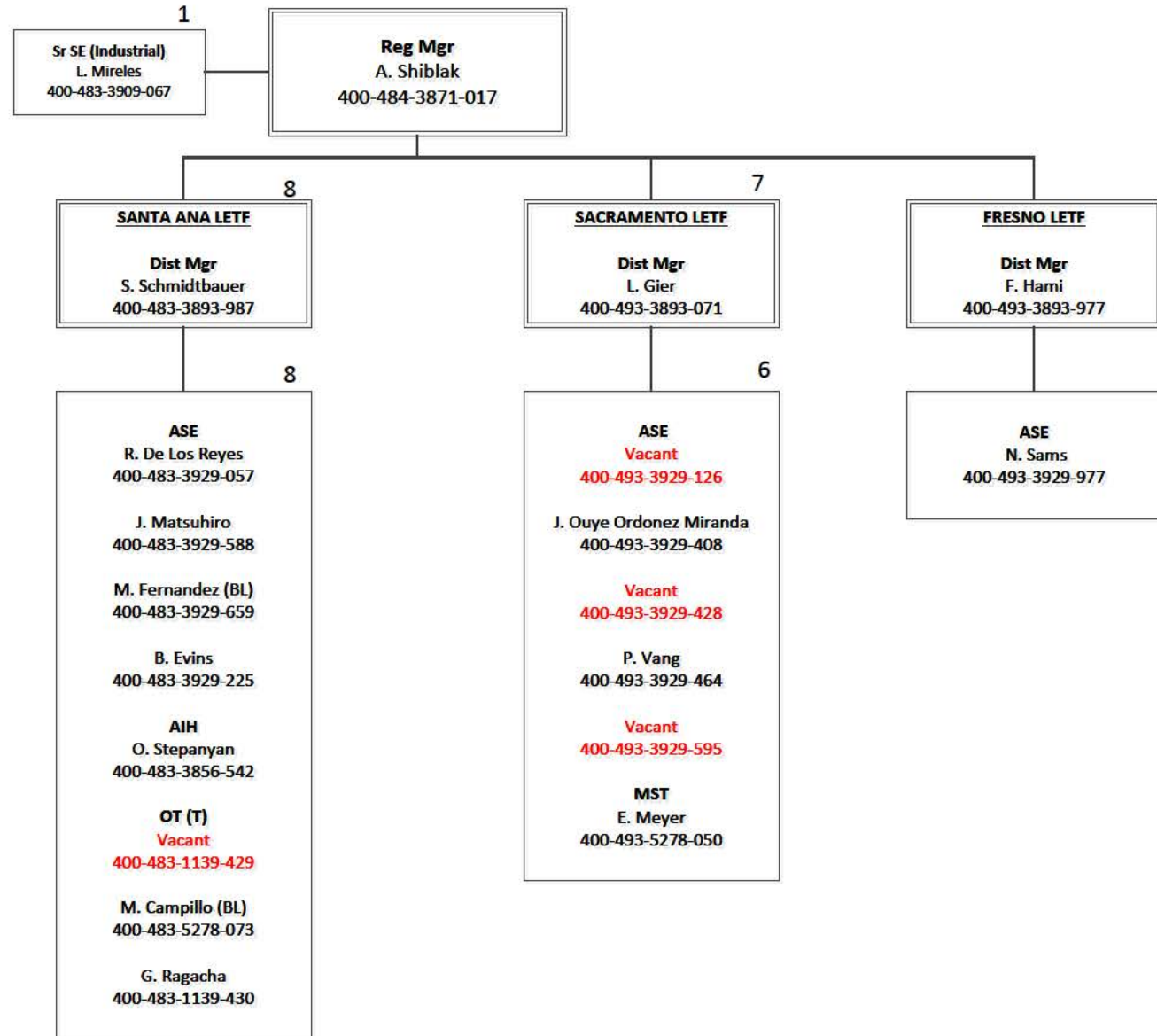


(BL) Bilingual

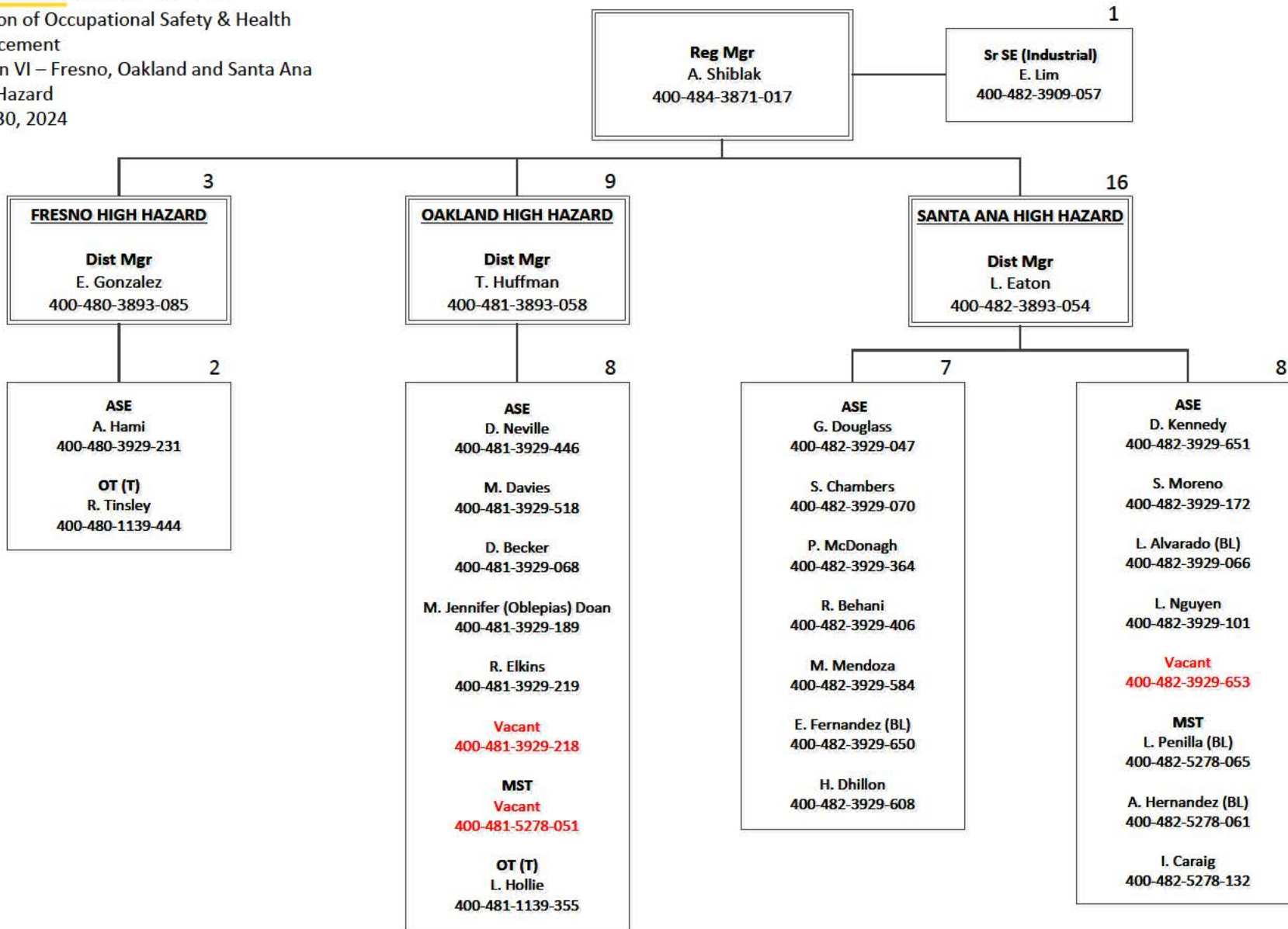
Division of Occupational Safety & Health
 Enforcement
 Region VI – Santa Ana Target Inspections
 June 30, 2024



Division of Occupational Safety & Health
 Enforcement
 Region VI – Santa Ana LETF, Sacramento LETF,
 Fresno LETF
 June 30, 2024

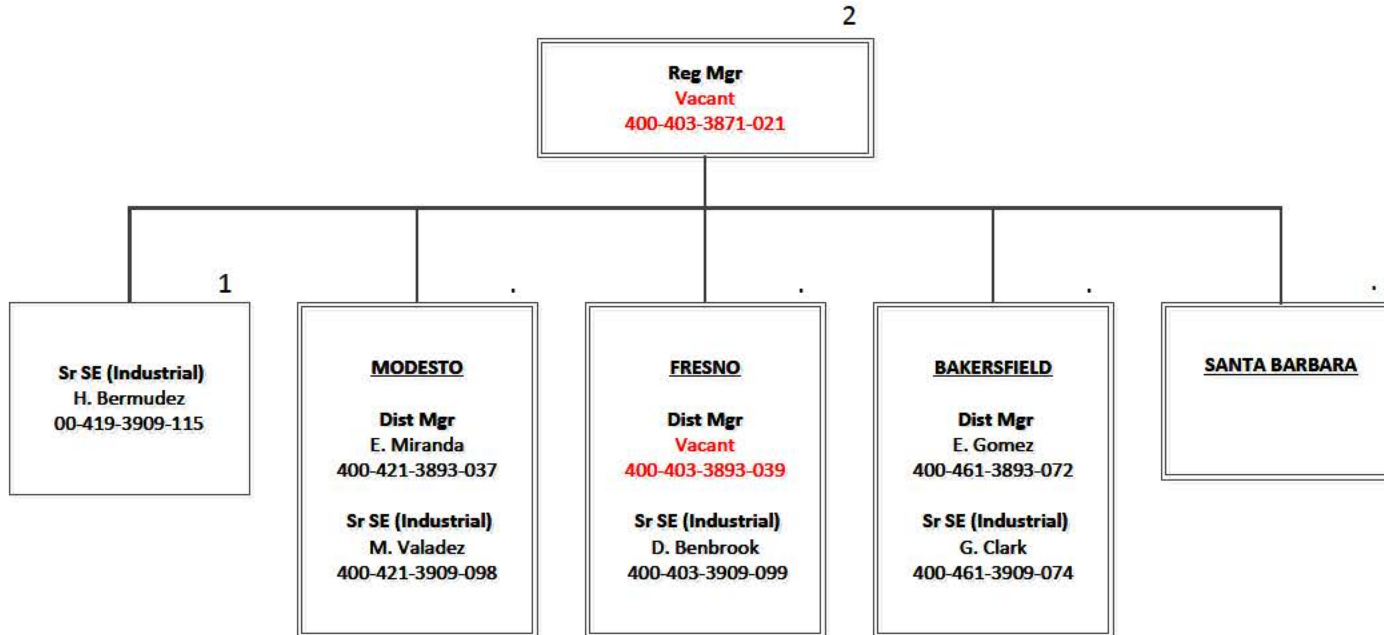


Division of Occupational Safety & Health
 Enforcement
 Region VI – Fresno, Oakland and Santa Ana
 High Hazard
 June 30, 2024

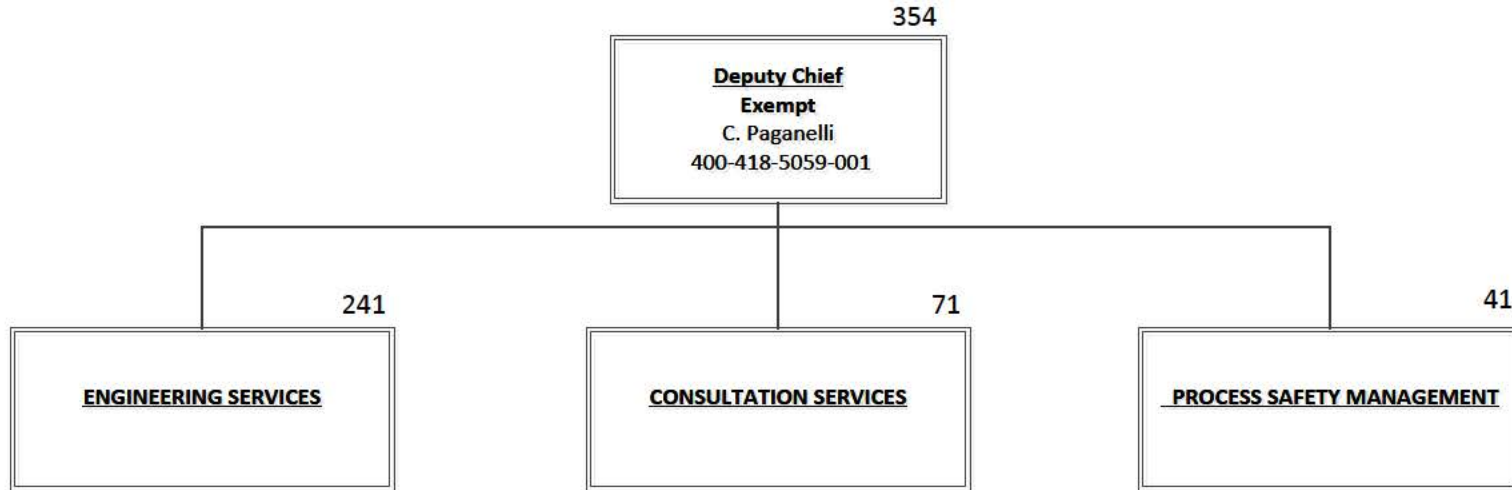


(BL) Bilingual

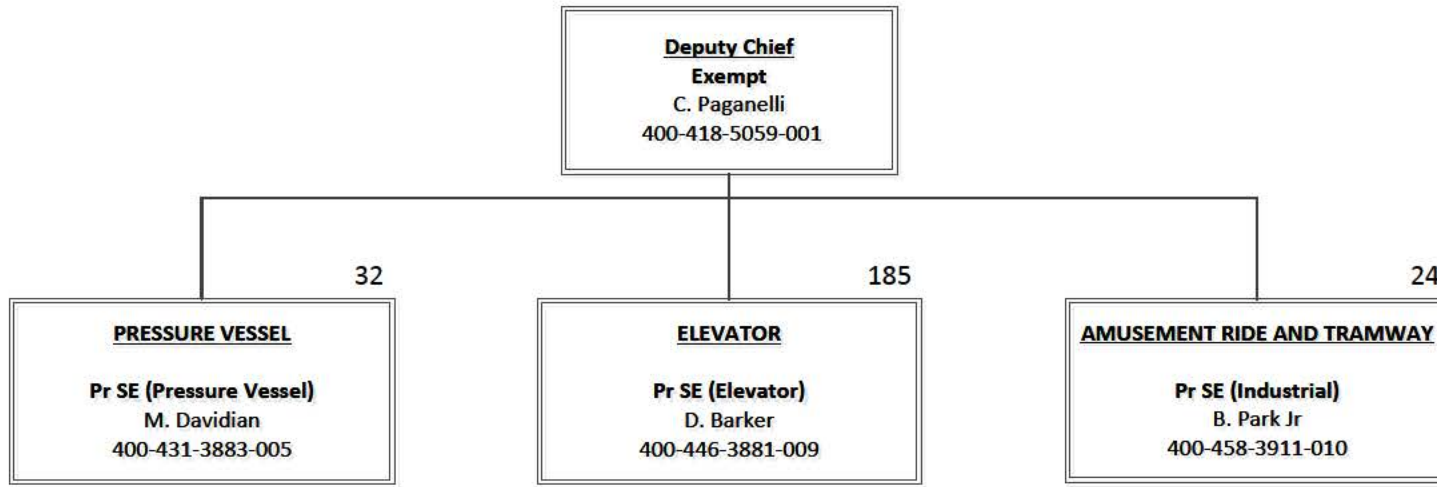
Division of Occupational Safety & Health
Enforcement
Region VIII – Fresno HQ
June 30, 2024



Division of Occupational Safety & Health
Engineering Services, Consultation Services,
& Process Safety Management
June 30, 2024

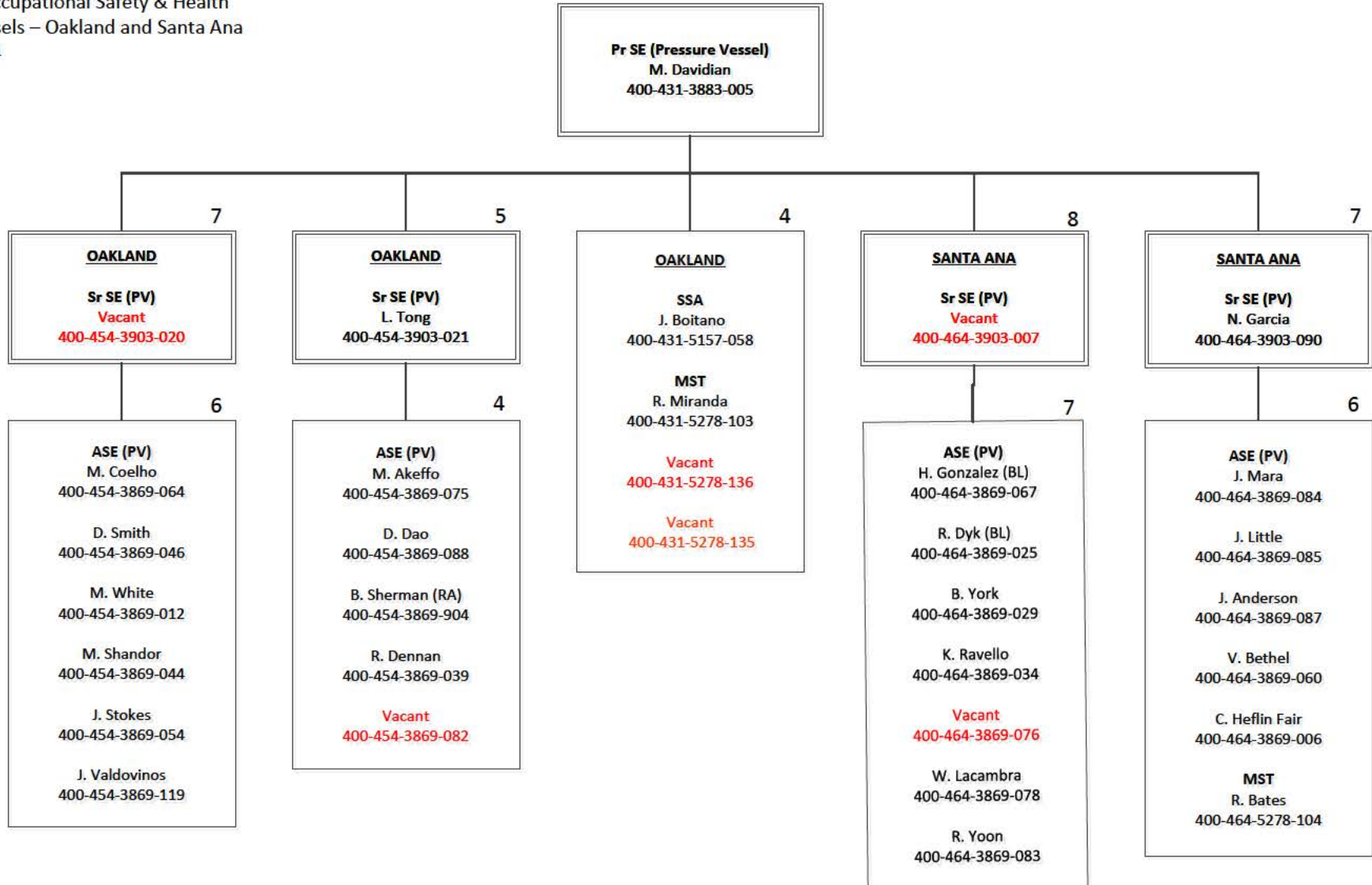


Division of Occupational Safety & Health
Engineering Services (PV, Elev, and AR&T)
June 30, 2024

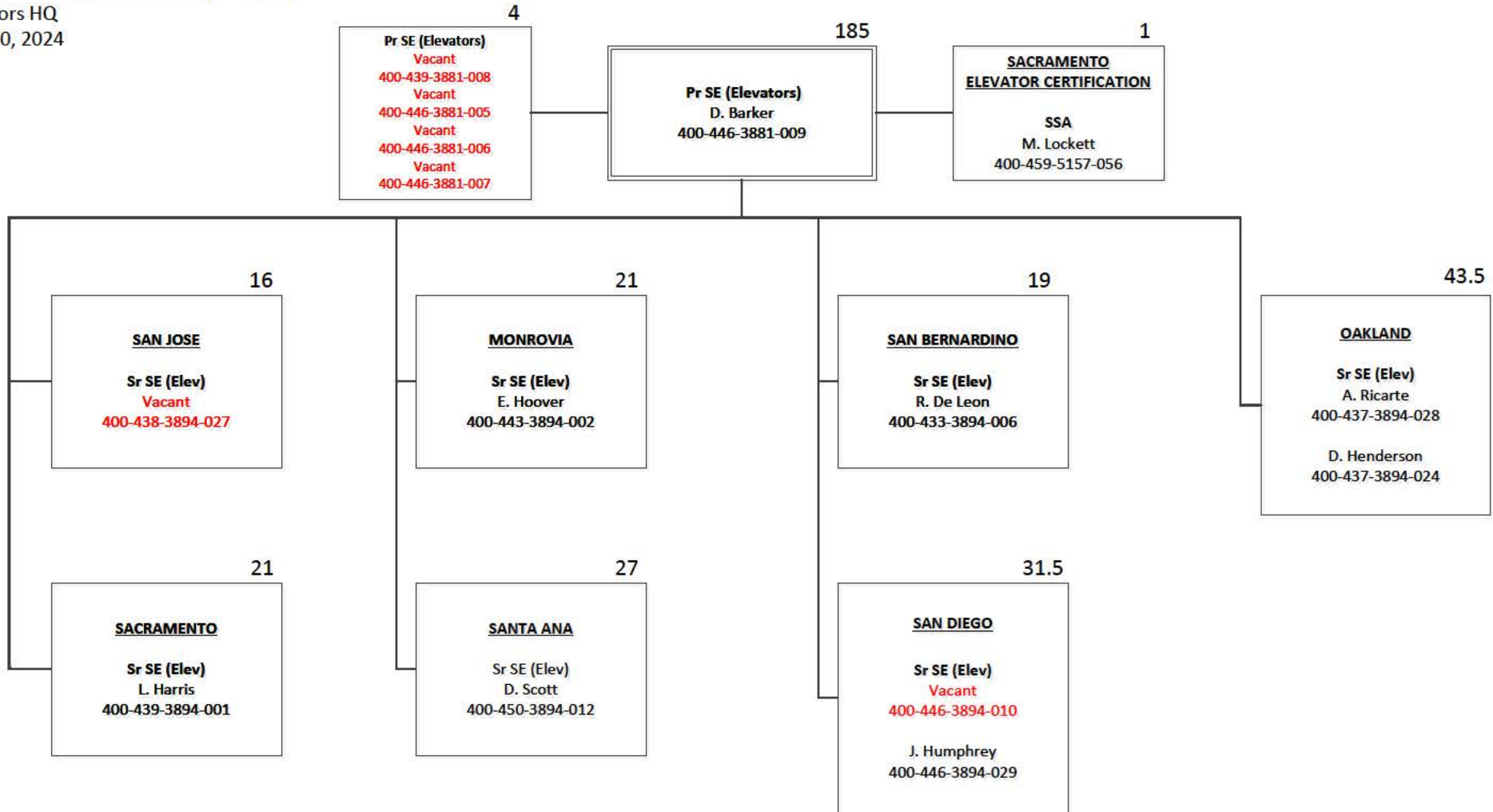


Division of Occupational Safety & Health
 Pressure Vessels – Oakland and Santa Ana
 June 30, 2024

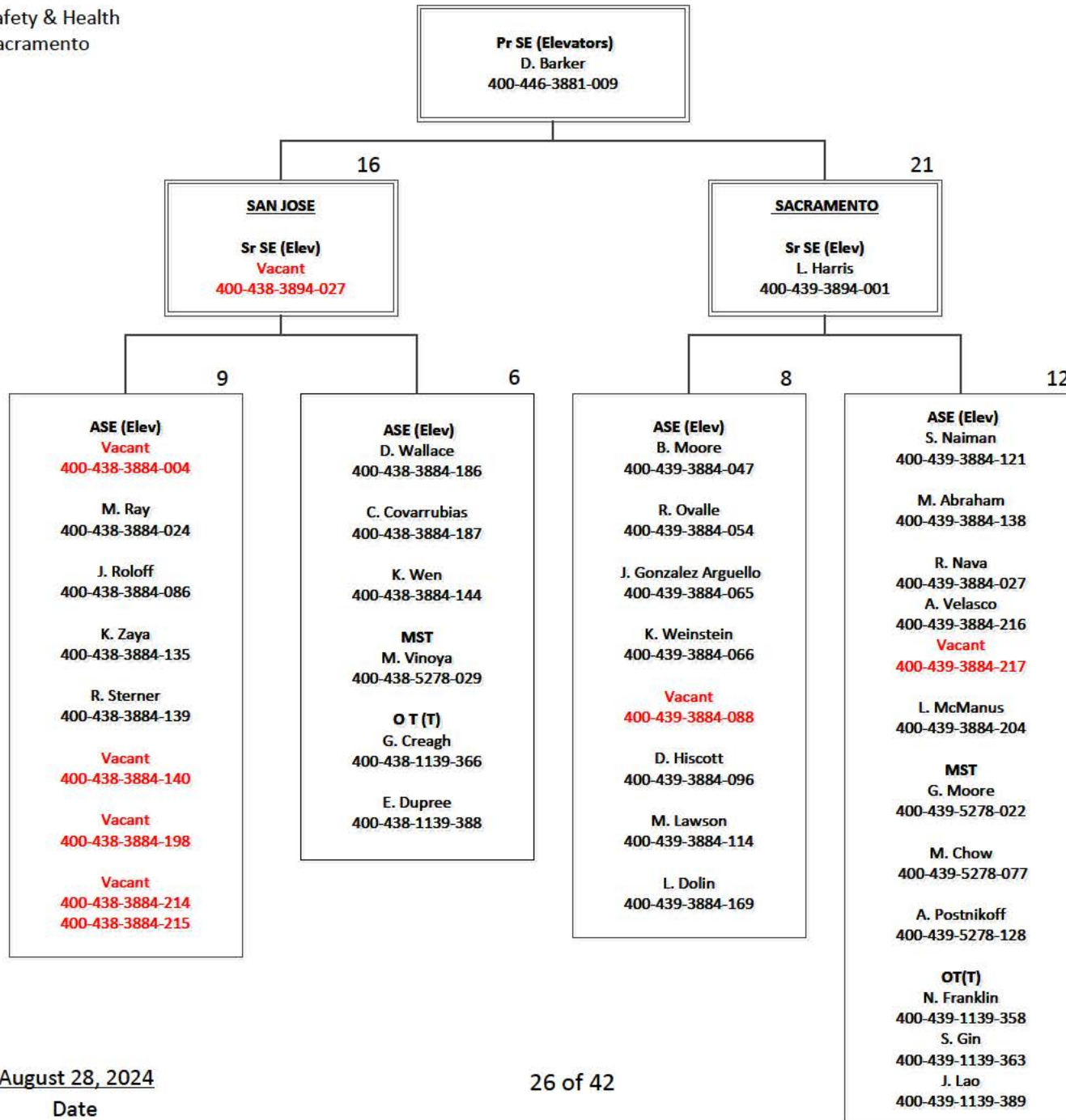
32



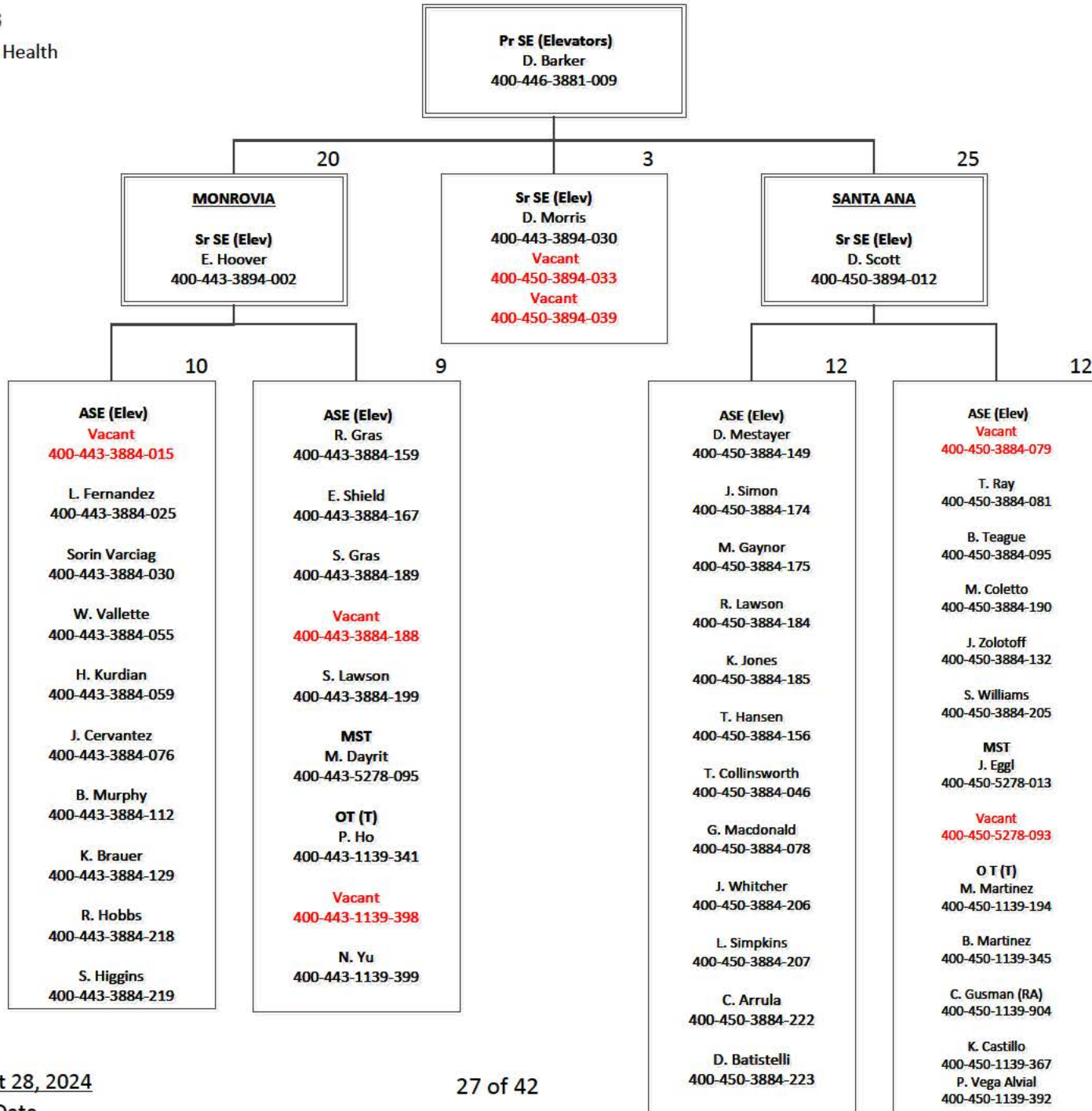
Division of Occupational Safety & Health
 Elevators HQ
 June 30, 2024



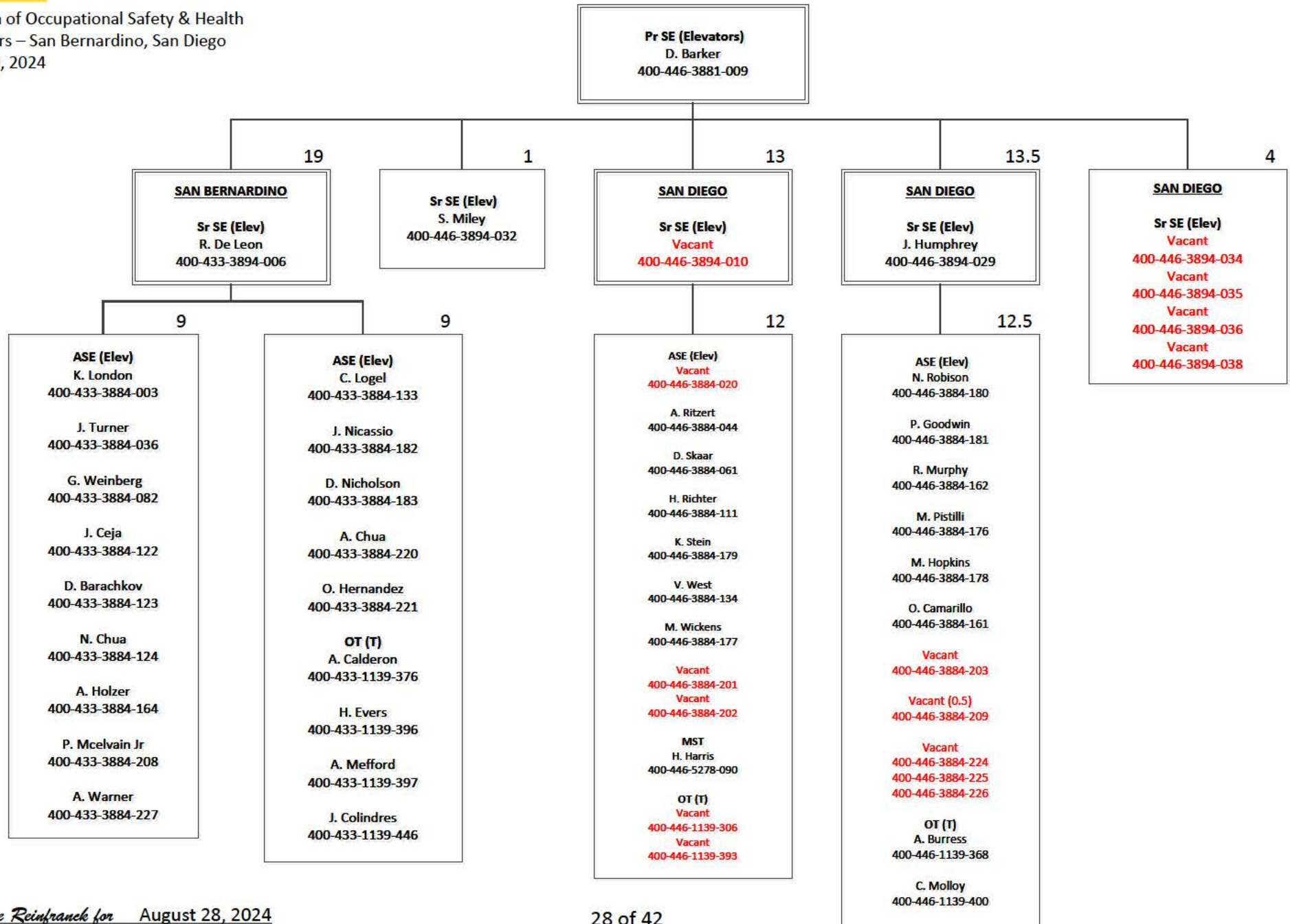
Division of Occupational Safety & Health
 Elevators – San Jose HQ, Sacramento
 June 30, 2024



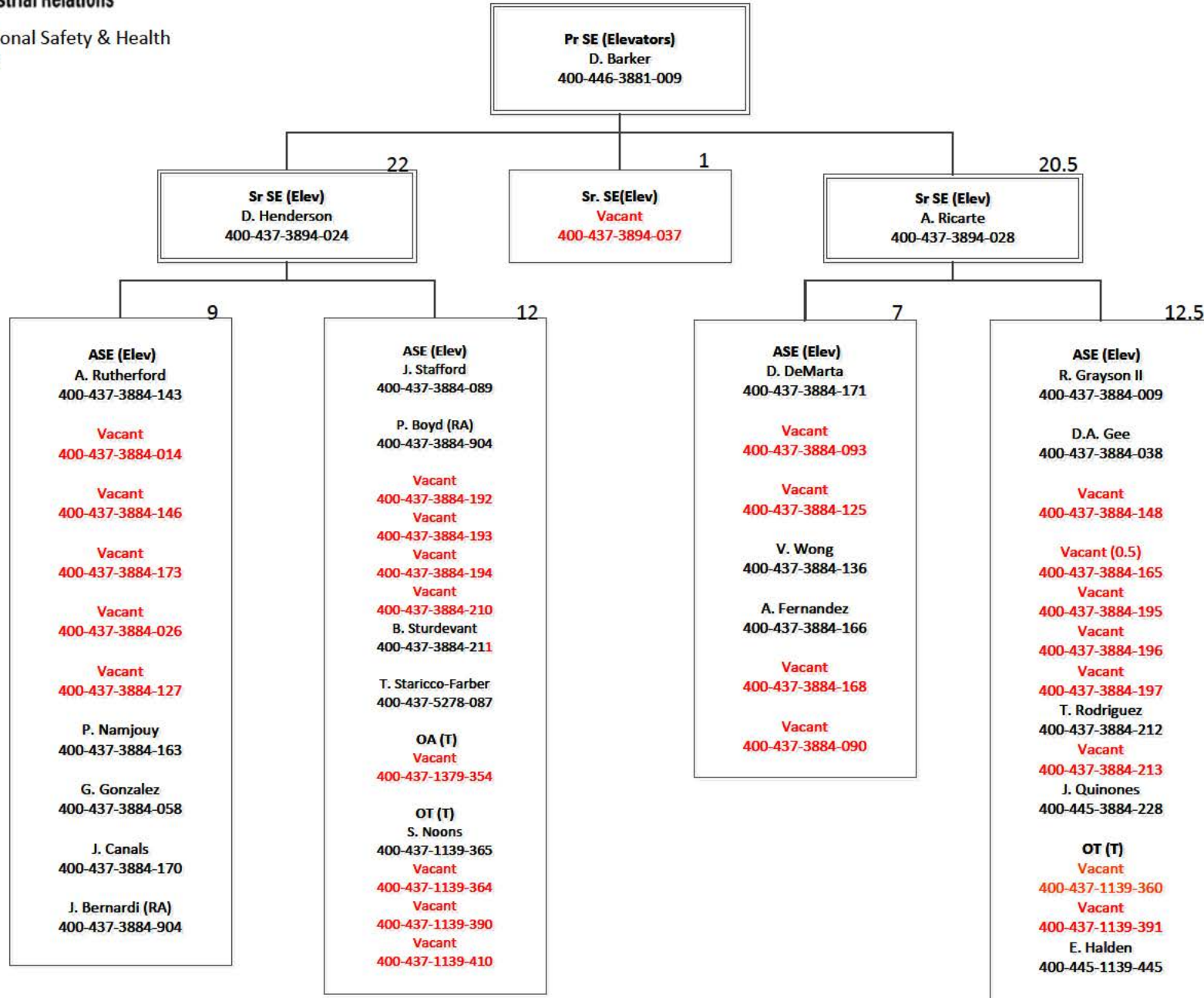
Division of Occupational Safety & Health
 Elevators – Monrovia, Santa Ana
 June 30, 2024



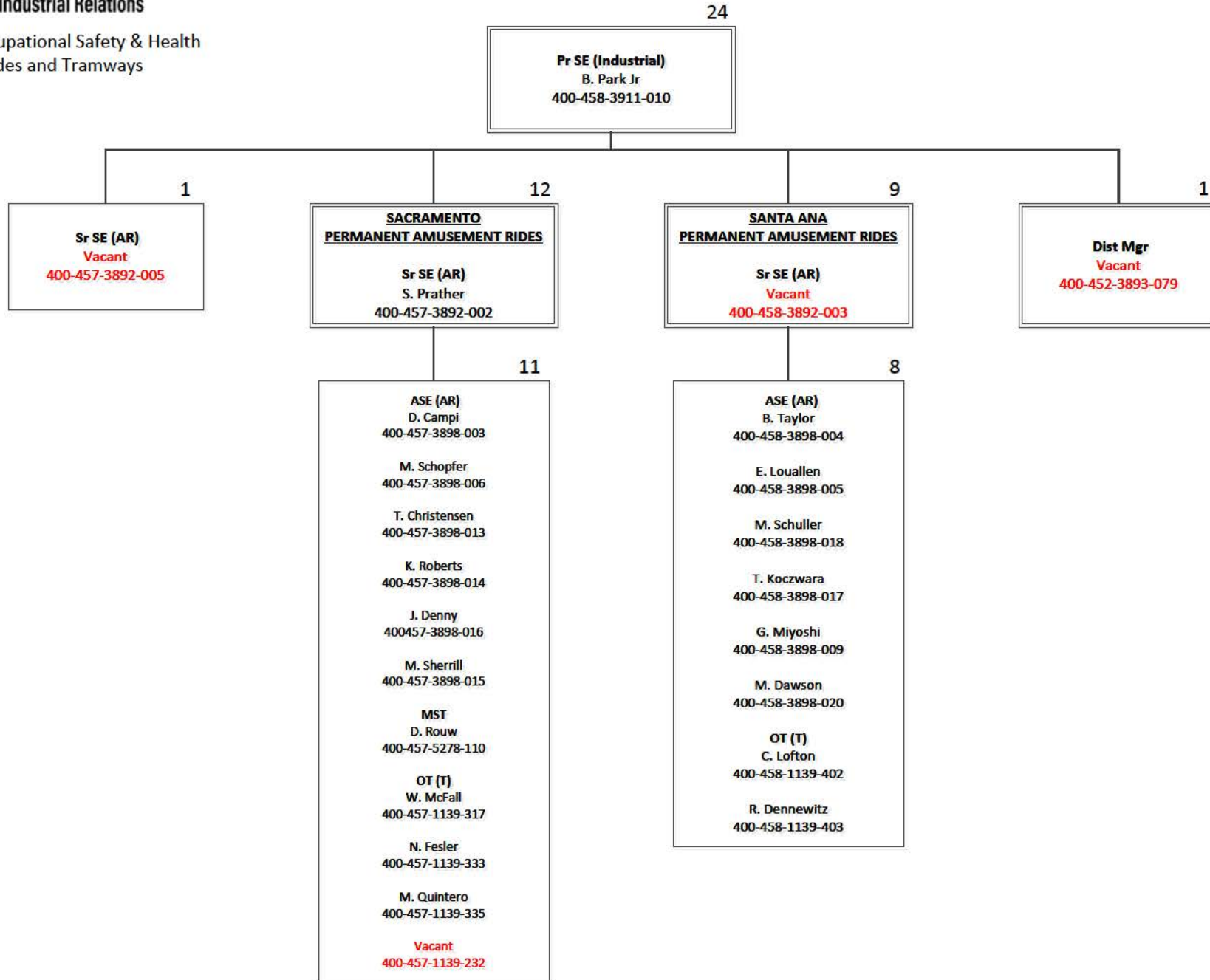
Division of Occupational Safety & Health
 Elevators – San Bernardino, San Diego
 June 30, 2024

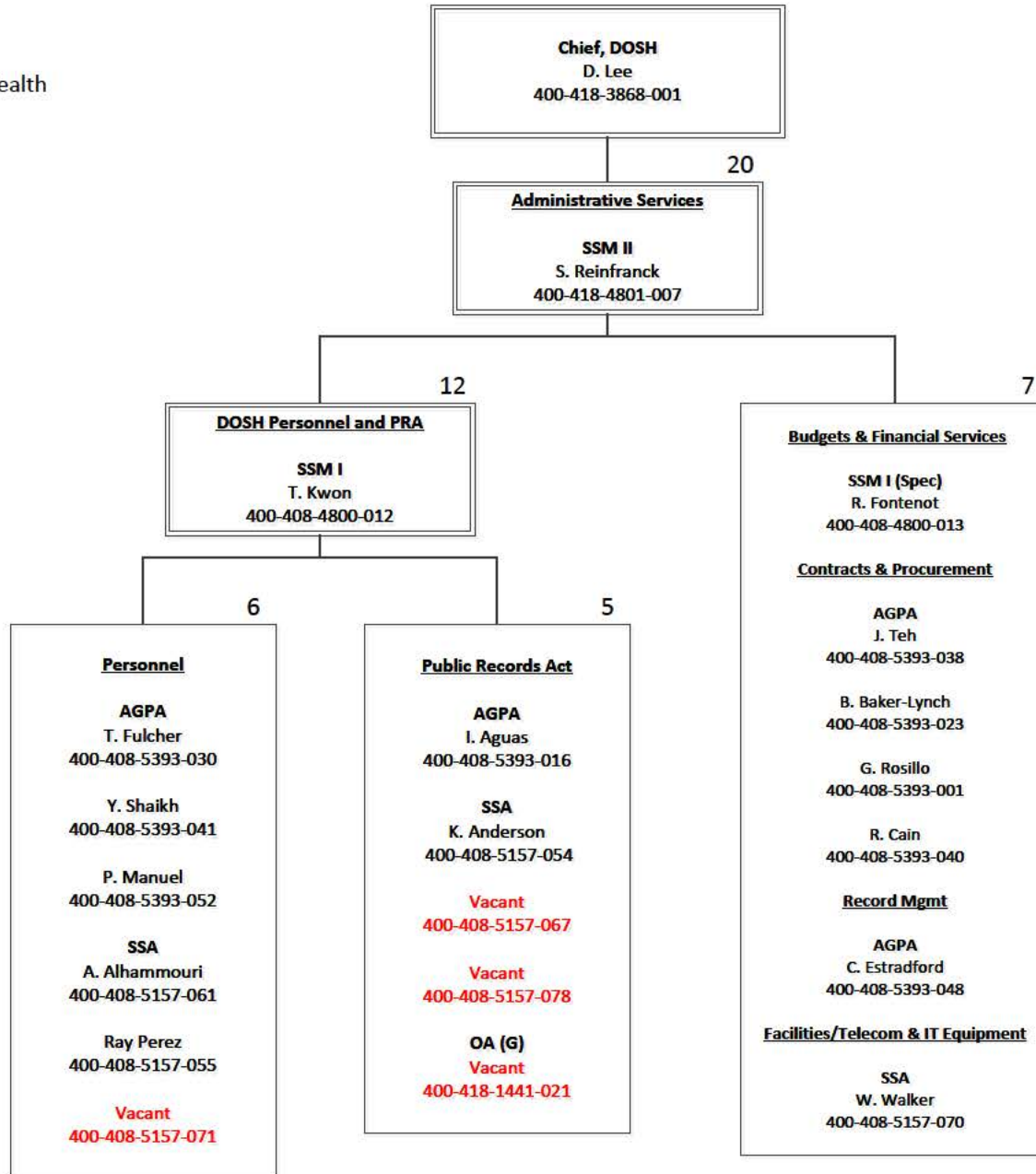


Division of Occupational Safety & Health
 Elevators – Oakland
 June 30, 2024

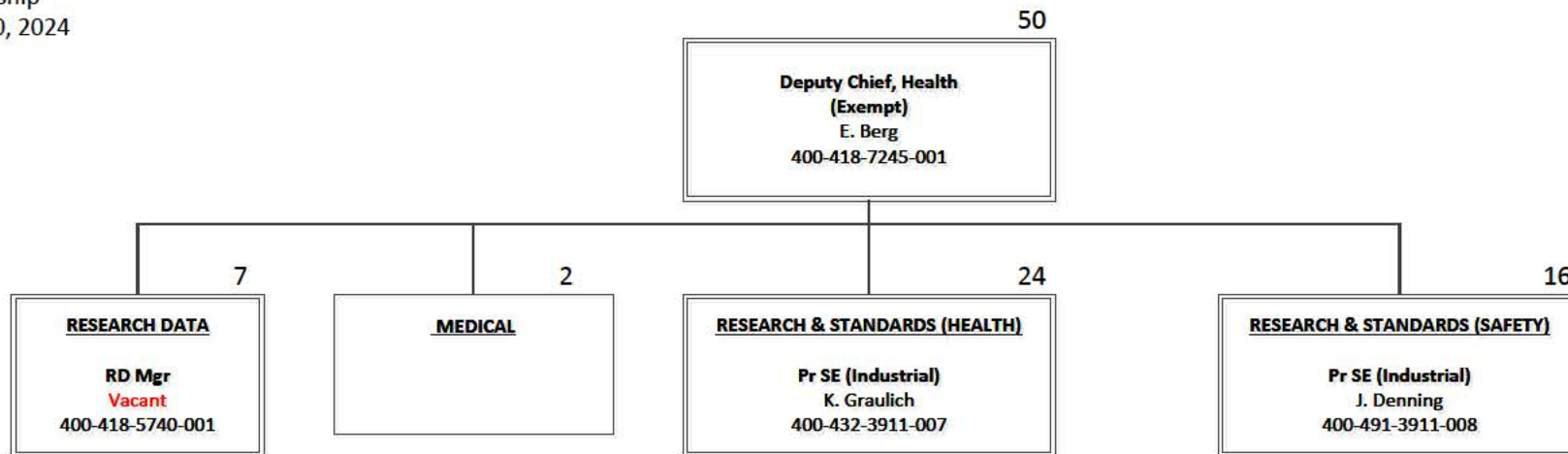


Division of Occupational Safety & Health
 Amusement Rides and Tramways
 June 30, 2024

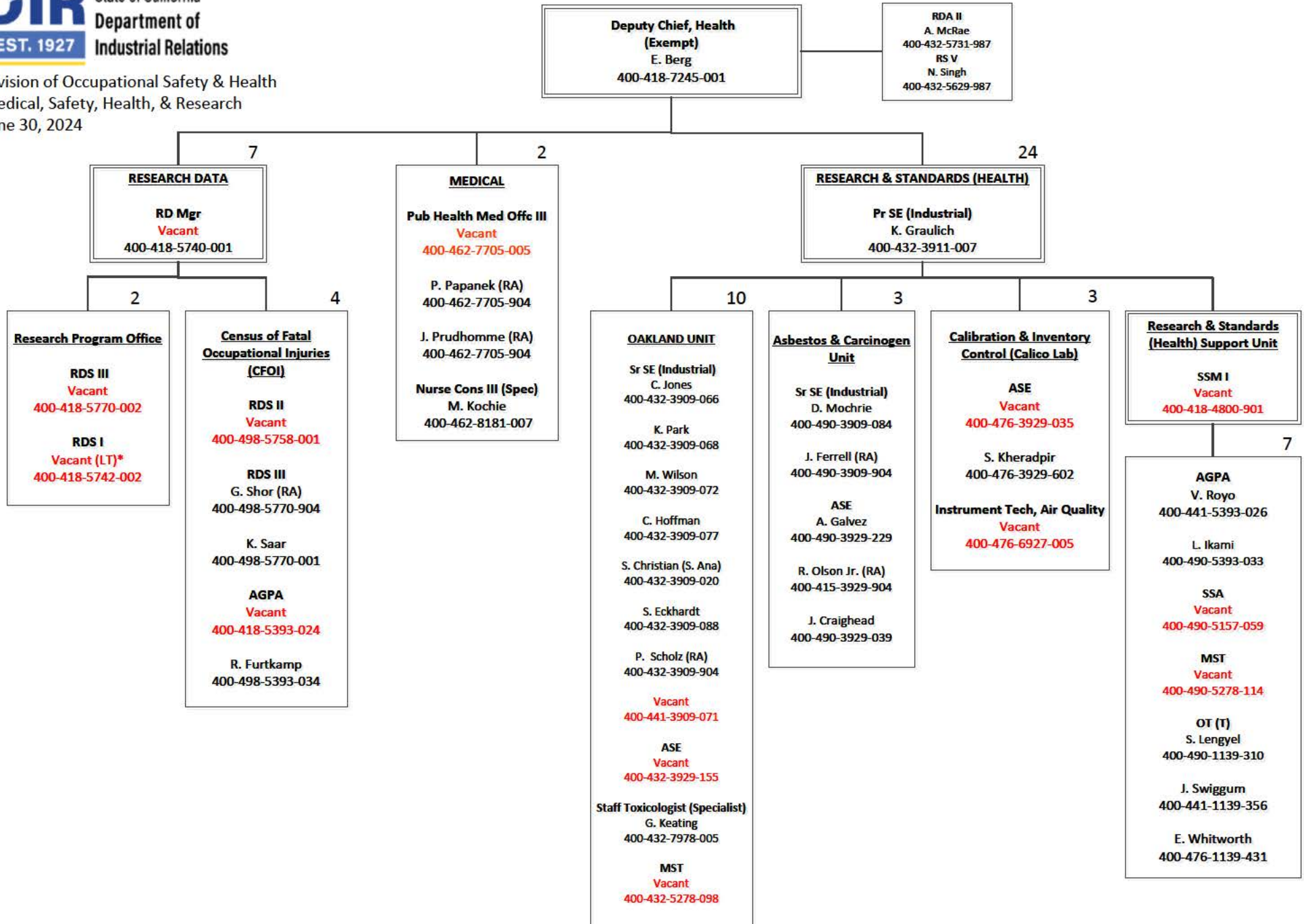




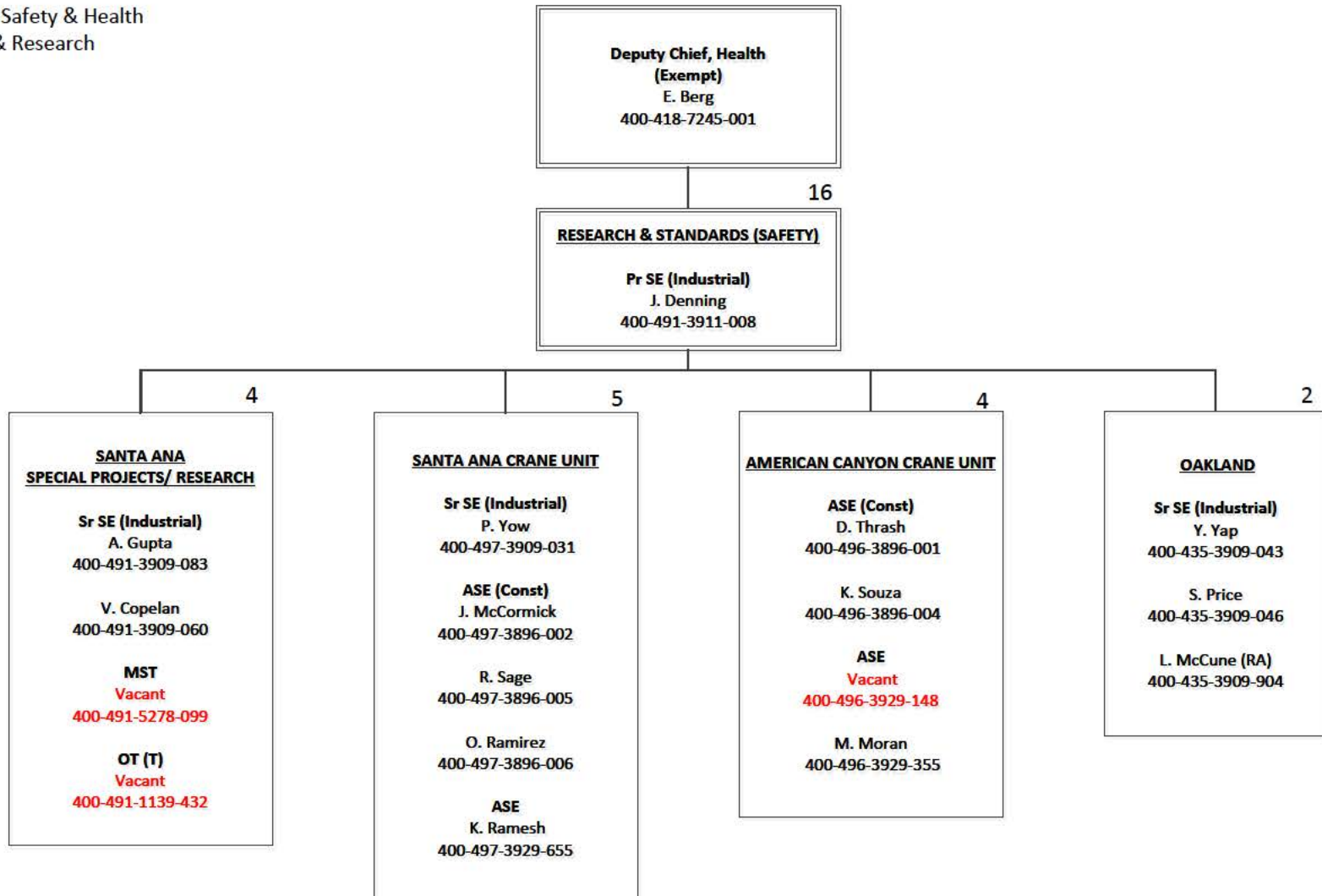
Division of Occupational Safety & Health
Medical, Safety, Health & Research
Leadership
June 30, 2024



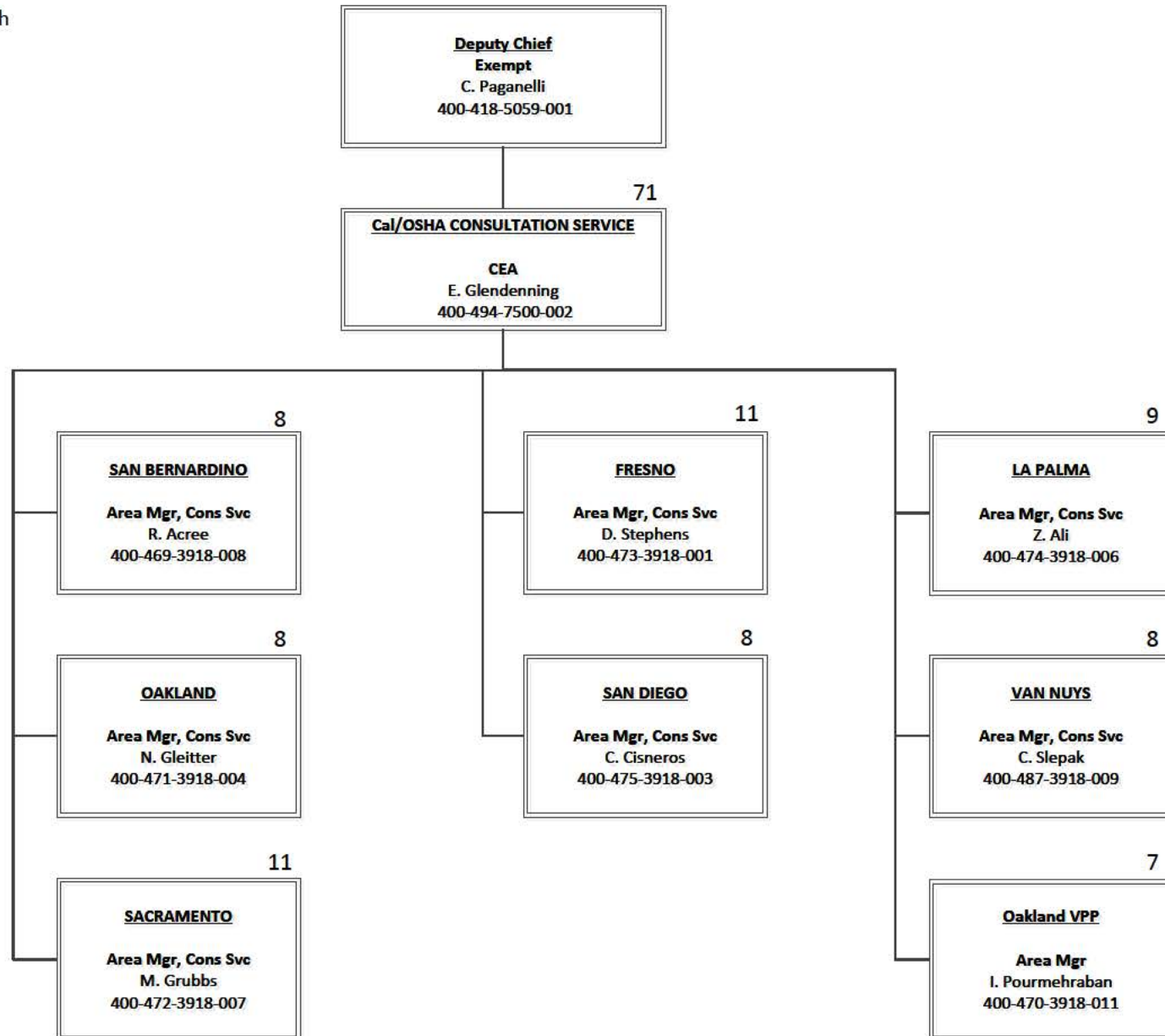
Division of Occupational Safety & Health
 Medical, Safety, Health, & Research
 June 30, 2024



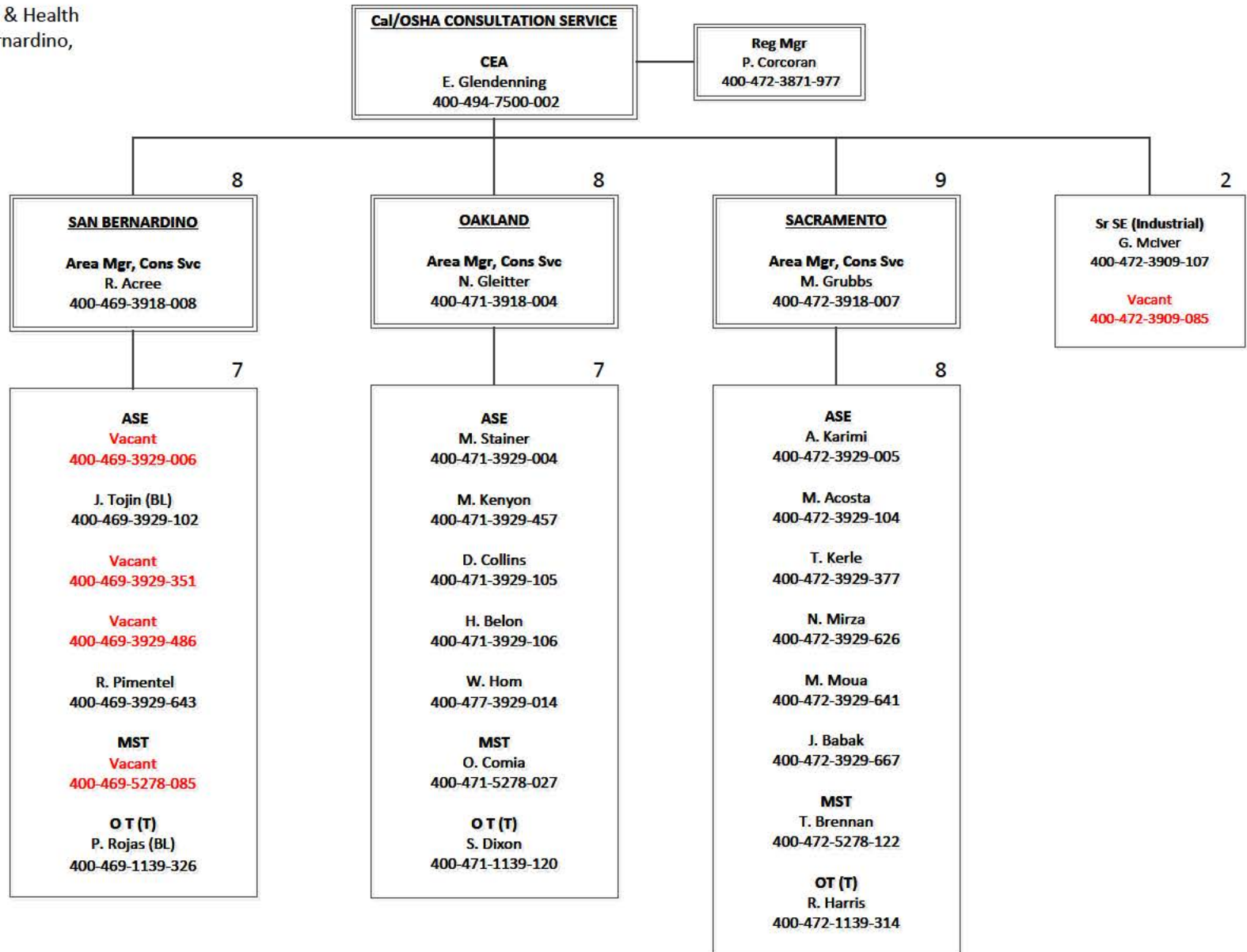
Division of Occupational Safety & Health
 Medical, Safety, Health & Research
 June 30, 2024



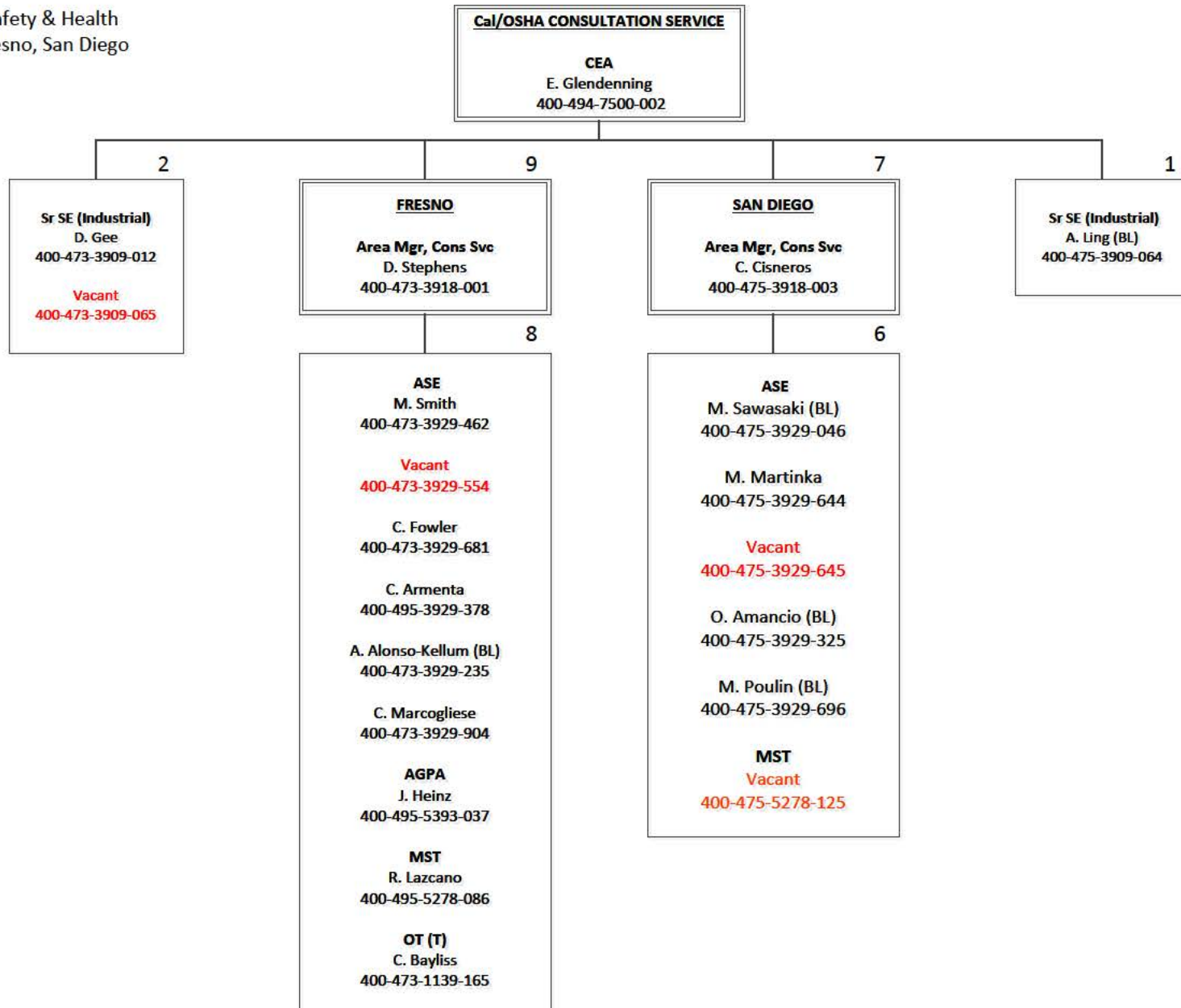
Division of Occupational Safety & Health
 Consultation Services – Santa Ana HQ
 June 30, 2024



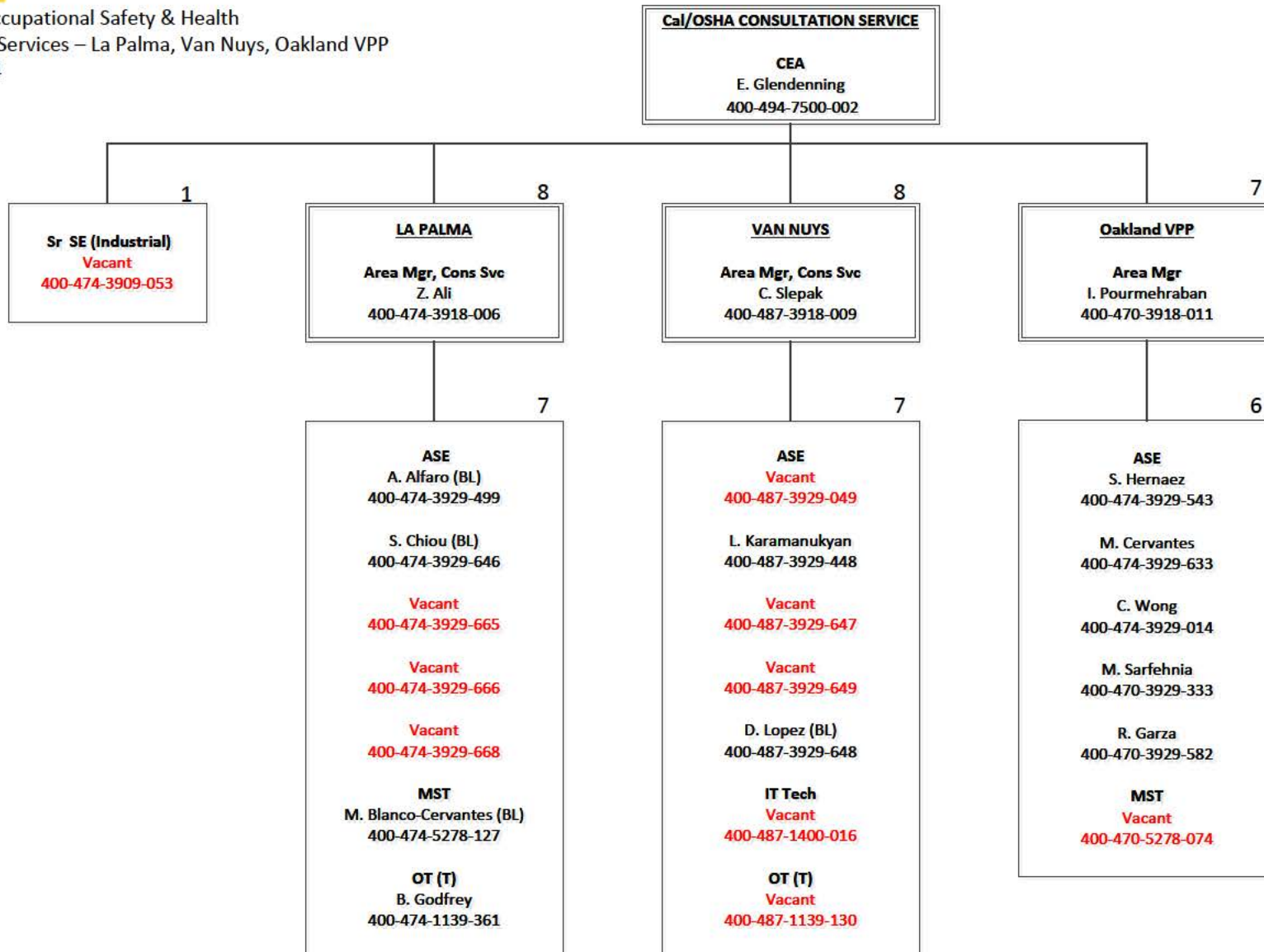
Division of Occupational Safety & Health
 Consultation Services – San Bernardino,
 Oakland, Sacramento
 June 30, 2024



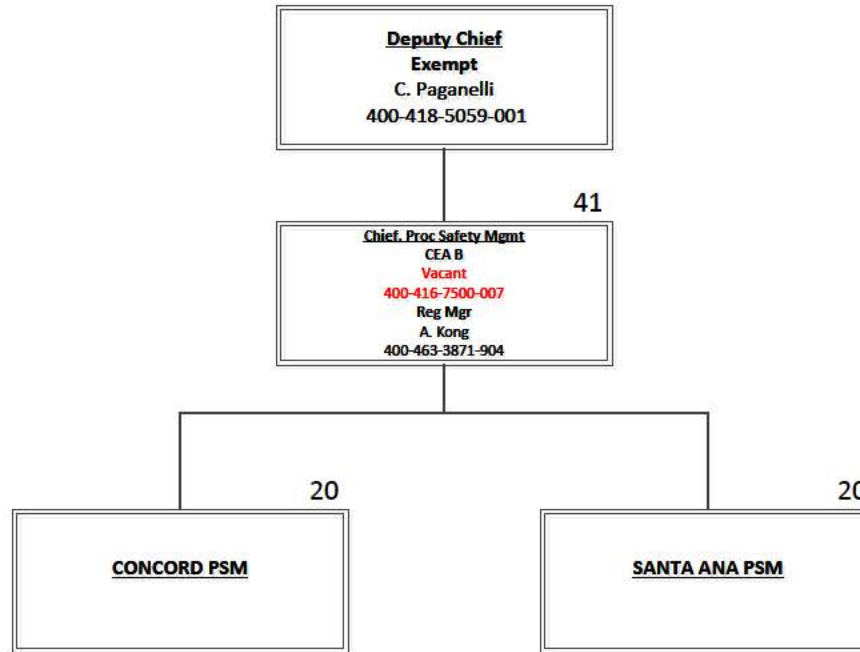
Division of Occupational Safety & Health
 Consultation Services – Fresno, San Diego
 June 30, 2024



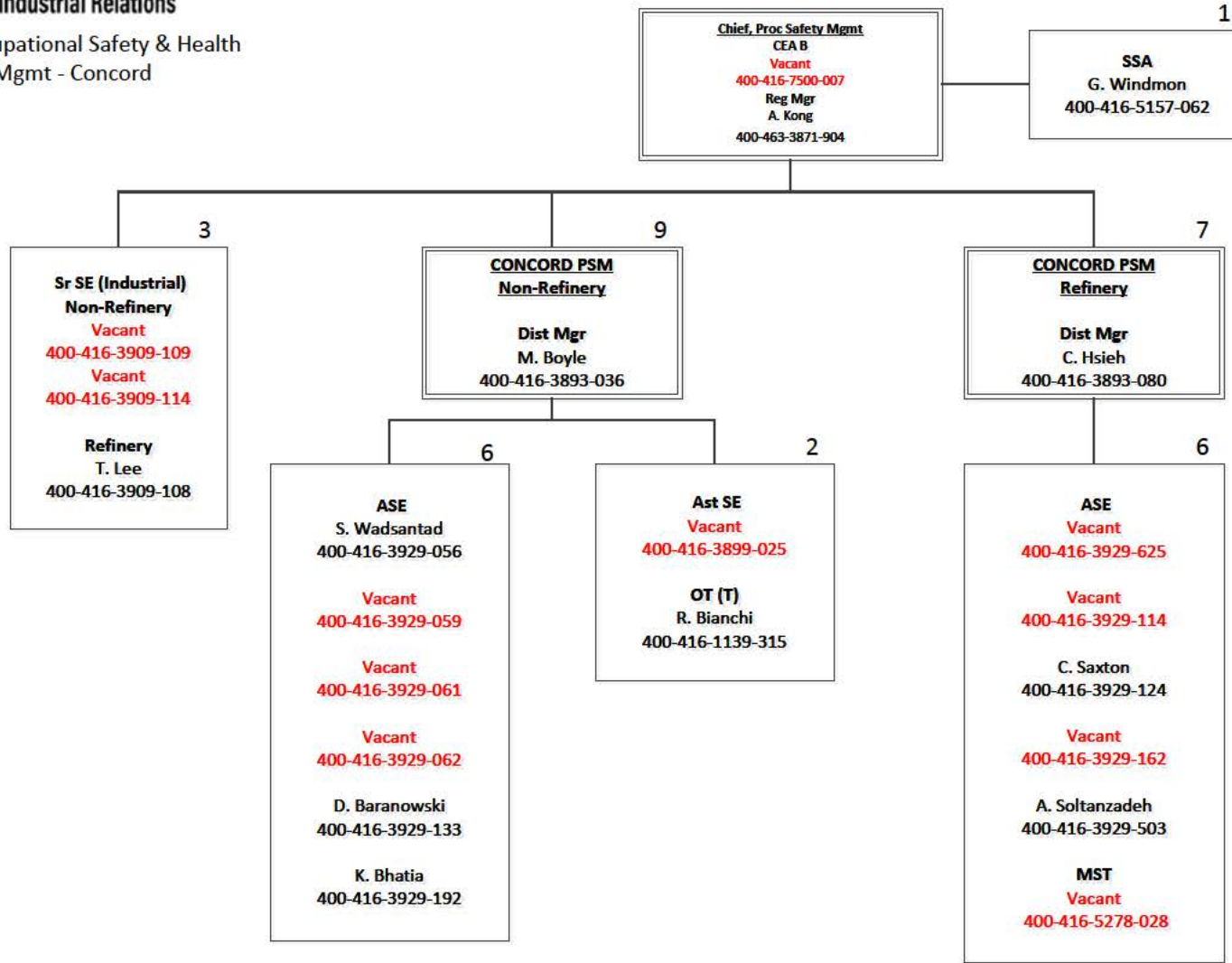
Division of Occupational Safety & Health
 Consultation Services – La Palma, Van Nuys, Oakland VPP
 June 30, 2024

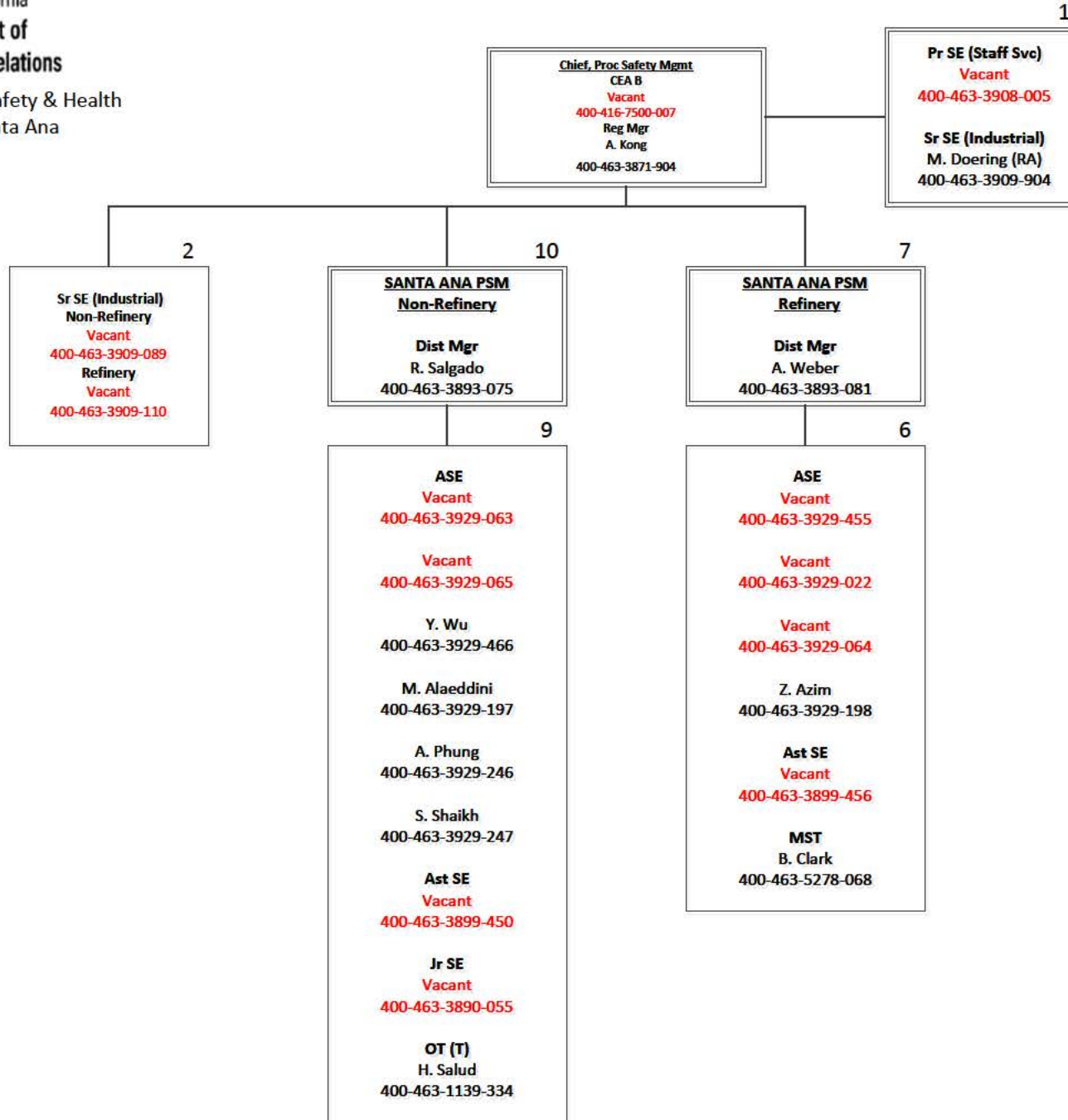


Division of Occupational Safety & Health
Process Safety Mgmt
June 30, 2024



Division of Occupational Safety & Health
 Process Safety Mgmt - Concord
 June 30, 2024





Division of Occupational Safety & Health
 June 30, 2024

Remaining 2021/22 BCP Positions

Offices to be determined for Central Valley Coast, Central Valley Inland, and Southern California

1	1	1	3	1	8	1	6
Reg Mgr	Dist Mgr	Sr SE	ASE	Sr IH	AIH	SSA	OT (T)
Vacant 400-411-3871-011	Vacant 400-461-3893-084	Vacant 400-461-3909-112	Vacant 400-461-3929-206 400-461-3929-207 400-461-3929-208	Vacant 400-403-3852-053	Vacant 400-426-3856-538 400-426-3856-539 400-426-3856-540 400-461-3856-533 400-461-3856-534 400-482-3856-535 400-482-3856-536 400-482-3856-537	Vacant 400-403-5157-079	Vacant 400-403-1139-377 400-426-1139-380 400-426-1139-381 400-461-1139-378 400-461-1139-379 400-482-1139-382