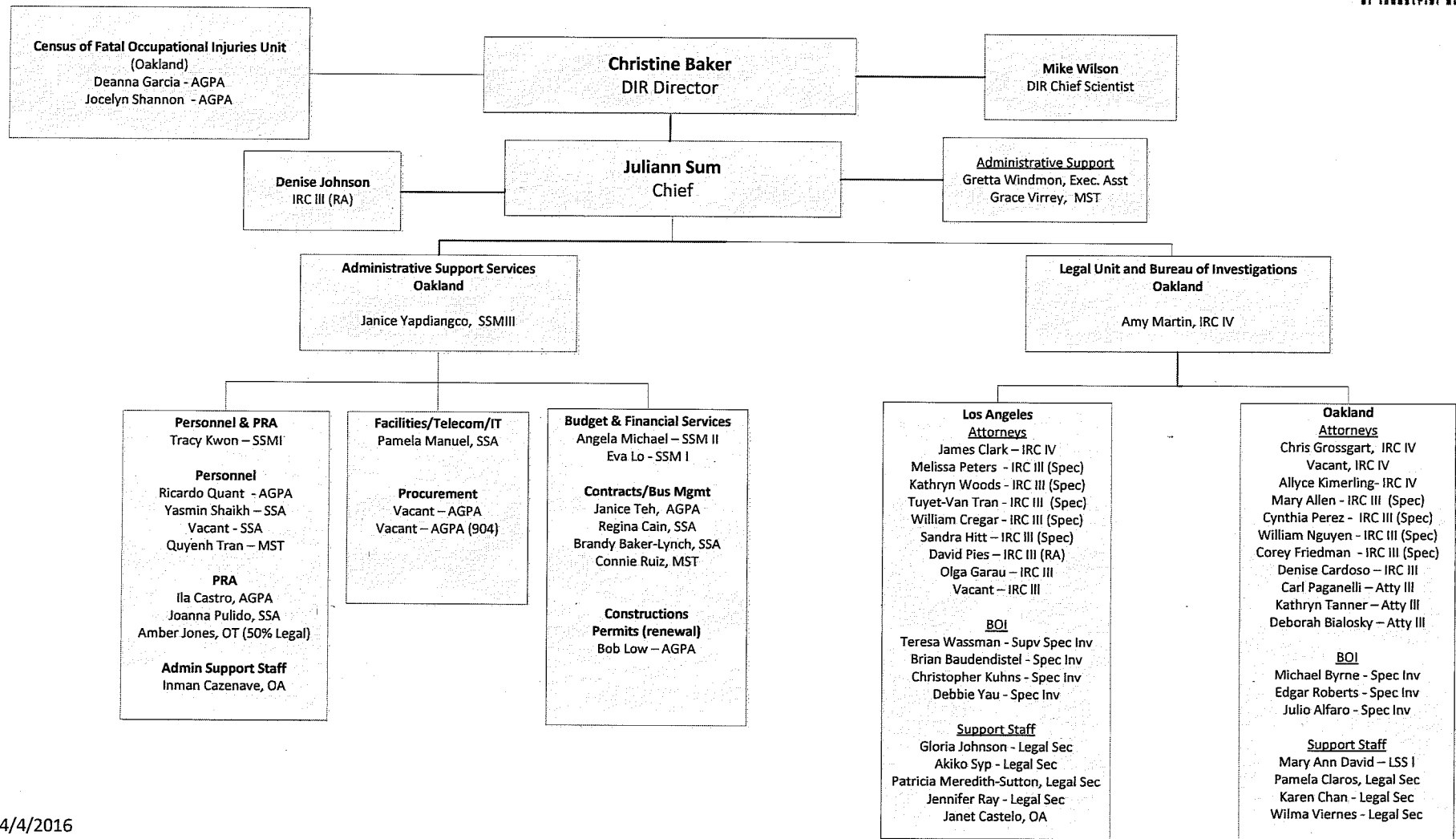
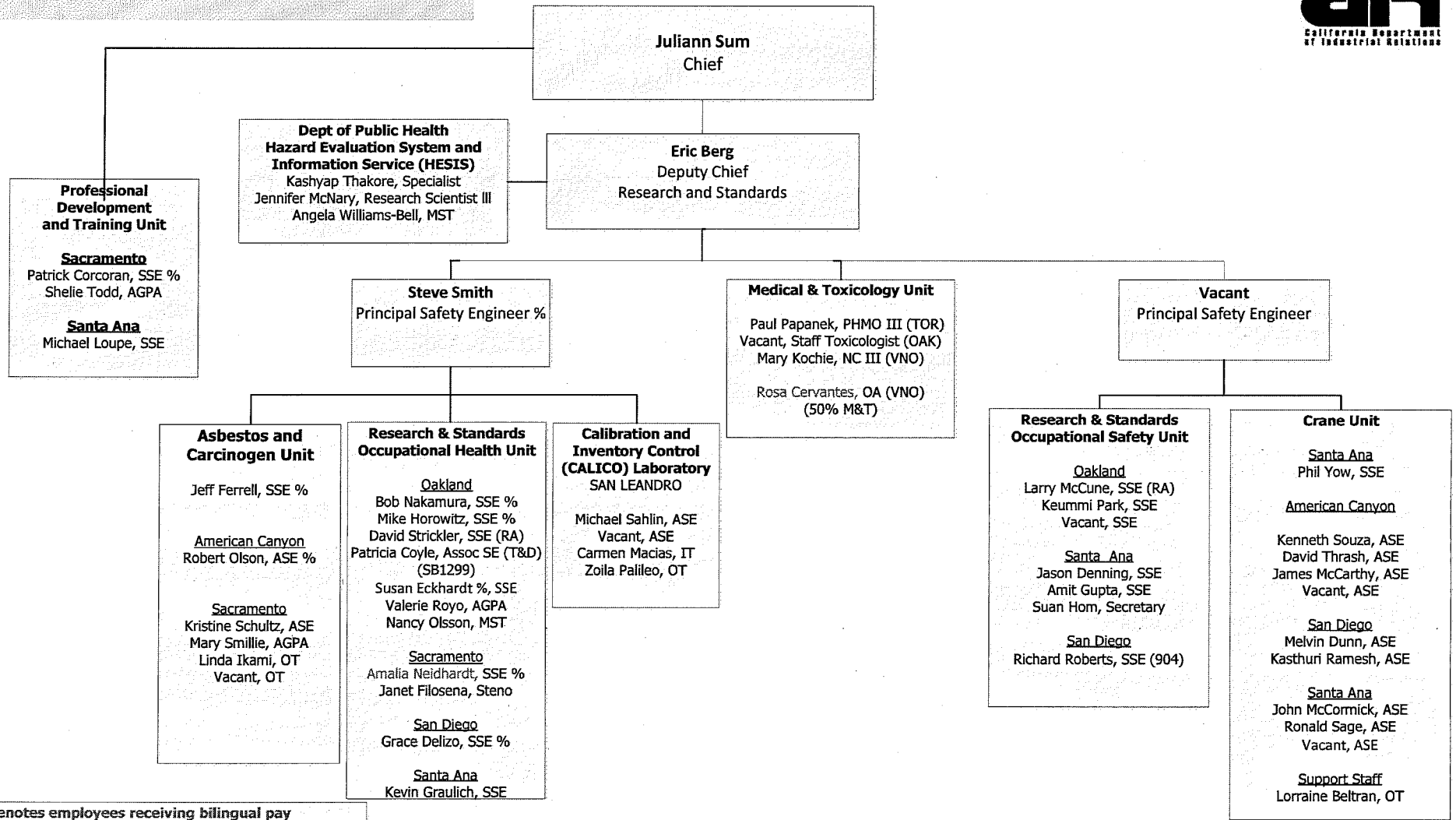


**DIVISION OF OCCUPATIONAL SAFETY AND HEALTH
ADMINISTRATION/LEGAL-BOI**

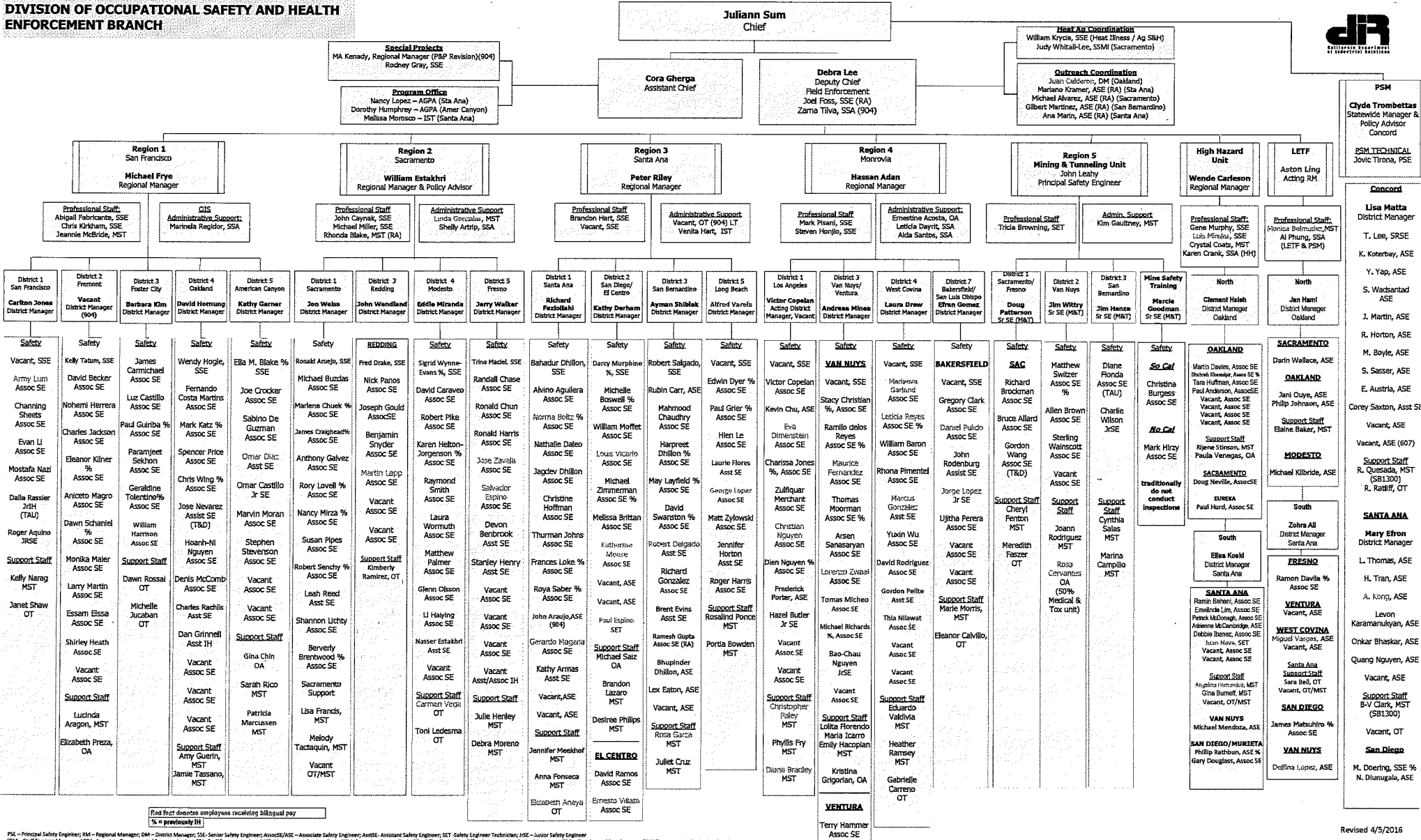


**Division of Occupational Safety and Health
Health, Safety, Medical and Training**



Red font denotes employees receiving bilingual pay
% = formerly IH

**DIVISION OF OCCUPATIONAL SAFETY AND HEALTH
ENFORCEMENT BRANCH**

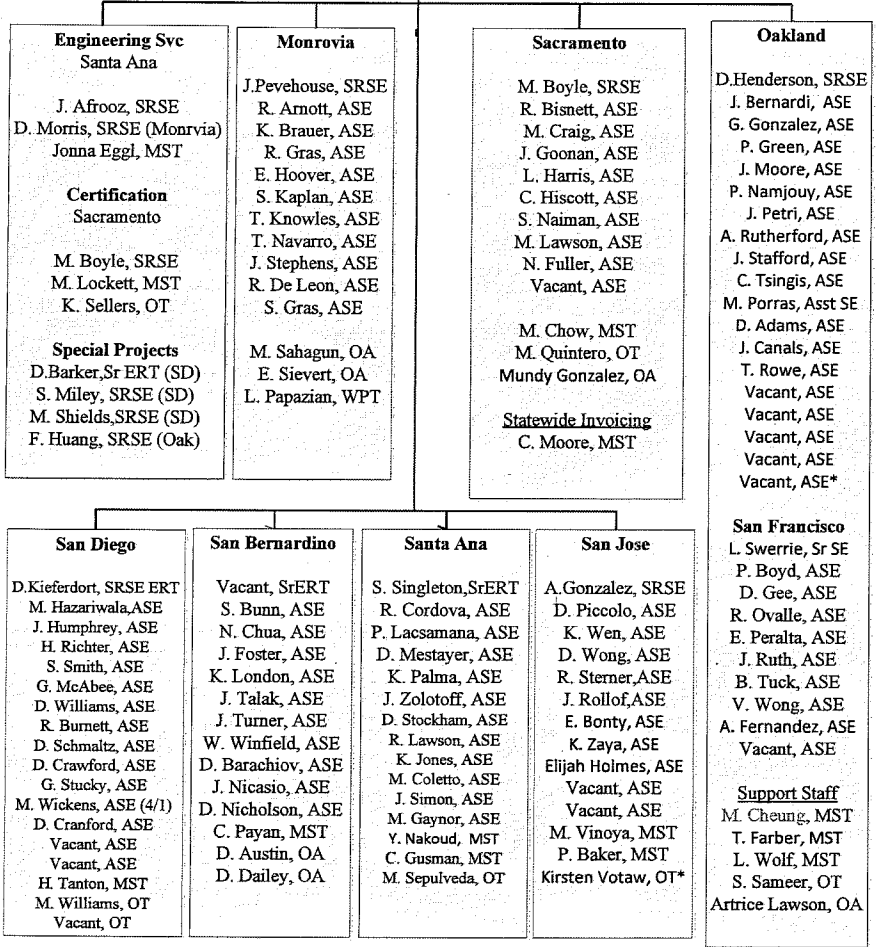


**Division of Occupational Safety and Health
Public Safety / Engineering**

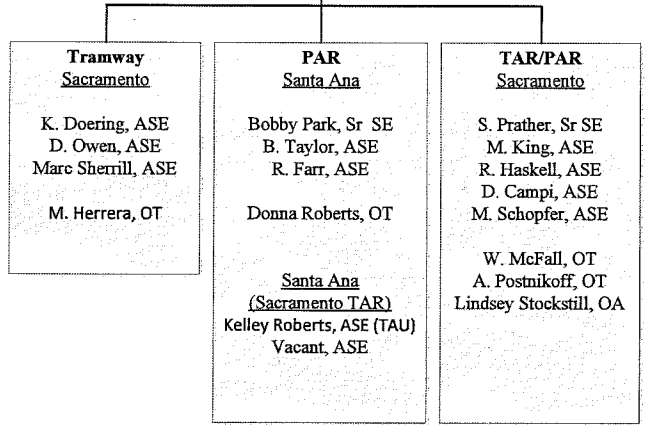


Juliann Sum
Chief

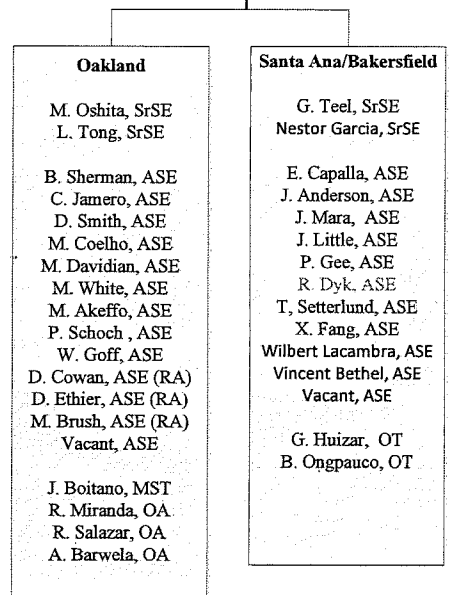
Elevator Unit
Debra Tudor
Principal SE, ERT (San Jose)



Amusement Ride and Tramway Unit
Sacramento
Nancy Medeiros
Regional Manager

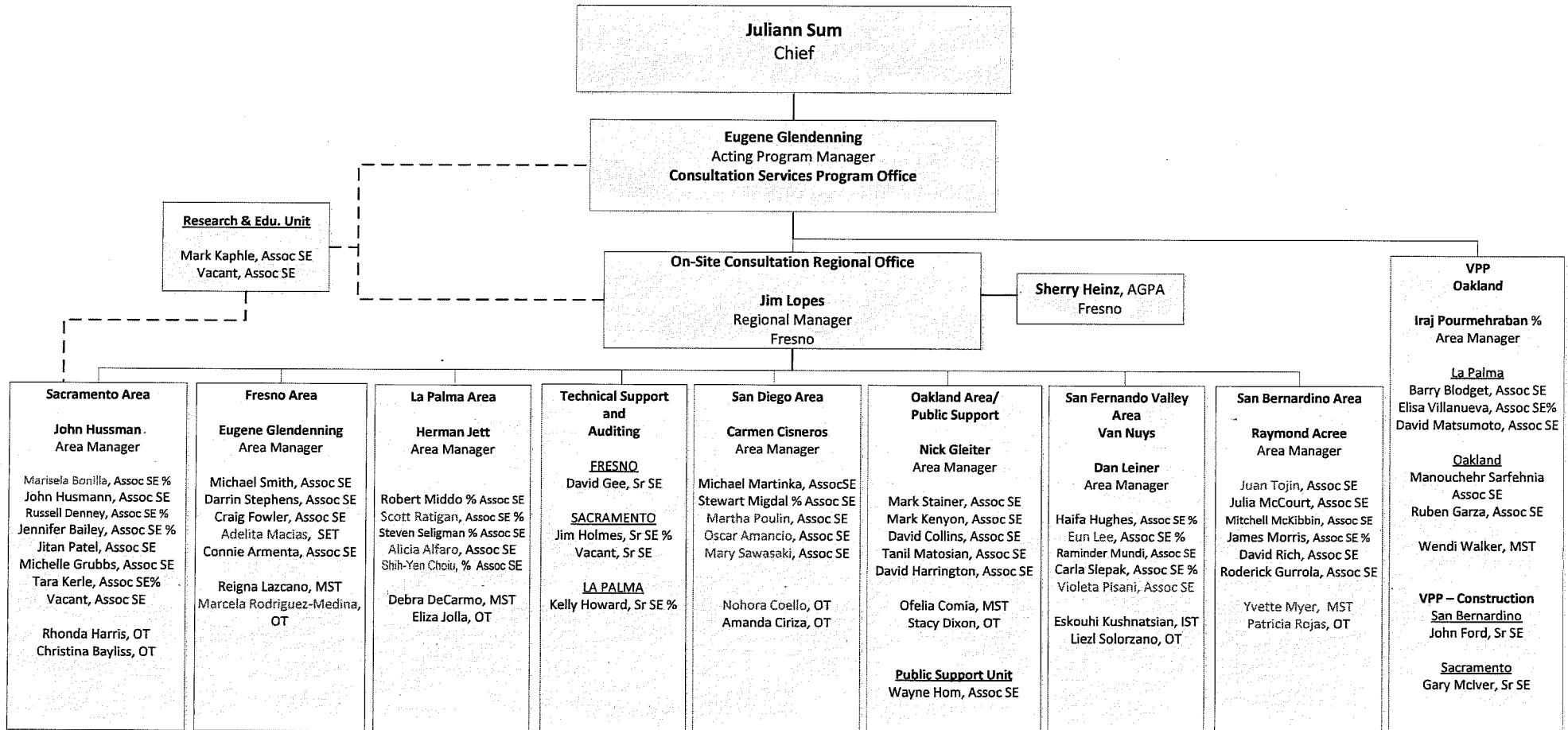


Pressure Vessel Unit
Oakland/Santa Ana/Bakersfield
Don Cook
Principal Safety Engineer



* denotes half time
Red font denotes employees receiving bilingual pay
Revised 4/4/2016

**Division of Occupational Safety and Health
Consultation Services Branch**



Red font denotes employees receiving bilingual pay
% = formerly IH

Revised 4/4/2016