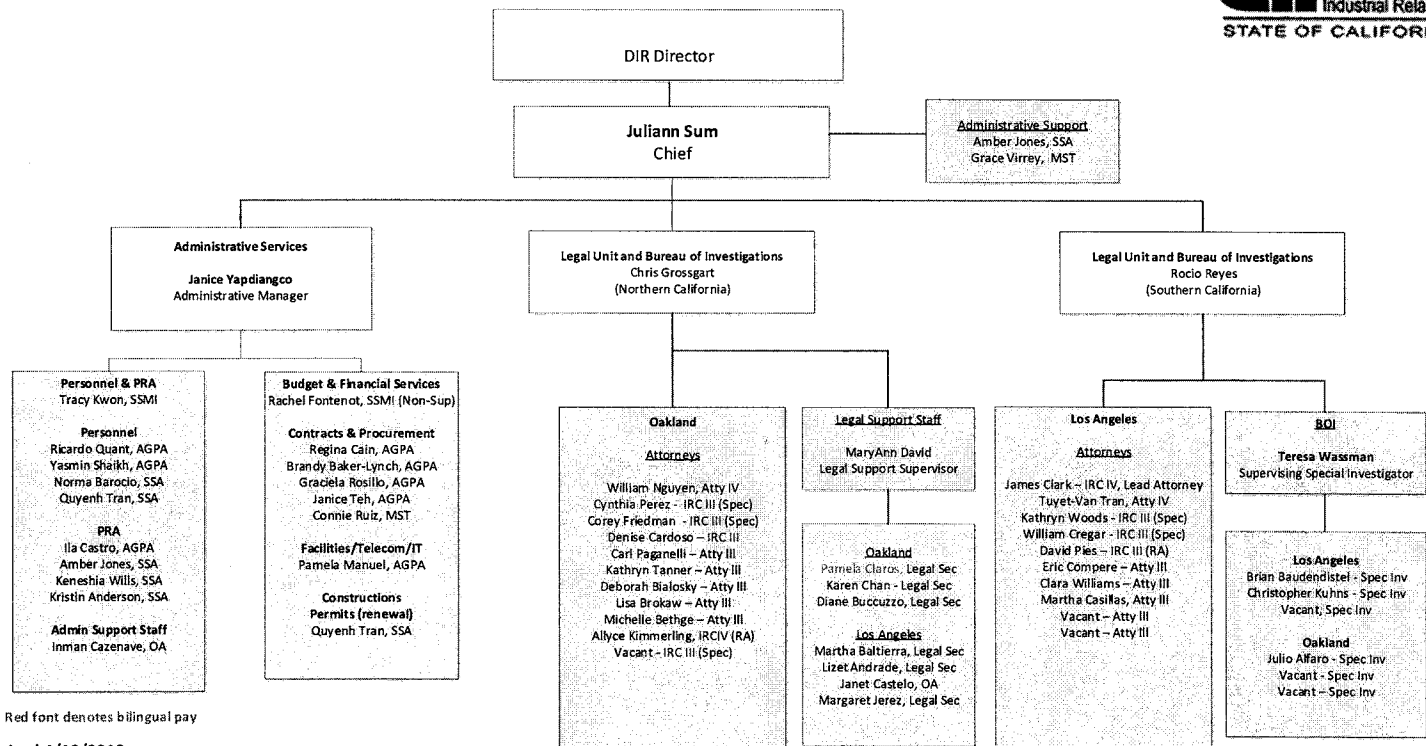


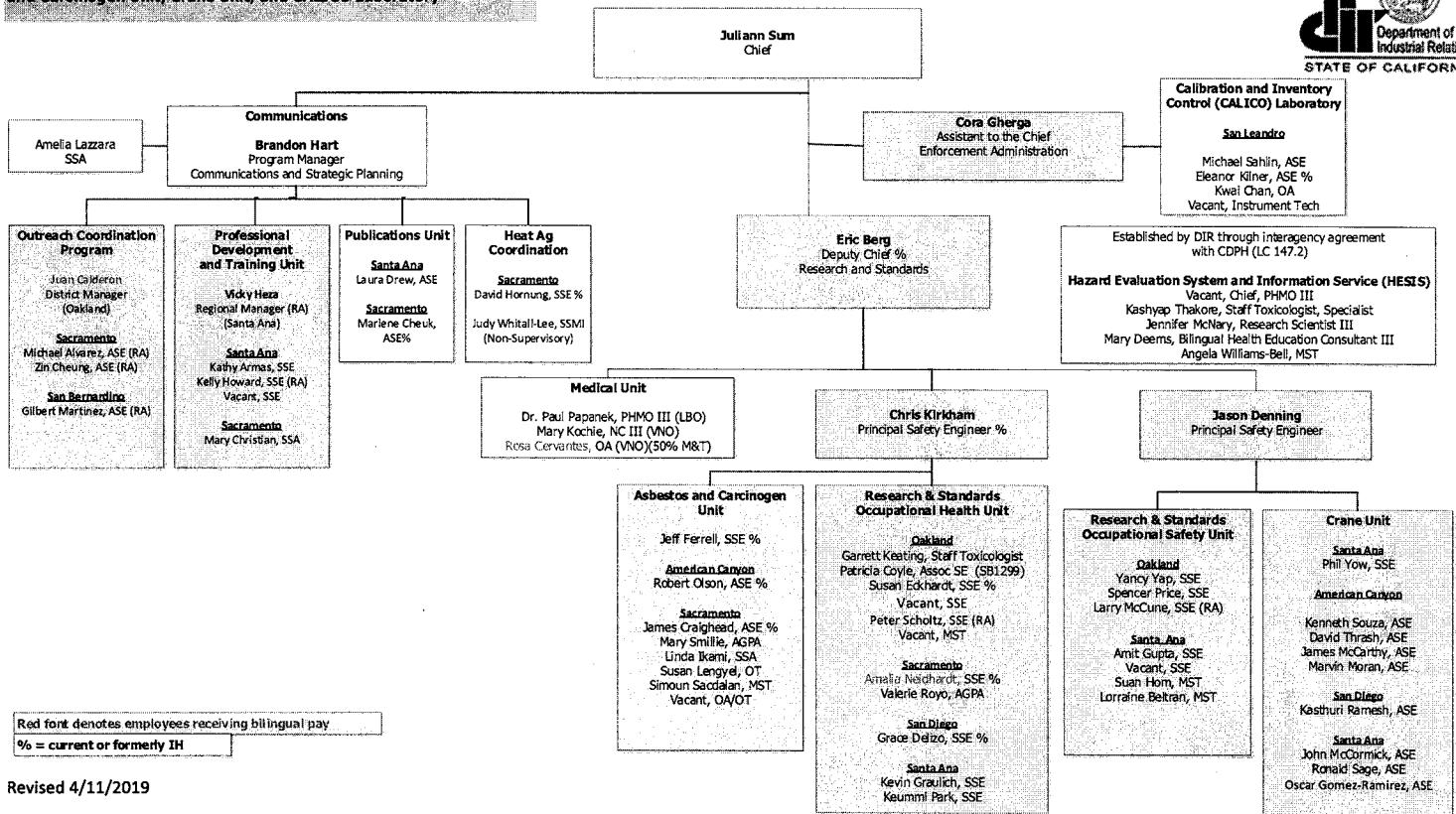
**DIVISION OF OCCUPATIONAL SAFETY AND HEALTH
ADMINISTRATIVE SERVICES, LEGAL UNIT, AND BUREAU OF INVESTIGATIONS**



Red font denotes bilingual pay

Revised 4/10/2019

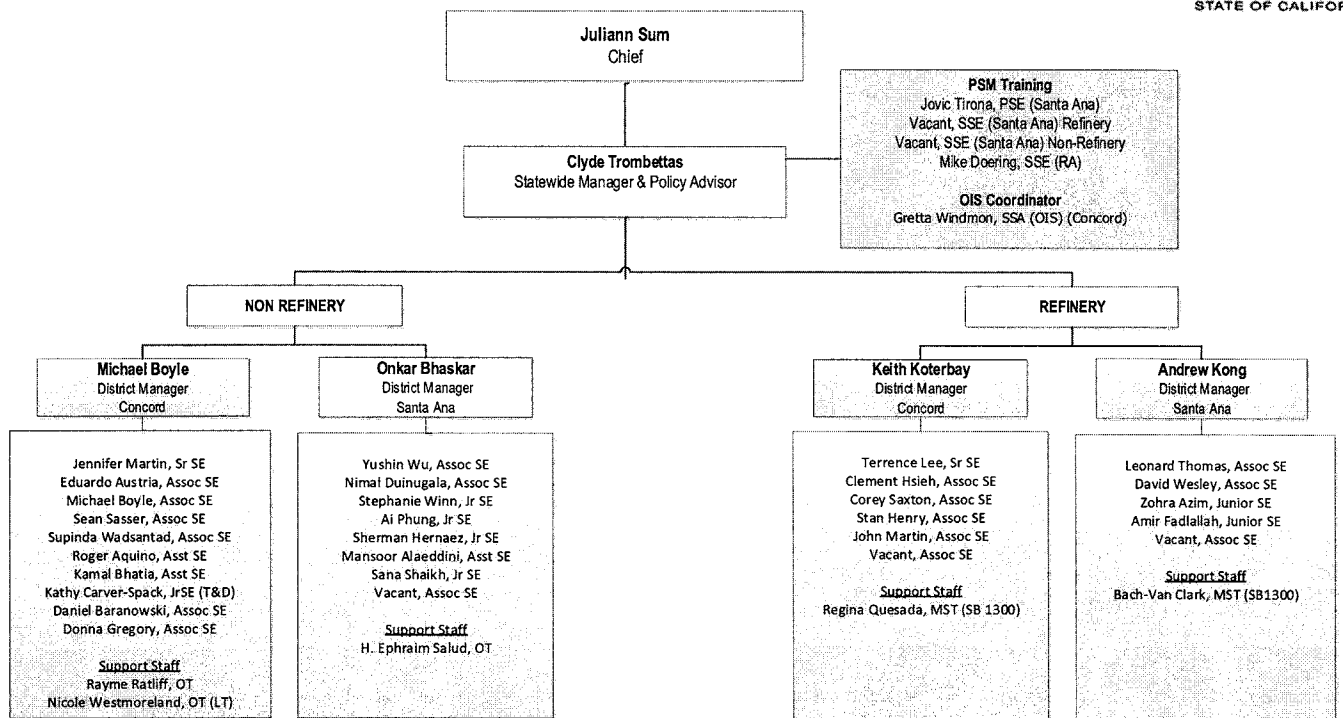
**Division of Occupational Safety and Health
Communications, Research and Standards, Medical Unit, Asbestos
and Carcinogen Unit, Crane Unit, and CALICO Laboratory**



Red font denotes employees receiving bilingual pay
% = current or formerly IH

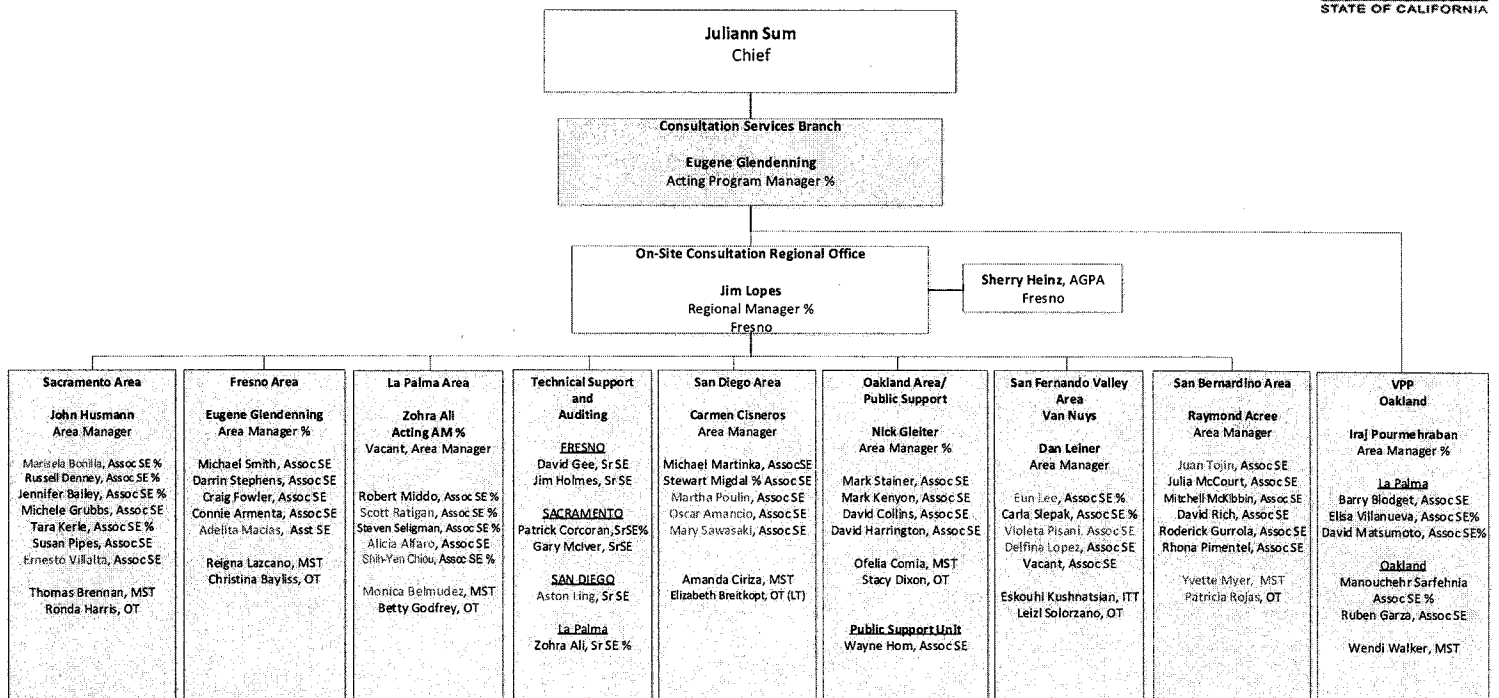
Revised 4/11/2019

**DIVISION OF OCCUPATIONAL SAFETY AND HEALTH
ENFORCEMENT BRANCH - PROCESS SAFETY MANAGEMENT UNIT**



Red font denotes employees receiving bilingual pay

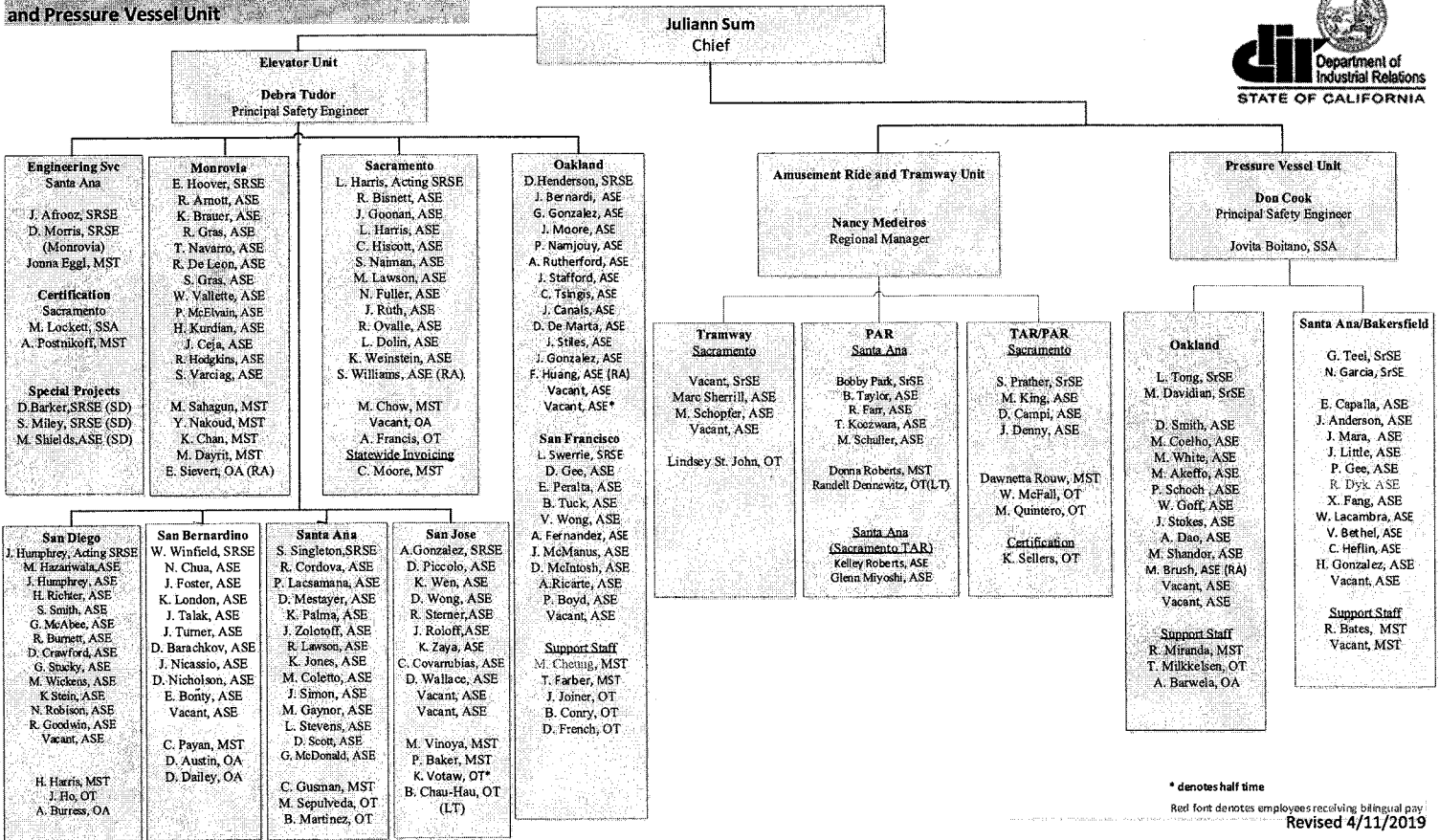
**Division of Occupational Safety and Health
Consultation Services Branch**



Red font denotes employees receiving bilingual pay
% = current or formerly IH

Revised 4/11/2019

**Division of Occupational Safety and Health
Elevator Unit, Amusement Ride and Tramway Unit,
and Pressure Vessel Unit**



* denotes half time
Red font denotes employees receiving bilingual pay
Revised 4/11/2019