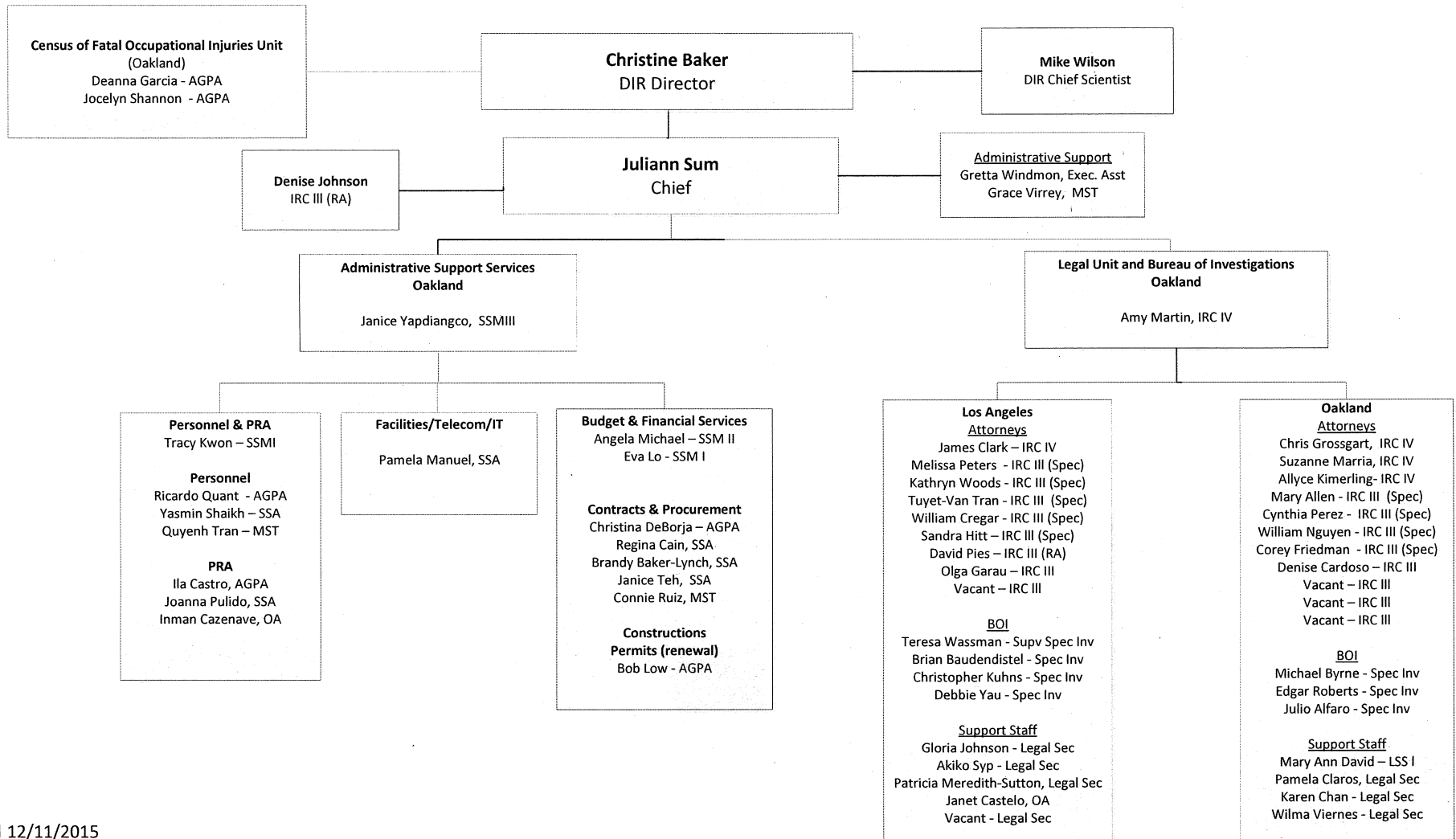
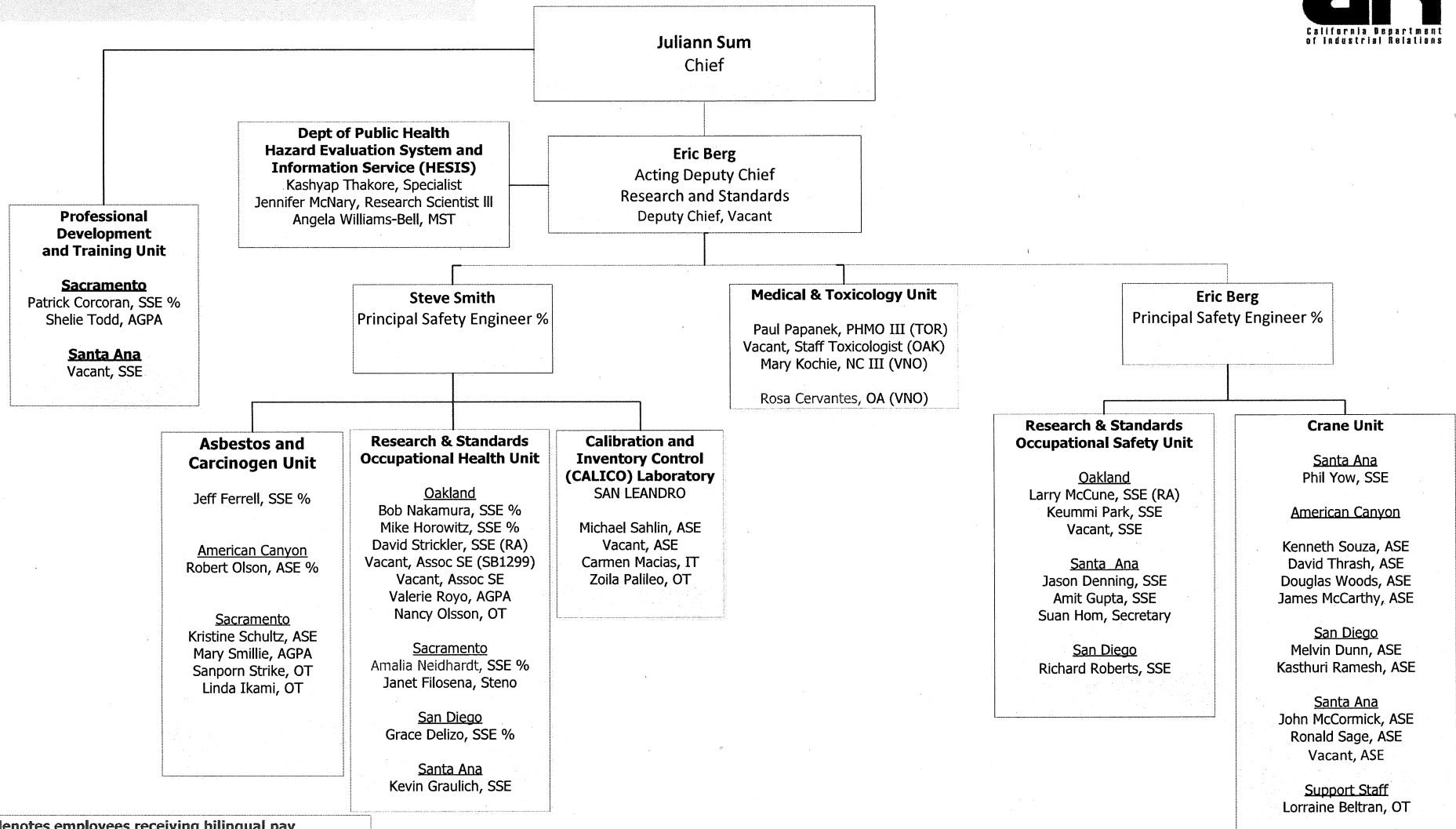


**DIVISION OF OCCUPATIONAL SAFETY AND HEALTH
ADMINISTRATION/LEGAL-BOI**

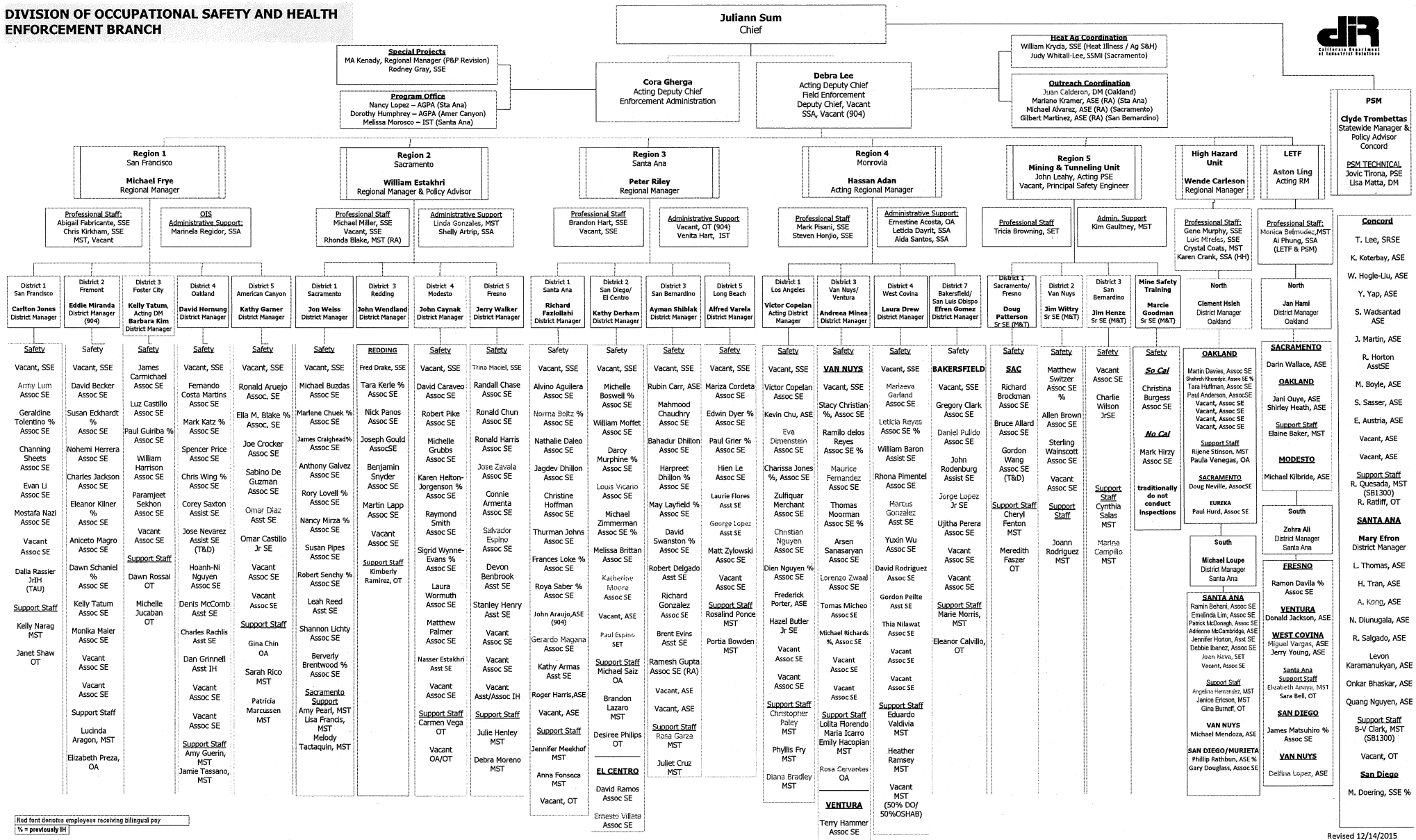


**Division of Occupational Safety and Health
Health, Safety, Medical and Training**



Red font denotes employees receiving bilingual pay
% = formerly IH

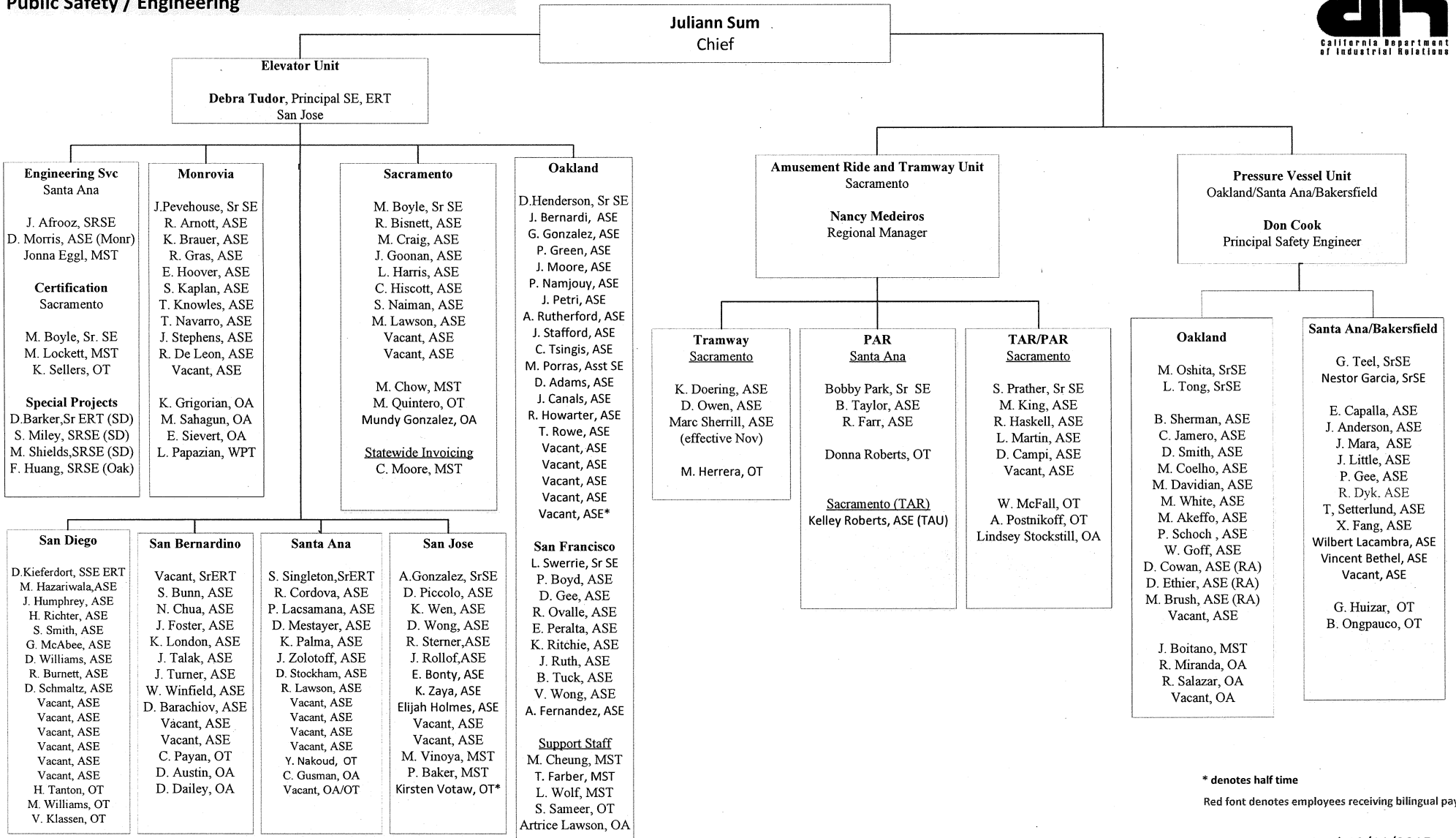
**DIVISION OF OCCUPATIONAL SAFETY AND HEALTH
ENFORCEMENT BRANCH**



Red font denotes employees receiving bilingual pay
% = previously HI

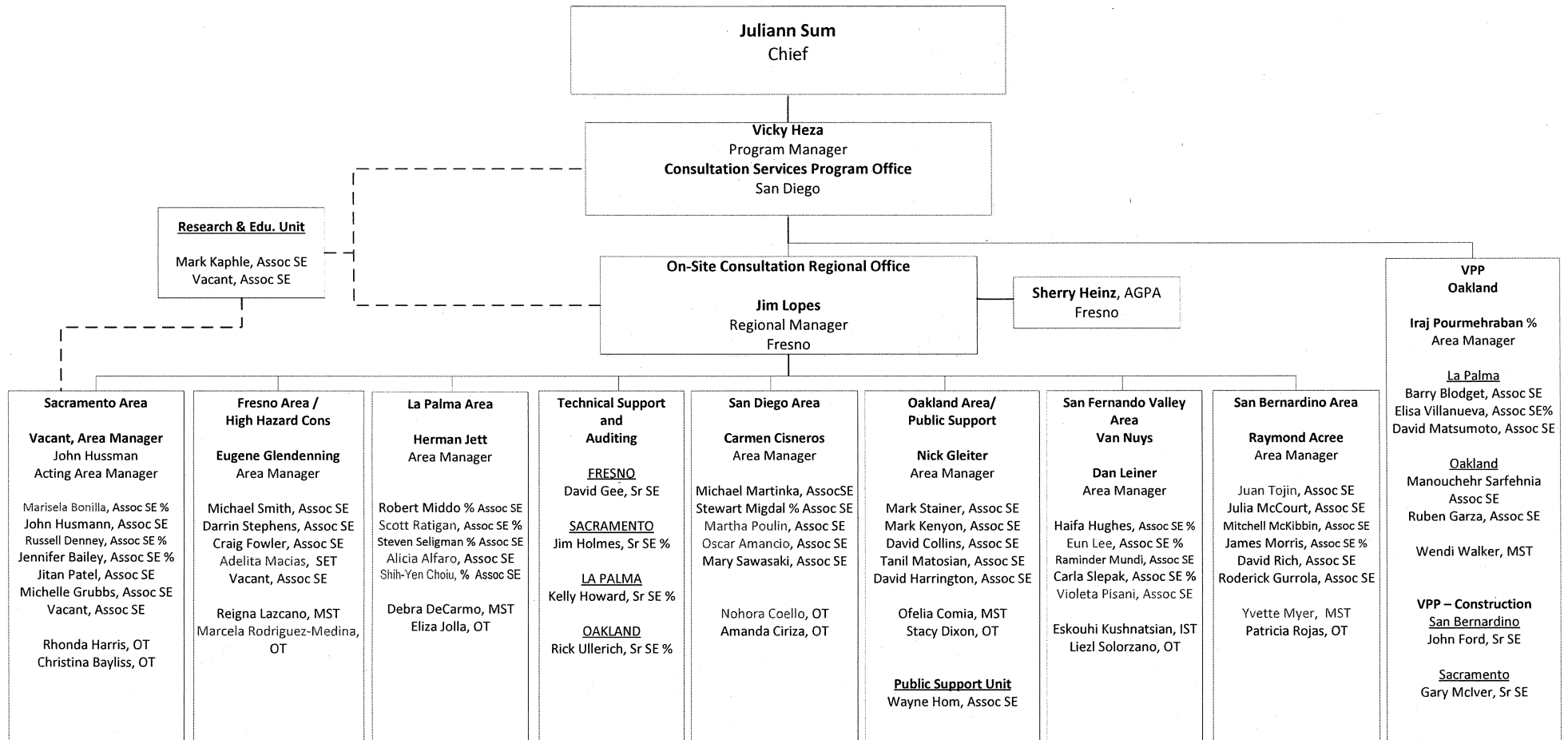
PSE – Principal Safety Engineer; RM – Regional Manager; DM – District Manager; SSE – Senior Safety Engineer; Assoc/ASE – Associate Safety Engineer; ASstSE – Assistant Safety Engineer; SET – Safety Engineer Technician; JSE – Junior Safety Engineer; SSM – Staff Services Manager; AGPA – Associate General Program Analyst; SSA – Staff Services Analyst; MST – Management Services Tech; IST – Information System Tech; OT – Office Tech; OA – Office Assistant; RA – Retired Annuitant; T&D – Training and Development; TAU – Temporary Authorization Appointment

**Division of Occupational Safety and Health
Public Safety / Engineering**



* denotes half time
Red font denotes employees receiving bilingual pay

**Division of Occupational Safety and Health
Consultation Services Branch**



Red font denotes employees receiving bilingual pay
% = formerly IH

Revised 12/11/2015