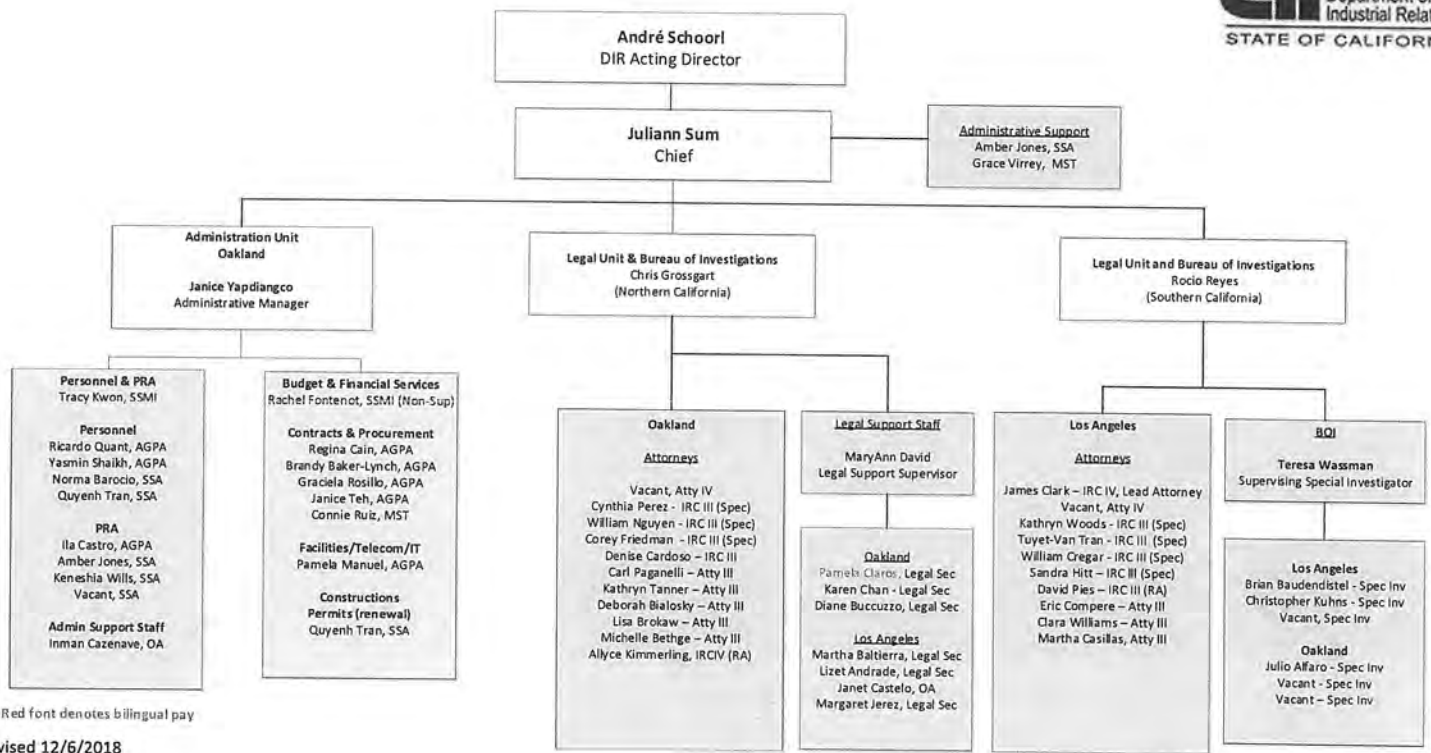


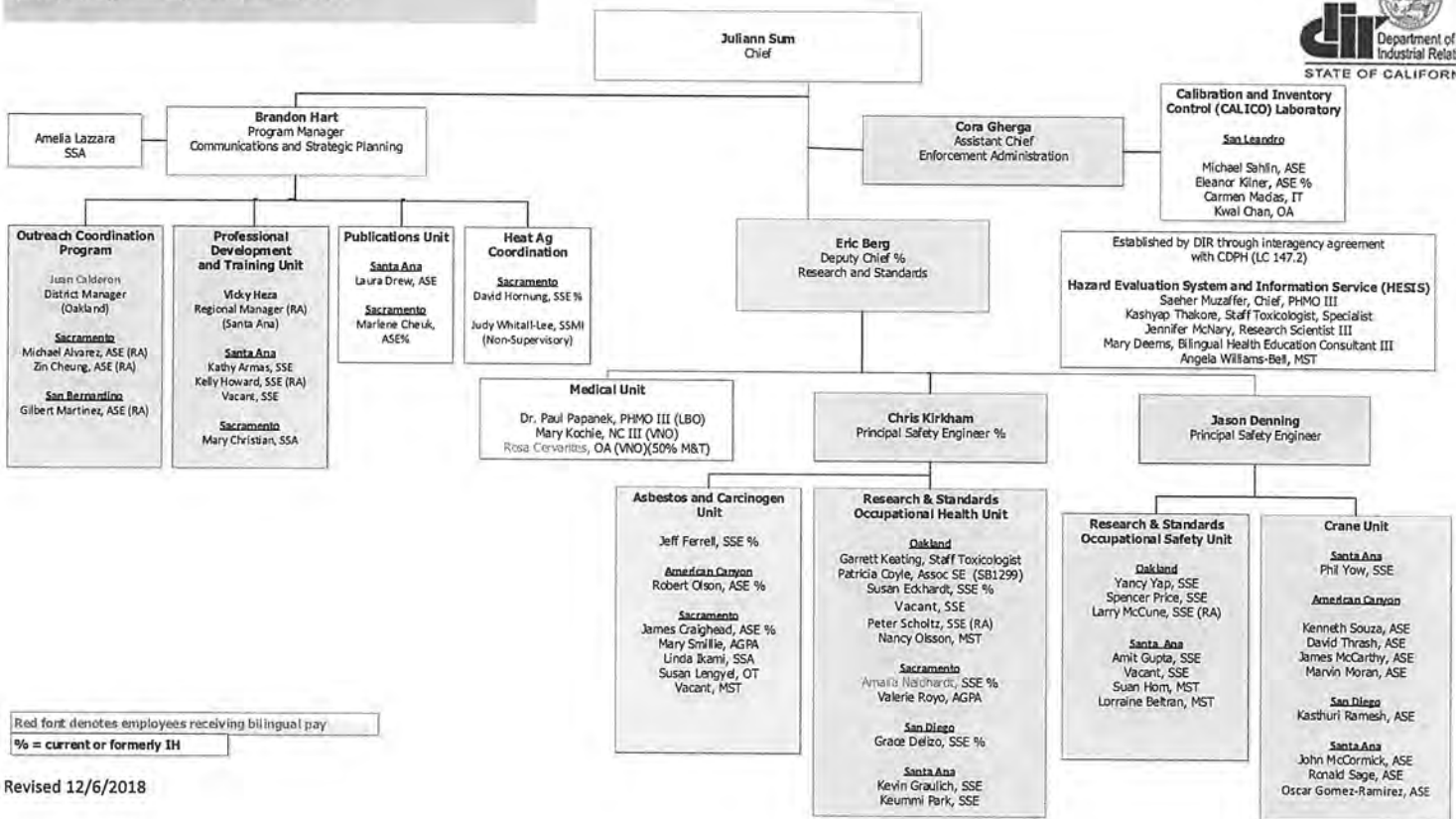
**DIVISION OF OCCUPATIONAL SAFETY AND HEALTH  
ADMINISTRATION/LEGAL-BOI**



Red font denotes bilingual pay

Revised 12/6/2018

**Division of Occupational Safety and Health  
Health, Safety, Medical, and Communications**

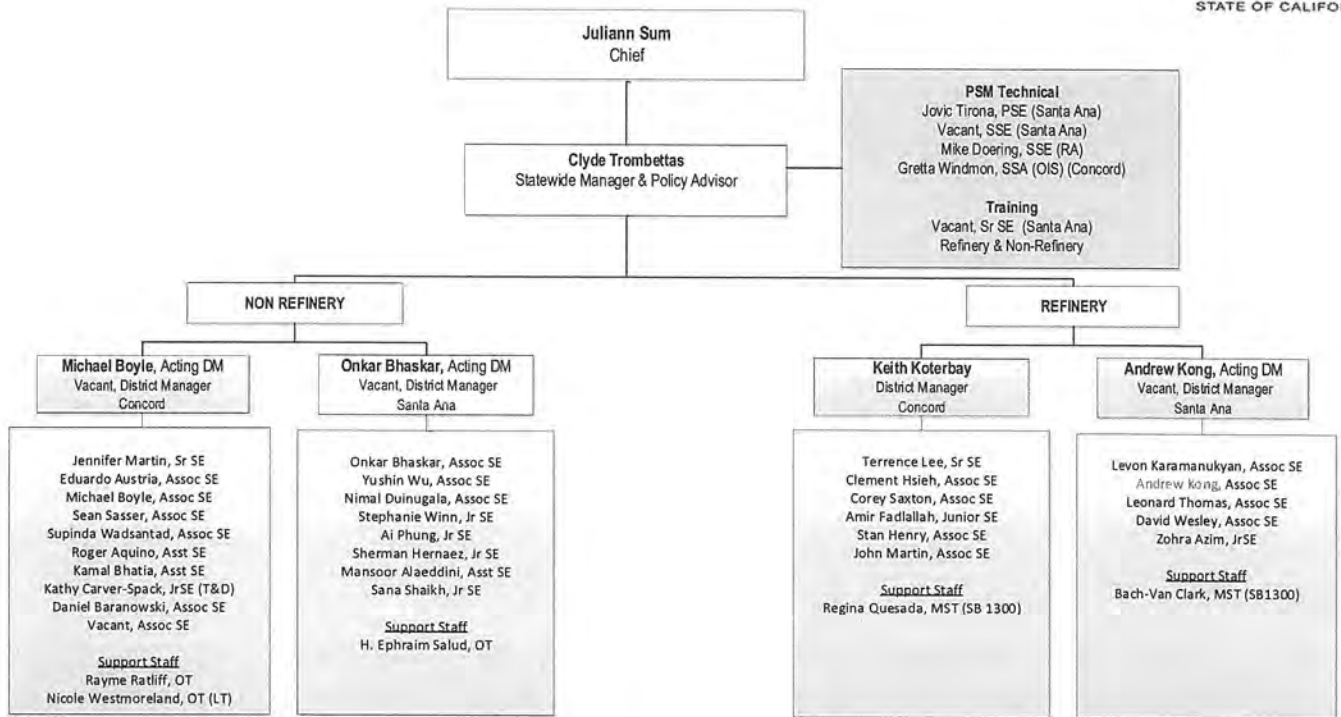


Red font denotes employees receiving bilingual pay  
% = current or formerly IH

Revised 12/6/2018

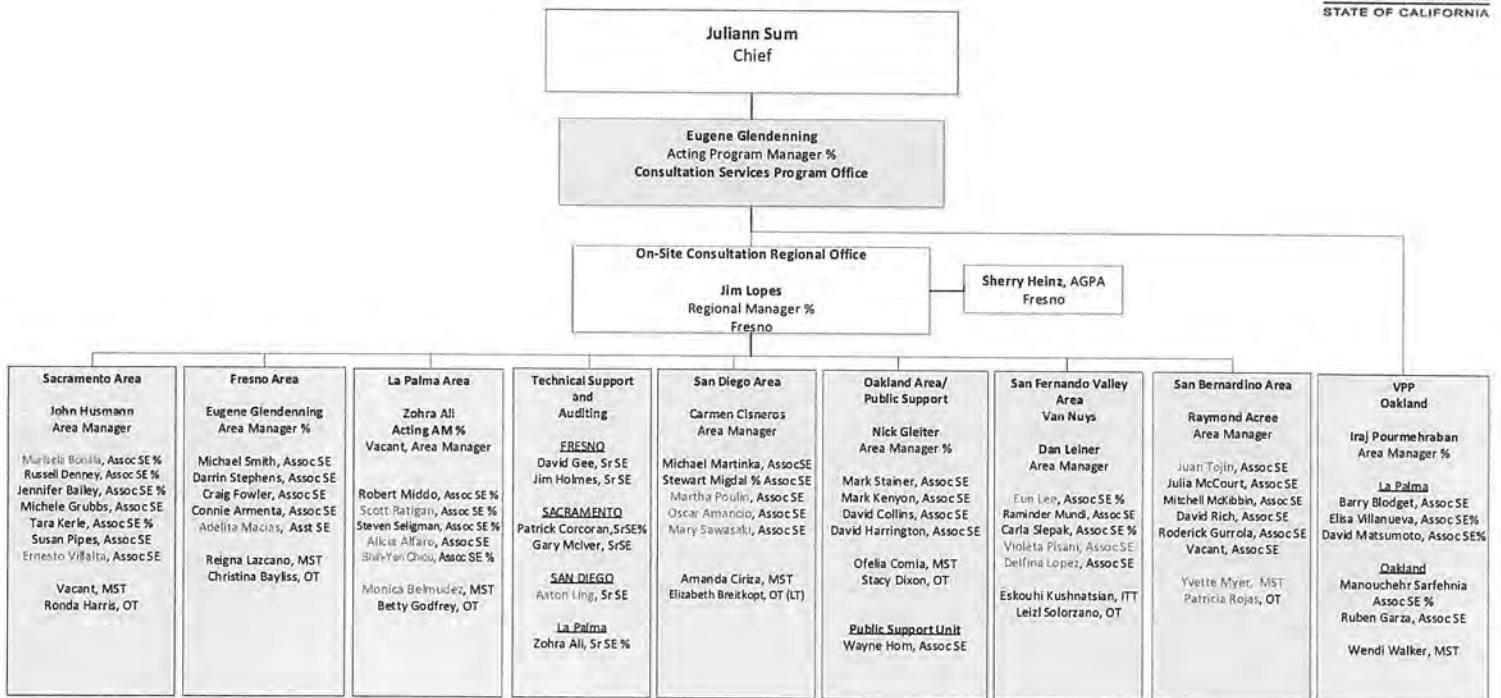


**DIVISION OF OCCUPATIONAL SAFETY AND HEALTH  
ENFORCEMENT BRANCH - PROCESS SAFETY MANAGEMENT (PSM) UNIT**



Red font denotes employees receiving bilingual pay

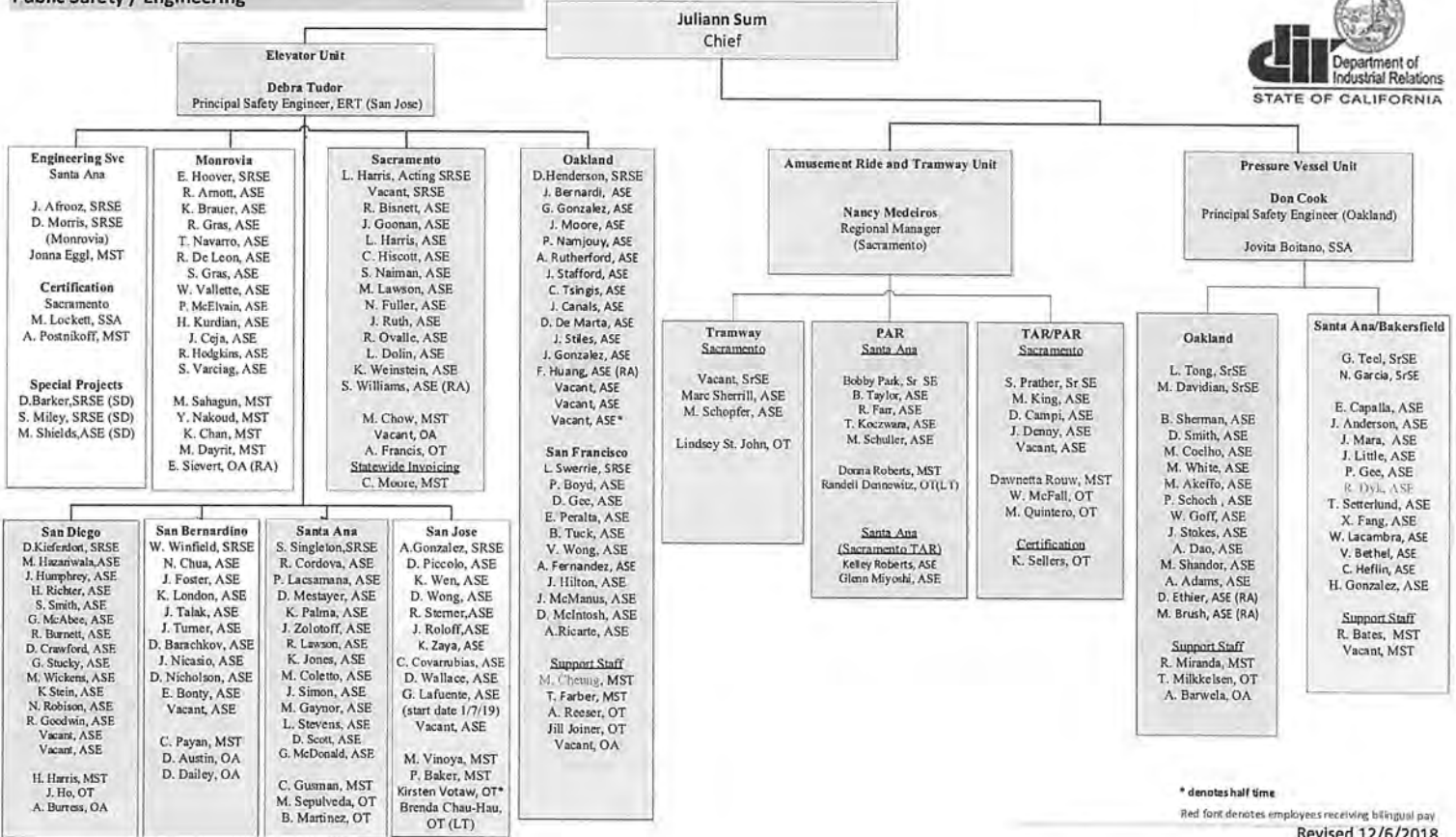
**Division of Occupational Safety and Health  
Consultation Services Branch**



Red font denotes employees receiving bilingual pay  
% = current or formerly IH

Revised 12/6/2018

**Division of Occupational Safety and Health  
Public Safety / Engineering**



\* denotes half time  
Red font denotes employees receiving bilingual pay  
Revised 12/6/2018