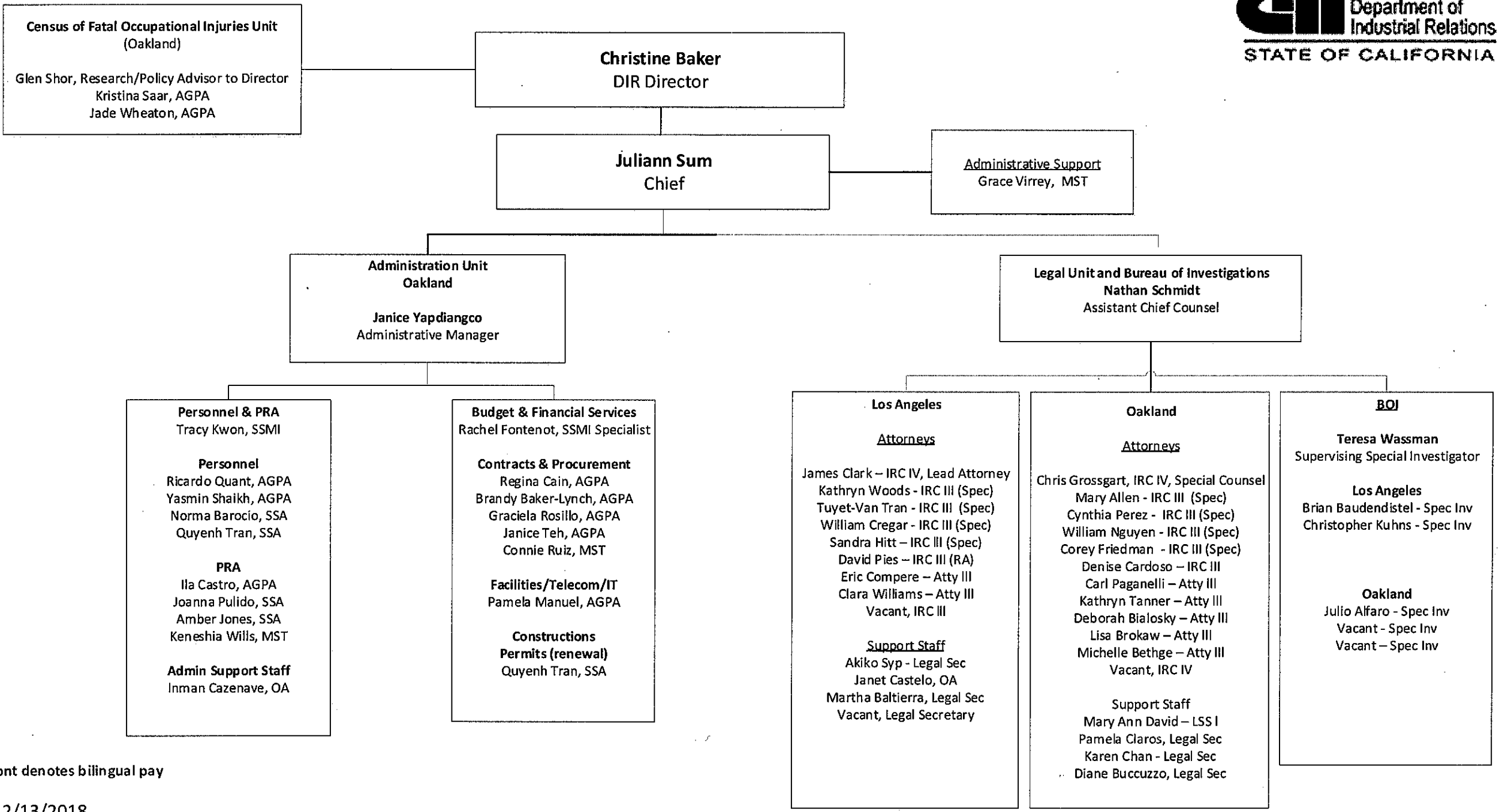
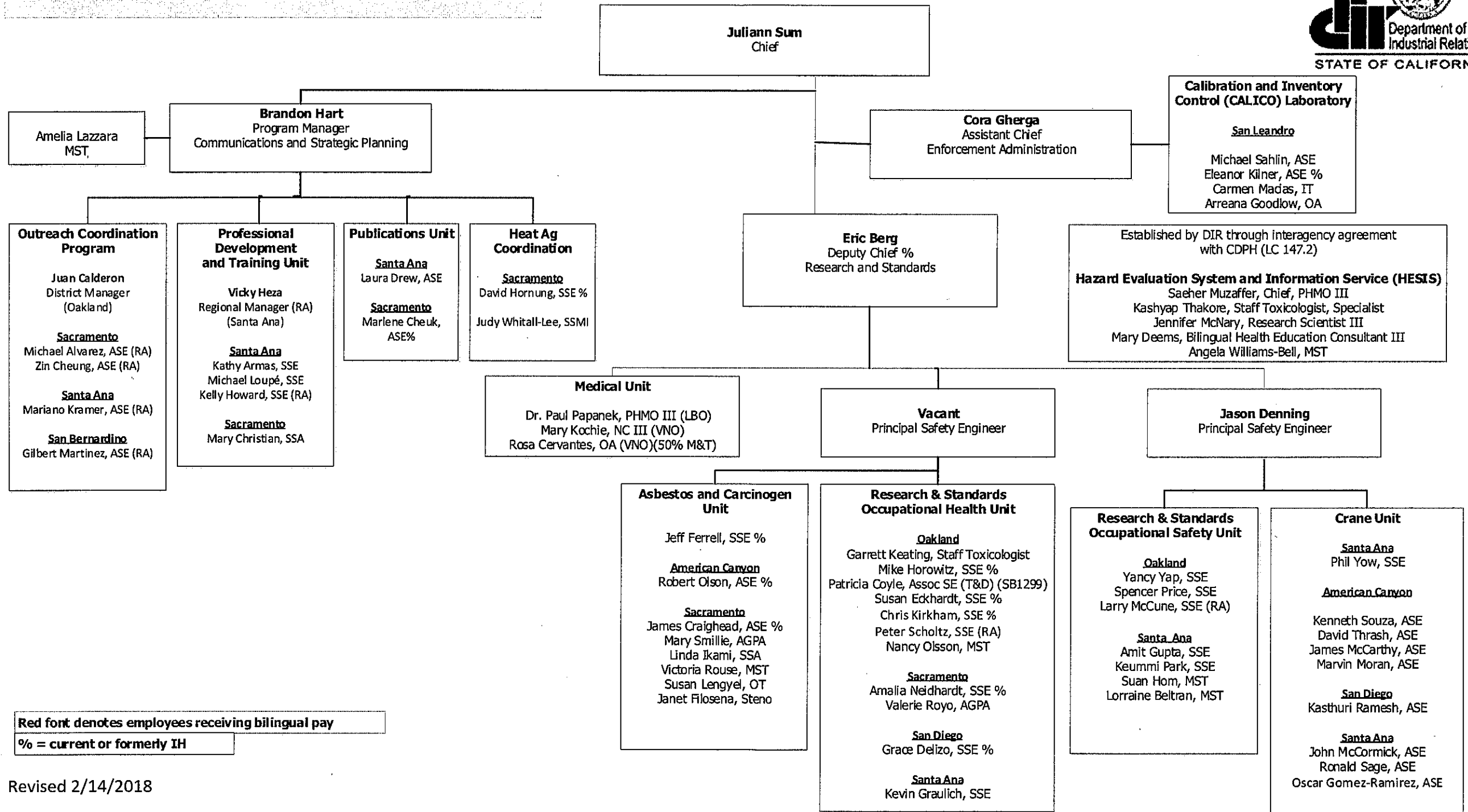


**DIVISION OF OCCUPATIONAL SAFETY AND HEALTH
ADMINISTRATION/LEGAL-BOI**



Red font denotes bilingual pay

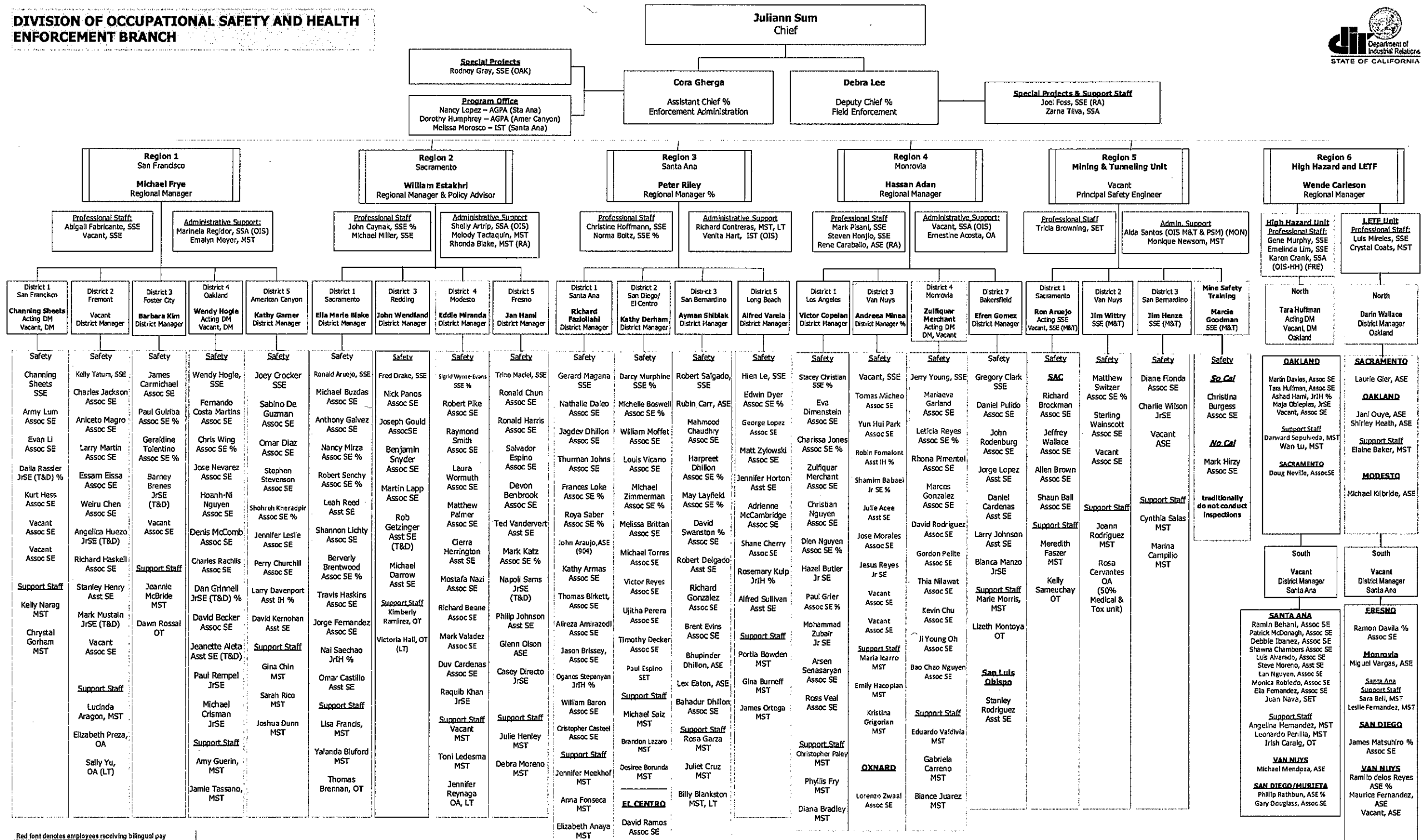
**Division of Occupational Safety and Health
Health, Safety, Medical, and Communications**



Red font denotes employees receiving bilingual pay

% = current or formerly IH

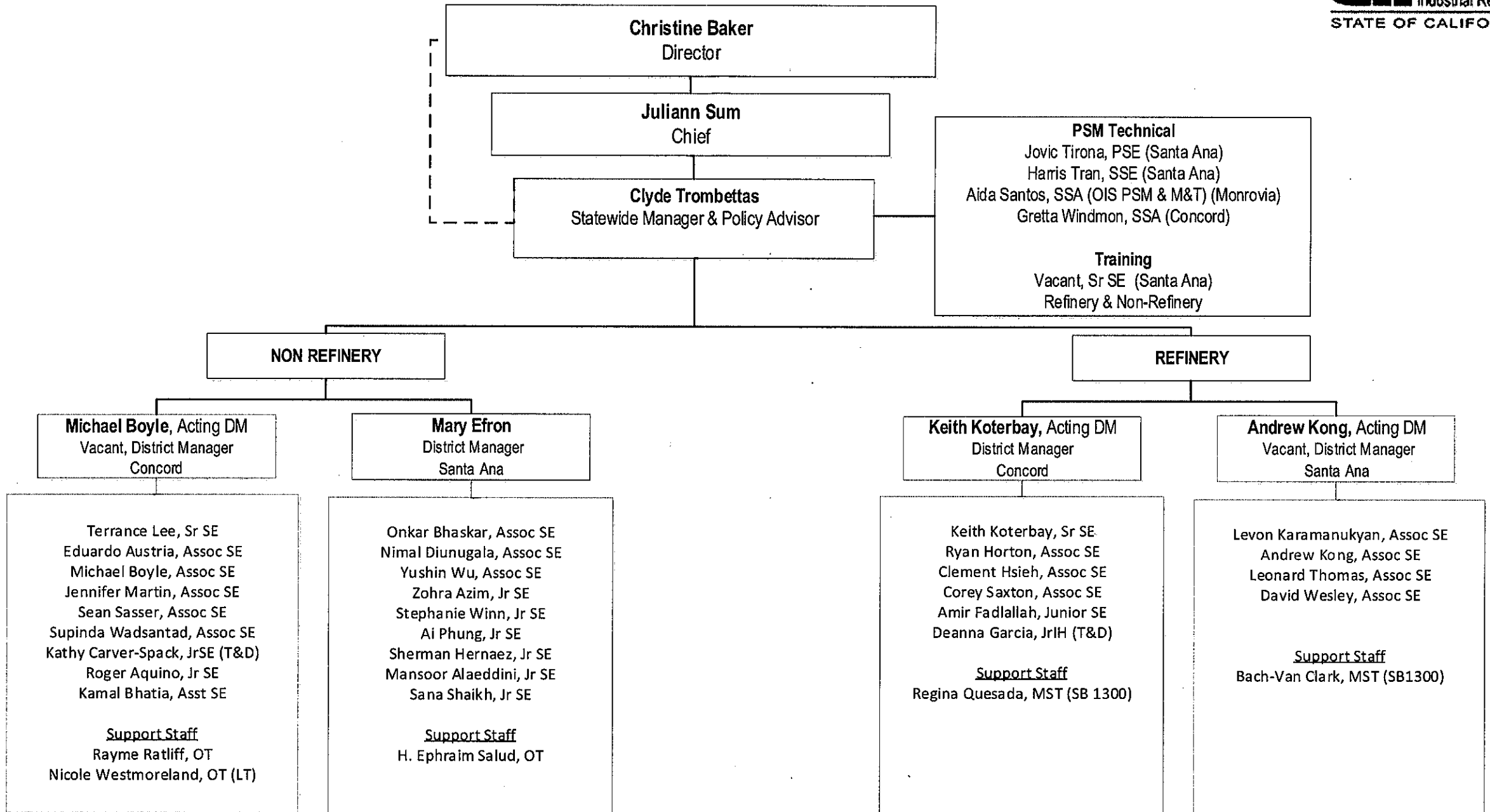
**DIVISION OF OCCUPATIONAL SAFETY AND HEALTH
ENFORCEMENT BRANCH**



Red font denotes employees receiving bilingual pay
% = current or previously IH

PSE – Principal Safety Engineer; RM – Regional Manager; DM – District Manager; SSE – Senior Safety Engineer; AssocSE/ASE – Associate Safety Engineer; ASSTE – Assistant Safety Engineer; SET – Safety Engineer Technician; JSE – Junior Safety Engineer
SSM – Staff Services Manager; AGPA – Associate Governmental Program Analyst; SSA – Staff Services Analyst; MST – Management Services Tech; IST – Information System Tech; OT – Office Tech; OA – Office Assistant; RA – Retired Annuitant; T&D – Training and Development; TAU – Temporary Authorization Appointment

**DIVISION OF OCCUPATIONAL SAFETY AND HEALTH
ENFORCEMENT BRANCH - PROCESS SAFETY MANAGEMENT (PSM) UNIT**



Red font denotes employees receiving bilingual pay

Division of Occupational Safety and Health
Public Safety / Engineering



Juliann Sum
 Chief

Elevator Unit
Debra Tudor
 Principal Safety Engineer, ERT (San Jose)

Amusement Ride and Tramway Unit
Bobby Park
 Acting Regional Manager (Santa Ana)
 Vacant, Regional Manager

Pressure Vessel Unit
Don Cook
 Principal Safety Engineer (Oakland)
 Jovita Boitano, SSA

Engineering Svc
 Santa Ana

J. Afrooz, SRSE
 D. Morris, SRSE
 (Monrovia)
 Jonna Ettl, MST

Certification
 Sacramento
 M. Lockett, SSA
 A. Postnikoff, MST

Special Projects
 D. Barker, SRSE (SD)
 S. Miley, SRSE (SD)
 M. Shields, SRSE (SD)

Monrovia
 E. Hoover, SRSE
 R. Arnott, ASE
 K. Brauer, ASE
 R. Gras, ASE
 T. Navarro, ASE
 R. De Leon, ASE
 S. Gras, ASE
 W. Vallette, ASE
 P. McElvain, ASE
 H. Kurdian, ASE
 J. Ceja, ASE
 R. Hodgkins, ASE
 S. Varcig, ASE
 Vacant, ASE
 M. Sahagun, MST
 L. Papazian, MST
 Y. Nakoud, MST
 K. Chan, MST
 E. Sievert, OA (RA)

Sacramento
 L. Harris, Acting SRSE
 Vacant, SRSE
 R. Bisnett, ASE
 J. Goonan, ASE
 L. Harris, ASE
 C. Hiscott, ASE
 S. Naiman, ASE
 M. Lawson, ASE
 N. Fuller, ASE
 J. Ruth, ASE
 R. Ovalle, ASE
 L. Dolin, ASE
 K. Weinstein, ASE

M. Chow, MST
 Vacant, OA
 A. Francis, OT (LT)

Statewide Invoicing
 C. Moore, MST

Oakland
 D. Henderson, SRSE
 J. Bernardi, ASE
 G. Gonzalez, ASE
 P. Green, ASE
 J. Moore, ASE
 P. Namjouy, ASE
 J. Petri, ASE
 A. Rutherford, ASE
 J. Stafford, ASE
 C. Tsingis, ASE
 J. Canals, ASE
 D. De Marta, ASE
 J. Stiles, ASE
 J. Gonzalez, ASE
 Vacant, ASE*

San Francisco
 L. Swerrie, SRSE
 P. Boyd, ASE
 D. Gee, ASE
 E. Peralta, ASE
 B. Tuck, ASE
 V. Wong, ASE
 A. Fernandez, ASE
 Vacant, ASE
 Vacant, ASE
 Vacant, ASE
 Vacant, ASE

Support Staff
 M. Cheung, MST
 T. Farber, MST
 Vacant, MST
 Abel Fosten, OT
 Brooke Conry, OA

Tramway
 Sacramento

Vacant, SrSE
 Marc Sherrill, ASE
 M. Schopfer, ASE

Lindsey Stocksill, OT

PAR
 Santa Ana

Kelley Roberts, Acting Sr SE
 Bobby Park, Sr SE
 B. Taylor, ASE
 R. Farr, ASE
 T. Koczwar, ASE
 M. Schuller, ASE

Donna Roberts, MST
 Randell Dennewitz, OT(LT)

Santa Ana
 (Sacramento TAR)
 Kelley Roberts, ASE
 Glenn Miyoshi, ASE
 Vacant, ASE

TAR/PAR
 Sacramento

S. Prather, Sr SE
 M. King, ASE
 D. Campi, ASE
 J. Denny, ASE

Dawnetta Rouw, MST
 W. McFall, OT
 M. Quintero, OT

Certification
 K. Sellers, OT

Oakland

L. Tong, SrSE
 M. Davidian, SrSE

B. Sherman, ASE
 D. Smith, ASE
 M. Coelho, ASE
 M. White, ASE
 R. Akeffo, ASE
 P. Schoch, ASE
 W. Goff, ASE
 J. Stokes, ASE
 A. Dao, ASE
 M. Shandor, ASE
 Vacant, ASE
 D. Ethier, ASE (RA)
 M. Brush, ASE (RA)

Support Staff
 R. Miranda, MST
 T. Milkelsen, OT
 A. Barwela, OA

Santa Ana/Bakersfield

G. Teel, SrSE
 N. Garcia, SrSE

E. Capalla, ASE
 J. Anderson, ASE
 J. Mara, ASE
 J. Little, ASE
 P. Gee, ASE
 R. Dyk, ASE
 T. Setterlund, ASE
 X. Fang, ASE
 Wilbert Lacambra, ASE
 Vincent Bethel, ASE
 Claudia Heflin, ASE
 Hugo Gonzalez, ASE

Support Staff
 G. Huizar, MST
 B. Ongpauco, MST

San Diego
 D. Kieferdort, SRSE
 M. Hazariwala, ASE
 J. Humphrey, ASE
 H. Richter, ASE
 S. Smith, ASE
 G. McAbee, ASE
 R. Burnett, ASE
 D. Schmaltz, ASE
 D. Crawford, ASE
 G. Stucky, ASE
 M. Wickens, ASE
 K. Stein, ASE
 Vacant, ASE
 Vacant, ASE
 H. Harris, MST
 J. Ho, OT
 A. Burrell, OA

San Bernardino
 W. Winfield, SRSE
 N. Chua, ASE
 J. Foster, ASE
 K. London, ASE
 J. Talak, ASE
 J. Turner, ASE
 D. Barachkov, ASE
 J. Nicasio, ASE
 D. Nicholson, ASE
 E. Bonty, ASE
 Vacant, ASE

C. Payan, MST
 D. Austin, OA
 D. Dailey, OA

Santa Ana
 S. Singleton, SRSE
 R. Cordova, ASE
 P. Lacsamana, ASE
 D. Mestayer, ASE
 K. Palma, ASE
 J. Zolotoff, ASE
 R. Lawson, ASE
 K. Jones, ASE
 M. Coletto, ASE
 J. Simon, ASE
 M. Gaynor, ASE
 L. Stevens, ASE
 D. Scott, ASE
 Vacant, ASE

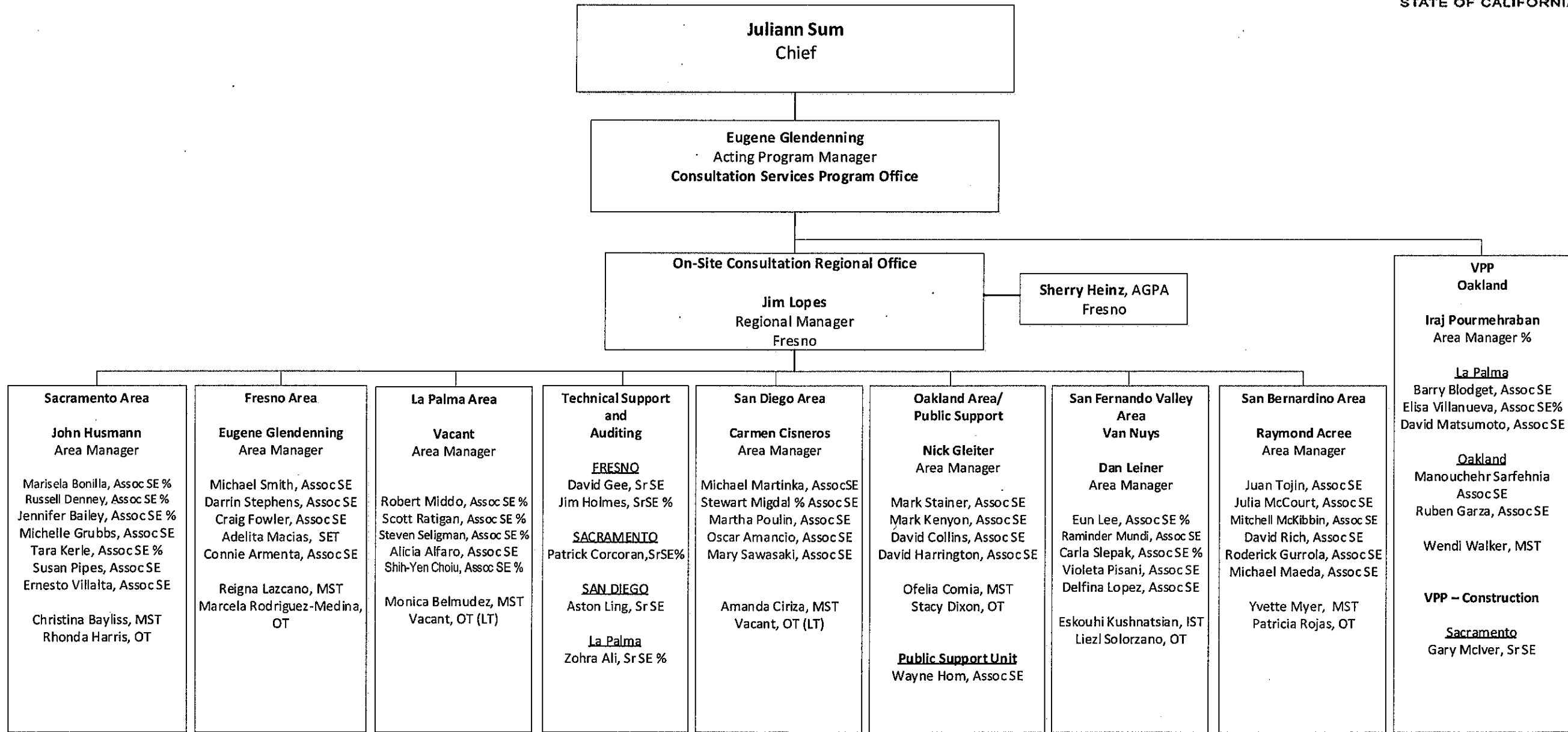
C. Gusman, MST
 M. Sepulveda, OT
 Vacant, OT

San Jose
 A. Gonzalez, SRSE
 D. Piccolo, ASE
 K. Wen, ASE
 D. Wong, ASE
 R. Sterner, ASE
 J. Rollof, ASE
 K. Zaya, ASE
 Vacant, ASE
 Vacant, ASE

M. Vinoya, MST
 P. Baker, MST
 Kirsten Votaw, OT*
 Vacant, OT (LT)

* denotes half time
 Red font denotes employees receiving bilingual pay
 Revised 2/13/2018

**Division of Occupational Safety and Health
Consultation Services Branch**



Red font denotes employees receiving bilingual pay

% = current or formerly IH