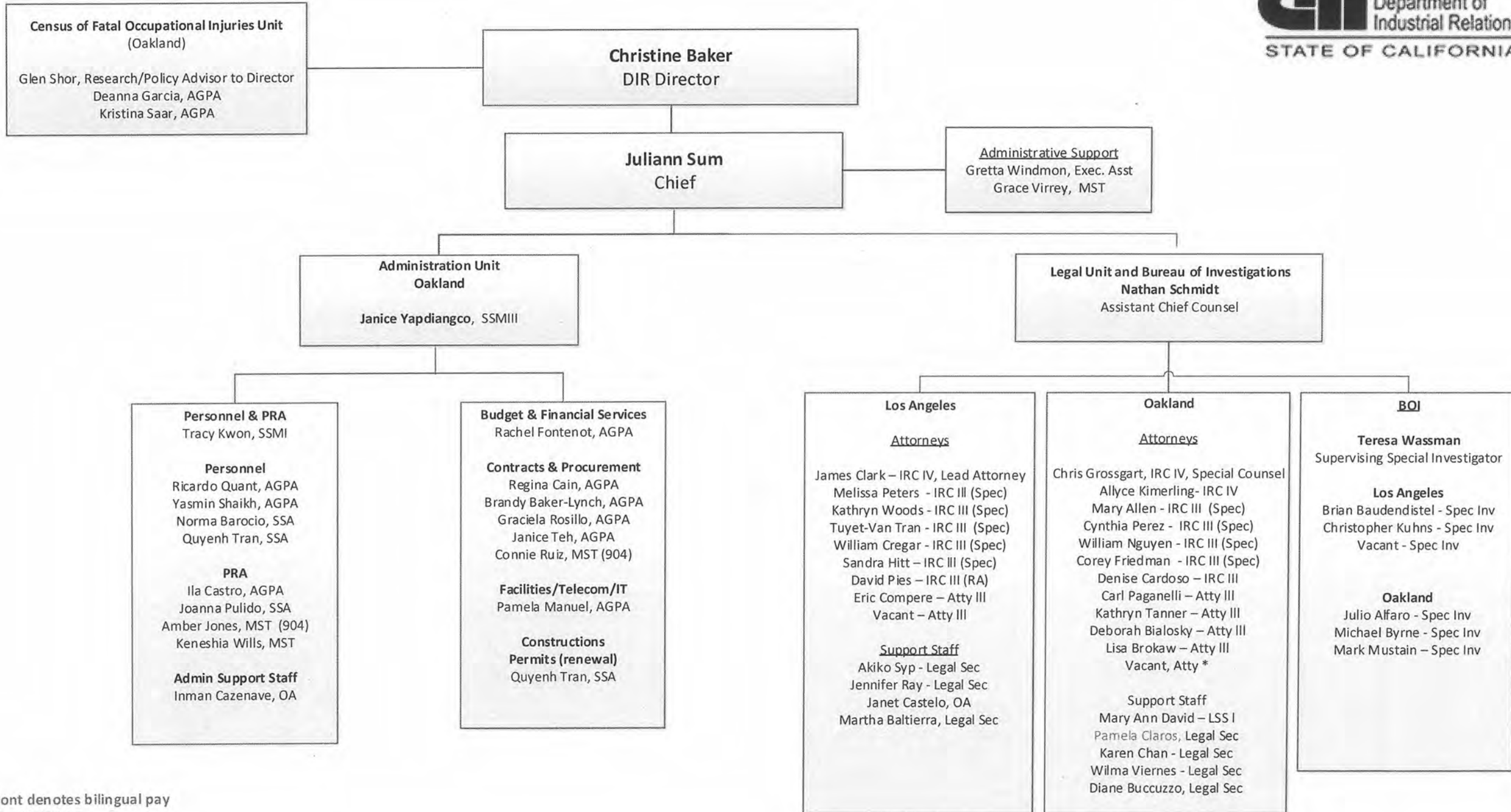
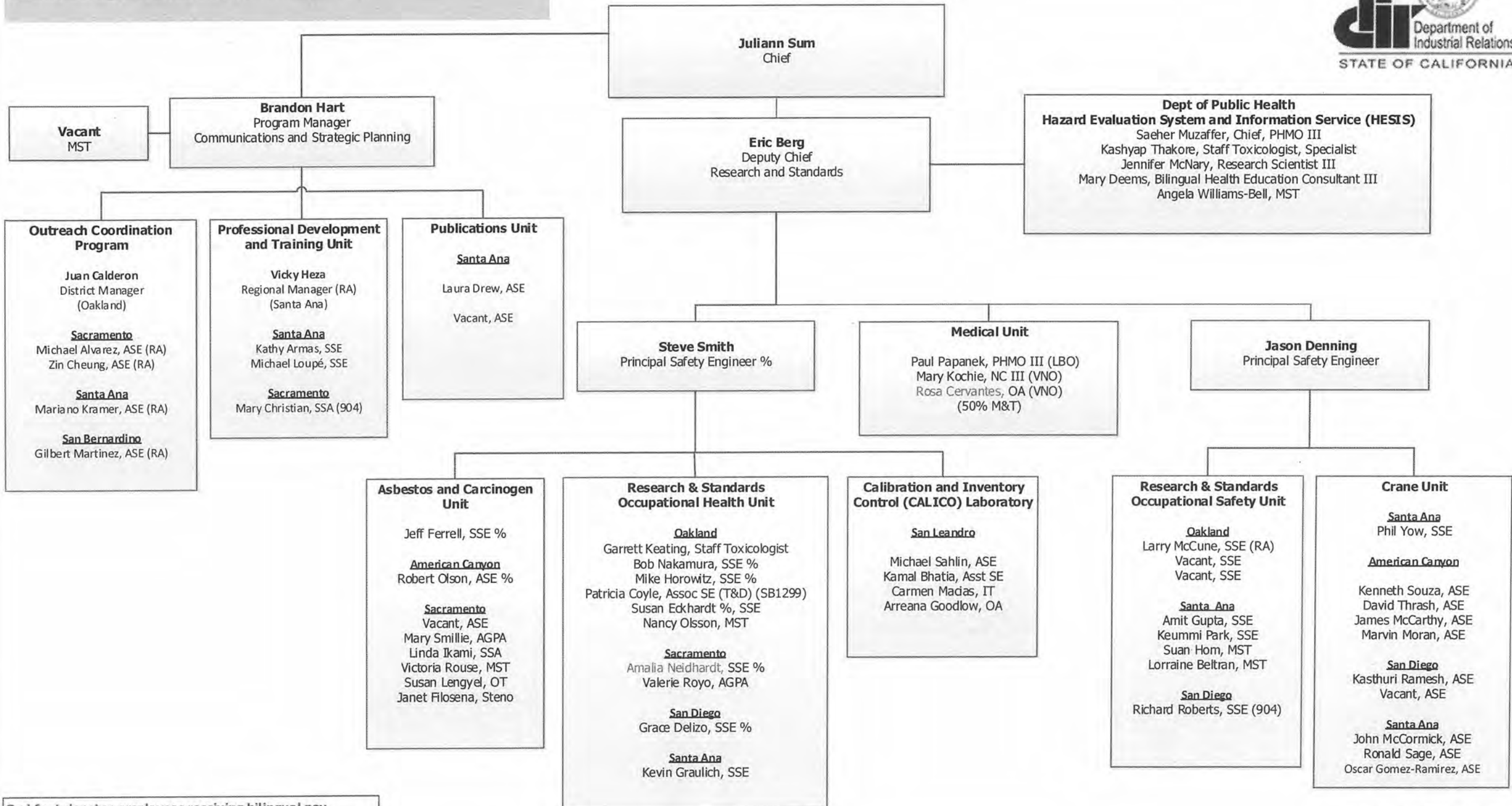


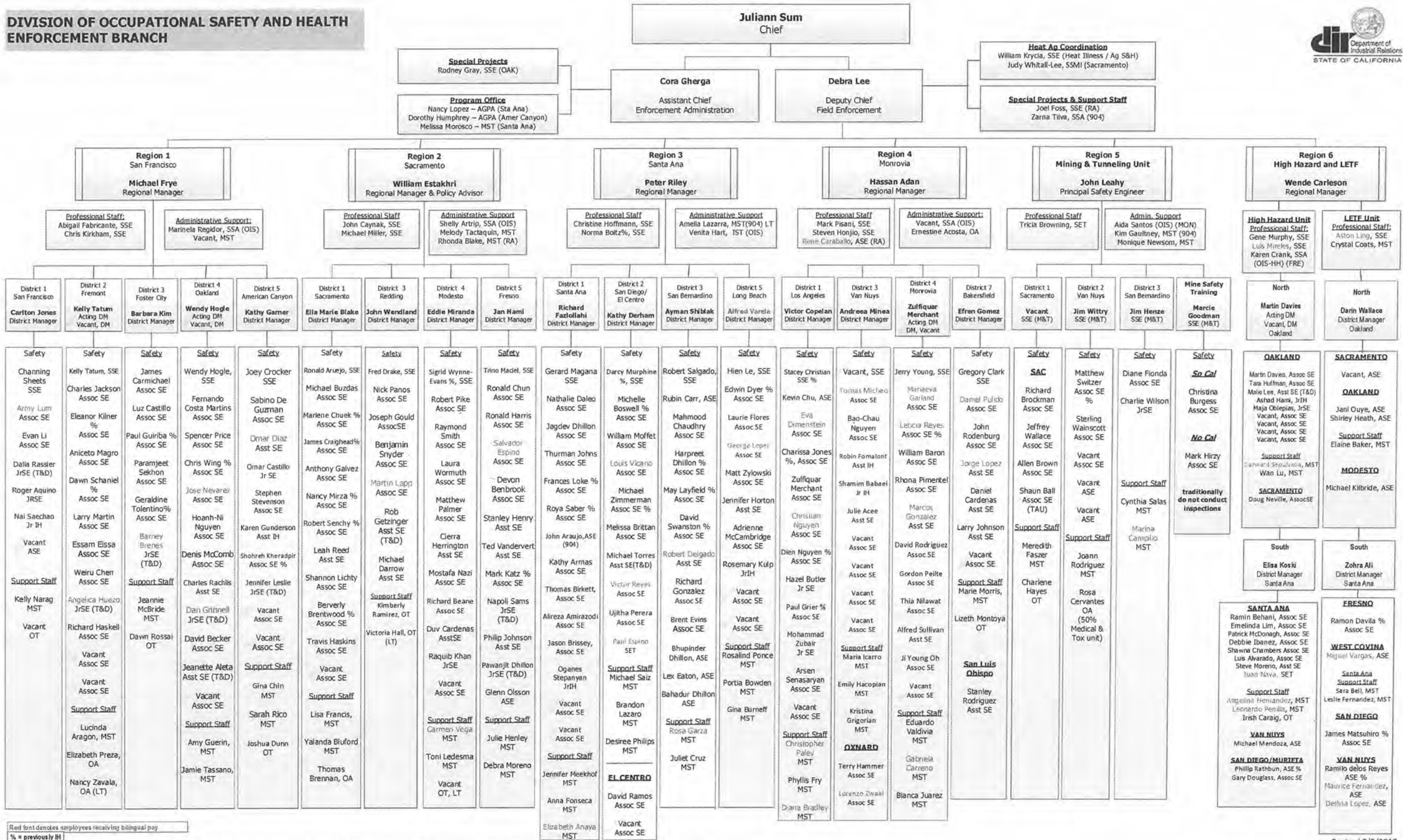
**DIVISION OF OCCUPATIONAL SAFETY AND HEALTH  
ADMINISTRATION/LEGAL-BOI**





Red font denotes employees receiving bilingual pay  
% = formerly IH

**DIVISION OF OCCUPATIONAL SAFETY AND HEALTH  
ENFORCEMENT BRANCH**

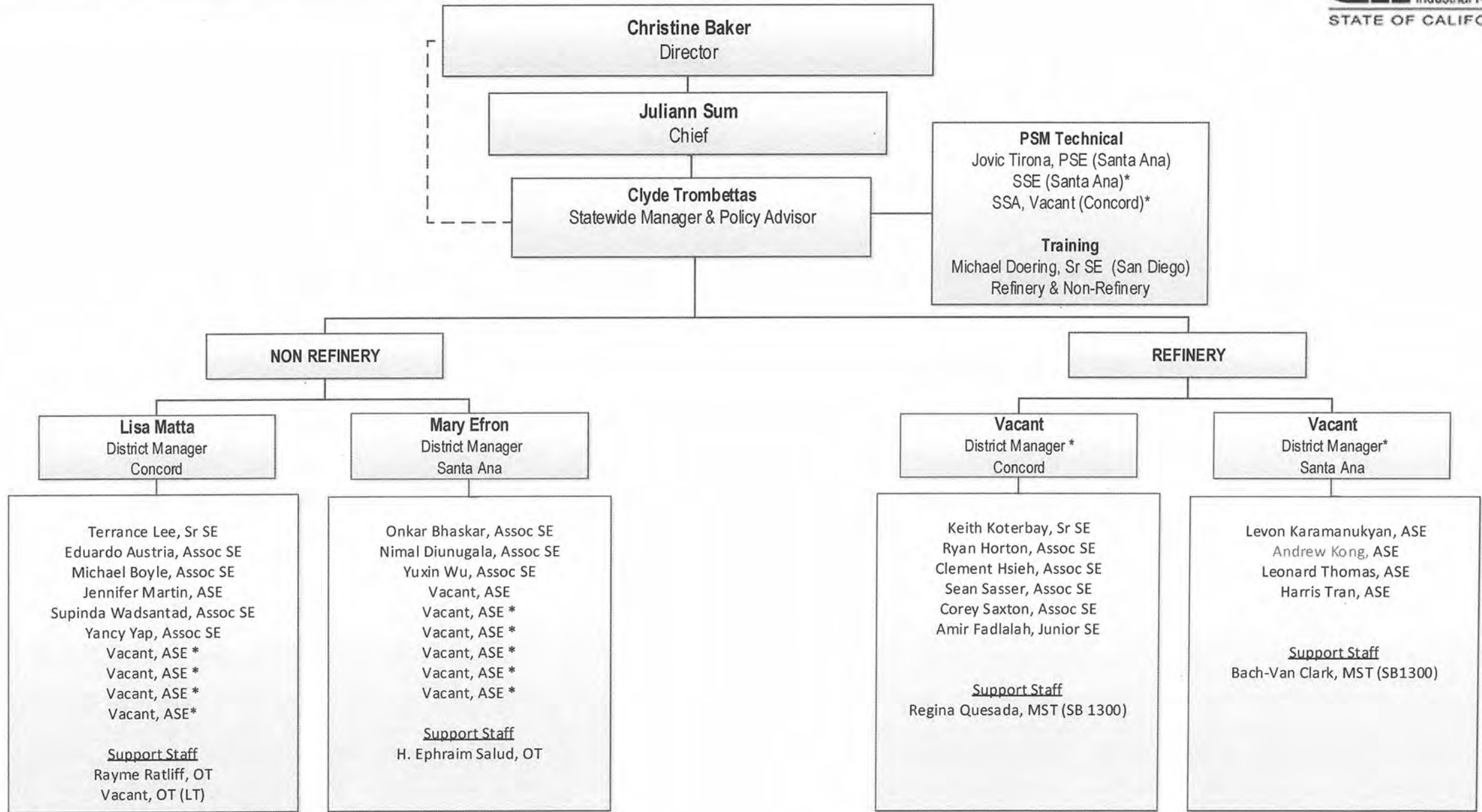


Red font denotes employees receiving bilingual pay  
% = previously IH

PSE - Principal Safety Engineer; RM - Regional Manager; DM - District Manager; SSE - Senior Safety Engineer; AssocSE/ASE - Associate Safety Engineer; AsstSE - Assistant Safety Engineer; SET - Safety Engineer Technician; JrSE - Junior Safety Engineer; SSM - Staff Services Manager; AGPA - Associate Governmental Program Analyst; SSA - Staff Services Analyst; MST - Management Services Tech; IST - Information System Tech; OT - Office Tech; OA - Office Assistant; RA - Retired Annuitant; T&D - Training and Development; TAU - Temporary Authorization Appointment



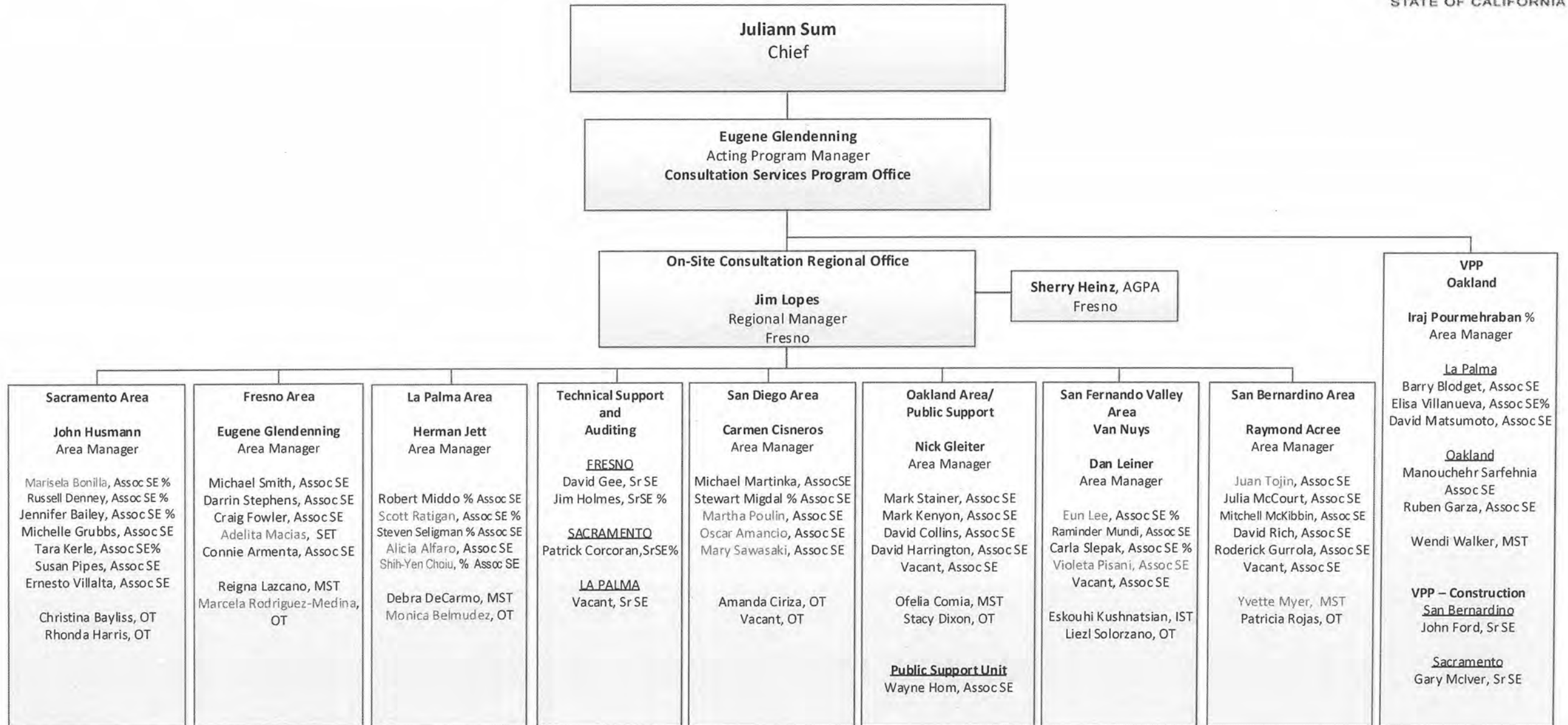
**DIVISION OF OCCUPATIONAL SAFETY AND HEALTH  
ENFORCEMENT BRANCH - PROCESS SAFETY MANAGEMENT (PSM) UNIT**



Red font denotes employees receiving bilingual pay

\* New BCP Positions FY17/18

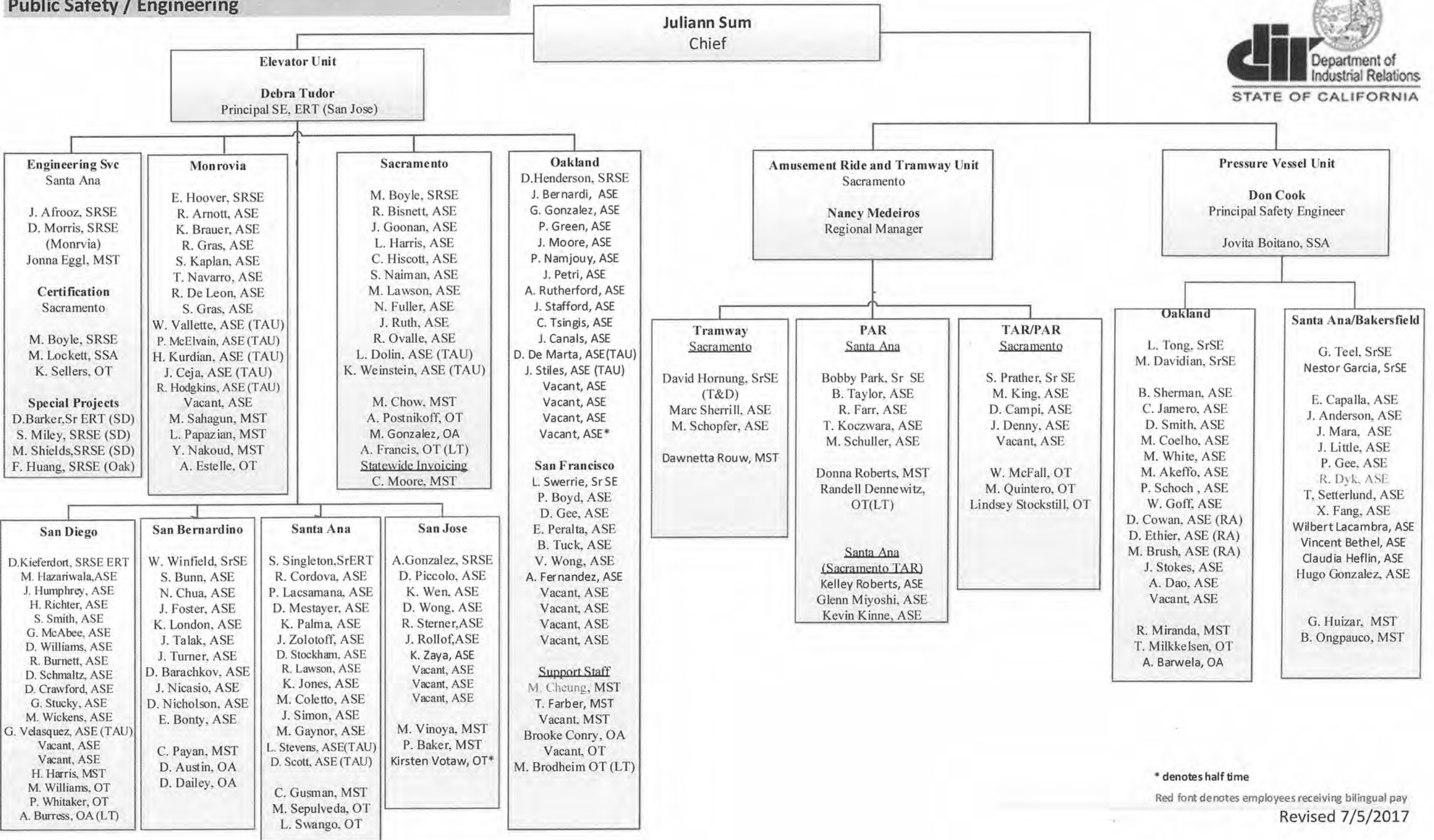
**Division of Occupational Safety and Health  
Consultation Services Branch**



Red font denotes employees receiving bilingual pay

% = formerly IH

**Division of Occupational Safety and Health  
Public Safety / Engineering**



\* denotes half time  
Red font denotes employees receiving bilingual pay  
Revised 7/5/2017