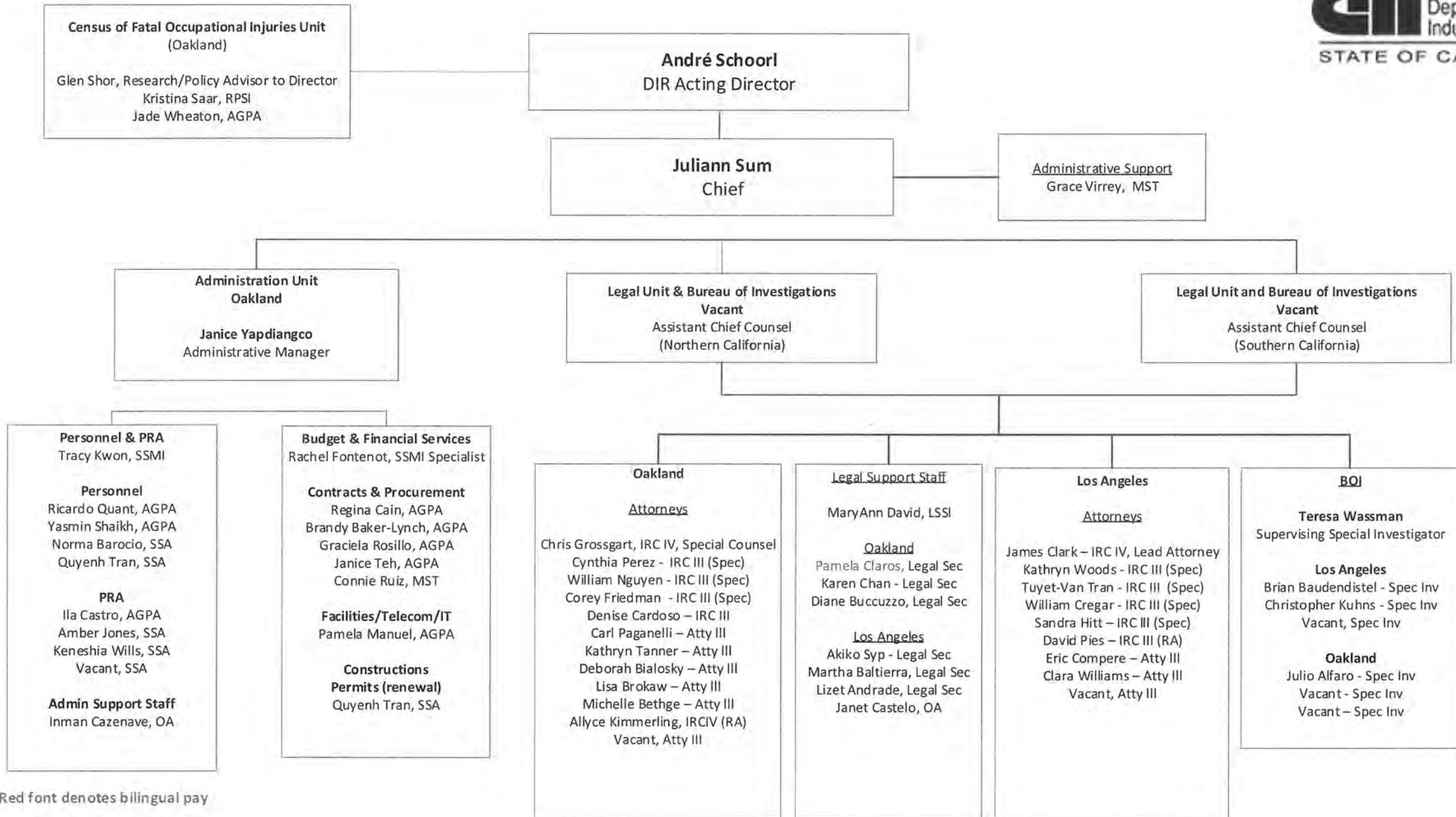
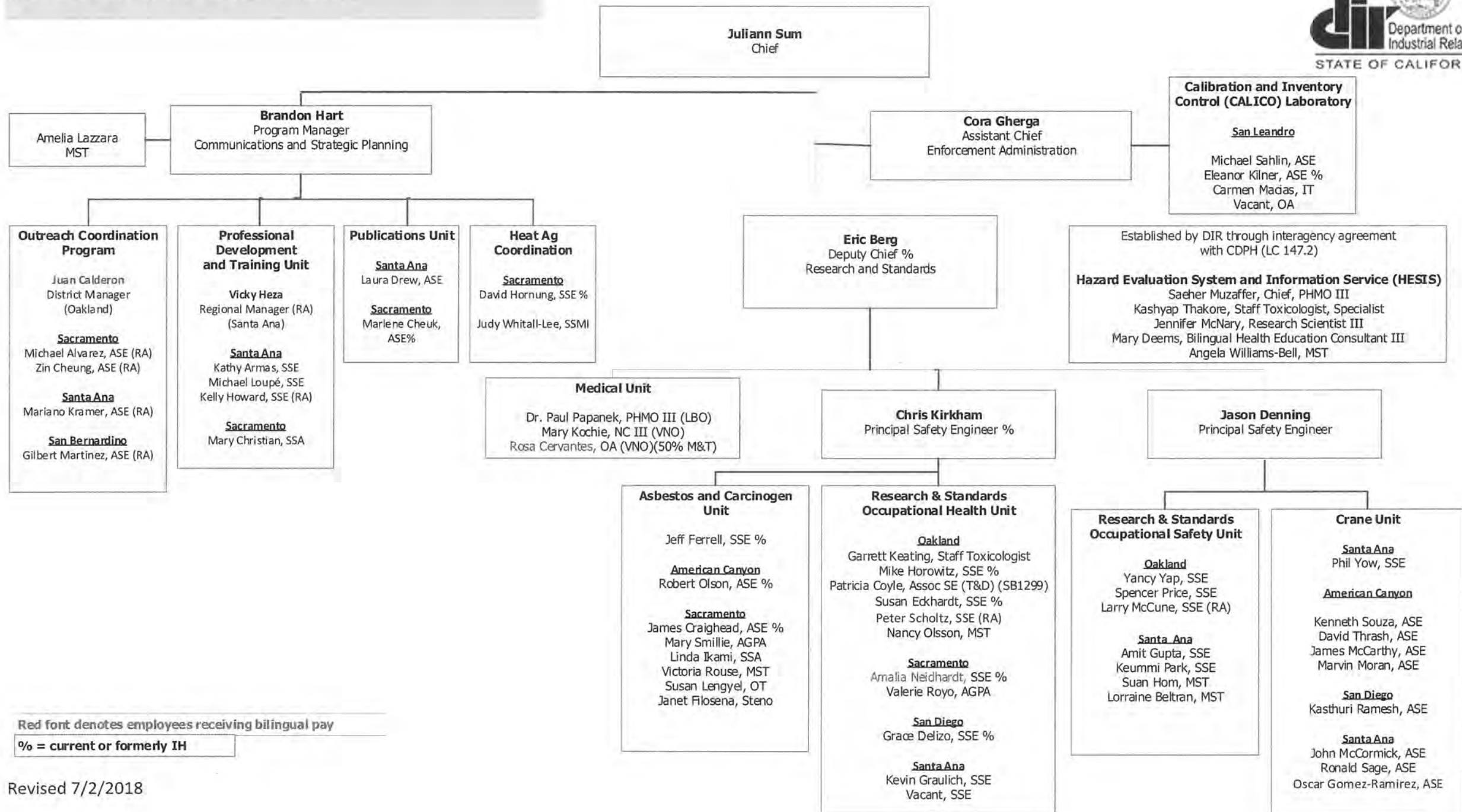


**DIVISION OF OCCUPATIONAL SAFETY AND HEALTH  
ADMINISTRATION/LEGAL-BOI**



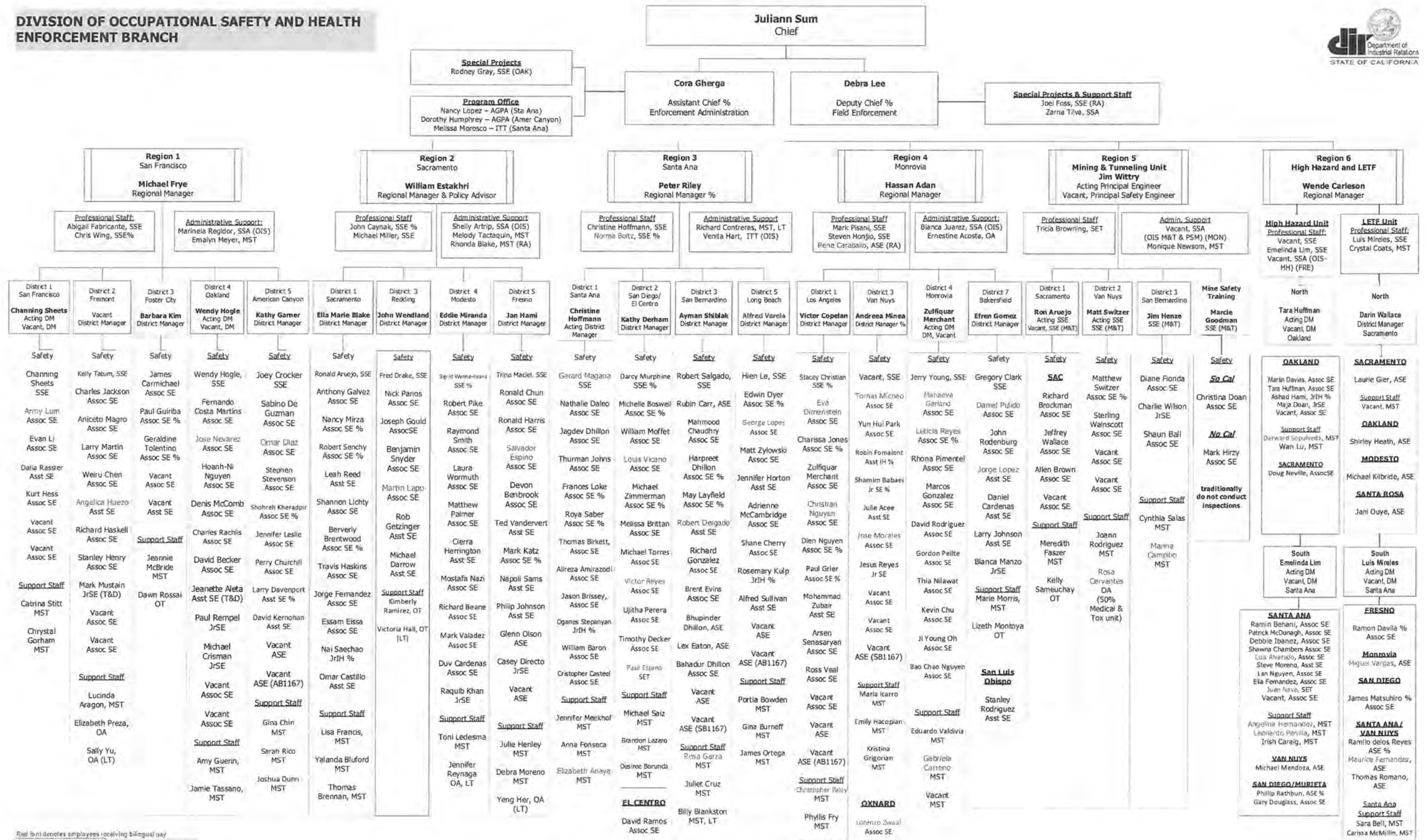
Red font denotes bilingual pay



Red font denotes employees receiving bilingual pay

% = current or formerly IH

**DIVISION OF OCCUPATIONAL SAFETY AND HEALTH  
ENFORCEMENT BRANCH**

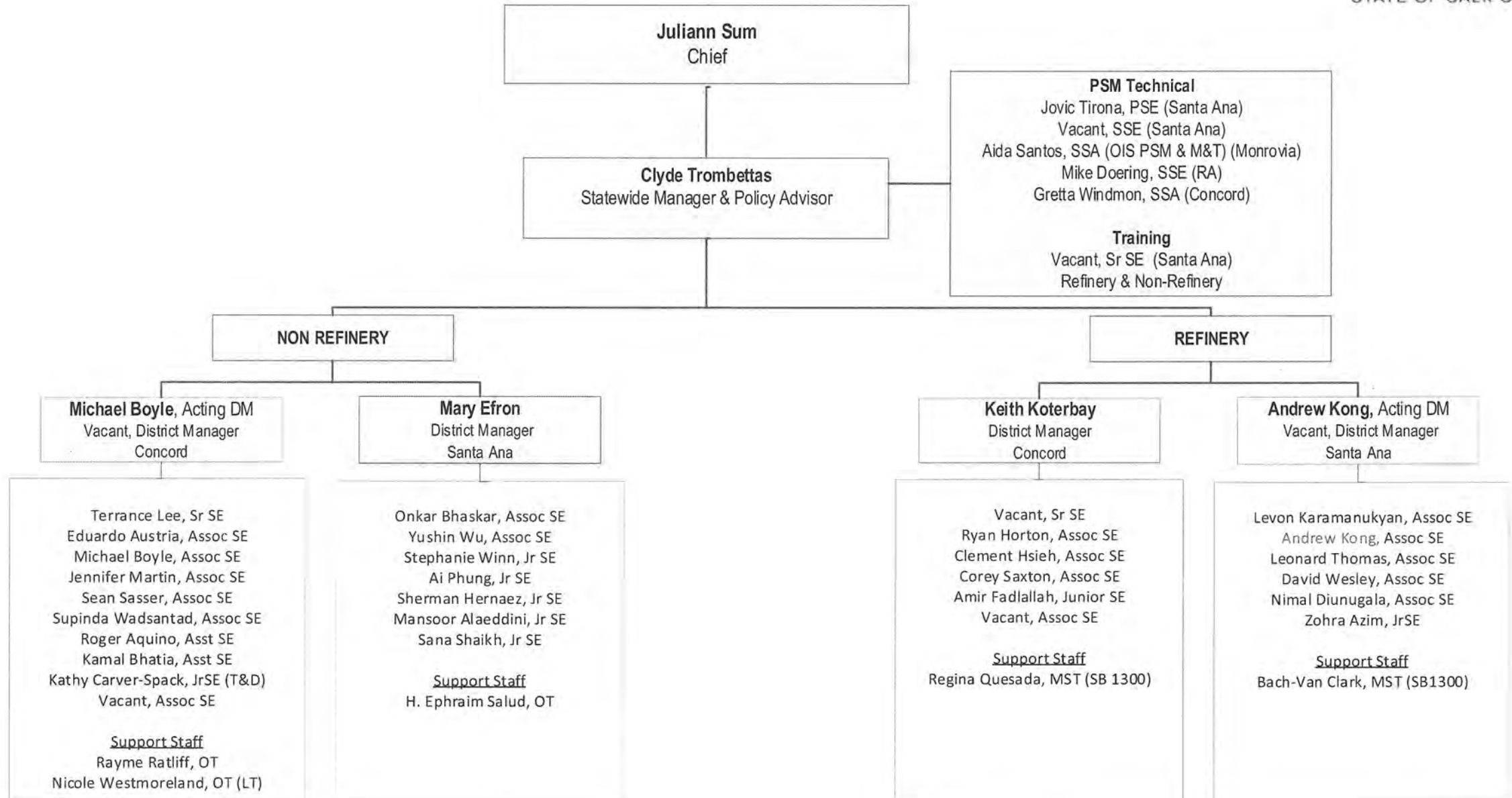


Red font denotes employees receiving bilingual pay

% = current or previously IH

PE - Principal Safety Engineer; RM - Regional Manager; DM - District Manager; SSE - Senior Safety Engineer; Assoc SE - Associate Safety Engineer; Asst SE - Assistant Safety Engineer; SET - Safety Engineer Technician; Jr SE - Junior Safety Engineer; SSM - Staff Services Manager; AGPA - Associate Governmental Program Analyst; SSA - Staff Services Analyst; MST - Management Services Tech; ITT - Information Systems Tech; DT - Office Tech; OA - Office Assistant; RA - Retired Annuitant; T&D - Training and Development; TAU - Temporary Assignment/Assignment

**DIVISION OF OCCUPATIONAL SAFETY AND HEALTH  
ENFORCEMENT BRANCH - PROCESS SAFETY MANAGEMENT (PSM) UNIT**



Red font denotes employees receiving bilingual pay

**Juliann Sum**  
 Chief

**Elevator Unit**

**Debra Tudor**  
 Principal Safety Engineer, ERT (San Jose)

**Engineering Svc**  
 Santa Ana

J. Afrooz, SRSE  
 D. Morris, SRSE  
 (Monrovia)  
 Jonna Eggli, MST

**Certification**  
 Sacramento  
 M. Lockett, SSA  
 A. Postnikoff, MST

**Special Projects**  
 D. Barker, SRSE (SD)  
 S. Miley, SRSE (SD)  
 M. Shields, SRSE (SD)

**Monrovia**

E. Hoover, SRSE  
 R. Arnott, ASE  
 K. Brauer, ASE  
 R. Gras, ASE  
 T. Navarro, ASE  
 R. De Leon, ASE  
 S. Gras, ASE  
 W. Vallette, ASE  
 P. McElvain, ASE  
 H. Kurdian, ASE  
 J. Ceja, ASE  
 R. Hodgkins, ASE  
 S. Varczag, ASE  
 Vacant, ASE  
 M. Sahagun, MST  
 Y. Nakoud, MST  
 K. Chan, MST  
 M. Dayrit, MST  
 E. Sievert, OA (RA)

**Sacramento**

L. Harris, Acting SRSE  
 Vacant, SRSE  
 R. Bisnett, ASE  
 J. Goonan, ASE  
 L. Harris, ASE  
 C. Hiscott, ASE  
 S. Naiman, ASE  
 M. Lawson, ASE  
 N. Fuller, ASE  
 J. Ruth, ASE  
 R. Ovalle, ASE  
 L. Dolin, ASE  
 K. Weinstein, ASE  
  
 M. Chow, MST  
 Vacant, OA  
 A. Francis, OT (LT)  
  
Statewide Invoicing  
 C. Moore, MST

**Oakland**

D. Henderson, SRSE  
 J. Bernardi, ASE  
 G. Gonzalez, ASE  
 J. Moore, ASE  
 P. Namjouy, ASE  
 A. Rutherford, ASE  
 J. Stafford, ASE  
 C. Tsingis, ASE  
 J. Canals, ASE  
 D. De Marta, ASE  
 J. Stiles, ASE  
 J. Gonzalez, ASE  
 Vacant, ASE  
 Vacant, ASE  
 Vacant, ASE\*

**San Francisco**  
 L. Swerrie, SRSE  
 P. Boyd, ASE  
 D. Gee, ASE  
 E. Peralta, ASE  
 B. Tuck, ASE  
 V. Wong, ASE  
 A. Fernandez, ASE  
 Vacant, ASE  
 Vacant, ASE  
 Vacant, ASE  
 Vacant, ASE

**Support Staff**  
 M. Cheung, MST  
 T. Farber, MST  
 A. Reeser, OT  
 Brooke Conry, OA  
 Vacant, OA/OT

**Amusement Ride and Tramway Unit**

**Bobby Park**  
 Acting Regional Manager (Santa Ana)  
 Vacant, Regional Manager

**Tramway**  
 Sacramento

Nancy Medeiros, SSE (RA)  
 Vacant, SrSE  
 Marc Sherrill, ASE  
 M. Schopfer, ASE  
  
 Lindsey Stocksill, OT

**PAR**  
 Santa Ana

Kelley Roberts, Acting Sr SE  
 Bobby Park, Sr SE  
 B. Taylor, ASE  
 R. Farr, ASE  
 T. Koczwarra, ASE  
 M. Schuller, ASE  
  
 Donna Roberts, MST  
 Randell Dennewitz, OT(LT)  
  
Santa Ana  
 (Sacramento TAR)  
 Kelley Roberts, ASE  
 Glenn Miyoshi, ASE  
 Vacant, ASE

**TAR/PAR**  
 Sacramento

S. Prather, Sr SE  
 M. King, ASE  
 D. Campi, ASE  
 J. Denny, ASE  
  
 Dawnetta Rouw, MST  
 W. McFall, OT  
 M. Quintero, OT  
  
Certification  
 K. Sellers, OT

**Pressure Vessel Unit**

**Don Cook**  
 Principal Safety Engineer (Oakland)  
  
 Jovita Boitano, SSA

**Oakland**

L. Tong, SrSE  
 M. Davidian, SrSE  
  
 B. Sherman, ASE  
 D. Smith, ASE  
 M. Coelho, ASE  
 M. White, ASE  
 M. Akeffo, ASE  
 P. Schoch, ASE  
 W. Goff, ASE  
 J. Stokes, ASE  
 A. Dao, ASE  
 M. Shandor, ASE  
 A. Adams, ASE  
 D. Ethier, ASE (RA)  
 M. Brush, ASE (RA)

**Support Staff**  
 R. Miranda, MST  
 T. Milkelsen, OT  
 A. Barwela, OA

**Santa Ana/Bakersfield**

G. Teel, SrSE  
 N. Garcia, SrSE  
  
 E. Capalla, ASE  
 J. Anderson, ASE  
 J. Mara, ASE  
 J. Little, ASE  
 P. Gee, ASE  
 R. Dyk, ASE  
 T. Setterlund, ASE  
 X. Fang, ASE  
 Wilbert Lacabra, ASE  
 Vincent Bethel, ASE  
 Claudia Heflin, ASE  
 Hugo Gonzalez, ASE  
  
Support Staff  
 Vacant, MST  
 B. Ongpauco, MST

**San Diego**

D. Kieferdort, SRSE  
 M. Hazariwala, ASE  
 J. Humphrey, ASE  
 H. Richter, ASE  
 S. Smith, ASE  
 G. McAbee, ASE  
 R. Burnett, ASE  
 D. Schmaltz, ASE  
 D. Crawford, ASE  
 G. Stucky, ASE  
 M. Wickens, ASE  
 K. Stein, ASE  
 Vacant, ASE  
 Vacant, ASE  
 Vacant, ASE  
  
 H. Harris, MST  
 J. Ho, OT  
 A. Burruss, OA

**San Bernardino**

W. Winfield, SRSE  
 N. Chua, ASE  
 J. Foster, ASE  
 K. London, ASE  
 J. Talak, ASE  
 J. Turner, ASE  
 D. Barachkov, ASE  
 J. Nicasio, ASE  
 D. Nicholson, ASE  
 E. Bonty, ASE  
 Vacant, ASE  
  
 C. Payan, MST  
 D. Austin, OA  
 D. Dailey, OA

**Santa Ana**

S. Singleton, SRSE  
 R. Cordova, ASE  
 P. Lacsamana, ASE  
 D. Mestayer, ASE  
 K. Palma, ASE  
 J. Zolotoff, ASE  
 R. Lawson, ASE  
 K. Jones, ASE  
 M. Coletto, ASE  
 J. Simon, ASE  
 M. Gaynor, ASE  
 L. Stevens, ASE  
 D. Scott, ASE  
 Vacant, ASE  
  
 C. Gusman, MST  
 M. Sepulveda, OT  
 Briana Martinez, OT

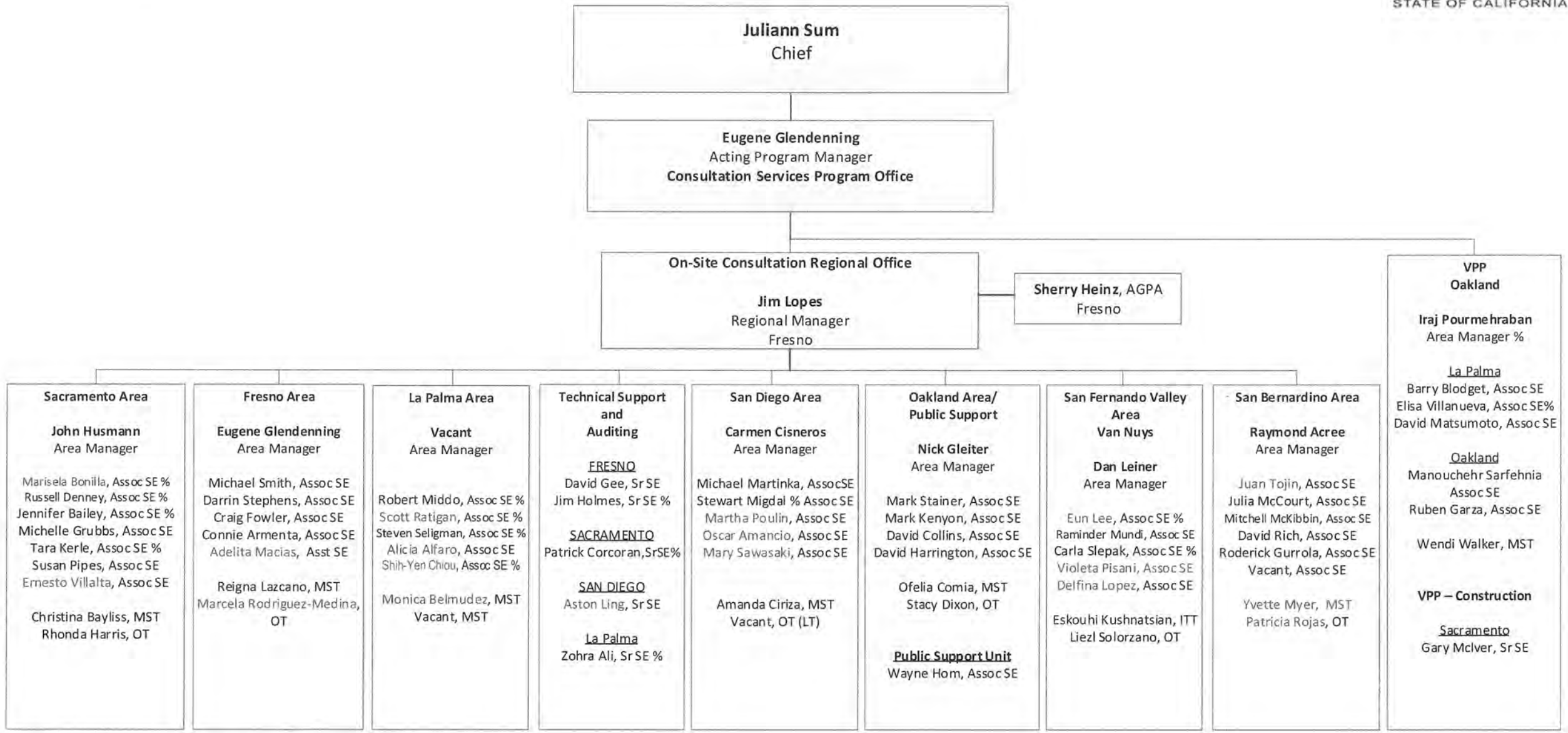
**San Jose**

A. Gonzalez, SRSE  
 D. Piccolo, ASE  
 K. Wen, ASE  
 D. Wong, ASE  
 R. Sterner, ASE  
 J. Roloff, ASE  
 K. Zaya, ASE  
 Vacant, ASE  
 Vacant, ASE  
 Vacant, ASE  
  
 M. Vinoya, MST  
 P. Baker, MST  
 Kirsten Votaw, OT\*  
 Brenda Chau-Hau,  
 OT (LT)

\* denotes half time

Red font denotes employees receiving bilingual pay

**Division of Occupational Safety and Health  
Consultation Services Branch**



Red font denotes employees receiving bilingual pay  
% = current or formerly IH