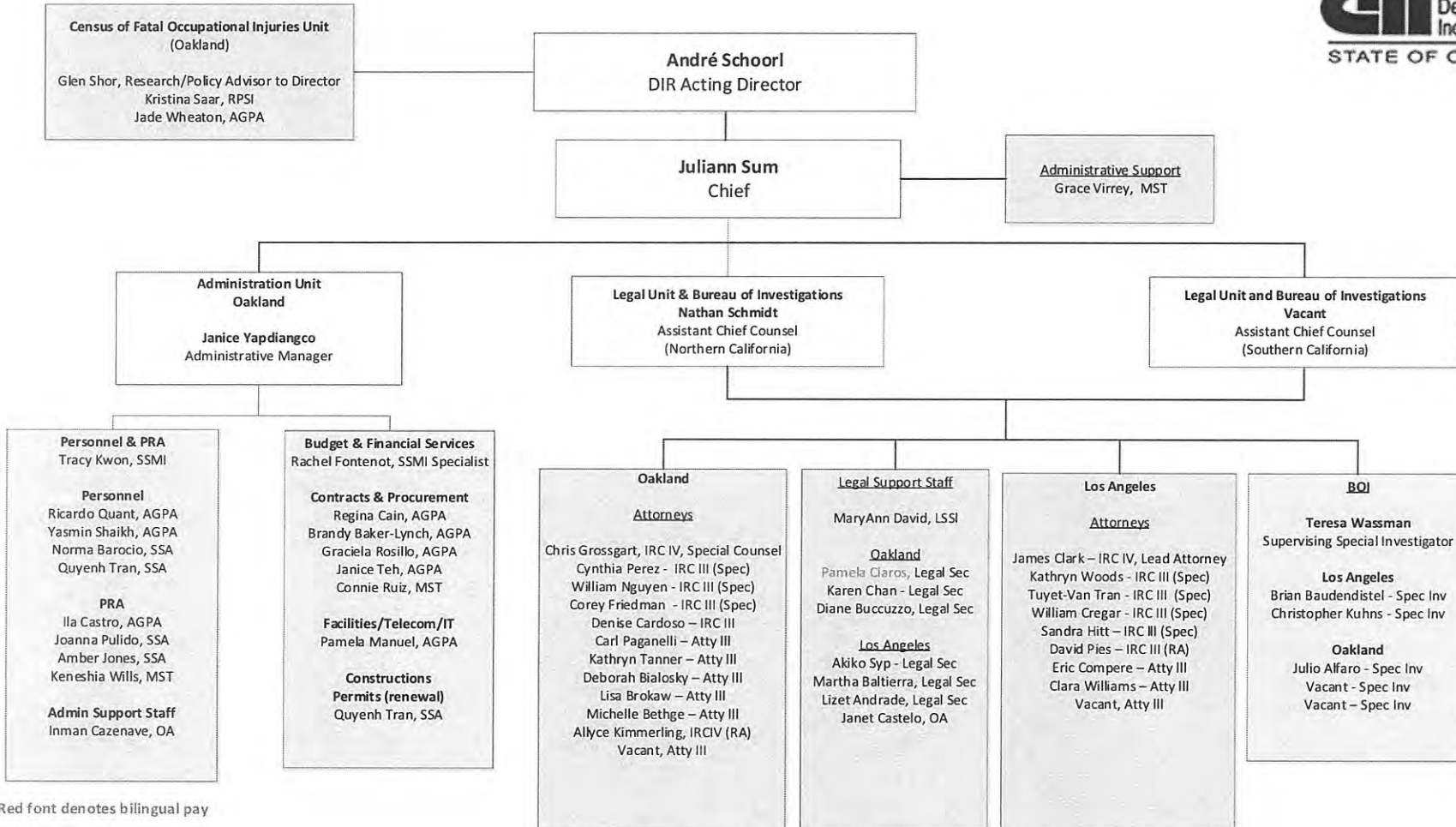


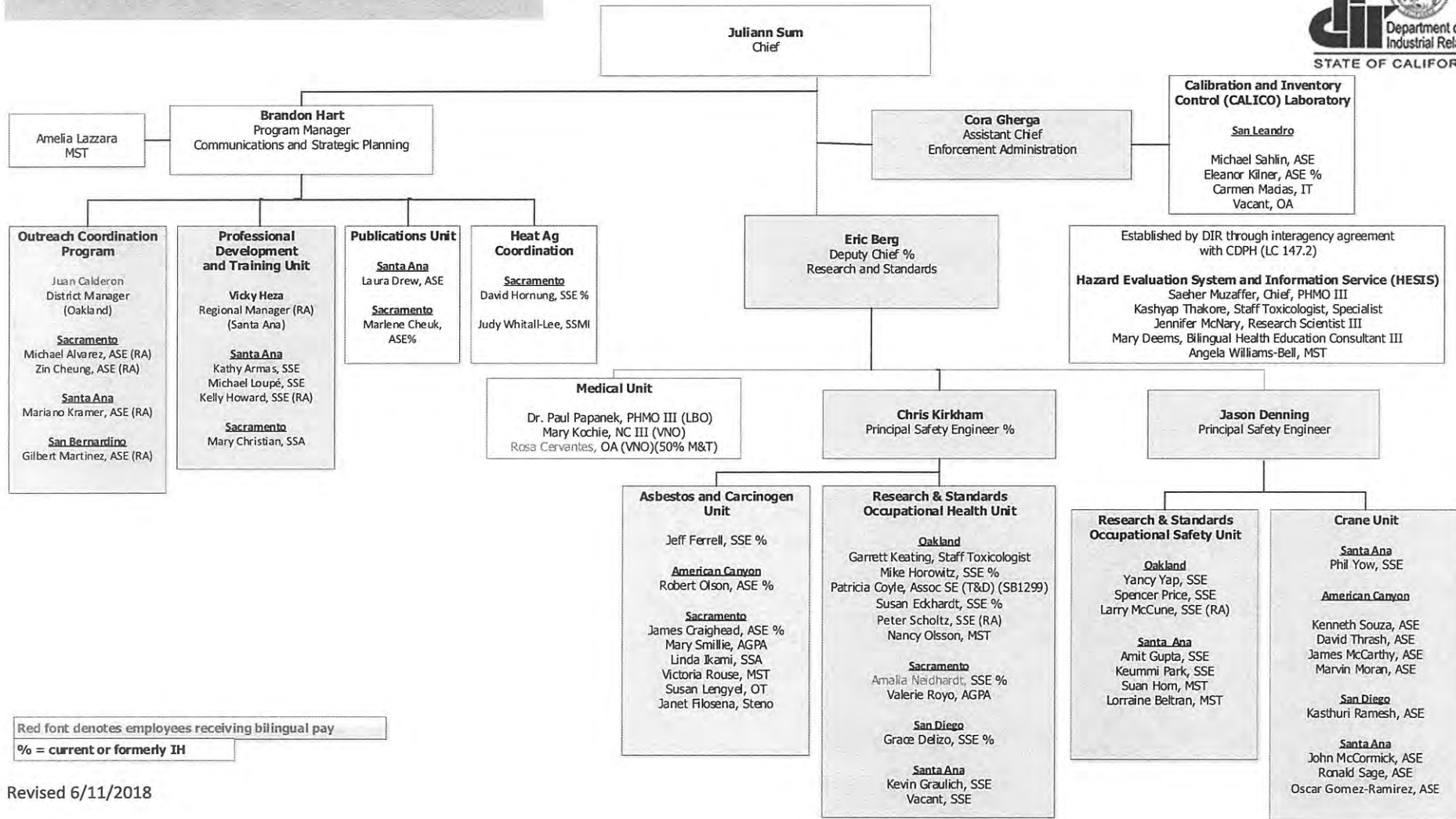
**DIVISION OF OCCUPATIONAL SAFETY AND HEALTH
ADMINISTRATION/LEGAL-BOI**



Red font denotes bilingual pay

Revised 6/13/2018

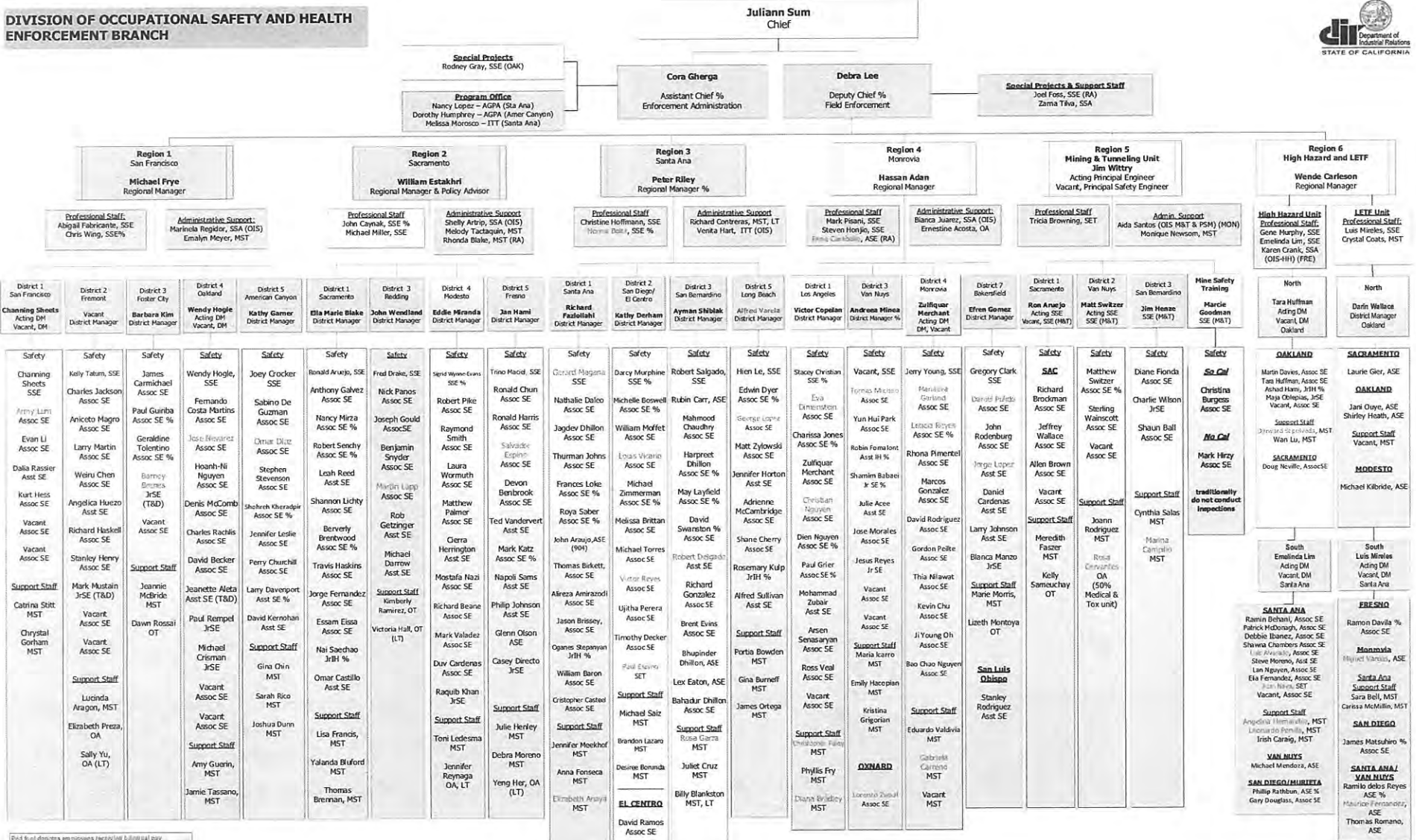
**Division of Occupational Safety and Health
Health, Safety, Medical, and Communications**



Red font denotes employees receiving bilingual pay
% = current or formerly IH

Revised 6/11/2018

**DIVISION OF OCCUPATIONAL SAFETY AND HEALTH
ENFORCEMENT BRANCH**



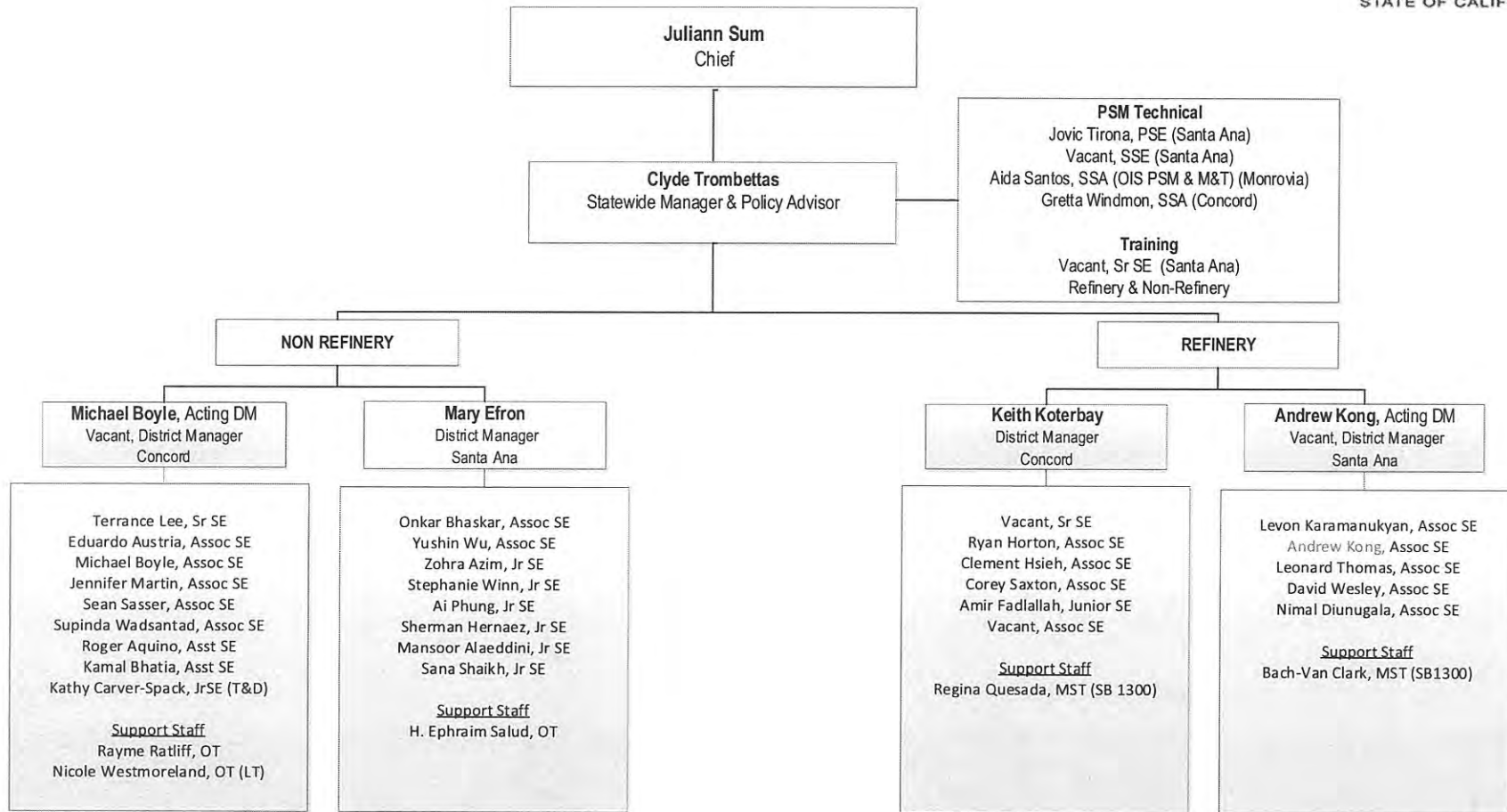
Red text denotes an employee receiving a bilingual pay % = current or previously in

PE - Principal Safety Engineer; RM - Regional Manager; DM - District Manager; SSE - Senior Safety Engineer; Assoc/SSE - Associate Safety Engineer; JSE - Assistant Safety Engineer; SET - Safety Engineer Technician; ASE - Senior Safety Engineer

SSM - S&H Services Manager; AGPA - Associate Government Program Analyst; MST - Management Services Tech; IT - Information System Tech; OT - Office Tech; OA - Office Assistant; RA - Retired Annuitant; T&D - Training and Development; TAL - Temporary Authorization Appointment

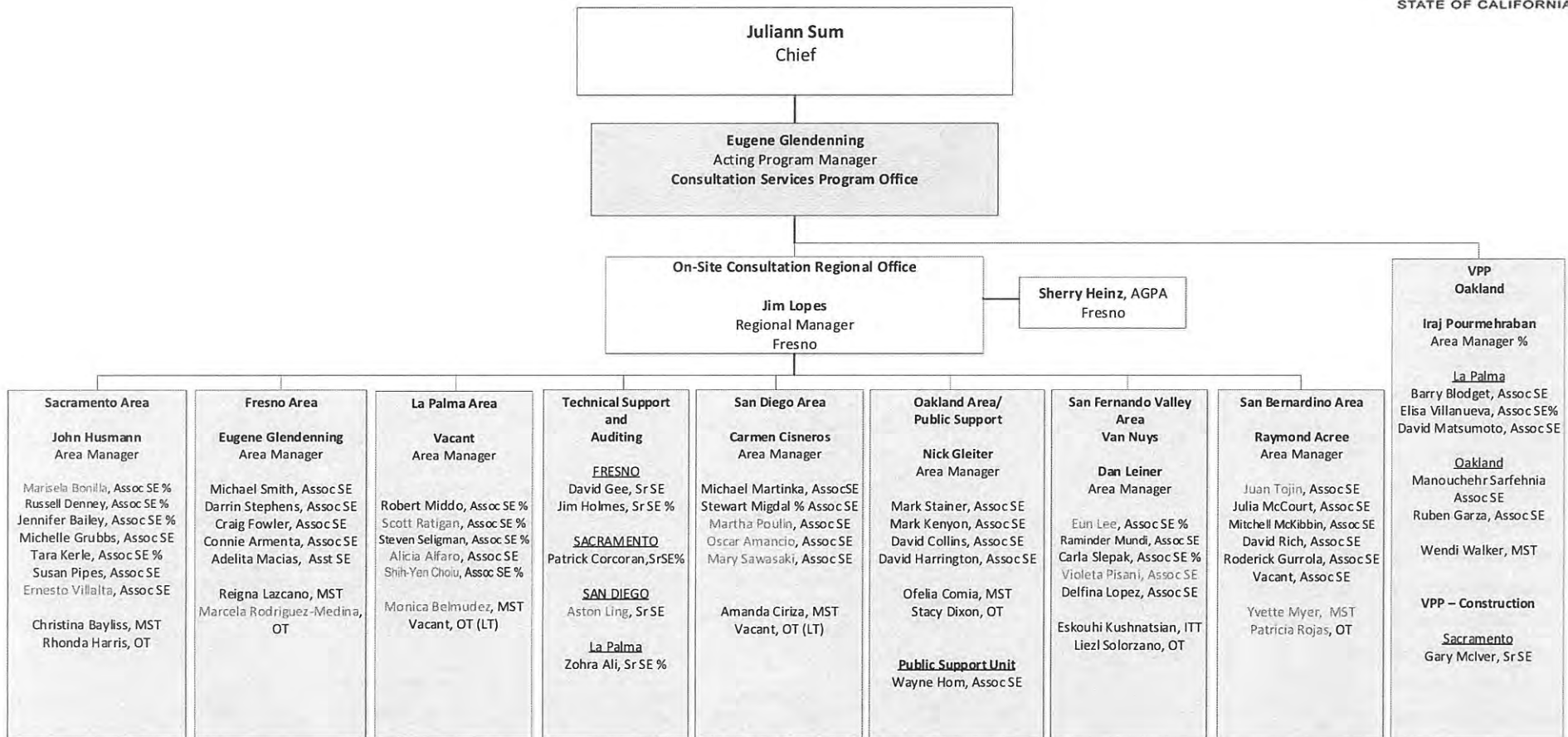
Revised 6/11/2018

**DIVISION OF OCCUPATIONAL SAFETY AND HEALTH
ENFORCEMENT BRANCH - PROCESS SAFETY MANAGEMENT (PSM) UNIT**



Red font denotes employees receiving bilingual pay

**Division of Occupational Safety and Health
Consultation Services Branch**



Red font denotes employees receiving bilingual pay
% = current or formerly IH

Revised 6/11/2018

**Division of Occupational Safety and Health
Public Safety / Engineering**

