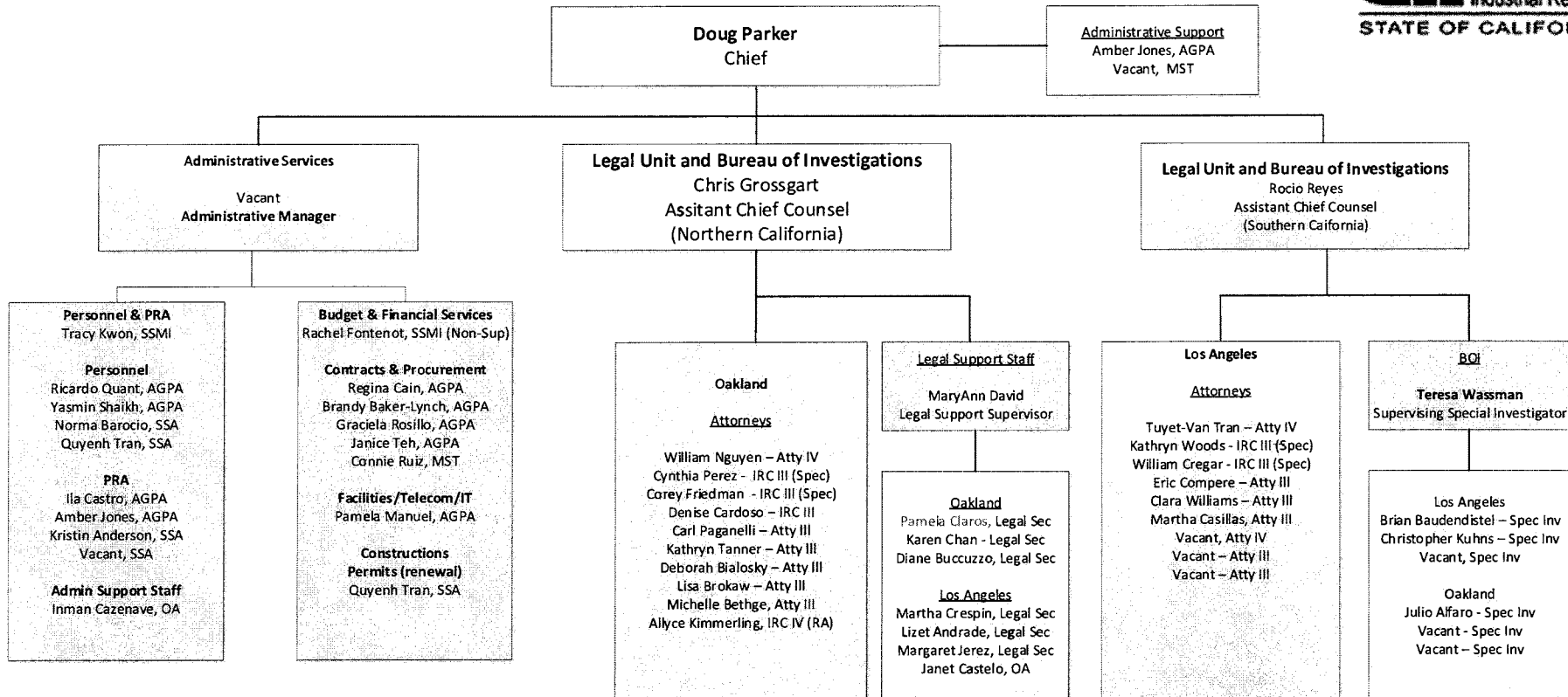


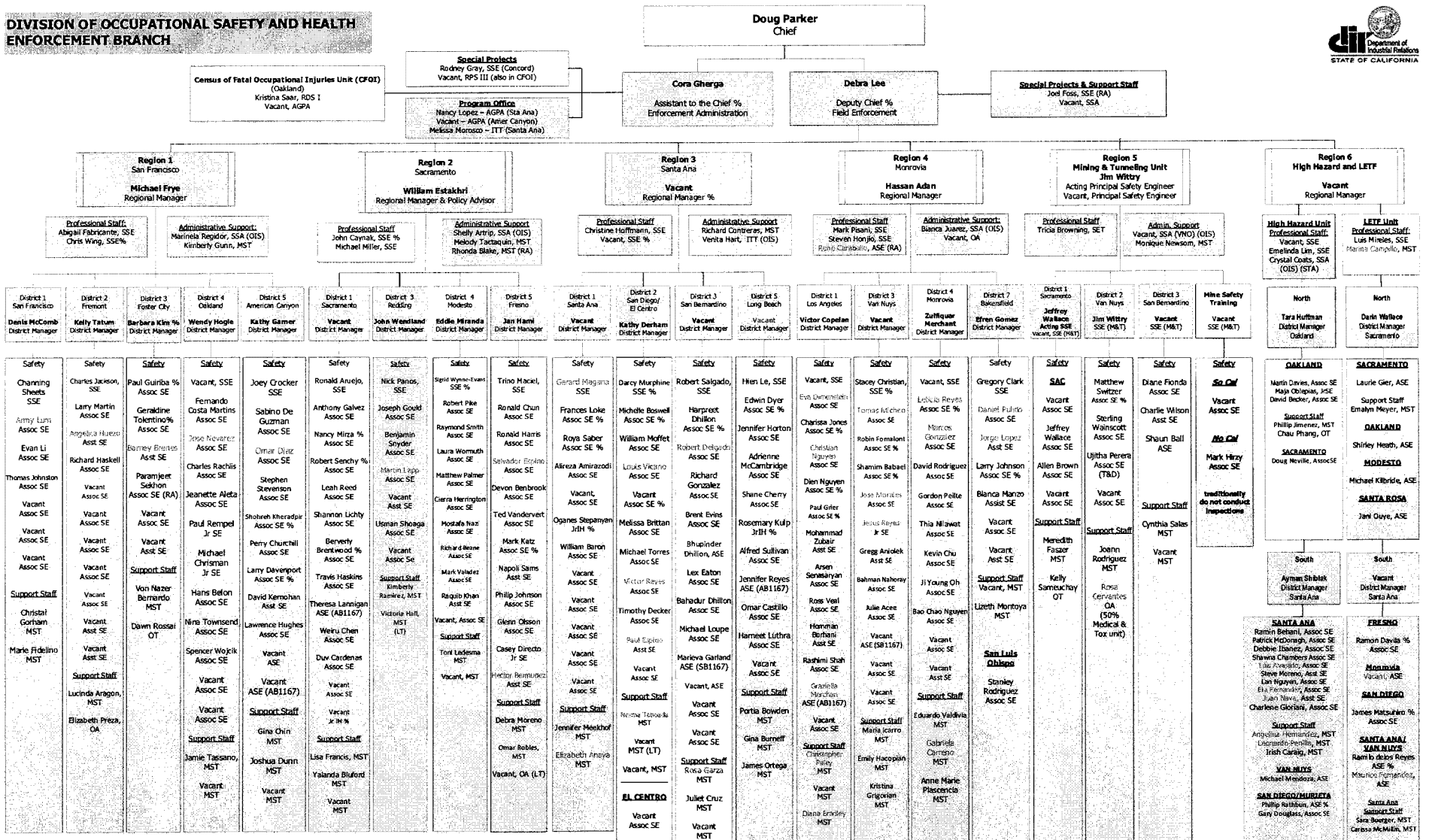
Red font denotes employees receiving bilingual pay  
 % = current or formerly IH

**DIVISION OF OCCUPATIONAL SAFETY AND HEALTH  
ADMINISTRATIVE SERVICES, LEGAL UNIT, AND BUREAU OF INVESTIGATIONS**

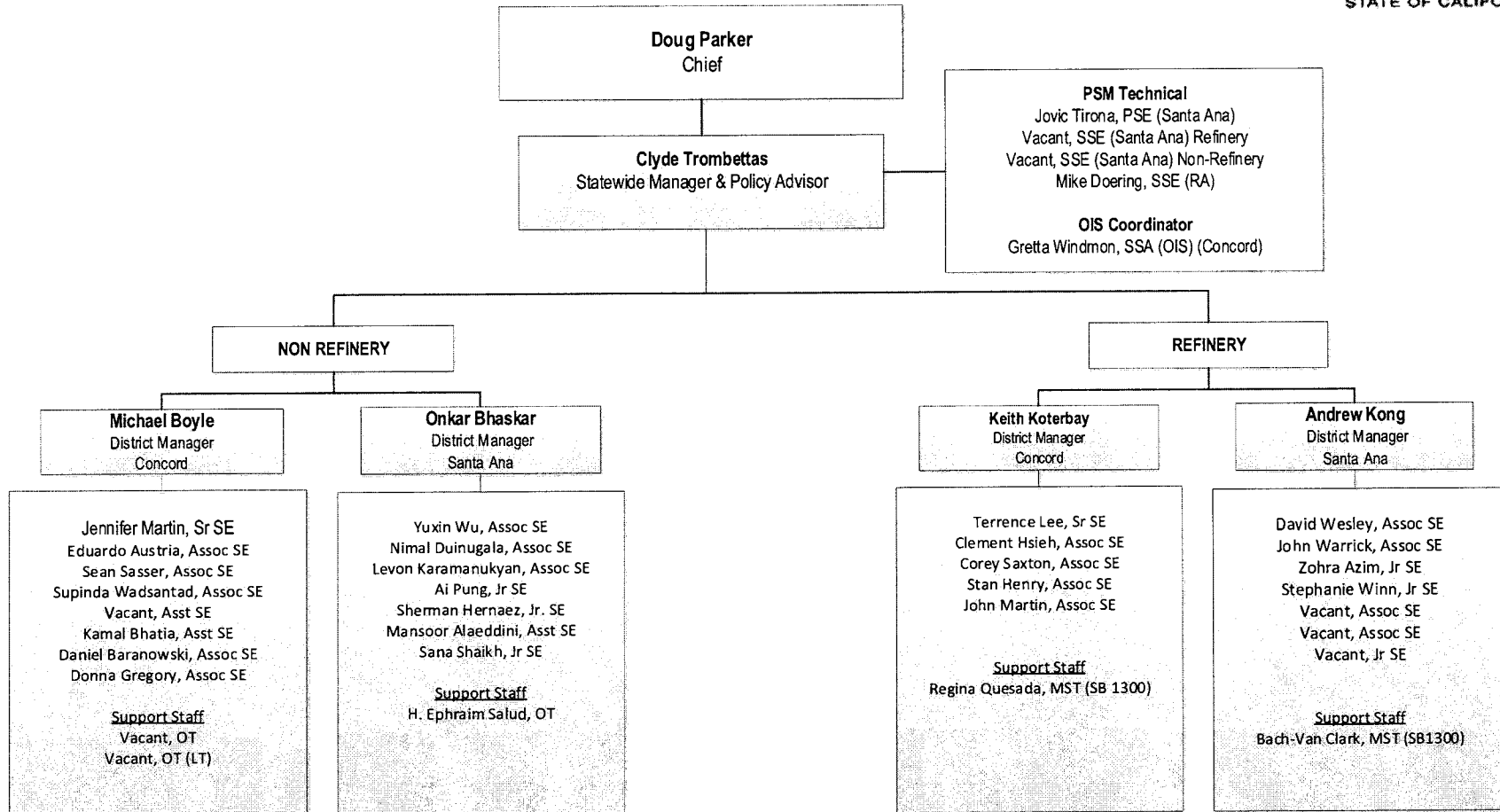


Red font denotes bilingual pay

**DIVISION OF OCCUPATIONAL SAFETY AND HEALTH  
ENFORCEMENT BRANCH**

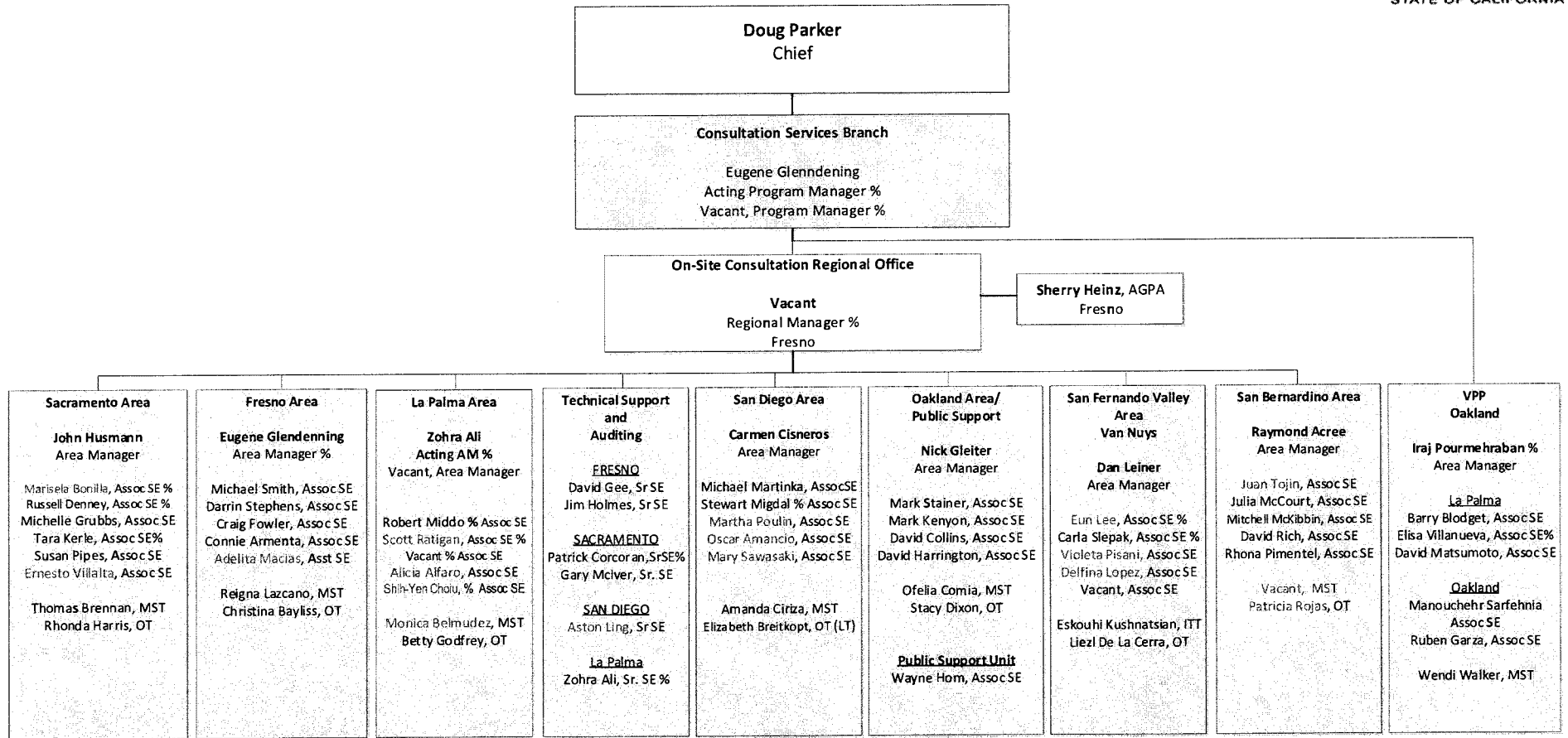


**DIVISION OF OCCUPATIONAL SAFETY AND HEALTH  
ENFORCEMENT BRANCH - PROCESS SAFETY MANAGEMENT UNIT**



Red font denotes employees receiving bilingual pay

**Division of Occupational Safety and Health  
Consultation Services Branch**



Red font denotes employees receiving bilingual pay  
% = current or formerly IH

Revised 6/15/2020

**Division of Occupational Safety and Health  
Elevator Unit, Amusement Ride and Tramway Unit,  
and Pressure Vessel Unit**



**Doug Parker  
Chief**

**Elevator Unit  
Vacant  
Principal SE, ERT (San Jose)**

**Amusement Ride and Tramway Unit  
Nancy Medeiros  
Regional Manager**

**Pressure Vessel Unit  
Vacant  
Principal Safety Engineer  
Jovita Boitano, SSA**

**Engineering Svc  
Santa Ana**  
  
Vacant, SRSE  
D. Morris, SRSE  
(Monrovia)  
Jonna Eggl, MST

**Monrovia**  
E. Hoover, SRSE  
R. Arnett, ASE  
K. Brauer, ASE  
R. Gras, ASE  
T. Navarro, ASE  
R. De Leon, ASE  
S. Gras, ASE  
W. Vallette, ASE  
P. McElvain, ASE  
H. Kurdian, ASE  
J. Ceja, ASE  
R. Hodgkins, ASE  
S. Varcia, ASE  
  
M. Sahagun, MST  
Y. Nakoud, OT  
K. Chan, MST  
M. Dayrit, MST  
E. Sievert, OA (RA)

**Sacramento**  
Vacant, Sr. SE  
R. Bisnett, ASE  
J. Goonan, ASE  
L. Harris, ASE  
C. Hiscott, ASE  
S. Naiman, ASE  
M. Lawson, ASE  
N. Fuller, ASE  
J. Ruth, ASE  
R. Ovalle, ASE  
L. Dolin, ASE  
K. Weinstein, ASE  
S. Williams, ASE (RA)  
  
M. Chow, MST  
A. Francis, OT  
Statewide Invoicing  
C. Moore, MST

**Oakland**  
D. Henderson, SRSE  
J. Bernardi, ASE  
G. Gonzalez, ASE  
J. Moore, ASE  
P. Namjouy, ASE  
A. Rutherford, ASE  
J. Stafford, ASE  
C. Tsingis, ASE  
J. Canals, ASE  
D. De Marta, ASE  
J. Stiles, ASE  
J. Gonzalez, ASE  
F. Huang, ASE (RA)  
Vacant, ASE\*  
  
**San Francisco**  
L. Swerrie, Sr SE  
D. Gee, ASE  
E. Peralta, ASE  
B. Tuck, ASE  
V. Wong, ASE  
A. Fernandez, ASE  
L. McManus, ASE  
D. McIntosh, ASE  
A. Ricarte, ASE  
Vacant, ASE  
Vacant, ASE  
  
Support Staff  
M. Cheung, MST  
T. Farber, MST  
J. Joimer, OT  
Brooke Conry, OA  
Vacant, OT

**Tramway  
Sacramento**  
Vacant, SrSE (T&D)  
Marc Sherrill, ASE  
M. Schopfer, ASE  
  
Nicholas Fester, OT

**PAR  
Santa Ana**  
Bobby Park, Sr SE  
B. Taylor, ASE  
R. Farr, ASE  
T. Koczwarra, ASE  
M. Schuller, ASE  
  
Donna Roberts, MST  
  
**Santa Ana  
(Sacramento TAR)**  
Kelley Roberts, ASE  
Glenn Miyoshi, ASE

**TAR/PAR  
Sacramento**  
S. Prather, Sr SE  
D. Campi, ASE  
J. Denny, ASE  
Vacant, ASE  
  
Dawnetta Rouw, MST  
W. McFall, OT  
M. Quintero, OT  
  
Certification  
Vacant, OT

**Oakland**  
L. Tong, SrSE  
M. Davidian, SrSE  
  
D. Smith, ASE  
M. Coelho, ASE  
M. White, ASE  
M. Akeffo, ASE  
J. Stokes, ASE  
A. Dao, ASE  
M. Shandor, ASE  
Vacant, ASE  
Vacant, ASE  
Vacant, ASE

**Santa Ana/Bakersfield**  
G. Teel, SrSE  
Nestor Garcia, SrSE  
  
E. Capalla, ASE  
J. Anderson, ASE  
J. Mara, ASE  
J. Little, ASE  
Vacant, ASE  
R. Dyk, ASE  
X. Fang, ASE  
Wilbert Lacambra, ASE  
Vincent Bethel, ASE  
Claudia Fair, ASE  
Hugo Gonzalez, ASE  
Vacant, ASE

**San Diego**  
Vacant, Sr. SE  
M. Hazanwala, ASE  
J. Humphrey, ASE  
H. Richter, ASE  
S. Smith, ASE  
G. McAbee, ASE  
R. Burnett, ASE  
D. Crawford, ASE  
G. Stucky, ASE  
M. Wickens, ASE  
K. Stein, ASE  
N. Robison, ASE  
P. Goodwin, ASE  
  
H. Harris, MST  
A. Burriss, OA  
Vacant, OT

**San Bernardino**  
W. Winfield, SrSE  
N. Chua, ASE  
J. Foster, ASE  
K. London, ASE  
J. Talak, ASE  
J. Turner, ASE  
D. Barachkov, ASE  
J. Nicasio, ASE  
D. Nicholson, ASE  
E. Bonty, ASE  
Vacant, ASE  
  
C. Payan, MST  
D. Dailey, OA  
Vacant, OA

**Santa Ana**  
Vacant, Sr. SE  
R. Cordova, ASE  
P. Lacsamana, ASE  
D. Mestayer, ASE  
K. Palma, ASE  
J. Zolotoff, ASE  
R. Lawson, ASE  
K. Jones, ASE  
M. Coletto, ASE  
J. Simon, ASE  
M. Gaynor, ASE  
L. Stevens, ASE  
D. Scott, ASE  
G. McDonald, ASE  
  
Vacant, MST  
M. Sepulveda, OT  
B. Martinez, OT

**San Jose**  
A. Gonzalez, SRSE  
D. Piccolo, ASE  
K. Wen, ASE  
D. Wong, ASE  
R. Sterner, ASE  
J. Rollof, ASE  
K. Zaya, ASE  
C. Covarrubias, ASE  
D. Wallace, ASE  
Vacant, ASE  
  
M. Vinoya, MST  
P. Baker, MST  
Vacant, OT\*  
Vacant, OT (LT)

\* denotes half time

Red font denotes employees receiving bilingual pay

Revised 6/12/2020