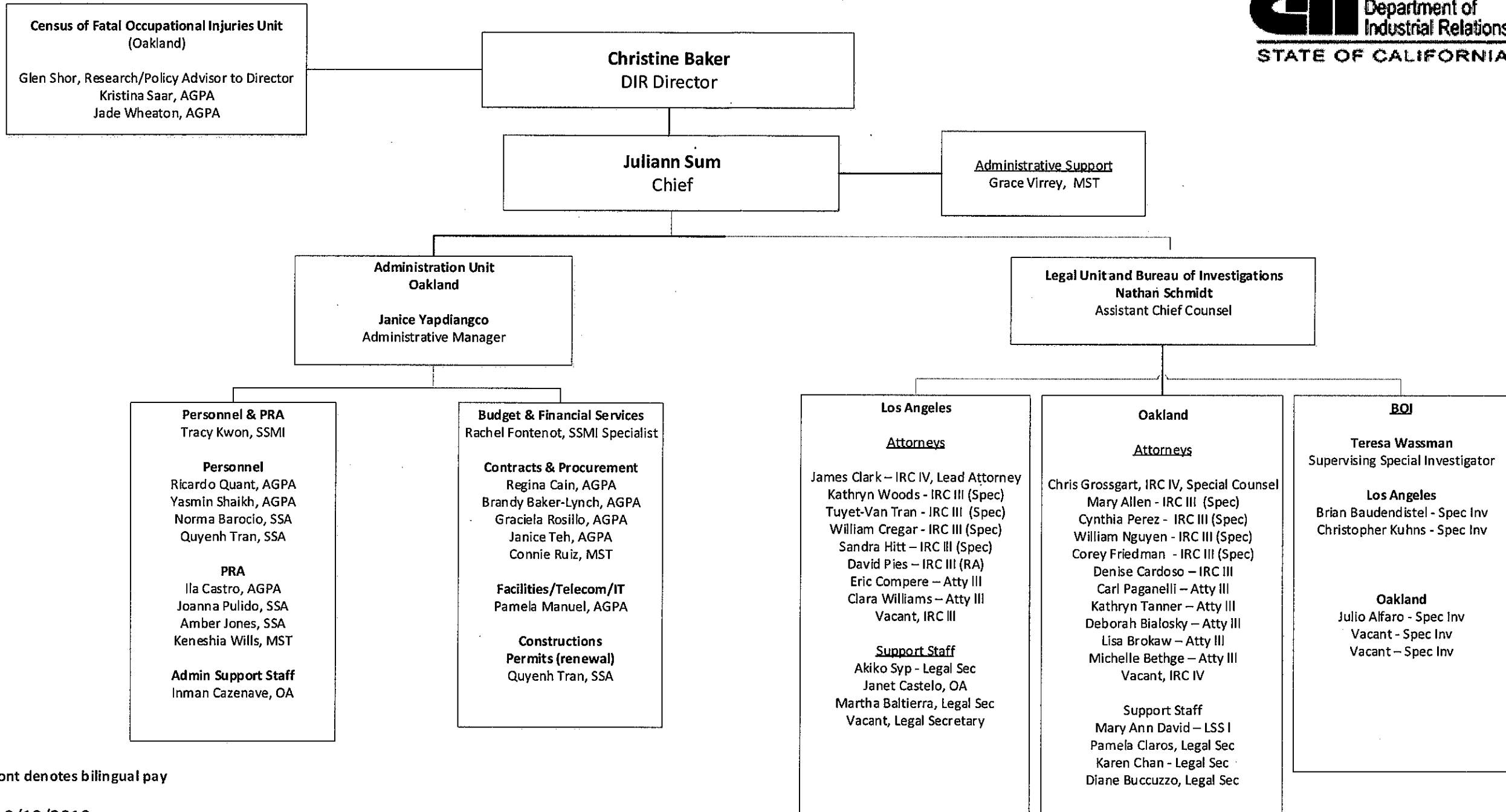
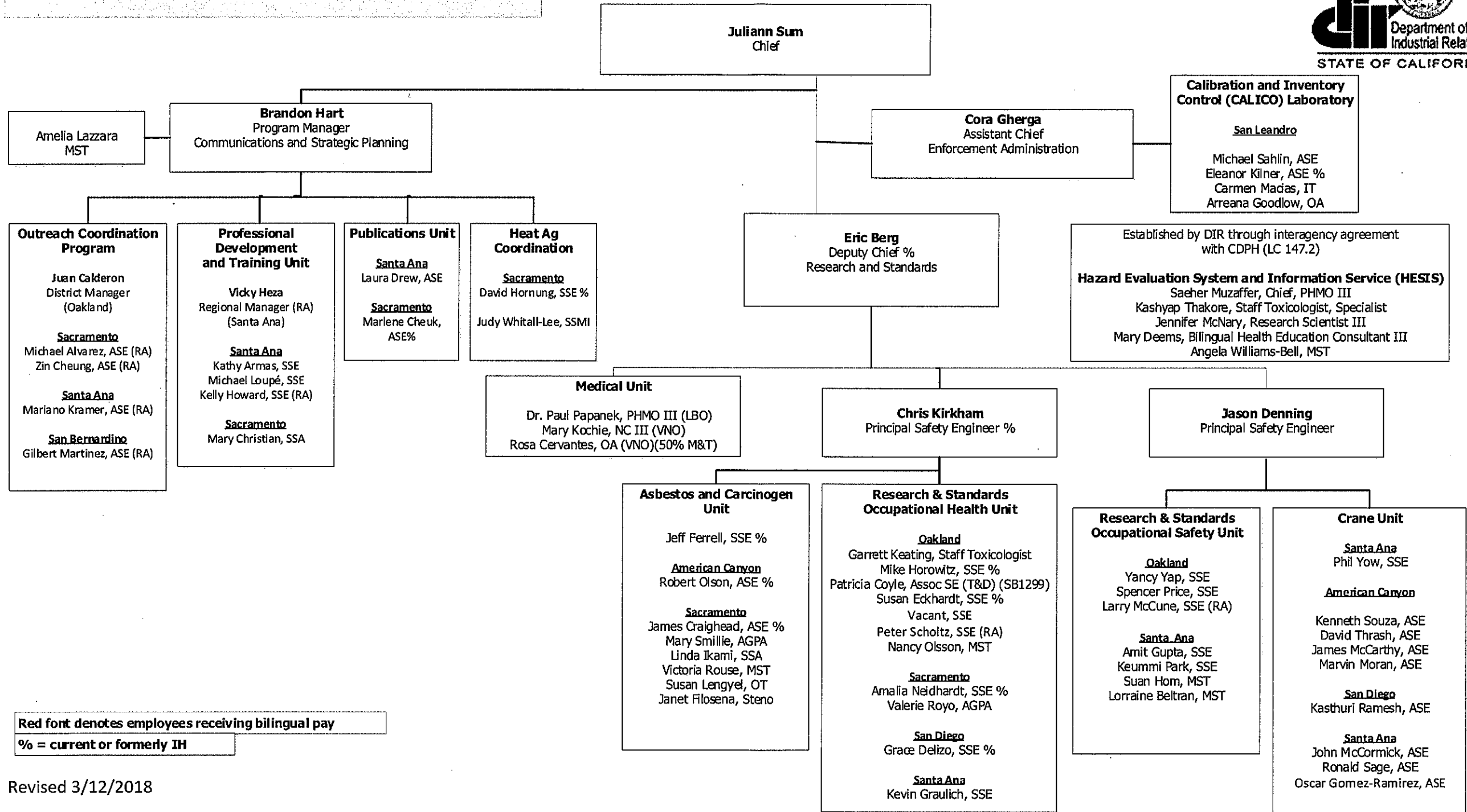


**DIVISION OF OCCUPATIONAL SAFETY AND HEALTH  
ADMINISTRATION/LEGAL-BOI**



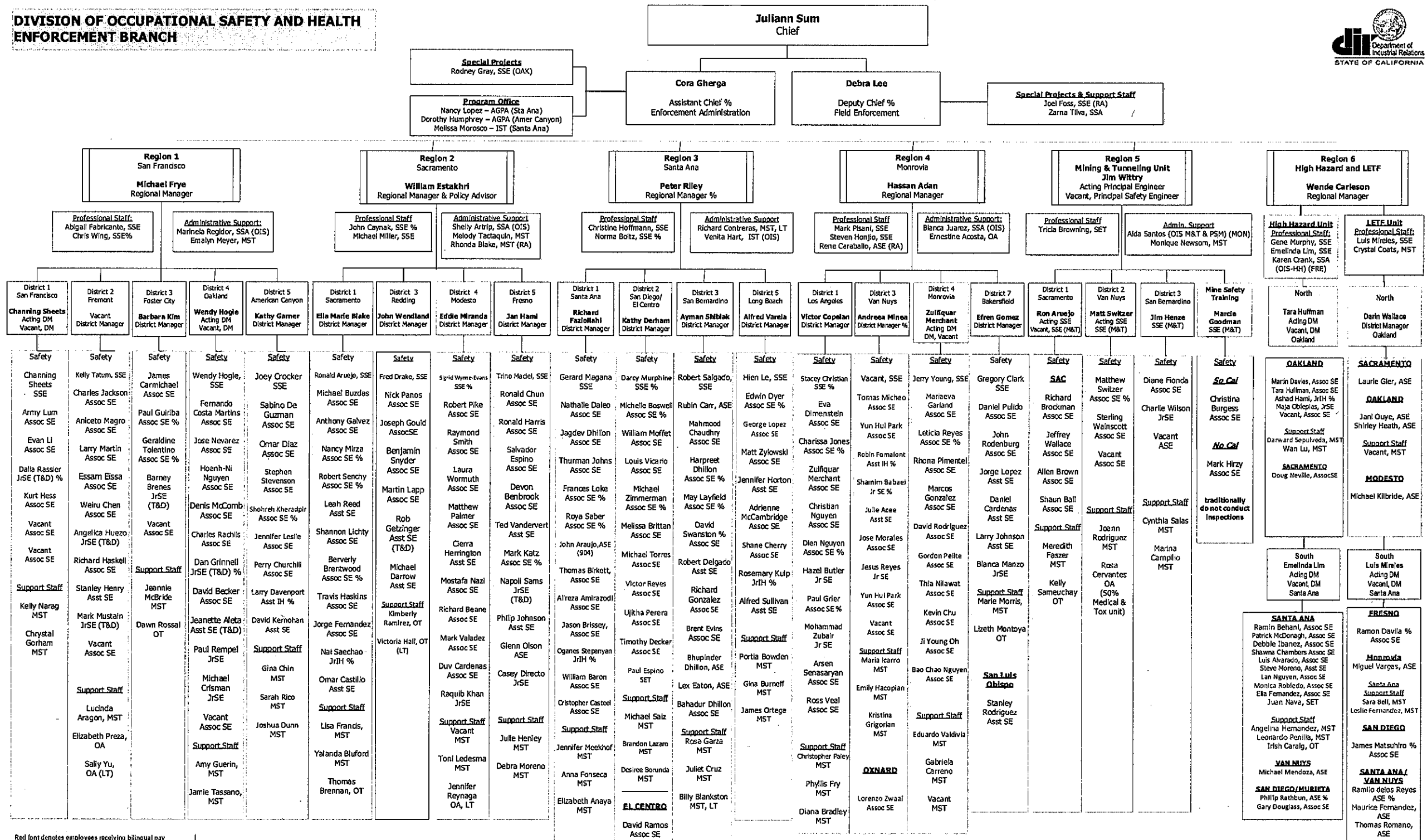
Red font denotes bilingual pay

**Division of Occupational Safety and Health  
Health, Safety, Medical, and Communications**



Red font denotes employees receiving bilingual pay  
% = current or formerly IH

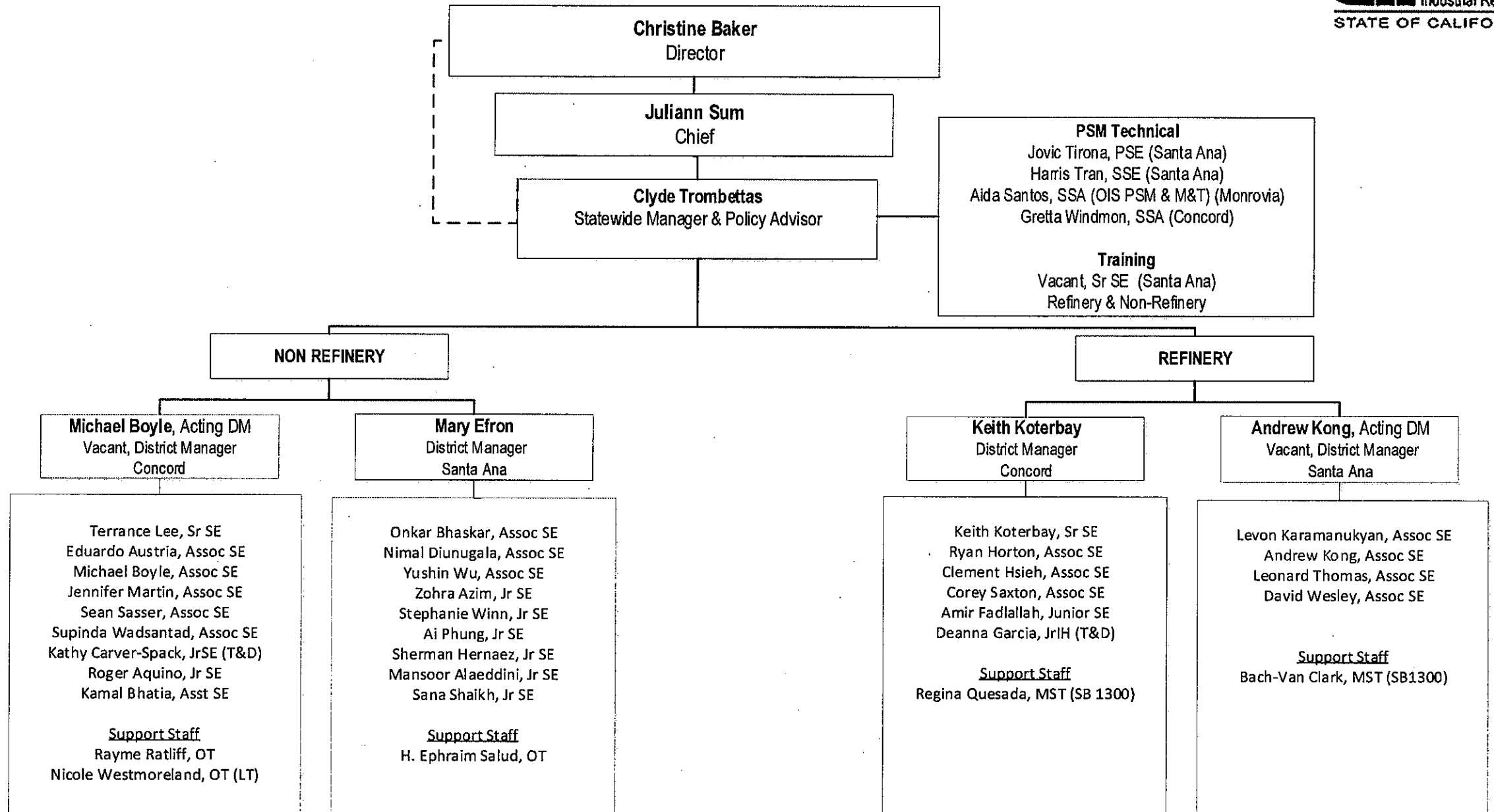
**DIVISION OF OCCUPATIONAL SAFETY AND HEALTH  
ENFORCEMENT BRANCH**



Red font denotes employees receiving bilingual pay  
% = current or previously III

PE – Principal Safety Engineer; RM – Regional Manager; DM – District Manager; SSE – Senior Safety Engineer; Assoc SE / ASE – Associate Safety Engineer; Asst SE – Assistant Safety Engineer; SET – Safety Engineer Technician; JrSE – Junior Safety Engineer; SSJM – Staff Services Manager; AGPA – Associate Governmental Program Analyst; SSA – Staff Services Analyst; MST – Management Services Tech; IST – Information System Tech; OT – Office Tech; OA – Office Assistant; RA – Retired Annuitant; T&D – Training and Development; TAU – Temporary Authorization Appointment

**DIVISION OF OCCUPATIONAL SAFETY AND HEALTH  
ENFORCEMENT BRANCH - PROCESS SAFETY MANAGEMENT (PSM) UNIT**



Red font denotes employees receiving bilingual pay

**Division of Occupational Safety and Health**  
**Public Safety / Engineering**



**Juliann Sum**  
 Chief

**Elevator Unit**

**Debra Tudor**  
 Principal Safety Engineer, ERT (San Jose)

**Engineering Svc**  
 Santa Ana

J. Afrooz, SRSE  
 D. Morris, SRSE  
 (Monrovia)  
 Jonna Eggl, MST

**Certification**  
 Sacramento  
 M. Lockett, SSA  
 A. Postnikoff, MST

**Special Projects**  
 D. Barker, SRSE (SD)  
 S. Miley, SRSE (SD)  
 M. Shields, SRSE (SD)

**Monrovia**

E. Hoover, SRSE  
 R. Arnott, ASE  
 K. Brauer, ASE  
 R. Gras, ASE  
 T. Navarro, ASE  
 R. De Leon, ASE  
 S. Gras, ASE  
 W. Vallette, ASE  
 P. McElvain, ASE  
 H. Kurdian, ASE  
 J. Ceja, ASE  
 R. Hodgkins, ASE  
 S. Variag, ASE  
 Vacant, ASE  
 M. Sahagun, MST  
 L. Papazian, MST  
 Y. Nakoud, MST  
 K. Chan, MST  
 E. Sievert, OA (RA)

**Sacramento**

L. Harris, Acting SRSE  
 Vacant, SRSE  
 R. Bisnett, ASE  
 J. Goonan, ASE  
 L. Harris, ASE  
 C. Hiscott, ASE  
 S. Naiman, ASE  
 M. Lawson, ASE  
 N. Fuller, ASE  
 J. Ruth, ASE  
 R. Ovalle, ASE  
 L. Dolin, ASE  
 K. Weinstein, ASE  
  
 M. Chow, MST  
 Vacant, OA  
 A. Francis, OT (LT)  
  
Statewide Invoicing  
 C. Moore, MST

**Oakland**

D. Henderson, SRSE  
 J. Bernardi, ASE  
 G. Gonzalez, ASE  
 P. Green, ASE  
 J. Moore, ASE  
 P. Namjouy, ASE  
 J. Petri, ASE  
 A. Rutherford, ASE  
 J. Stafford, ASE  
 C. Tsingis, ASE  
 J. Canals, ASE  
 D. De Marta, ASE  
 J. Stiles, ASE  
 J. Gonzalez, ASE  
 Vacant, ASE\*  
  
**San Francisco**  
 L. Swerrie, SRSE  
 P. Boyd, ASE  
 D. Gee, ASE  
 E. Peralta, ASE  
 B. Tuck, ASE  
 V. Wong, ASE  
 A. Fernandez, ASE  
 Vacant, ASE  
 Vacant, ASE  
 Vacant, ASE  
 Vacant, ASE

Support Staff  
 M. Cheung, MST  
 T. Farber, MST  
 A. Reeser, OT  
 Abel Posten, OT  
 Brooke Conry, OA

**Amusement Ride and Tramway Unit**

**Bobby Park**  
 Acting Regional Manager (Santa Ana)  
 Vacant, Regional Manager

**Tramway**  
 Sacramento

Nancy Medeiros, SSE (RA)  
 Vacant, SrSE  
 Marc Sherrill, ASE  
 M. Schopfer, ASE  
  
 Lindsey Stocksill, OT

**PAR**  
 Santa Ana

Kelley Roberts, Acting Sr SE  
 Bobby Park, Sr SE  
 B. Taylor, ASE  
 R. Farr, ASE  
 T. Koczwara, ASE  
 M. Schuller, ASE  
  
 Donna Roberts, MST  
 Randell Dennewitz, OT(LT)

**Santa Ana**  
 (Sacramento TAR)

Kelley Roberts, ASE  
 Glenn Miyoshi, ASE  
 Vacant, ASE

**TAR/PAR**  
 Sacramento

S. Prather, Sr SE  
 M. King, ASE  
 D. Campi, ASE  
 J. Denny, ASE  
  
 Dawnetta Rouw, MST  
 W. McFall, OT  
 M. Quintero, OT  
  
Certification  
 K. Sellers, OT

**Pressure Vessel Unit**

**Don Cook**  
 Principal Safety Engineer (Oakland)  
  
 Jovita Boitano, SSA

**Oakland**

L. Tong, SrSE  
 M. Davidian, SrSE  
  
 B. Sherman, ASE  
 D. Smith, ASE  
 M. Coelho, ASE  
 M. White, ASE  
 M. Akeffo, ASE  
 P. Schoch, ASE  
 W. Goff, ASE  
 J. Stokes, ASE  
 A. Dao, ASE  
 M. Shandor, ASE  
 Vacant, ASE  
 D. Ethier, ASE (RA)  
 M. Brush, ASE (RA)

Support Staff  
 R. Miranda, MST  
 T. Milkkeisen, OT  
 A. Barwela, OA

**Santa Ana/Bakersfield**

G. Teel, SrSE  
 N. Garcia, SrSE  
  
 E. Capalla, ASE  
 J. Anderson, ASE  
 J. Mara, ASE  
 J. Little, ASE  
 P. Gee, ASE  
 R. Dyk, ASE  
 T. Setterlund, ASE  
 X. Fang, ASE  
 Wilbert Lacambra, ASE  
 Vincent Bethel, ASE  
 Claudia Heflin, ASE  
 Hugo Gonzalez, ASE

Support Staff  
 Vacant, MST  
 B. Ongpauco, MST

**San Diego**

D. Kieferdort, SRSE  
 M. Hazariwala, ASE  
 J. Humphrey, ASE  
 H. Richter, ASE  
 S. Smith, ASE  
 G. McAbee, ASE  
 R. Burnett, ASE  
 D. Schmaltz, ASE  
 D. Crawford, ASE  
 G. Stucky, ASE  
 M. Wickens, ASE  
 K. Stein, ASE  
 Vacant, ASE  
 Vacant, ASE  
 H. Harris, MST  
 J. Ho, OT  
 A. Burruss, OA

**San Bernardino**

W. Winfield, SRSE  
 N. Chua, ASE  
 J. Foster, ASE  
 K. London, ASE  
 J. Talak, ASE  
 J. Turner, ASE  
 D. Barachkov, ASE  
 J. Nicasio, ASE  
 D. Nicholson, ASE  
 E. Bonty, ASE  
 Vacant, ASE  
  
 C. Payan, MST  
 D. Austin, OA  
 D. Dailey, OA

**Santa Ana**

S. Singleton, SRSE  
 R. Cordova, ASE  
 P. Lacsamana, ASE  
 D. Mestayer, ASE  
 K. Palma, ASE  
 J. Zolotoff, ASE  
 R. Lawson, ASE  
 K. Jones, ASE  
 M. Coletto, ASE  
 J. Simon, ASE  
 M. Gaynor, ASE  
 L. Stevens, ASE  
 D. Scott, ASE  
 Vacant, ASE  
  
 C. Gusman, MST  
 M. Sepulveda, OT  
 Vacant, OT

**San Jose**

A. Gonzalez, SRSE  
 D. Piccolo, ASE  
 K. Wen, ASE  
 D. Wong, ASE  
 R. Sterner, ASE  
 J. Rollof, ASE  
 K. Zaya, ASE  
 Vacant, ASE  
 Vacant, ASE  
  
 M. Vinoya, MST  
 P. Baker, MST  
 Kirsten Votaw, OT\*  
 Vacant, OT (LT)

\* denotes half time

Red font denotes employees receiving bilingual pay

**Division of Occupational Safety and Health  
 Consultation Services Branch**



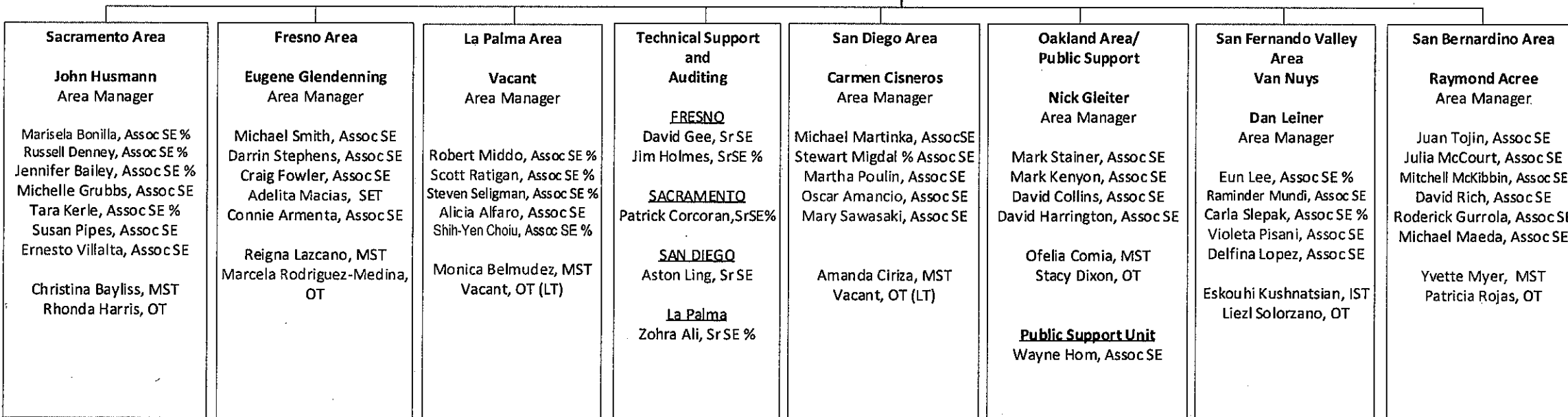
**Juliann Sum**  
 Chief

**Eugene Glendenning**  
 Acting Program Manager  
 Consultation Services Program Office

**On-Site Consultation Regional Office**  
**Jim Lopes**  
 Regional Manager  
 Fresno

**Sherry Heinz, AGPA**  
 Fresno

**VPP**  
**Oakland**  
**Iraj Pourmehraban**  
 Area Manager %  
La Palma  
 Barry Blodget, Assoc SE  
 Elisa Villanueva, Assoc SE %  
 David Matsumoto, Assoc SE  
Oakland  
 Manouchehr Sarfehnia  
 Assoc SE  
 Ruben Garza, Assoc SE  
 Wendi Walker, MST  
**VPP – Construction**  
Sacramento  
 Gary McIver, Sr SE



Red font denotes employees receiving bilingual pay

% = current or formerly IH