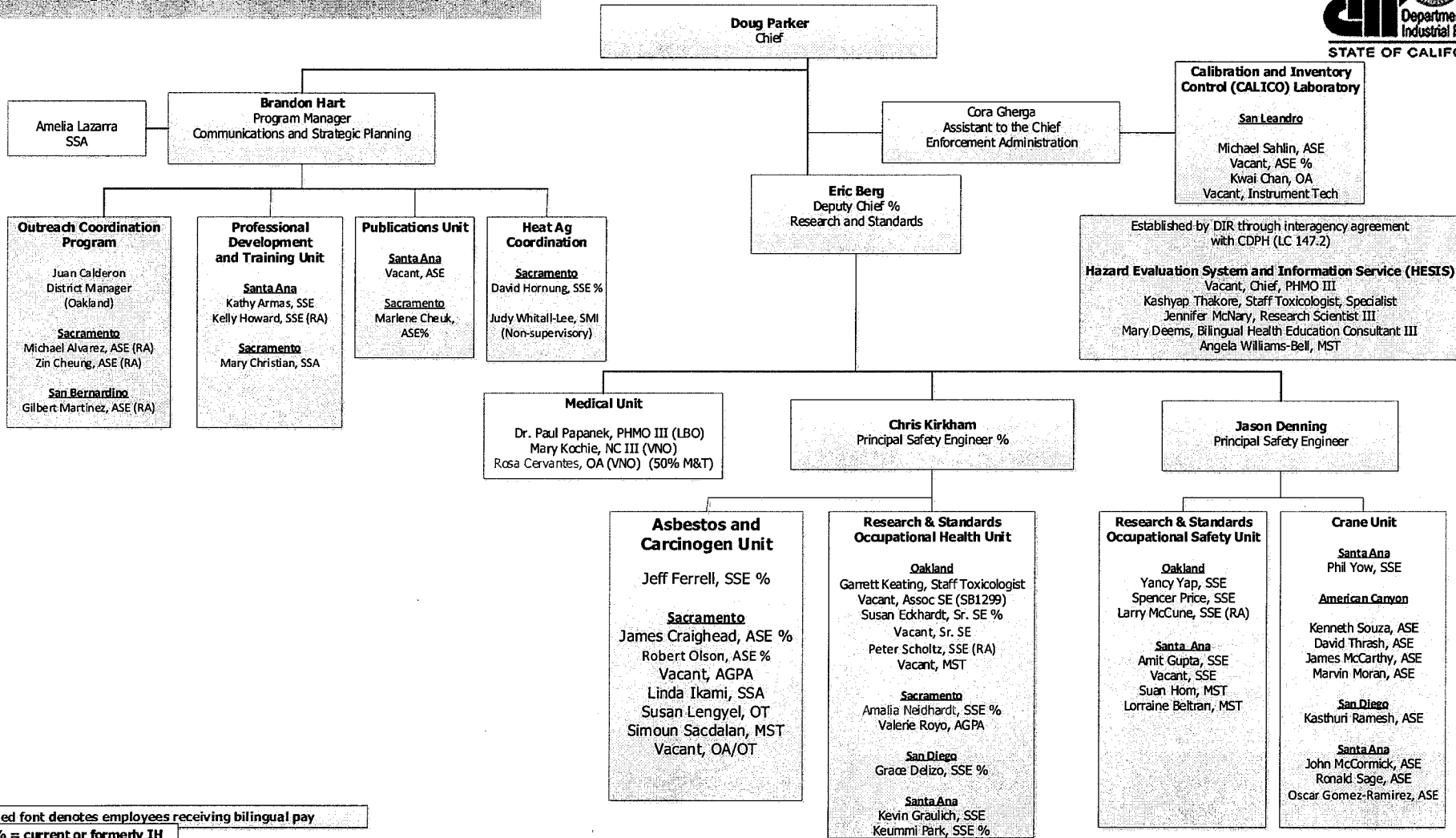
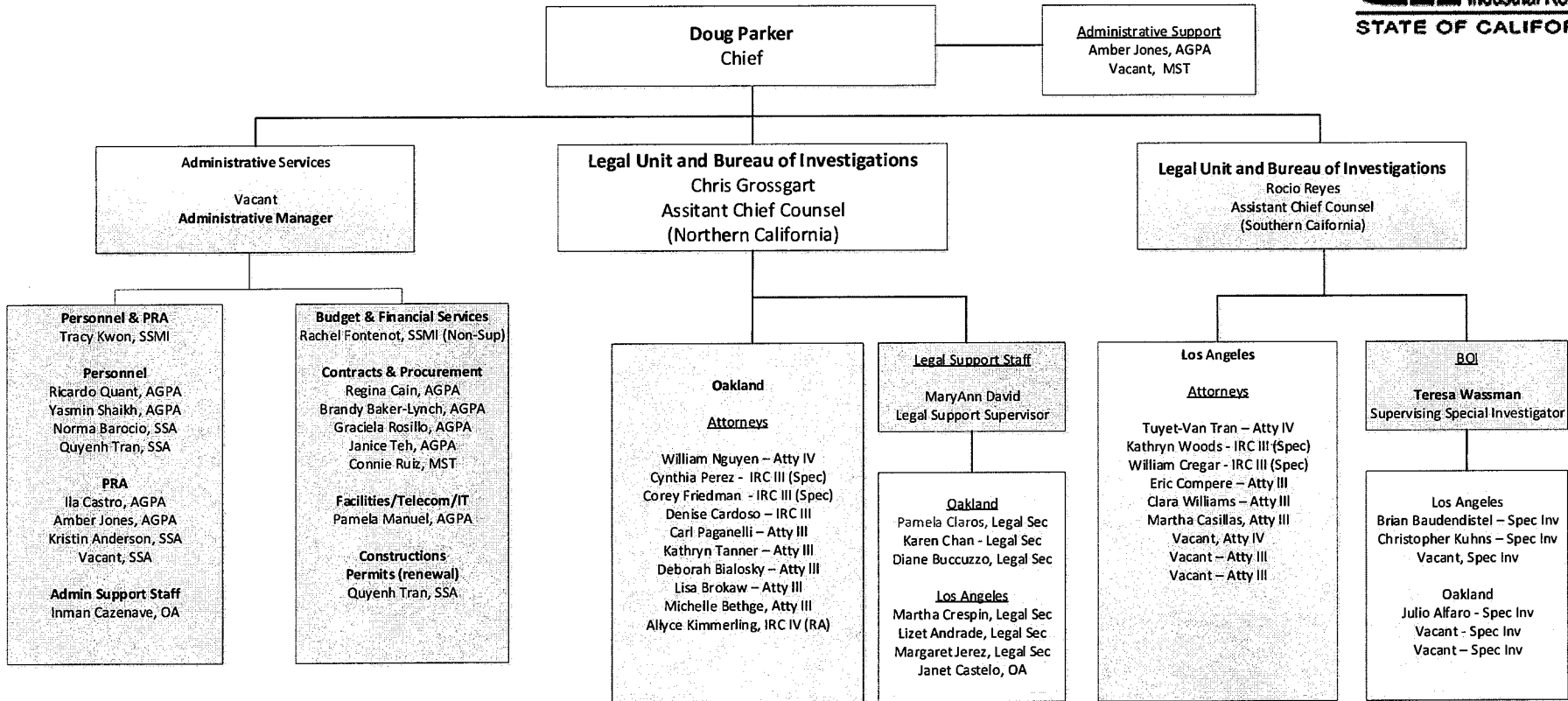


**Division of Occupational Safety and Health
 Communications, Research and Standards, Medical Unit, Asbestos
 and Carcinogen Unit, Crane Unit, and CALICO Laboratory**



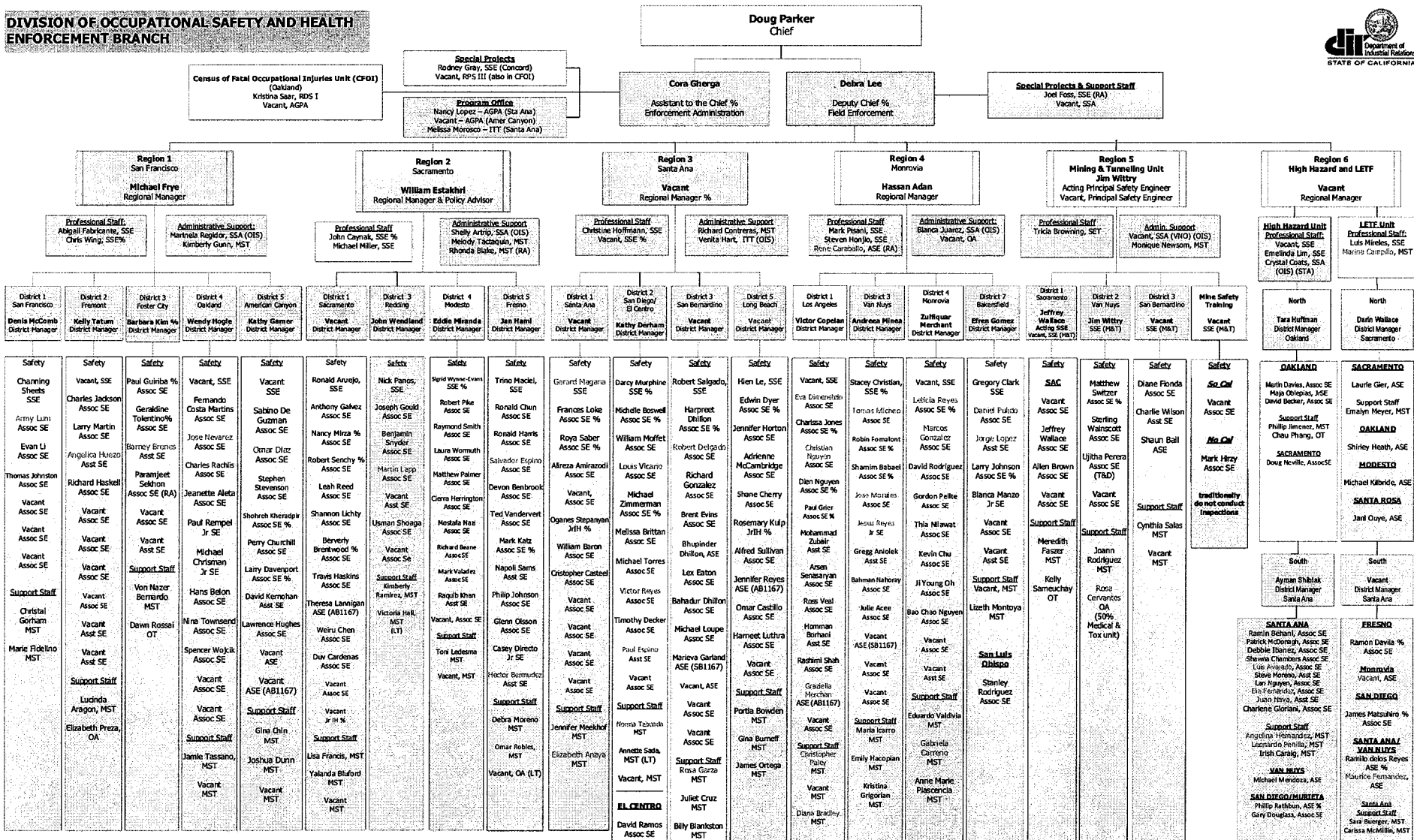
Red font denotes employees receiving bilingual pay
 % = current or formerly IH

**DIVISION OF OCCUPATIONAL SAFETY AND HEALTH
ADMINISTRATIVE SERVICES, LEGAL UNIT AND BUREAU OF INVESTIGATIONS**



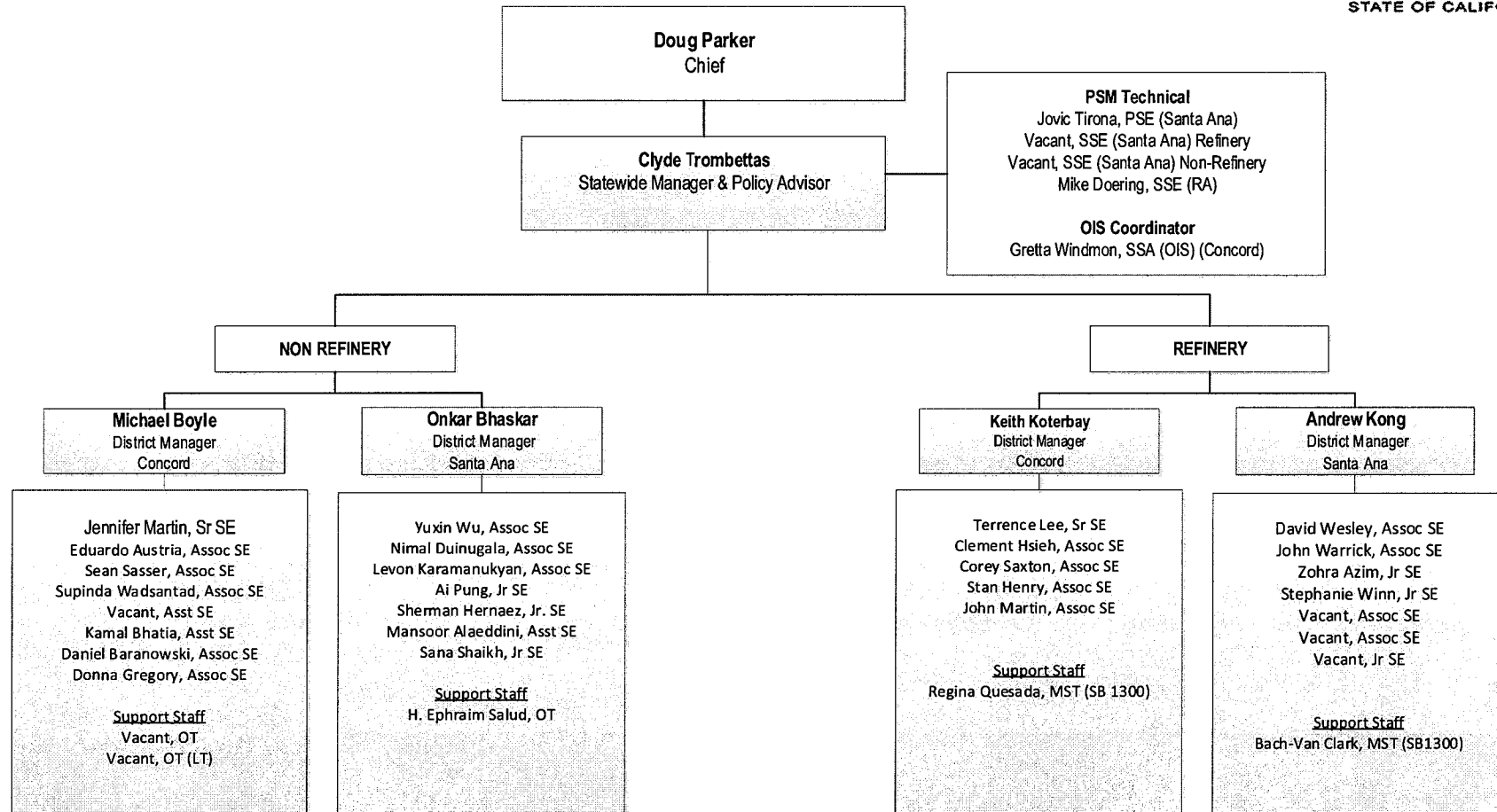
Red font denotes bilingual pay

**DIVISION OF OCCUPATIONAL SAFETY AND HEALTH
ENFORCEMENT BRANCH**



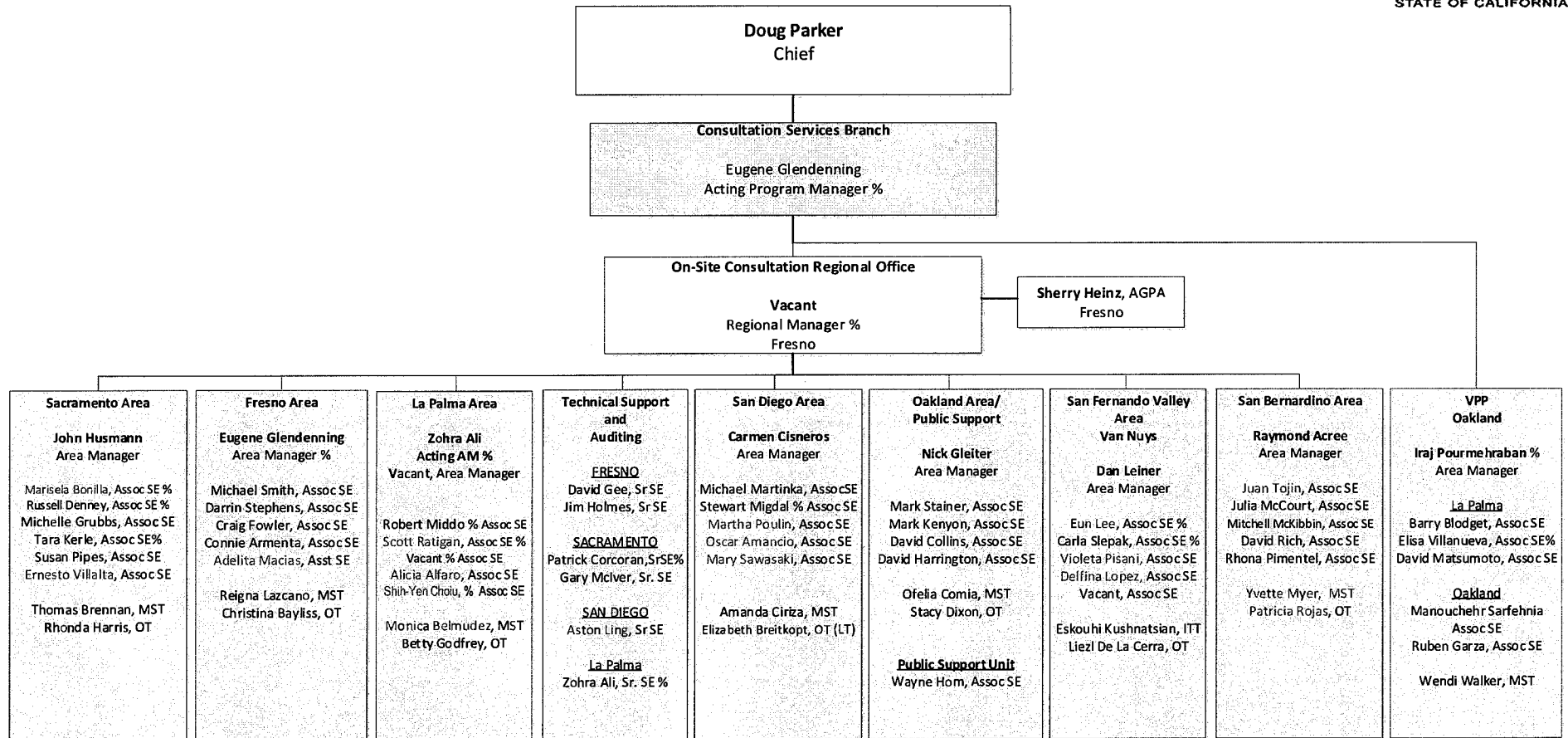
Red text denotes emp/yrns receiving bilingual pay
% = current or previously IH

**DIVISION OF OCCUPATIONAL SAFETY AND HEALTH
ENFORCEMENT BRANCH - PROCESS SAFETY MANAGEMENT UNIT**



Red font denotes employees receiving bilingual pay

**Division of Occupational Safety and Health
Consultation Services Branch**



Red font denotes employees receiving bilingual pay

% = current or formerly IH

Revised 3/4/2020

**Division of Occupational Safety and Health
Elevator Unit, Amusement Ride and Tramway Unit,
and Pressure Vessel Unit**



**Doug Parker
Chief**

**Elevator Unit
Vacant
Principal SE, ERT (San Jose)**

**Amusement Ride and Tramway Unit
Nancy Medeiros
Regional Manager**

**Pressure Vessel Unit
Vacant
Principal Safety Engineer
Jovita Boitano, SSA**

**Engineering Svc
Santa Ana**
J. Afrooz, SRSE
D. Morris, SRSE (Monrovia)
Jonna Eggl, MST
**Certification
Sacramento**
M. Lockett, SSA
A. Postnikoff, MST
Special Projects
D. Barker, Sr. SE (SD)
S. Miley, Sr. SE (SD)
M. Shields, ASE (SD)

Monrovia
E. Hoover, SRSE
R. Arnott, ASE
K. Brauer, ASE
R. Gras, ASE
T. Navarro, ASE
R. De Leon, ASE
S. Gras, ASE
W. Vallette, ASE
P. McElvain, ASE
H. Kurdian, ASE
J. Ceja, ASE
R. Hodgkins, ASE
S. Varcagi, ASE

M. Sahagun, MST
Y. Nakoud, OT
K. Chan, MST
M. Dayrit, MST
E. Sievert, OA (RA)

Sacramento
Vacant, Sr. SE
R. Bisnett, ASE
J. Goonan, ASE
L. Harris, ASE
C. Hiscott, ASE
S. Naiman, ASE
M. Lawson, ASE
N. Fuller, ASE
J. Ruth, ASE
R. Ovalle, ASE
L. Dolin, ASE
K. Weinstein, ASE
S. Williams, ASE (RA)

M. Chow, MST
A. Francis, OT
Statewide Invoicing
C. Moore, MST

Oakland
D. Henderson, SRSE
J. Bernardi, ASE
G. Gonzalez, ASE
J. Moore, ASE
P. Namjouy, ASE
A. Rutherford, ASE
J. Stafford, ASE
C. Tsings, ASE
J. Canals, ASE
D. De Marta, ASE
J. Stiles, ASE
J. Gonzalez, ASE
F. Huang, ASE (RA)
Vacant, ASE*

San Francisco
L. Swerrie, SrSE
D. Gcc, ASE
E. Peralta, ASE
B. Tuck, ASE
V. Wong, ASE
A. Fernandez, ASE
L. McManus, ASE
D. McIntosh, ASE
A. Ricarte, ASE
Vacant, ASE
Vacant, ASE

Support Staff
M. Cheung, MST
T. Farber, MST
J. Joiner, OT
Brooke Conry, OA
Vacant, OT

**Tramway
Sacramento**
Vacant, SrSE (T&D)
Marc Sherrill, ASE
M. Schopfer, ASE

Vacant, OT

**PAR
Santa Ana**
Bobby Park, Sr SE
B. Taylor, ASE
R. Farr, ASE
T. Koczwar, ASE
M. Schuller, ASE

Donna Roberts, MST

**Santa Ana
(Sacramento TAR)**
Kelley Roberts, ASE
Glenn Miyoshi, ASE

**TAR/PAR
Sacramento**
S. Prather, Sr SE
D. Campi, ASE
J. Denny, ASE
Vacant, ASE

Dawnetta Rouw, MST
W. McFall, OT
M. Quintero, OT

Certification
K. Sellers, OT

Oakland
L. Tong, SrSE
M. Davidian, SrSE

D. Smith, ASE
M. Coelho, ASE
M. White, ASE
M. Akeffo, ASE
J. Stokes, ASE
A. Dao, ASE
M. Shandor, ASE
M. Brush, ASE (RA)
Vacant, ASE
Vacant, ASE
Vacant, ASE

Support Staff
R. Miranda, MST
T. Milkelsen, MST
A. Barwela, MST

Santa Ana/Bakersfield
G. Teel, SrSE
Nestor Garcia, SrSE

E. Capalla, ASE
J. Anderson, ASE
J. Mara, ASE
J. Little, ASE
P. Gee, ASE
R. Dylk, ASE
X. Fang, ASE
Wilbert Lacambra, ASE
Vincent Bethel, ASE
Claudia Fair, ASE
Hugo Gonzalez, ASE
Vacant, ASE

Support Staff
R. Bates, MST
Vacant, MST

San Diego
Vacant, Sr. SE
M. Hazariwala, ASE
J. Humphrey, ASE
H. Richter, ASE
S. Smith, ASE
G. McAbee, ASE
R. Burnett, ASE
D. Crawford, ASE
G. Stucky, ASE
M. Wickens, ASE
K. Stein, ASE
N. Robison, ASE
P. Goodwin, ASE

H. Harris, MST
A. Burress, OA
Vacant, OT

San Bernardino
W. Winfield, SrSE
N. Chua, ASE
J. Foster, ASE
K. London, ASE
J. Talak, ASE
J. Turner, ASE
D. Barachkov, ASE
J. Nicasio, ASE
D. Nicholson, ASE
E. Bonty, ASE
Vacant, ASE

C. Payan, MST
D. Dailey, OA
Vacant, OA

Santa Ana
Vacant, Sr. SE
R. Cordova, ASE
P. Lacsamana, ASE
D. Mestayer, ASE
K. Palma, ASE
J. Zolotoff, ASE
R. Lawson, ASE
K. Jones, ASE
M. Colette, ASE
J. Simon, ASE
M. Gaynor, ASE
L. Stevens, ASE
D. Scott, ASE
G. McDonald, ASE

C. Gusman, MST
M. Sepulveda, OT
B. Martinez, OT

San Jose
A. Gonzalez, SRSE
D. Piccolo, ASE
K. Wen, ASE
D. Wong, ASE
R. Sterner, ASE
J. Rollof, ASE
K. Zaya, ASE
C. Covarrubias, ASE
D. Wallace, ASE
Vacant, ASE

M. Vinoya, MST
P. Baker, MST
Vacant, OT*
B. Chau-Hau, OT (LT)

* denotes half time
Red font denotes employees receiving bilingual pay