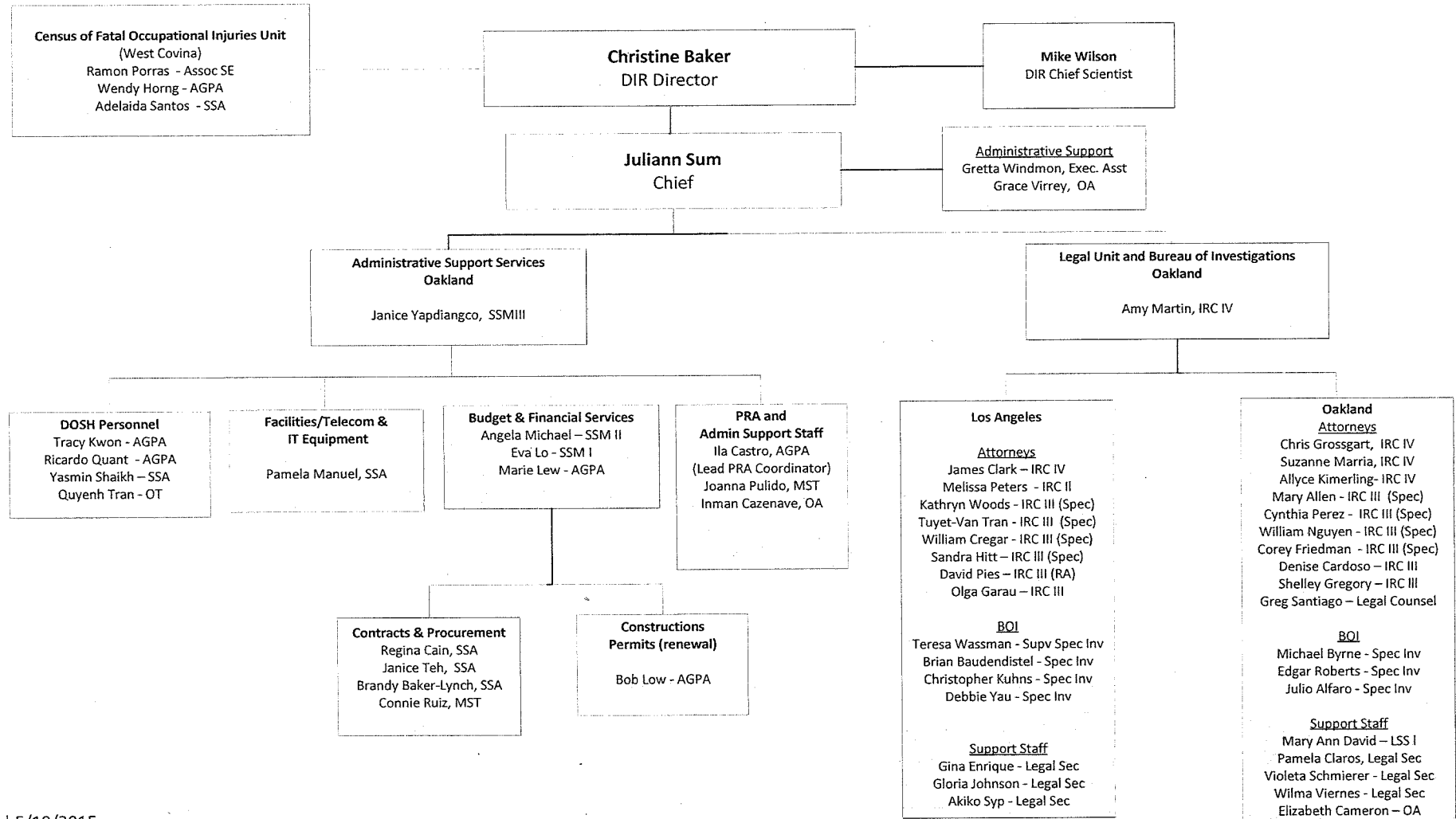
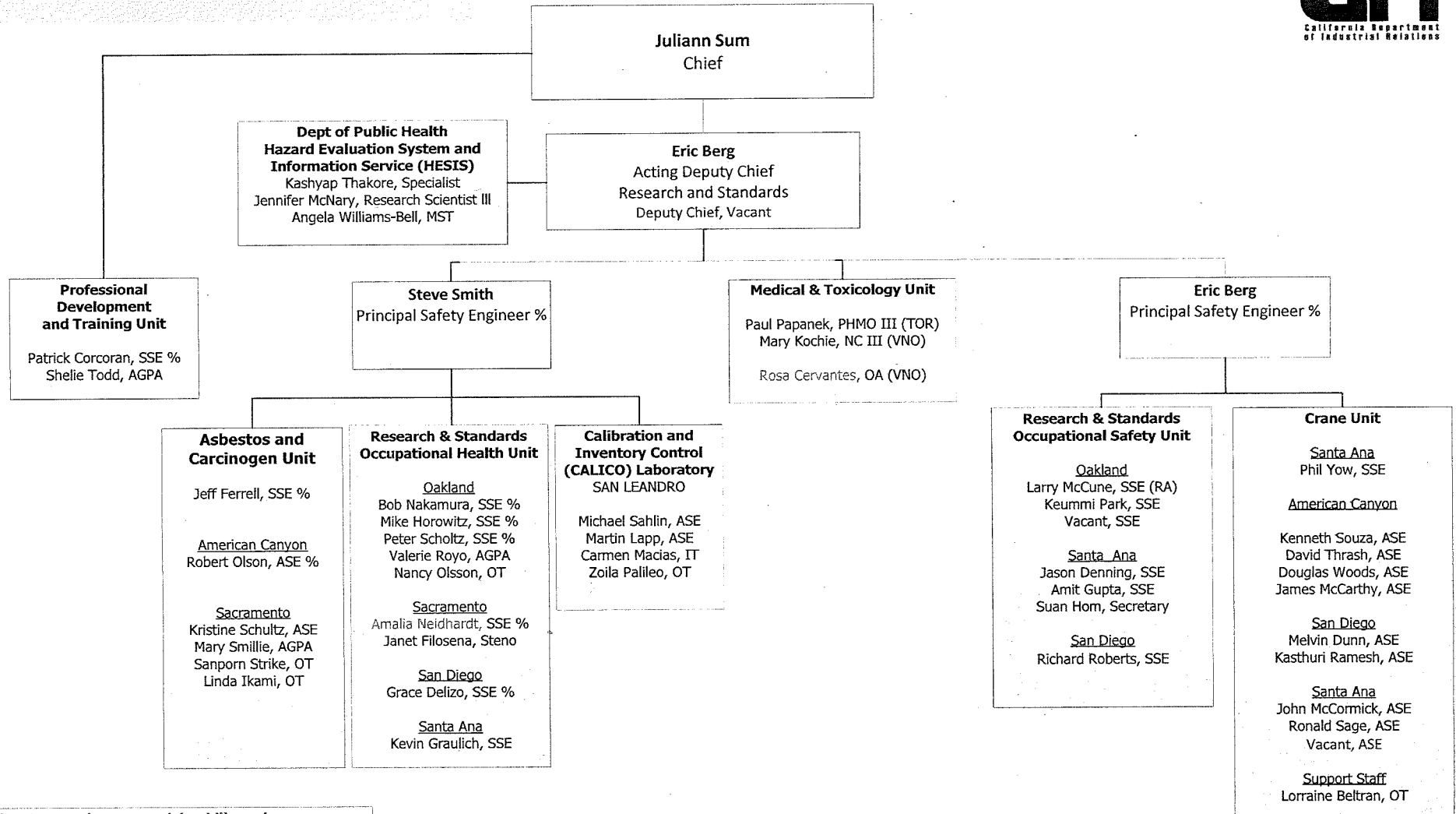


**DIVISION OF OCCUPATIONAL SAFETY AND HEALTH
ADMINISTRATION/LEGAL-BOI**

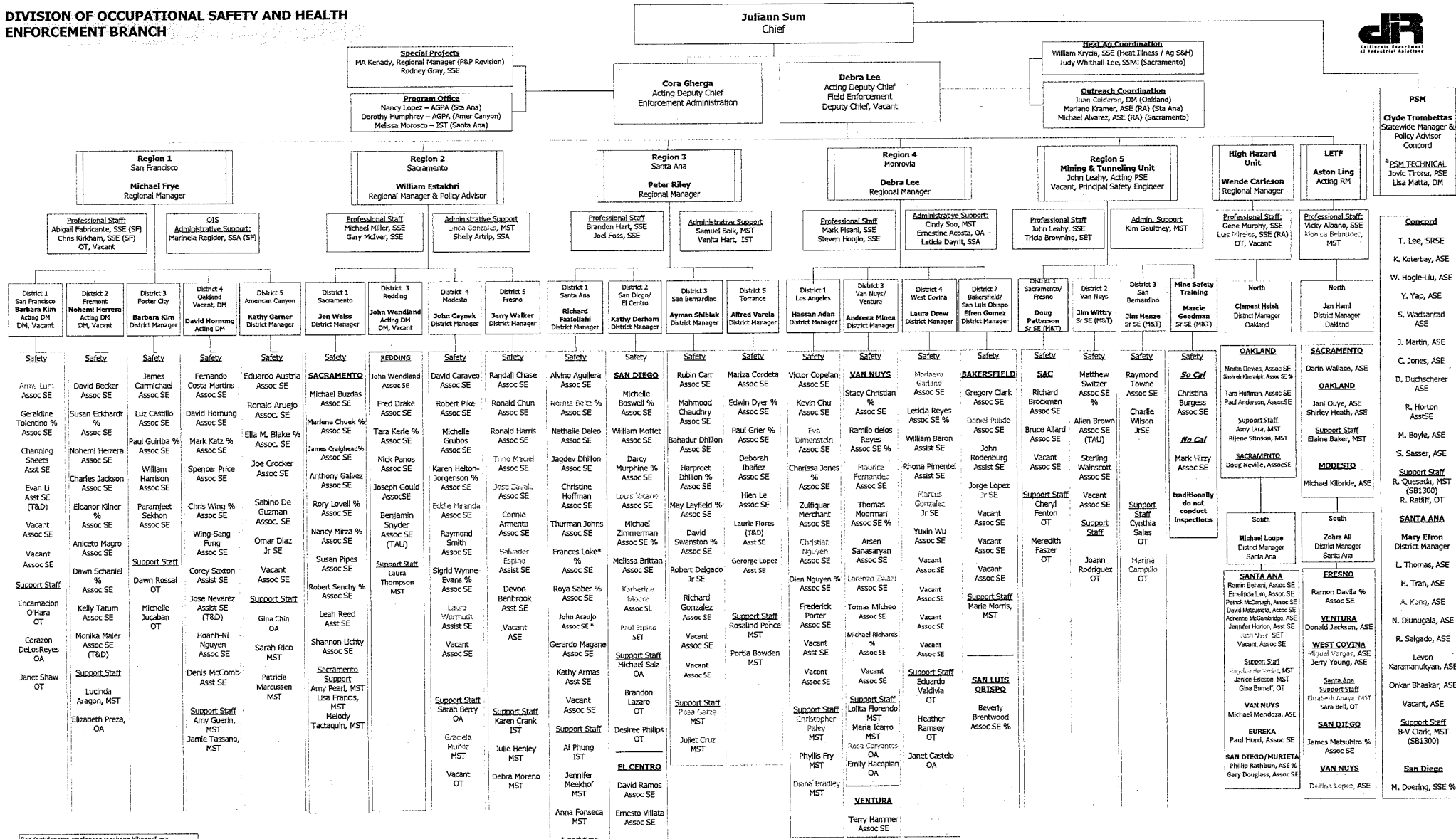


**Division of Occupational Safety and Health
Health, Safety, Medical and Training**



Red font denotes employees receiving bilingual pay
% = formerly IH

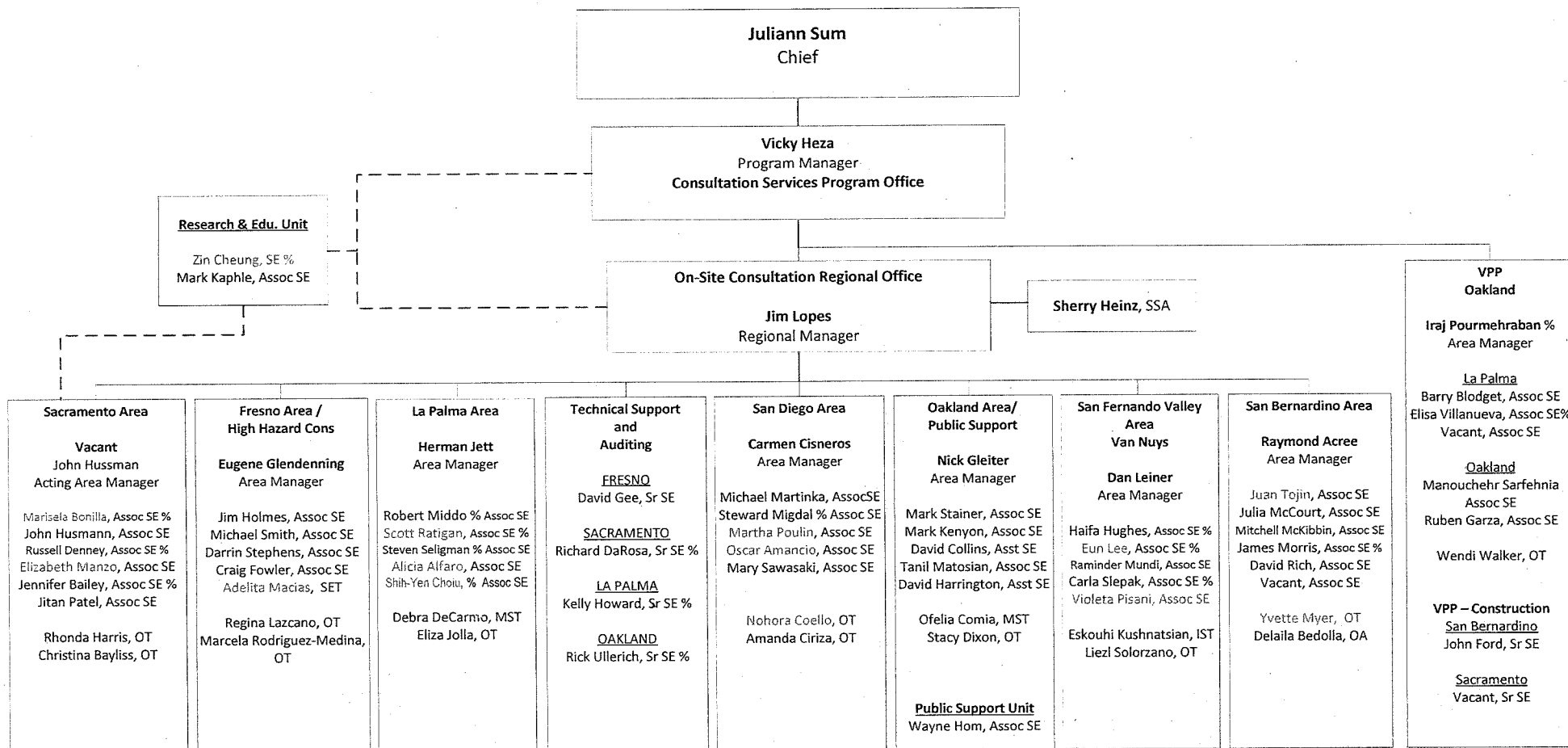
DIVISION OF OCCUPATIONAL SAFETY AND HEALTH ENFORCEMENT BRANCH



Red font denotes employees receiving bilingual pay
% = previously in

PSE – Principal Safety Engineer; RM – Regional Manager; DM – District Manager; SSI – Senior Safety Engineer; Assoc/Asst – Associate Safety Engineer; Asst/SA – Assistant Safety Engineer; SET – Safety Engineer Technician; JSE – Junior Safety Engineer
SEM – Staff Services Manager; AGPA – Associate Governmental Program Analyst; SSA – Staff Services Analyst; MST – Management Services Tech; OT – Office Tech; OA – Office Assistant; RA – Retired Annuitant; T&D – Training and Development; TAD – Temporary Authorization Appointment
* part time

**Division of Occupational Safety and Health
 Consultation Services Branch**

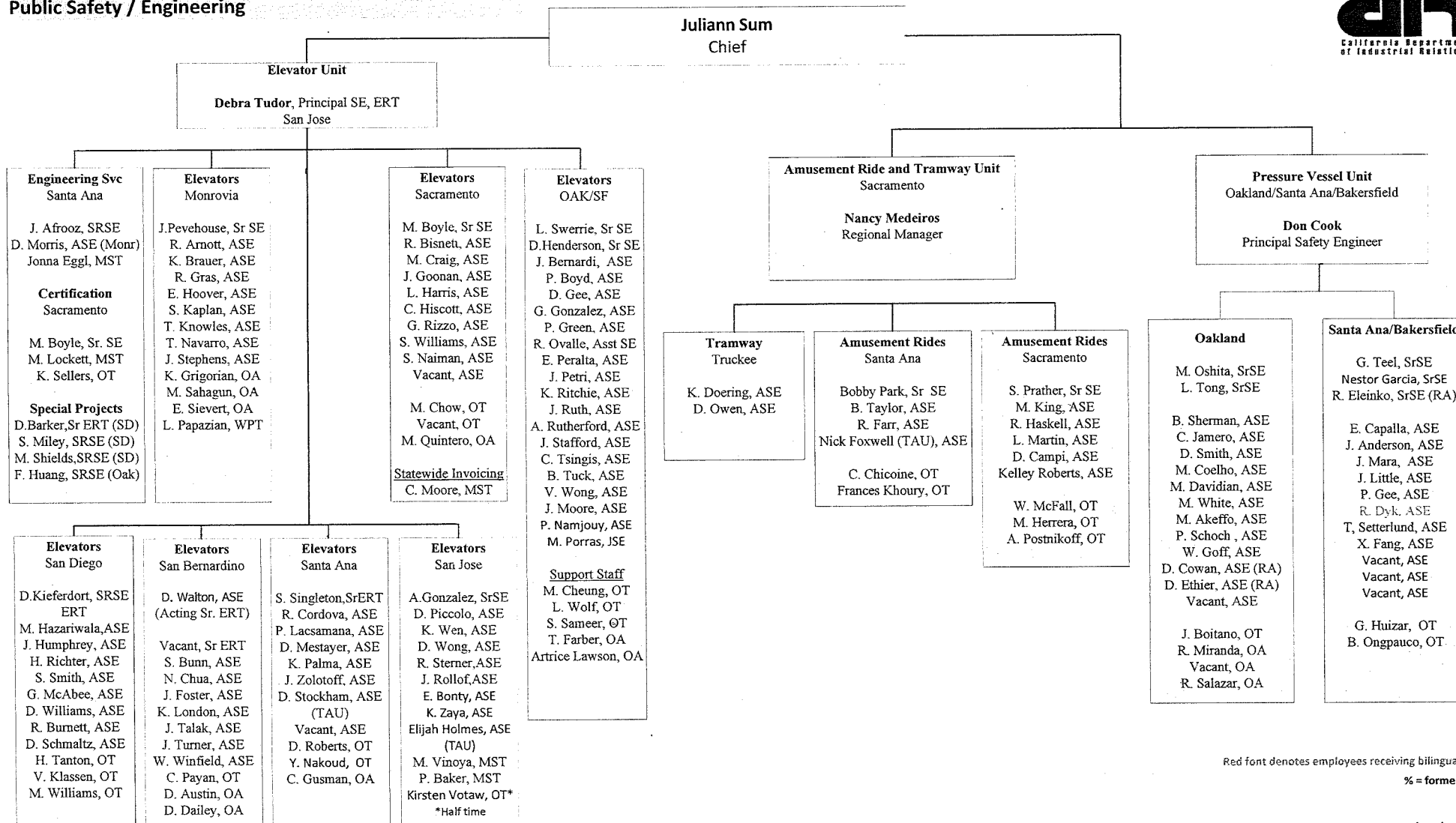


Red font denotes employees receiving bilingual pay

% = formerly IH

Revised 5/18/2015

**Division of Occupational Safety and Health
Public Safety / Engineering**



Red font denotes employees receiving bilingual pay
% = formerly IH

Revised 5/18/2015