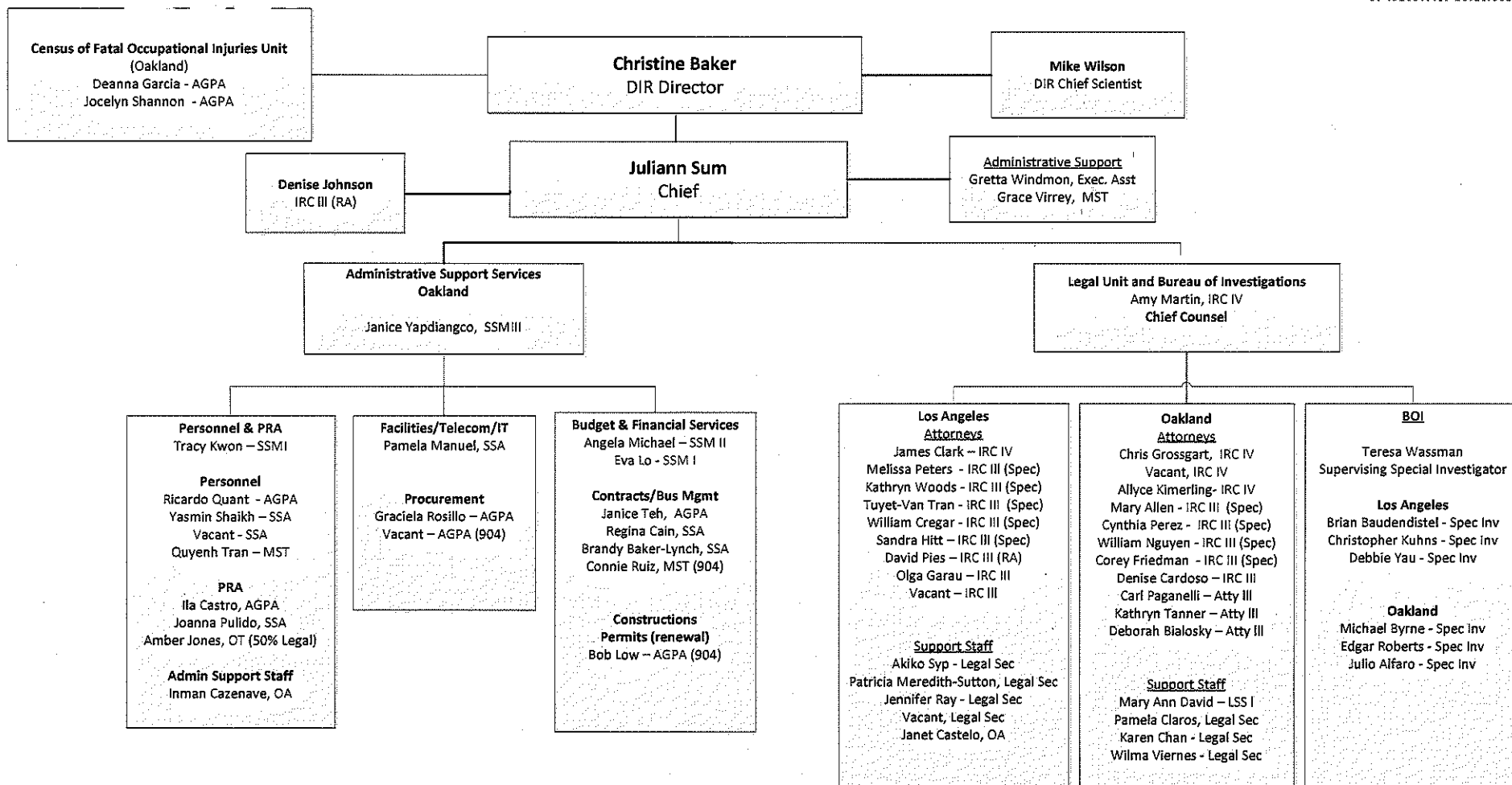
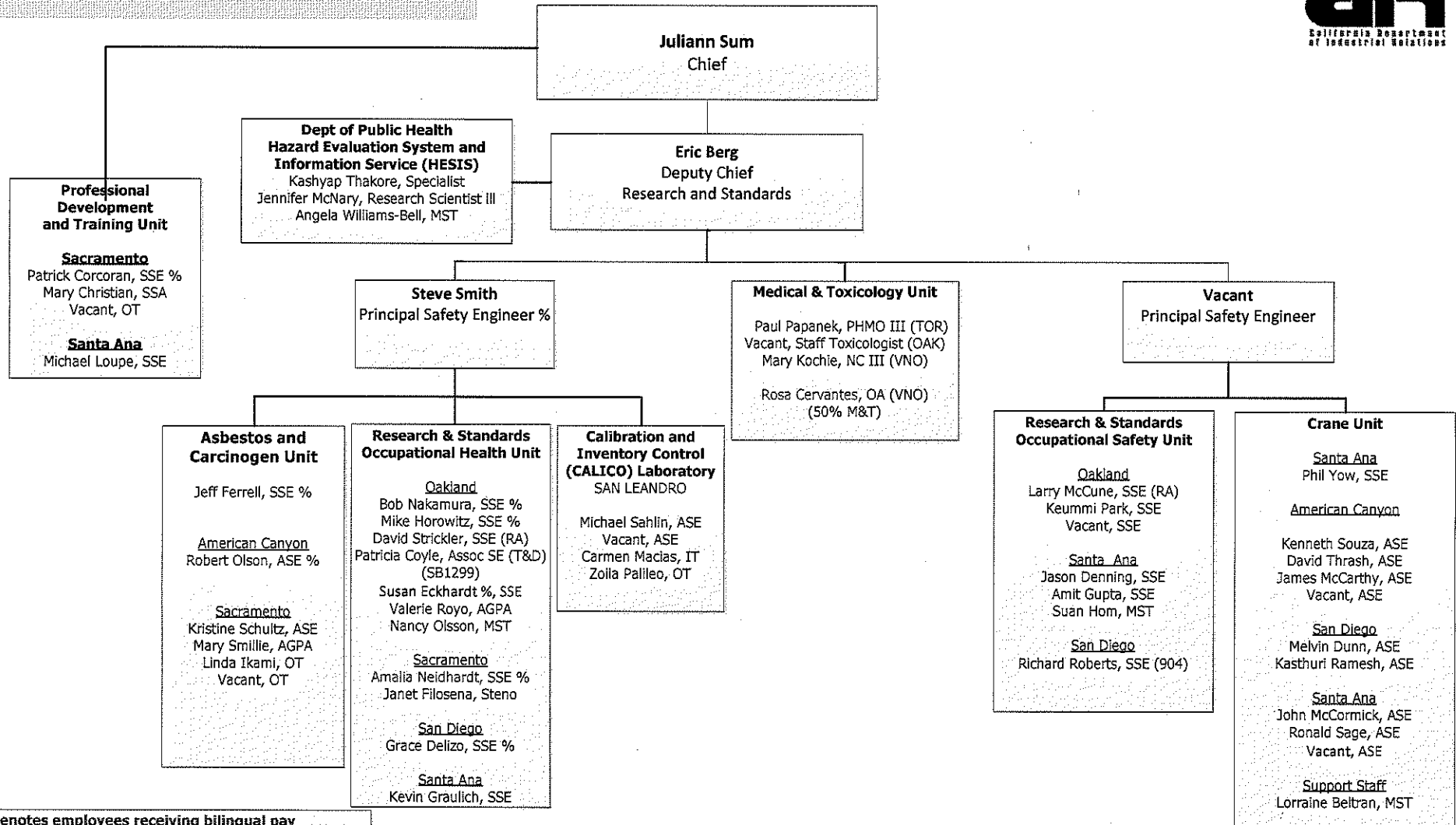


**DIVISION OF OCCUPATIONAL SAFETY AND HEALTH
ADMINISTRATION/LEGAL-BOI**



**Division of Occupational Safety and Health
Health, Safety, Medical and Training**

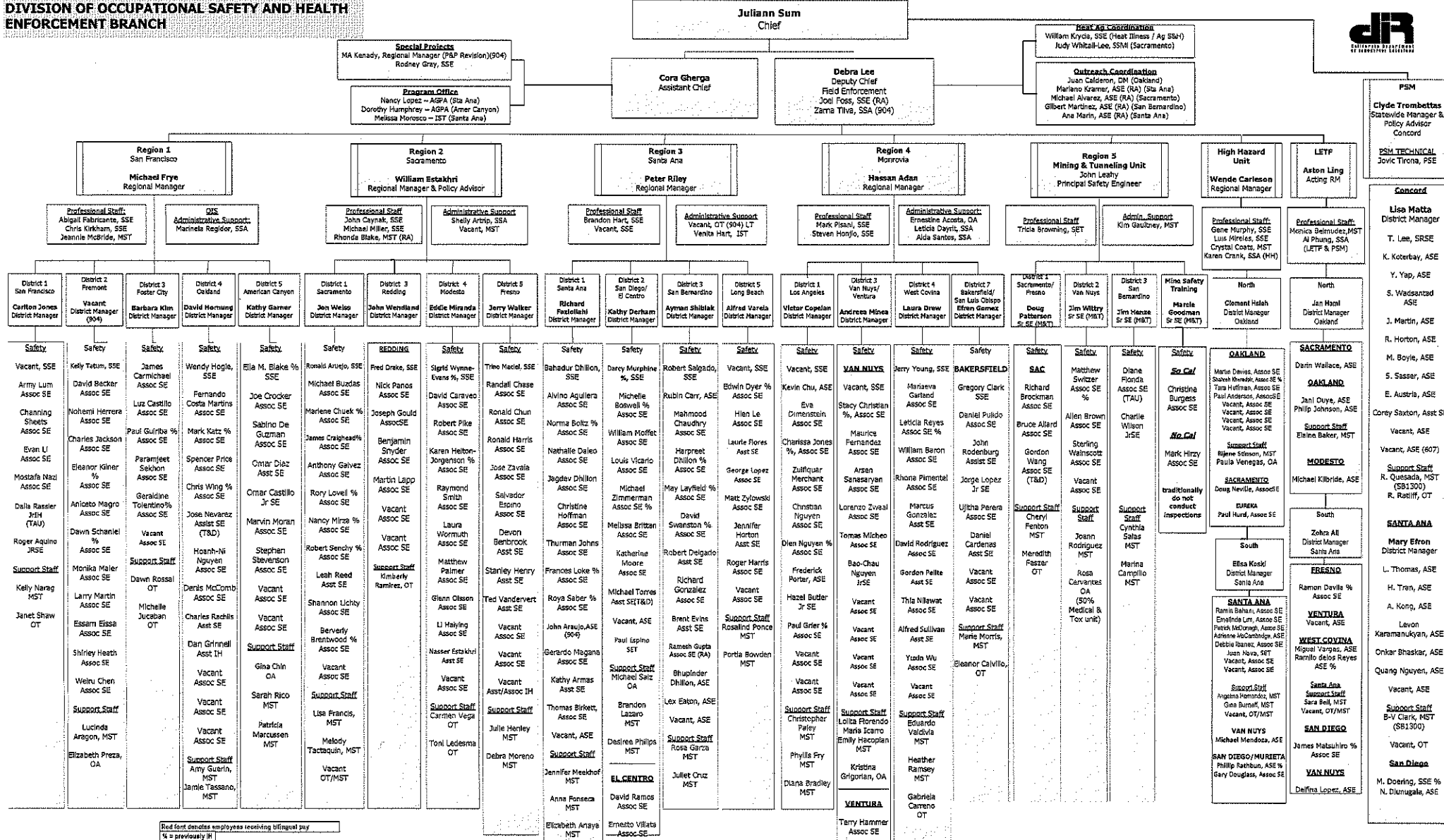


Red font denotes employees receiving bilingual pay

% = formerly IH

Revised 5/6/2016

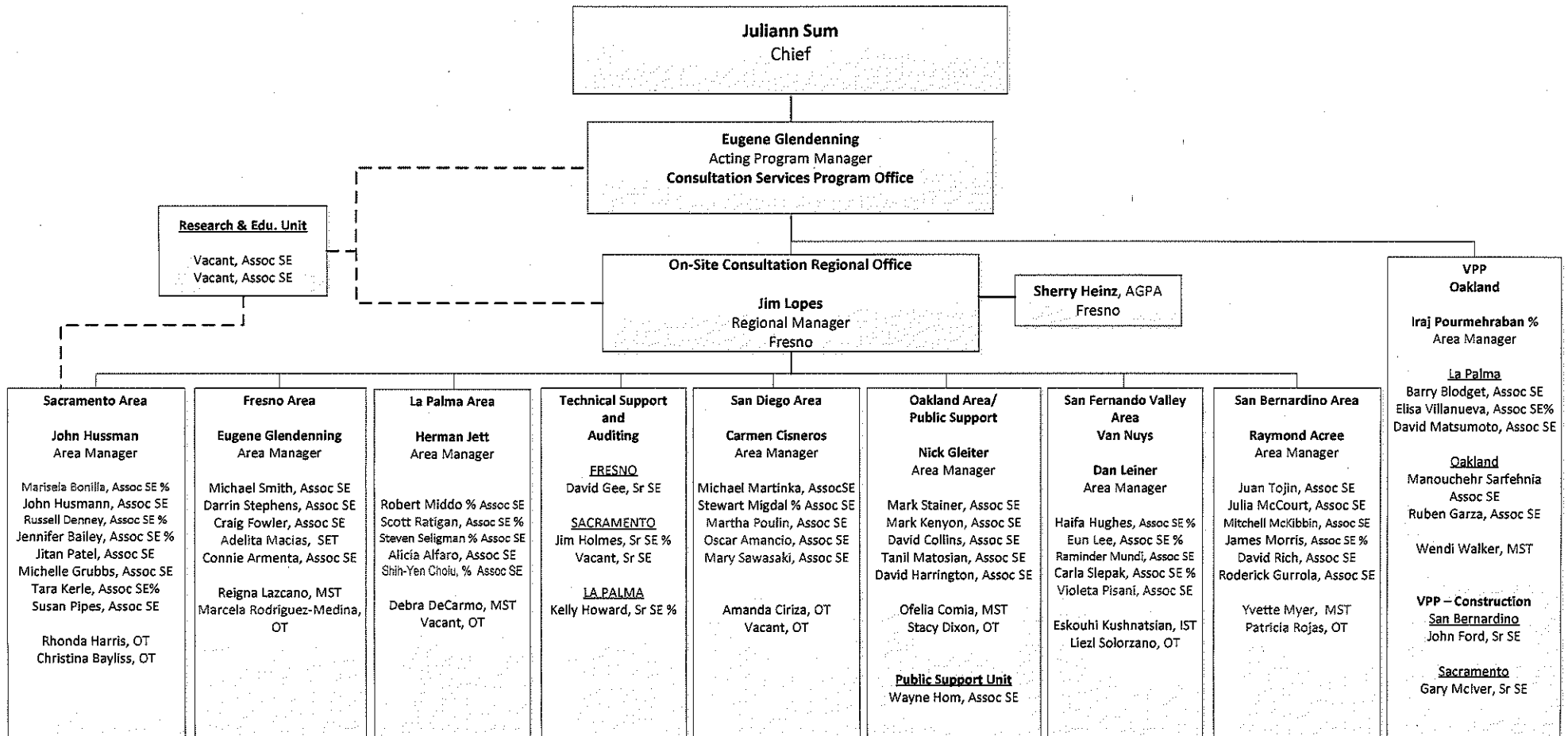
**DIVISION OF OCCUPATIONAL SAFETY AND HEALTH
ENFORCEMENT BRANCH**



Red font denotes employees receiving differential pay
% = previously in

PSA - Principal Safety Engineer RM - Regional Manager DM - District Manager SSE - Senior Safety Engineer SSE/ASE - Associate Safety Engineer SSE - Associate Safety Engineer SET - Safety Engineer/Technician JSE - Junior Safety Engineer
SSM - Staff Services Manager AGPA - Associate Government Program Analyst SSA - Staff Services Analyst SST - State Management Services Tech IST - Information System Tech OT - Office Tech OA - Office Assistant SA - Recruit Assistant T&D - Training and Development TAU - Temporary Authorization Appointment

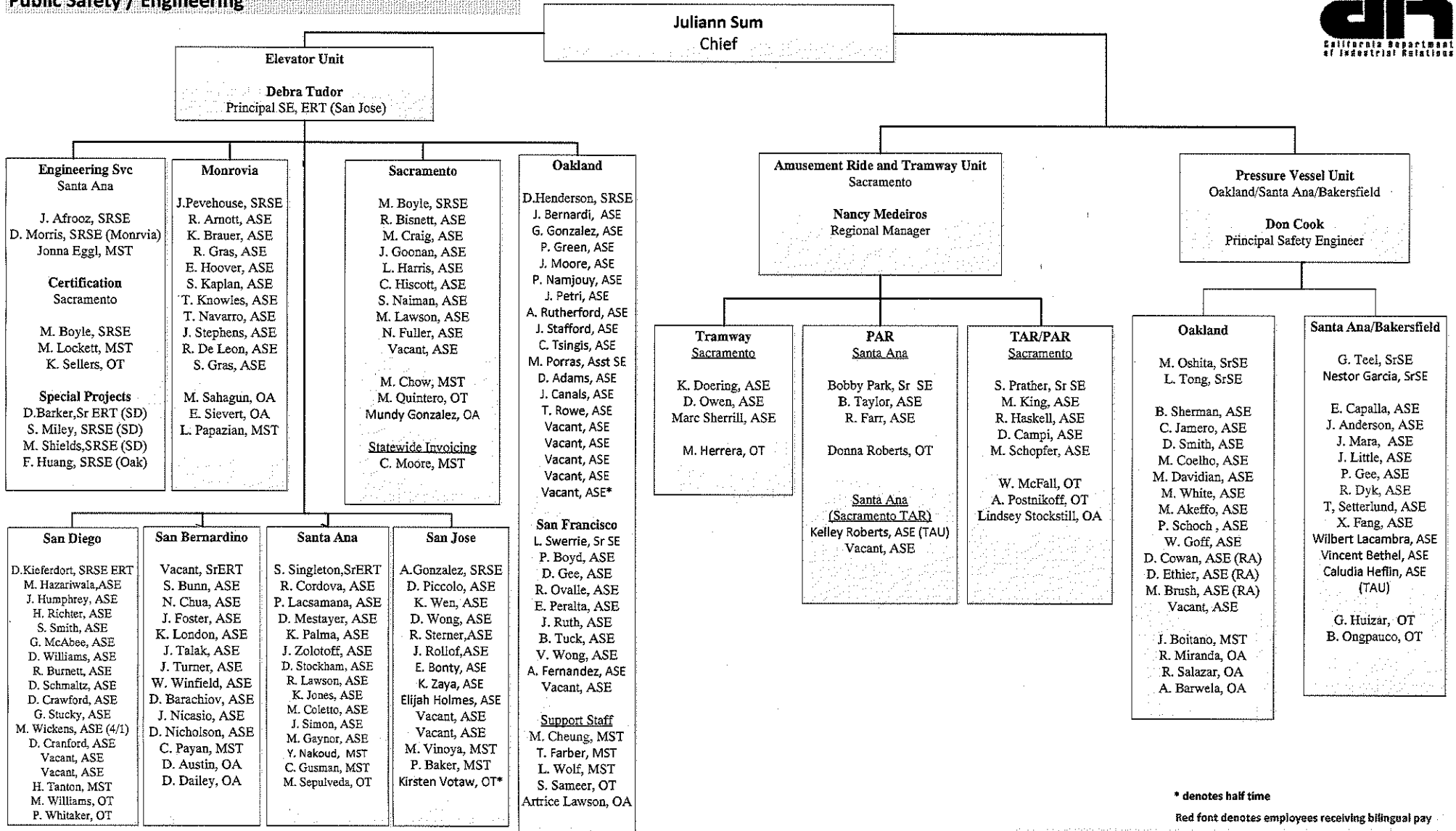
**Division of Occupational Safety and Health
Consultation Services Branch**



Red font denotes employees receiving bilingual pay
% = formerly IH

Revised 5/6/2016

**Division of Occupational Safety and Health
Public Safety / Engineering**



* denotes half time
Red font denotes employees receiving bilingual pay