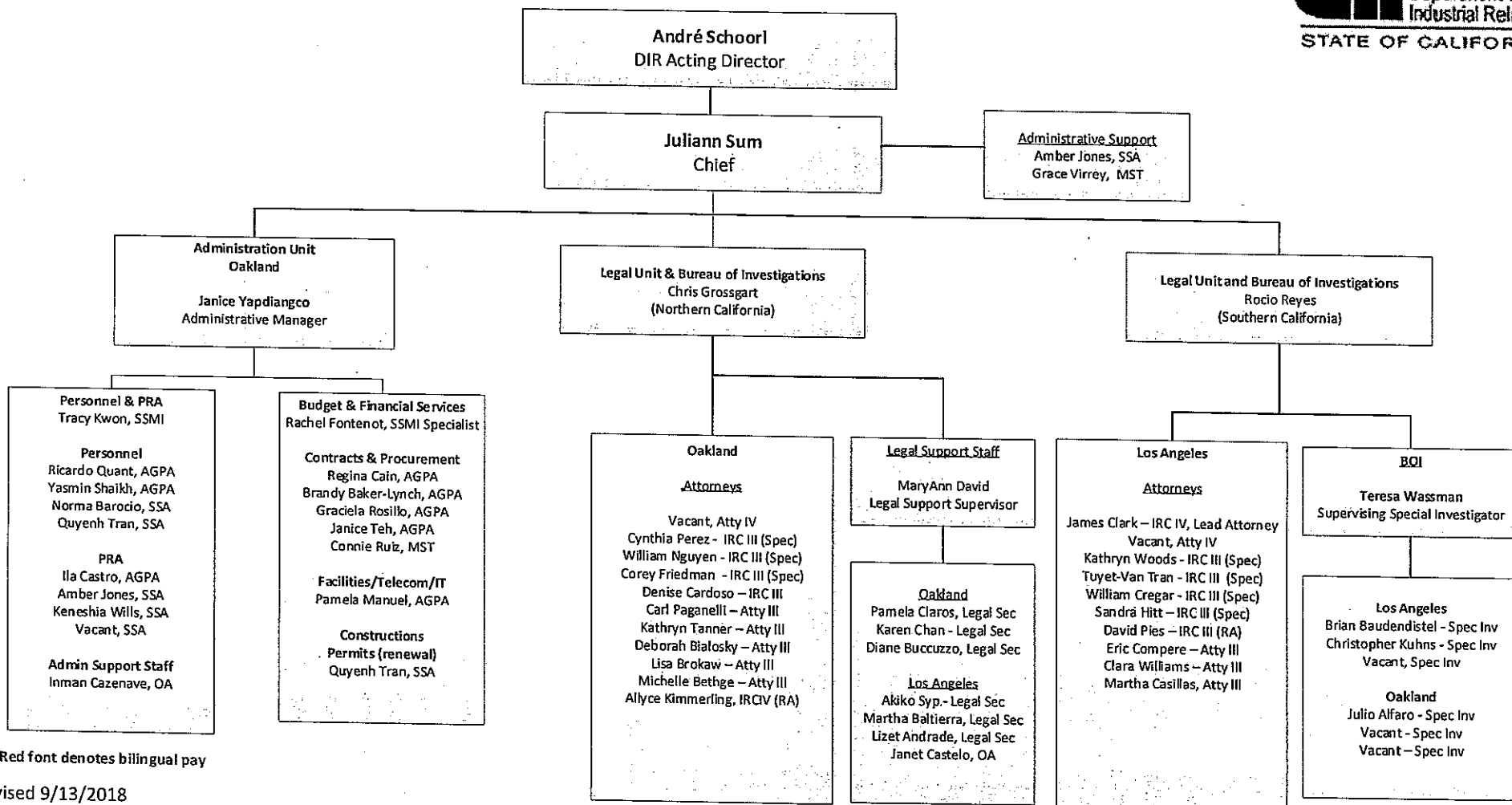


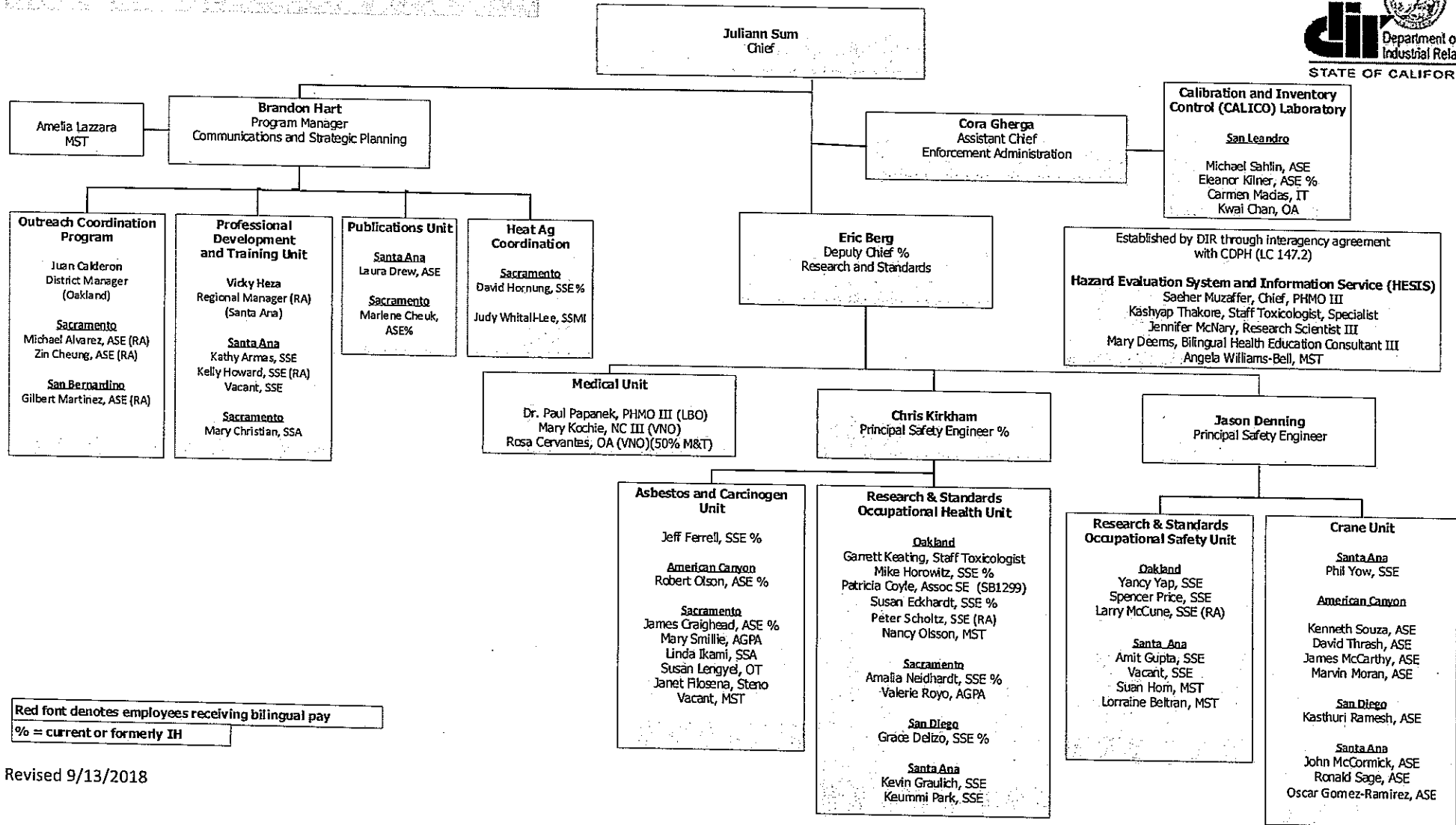
**DIVISION OF OCCUPATIONAL SAFETY AND HEALTH
ADMINISTRATION/LEGAL-BOI**



Red font denotes bilingual pay

Revised 9/13/2018

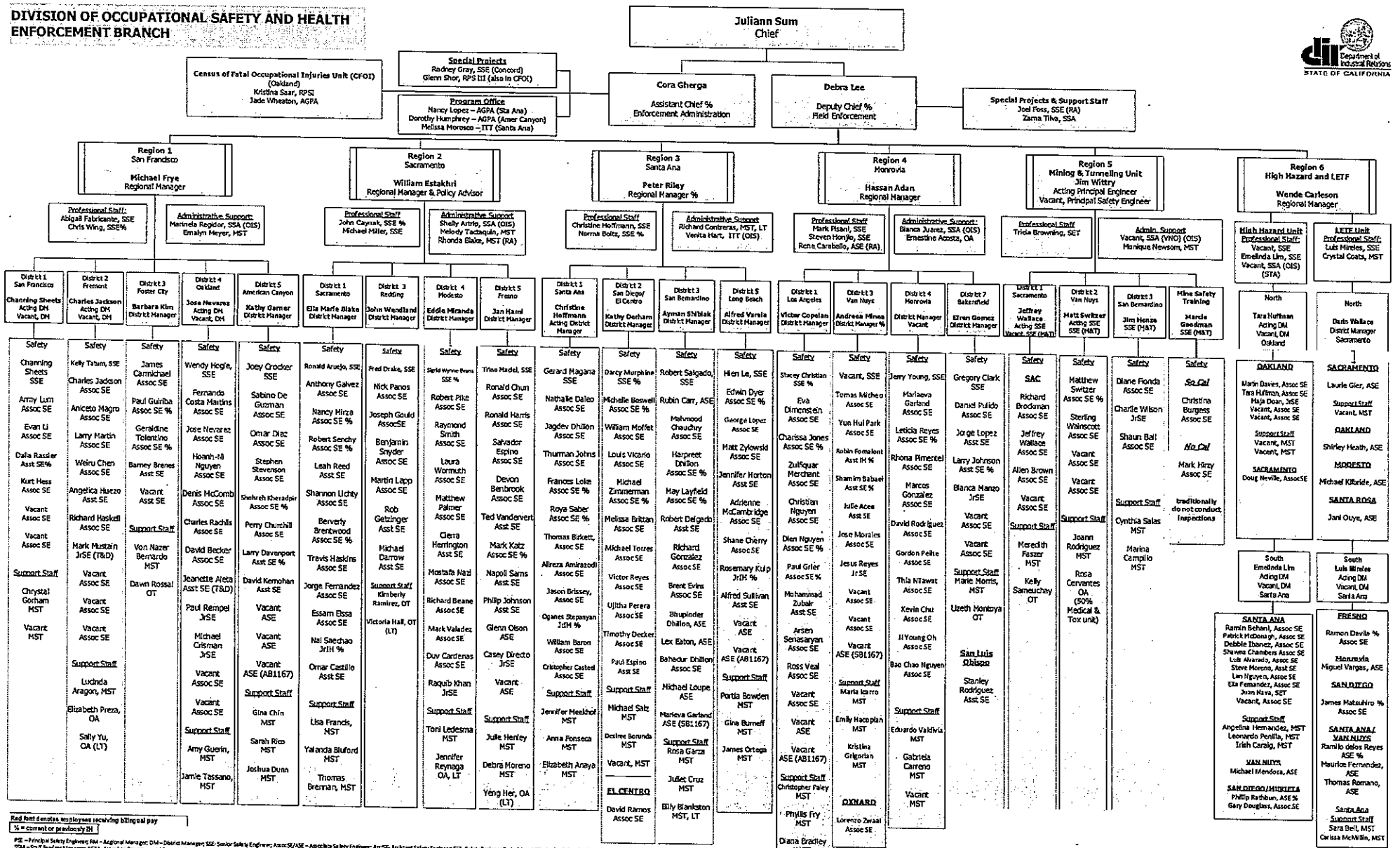
**Division of Occupational Safety and Health
Health, Safety, Medical, and Communications**



Red font denotes employees receiving bilingual pay
% = current or formerly IH

Revised 9/13/2018

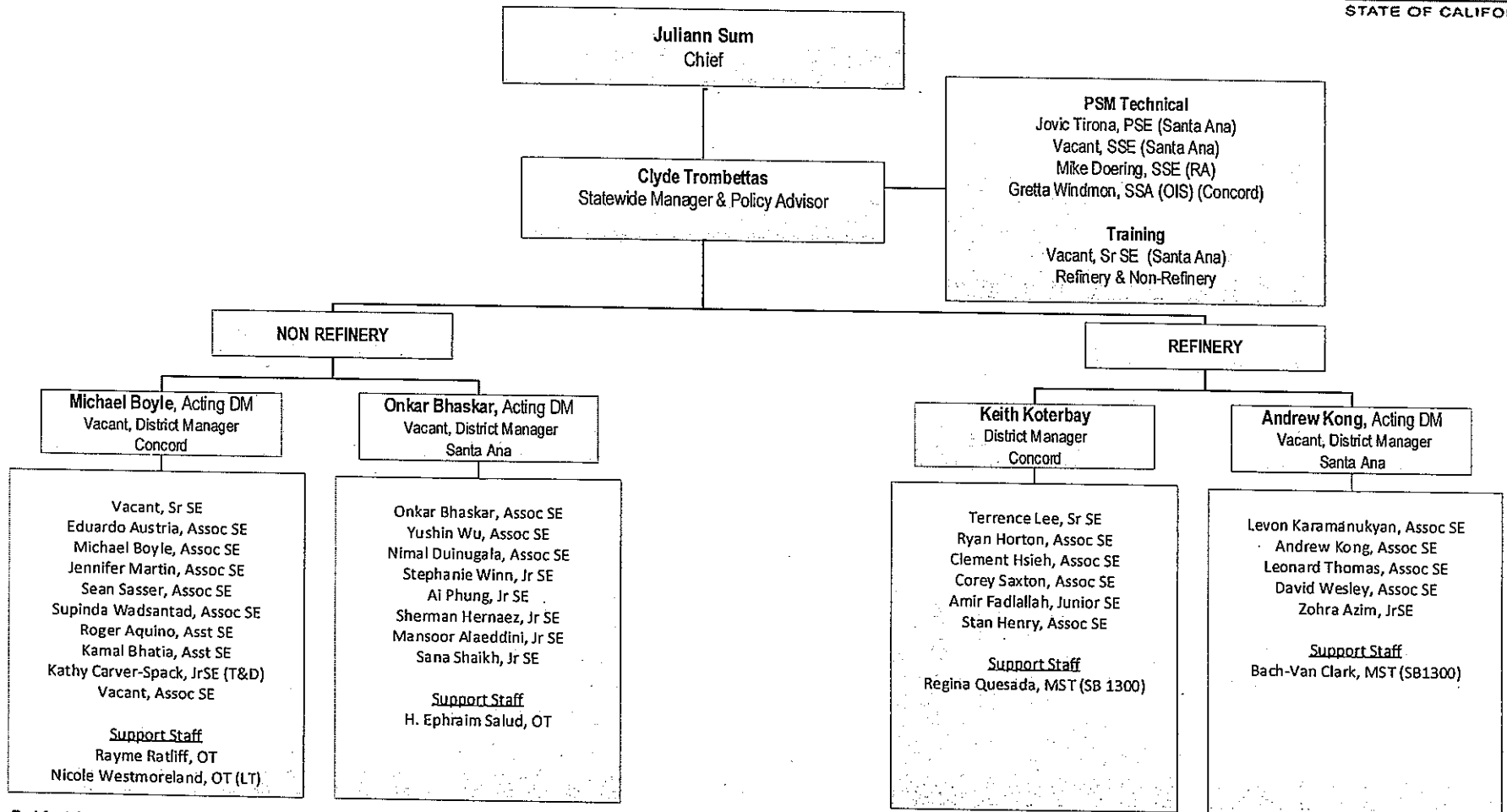
**DIVISION OF OCCUPATIONAL SAFETY AND HEALTH
ENFORCEMENT BRANCH**



Red text denotes employees receiving bilingual pay
% = current or previously III

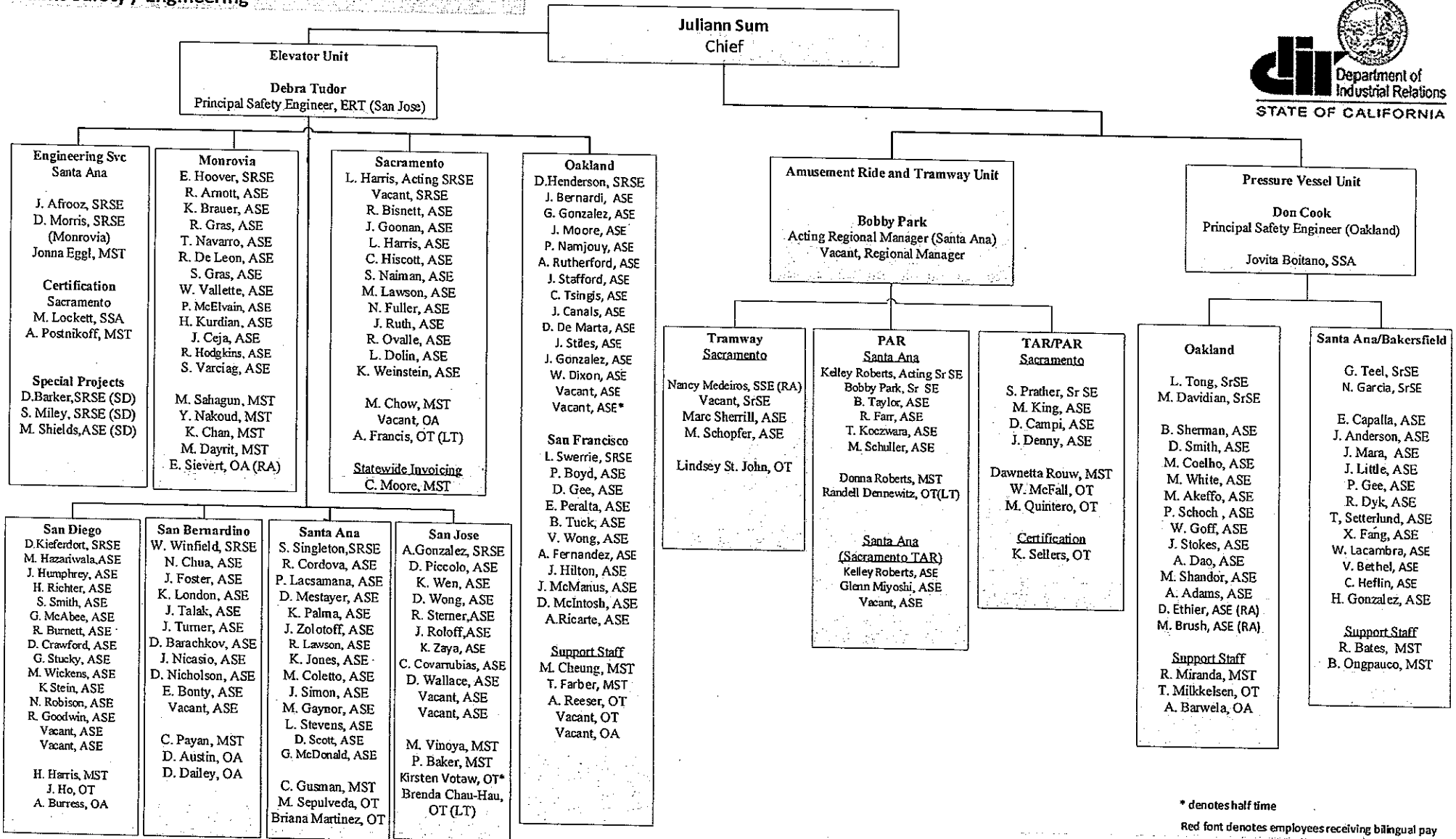
PSE - Principal Safety Engineer; RM - Regional Manager; DM - District Manager; SSE - Senior Safety Engineer; Assoc SSE - Associate Safety Engineer; ASE - Assistant Safety Engineer; ASSE - Junior Safety Engineer; SSM - Senior Safety Manager; AGPA - Associate Government Program Analyst; SSA - State Safety Analyst; MST - Management Services Technician; ST - Information System Technician; OT - Office Hours; OA - Office Assistant; RA - Regional Assistant; T&D - Training and Development; TAU - Temporary Authorization Agreement

**DIVISION OF OCCUPATIONAL SAFETY AND HEALTH
ENFORCEMENT BRANCH - PROCESS SAFETY MANAGEMENT (PSM) UNIT**



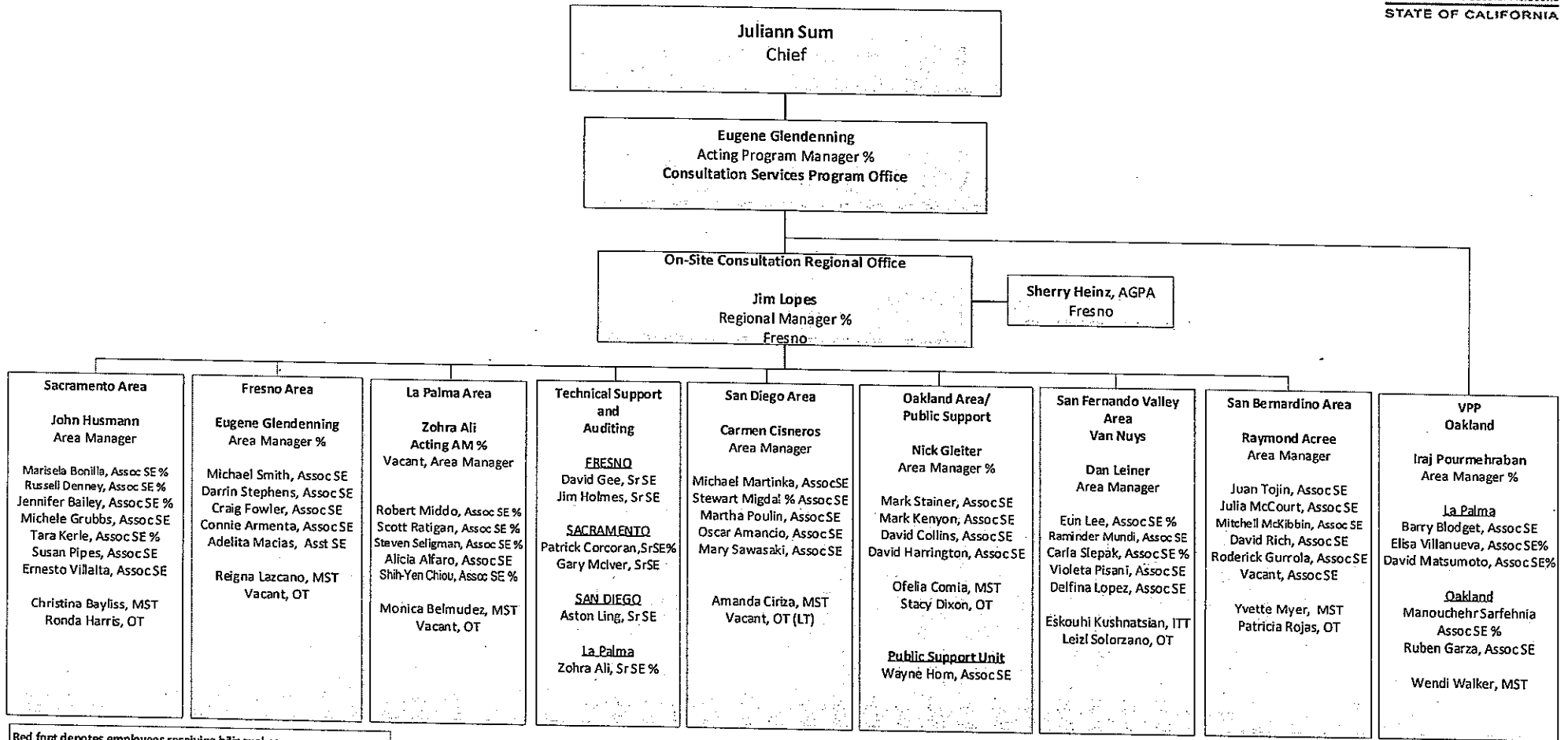
Red font denotes employees receiving bilingual pay

**Division of Occupational Safety and Health
Public Safety / Engineering**



* denotes half time
Red font denotes employees receiving bilingual pay
Revised 9/13/2018

**Division of Occupational Safety and Health
Consultation Services Branch**



Red font denotes employees receiving bilingual pay
% = current or formerly IH

Revised 9/13/2018